



honeymoon  
TABLE RUNNER

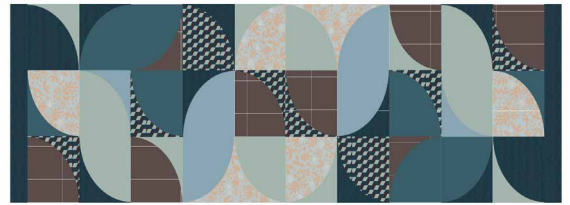


TABLE RUNNER DESIGNED BY *AGFstudio*

  
duval

FABRICS DESIGNED BY SUZY QUILTS



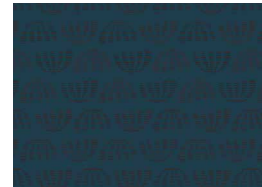
Fabric A  
DUV60205  
BOHO BIRDS GLACIER



Fabric B  
DUV60204  
BLOCKS NOVA



Fabric C  
PES918  
DRIFTWOOD



Fabric D  
DUV60202  
BOHO LEAVES NOVA



Fabric E  
PES913  
GLACIER



Fabric F  
PES912  
CERULEAN



Fabric G  
PES911  
HONEYMOON



# honeymoon

TABLE RUNNER

FINISHED SIZE | 64" x 18"

## FABRIC REQUIREMENTS

Fabric <b>A</b>	DUV60205	¼ yd.
Fabric <b>B</b>	DUV60204	1¼ yd.
Fabric <b>C</b>	PES918	¼ yd.
Fabric <b>D</b>	DUV60202	7⁄8 yd.
Fabric <b>E</b>	PES913	½ yd.
Fabric <b>F</b>	PES912	¼ yd.
Fabric <b>G</b>	PES911	¼ yd.

### BACKING FABRIC

Fabric **B** DUV60204 (Included)

### BINDING FABRIC

Fabric **D** DUV60202 (Included)

## CUTTING DIRECTIONS

¼" seam allowances are included.  
WOF means width of the fabric.

- Four (4) template 1 from fabric **A**.
- Four (4) template 2 from fabric **A**.
- Two (2) 18½" x 33" rectangle from fabric **B**. (**Backing**).
- Six (6) template 1 from fabric **B**.
- Two (2) template 2 from fabric **B**.
- Two (2) template 1 from fabric **C**.
- Six (6) template 2 from fabric **C**.

- Five (5) 1½" x WOF rectangle from fabric **D**. (**Binding**)
- Two (2) 18½" x 2½" rectangle from fabric **D**.
- Eight (8) template 1 from fabric **D**.
- Two (2) template 2 from fabric **D**.
- Six (6) template 1 from fabric **E**.
- Six (6) template 2 from fabric **E**.
- Two (2) template 1 from fabric **F**.
- Four (4) template 2 from fabric **F**.
- Two (2) template 1 from fabric **G**.
- Six (6) template 2 from fabric **G**.

## CONSTRUCTION

- Join template 1 and 2 with the following fabric combinations:

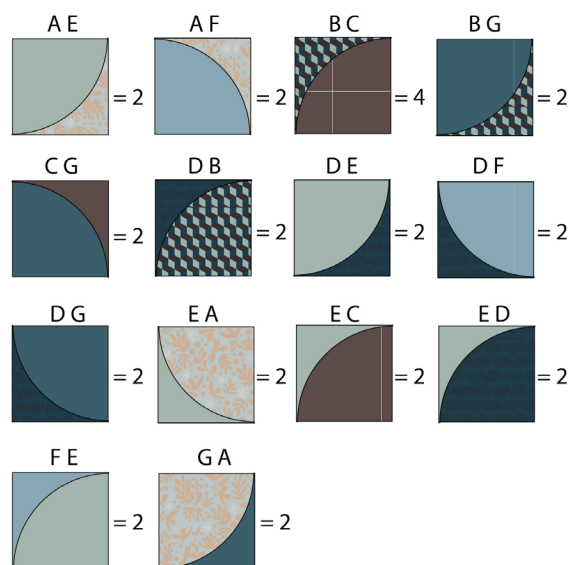


DIAGRAM 1





- Now, take two (2) 18½" x 33" rectangles from fabric **B** and join them. That piece will be your backing.

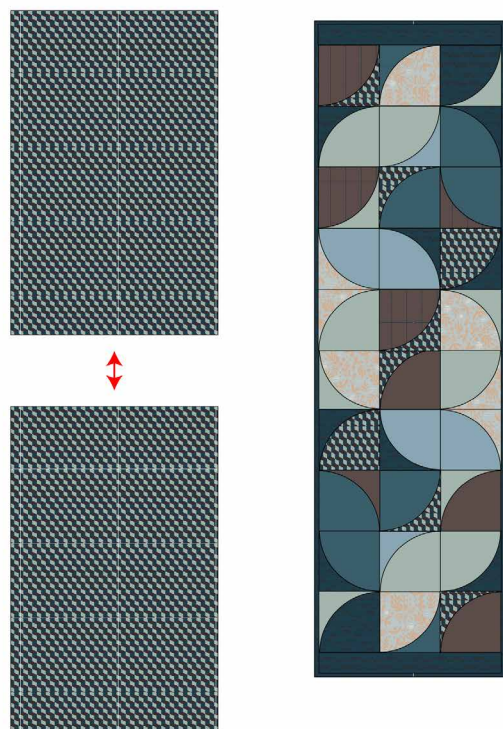


DIAGRAM 6

## QUILT ASSEMBLY

*Sew rights sides together.*

- Place BACKING FABRIC on a large surface wrong side up. Stretch it with masking tape against that surface.
- Place BATTING on top of backing fabric.
- Place TOP on top of the batting with right side facing up. Smooth away wrinkles using your hands.
- Pin all layers together and baste with basting thread, using long stitches. You can also use safety pins to join the layers.
- Machine or hand quilt starting at the center and working towards the corners. Remember that quilting motifs are a matter of personal preference. Have fun choosing yours!
- After you finished, trim excess of any fabric or batting, squaring the table Runner to proceed to bind it.

## BINDING

*Sew rights sides together.*

- Take the (5) 1½" x WOF stripes that you cut from fabric **D** to make a final strip 174" long. Start sewing the binding strip in the middle of one of the sides of the table runner, placing the strip right side down and leaving an approximated 5" tail. Sew with ¼" seam allowance (using straight stitch), aligning the strip's raw edge with the quilt top's raw edge.
- Stop stitching ¼" before the edge of the quilt (DIAGRAM B 1). Clip the threads. Remove the quilt from under the machine presser foot. Fold the strip in a motion of 45° and upward, pressing with your fingers (DIAGRAM B2). Hold this fold with your finger, bring the strip down in line with the next edge, making a horizontal fold that aligns with the top edge of the quilt (DIAGRAM B3). Start sewing at ¼" of the border, stitching all the layers. Do the same in the four corners of the quilt.
- Stop stitching before you reach the last 5 or 6 inches. Cut the threads and remove the quilt from under the machine presser foot. Lay the loose ends of the binding flat along the quilt edge, folding the ends back on themselves where they meet. Press them together to form a crease. Using this crease as the stitching line, sew the two open ends of the binding with right sides together (you can help yourself marking with a pencil if the crease is difficult to see).
- Trim seam to ¼" and press open. Complete the sewing. Turn binding to back of the quilt, turn raw edge inside and stitch by hand using blind stitch.

