

# ROAD TO ROUND TOP *Collection*

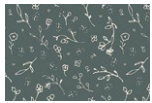
## PROJECT SHEET



Some of the projects featured in our lookbooks link back to patterns that were originally created in the past with different fabric selections. This project sheet will serve you as a quick reference to find and replace with the specific fabrics we used for this project. Happy sewing!

# Road to Round Top

FABRICS DESIGNED BY ELIZABETH CHAPPELL



**FABRIC A**  
RRT14603  
DELICATE BLOSSOMS



**FABRIC I**  
PE432  
SANDSTONE



**FABRIC B**  
RRT14601  
HIDDEN GEMS



**FABRIC J**  
PE446  
HONEYDEW



**FABRIC C**  
RRT14609  
MODERN VINTAGE



**FABRIC K**  
PE525  
ENGLISH TOFFEE



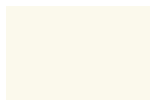
**FABRIC D**  
RRT14611  
SIMPLY STATED



**FABRIC L**  
PE505  
BLUSHING



**FABRIC E**  
RRT14610  
ROADSIDE FIELDS



**BACKGROUND**  
PE433  
SNOW



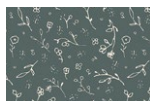
**FABRIC F**  
RRT14604  
MAKE A WISH



**BACKING**  
F14600  
FRESHLY GATHERED



**FABRIC G**  
PE440  
MACCHIATO



**BINDING**  
RRT14603  
DELICATE BLOSSOMS



**FABRIC H**  
PE506  
SUGAR PLUM

### PROJECT INFO



PROJECT NAME: SKY STAR QUILT

DESIGNED BY: PLAINS AND PINE

FINISHED SIZE: 85" x 85"

[CLICK HERE FOR PATTERN](#)

PATTERN AVAILABLE FOR PURCHASE

FABRIC REQUIREMENTS

PLEASE CONSULT PATTERN FOR YARDAGE REQUIREMENTS.