

X
X
X
X
X
X
X
X
X
X
X
X

A green tote bag with a white daisy pattern and white handles is shown. The bag is surrounded by fresh produce, including lemons, oranges, and a green apple, along with small white daisies on a light gray background.

x x x x x x x x x x x x x x x x x x x

THE canvas *Tote*

DESIGNED BY AGFstudio

flower
bloom

FABRICS DESIGNED BY AGF STUDIO



C90706a
CHOOSE HAPPY OLIVE



THE canvas Tote

FINISHED SIZE | 15" x 15½"

FABRIC REQUIREMENTS

Fabric **A** C90706a ⅝ yd.

ADDITIONAL MATERIAL

Webbing 2Yds (Suggested)

CUTTING DIRECTIONS

¼" seam allowances are included.
WOF means width of fabric.

- One (1) 33¾" x 16½" rectangle from fabric **A**.
- Two (2) 32" x 1¾" strips from fabric **A**. (Optional)

CONSTRUCTION

Sew all rights sides together with ¼" seam allowance.

- Start by cleaning all the edges of the 33¾" x 16½" rectangle with a zig zag stitch.
- Now fold the piece in half and sew both sides. See diagram below for reference.

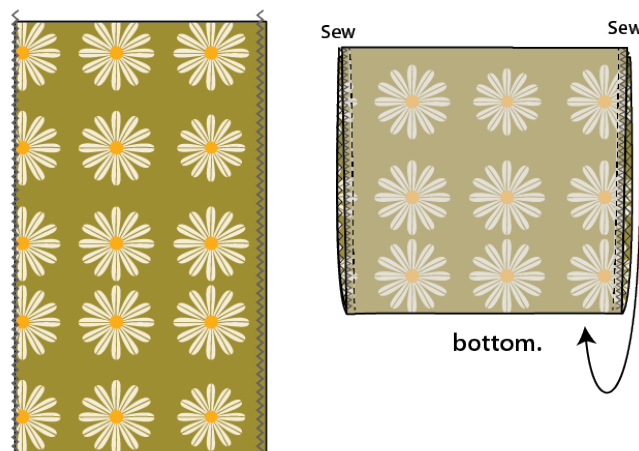


DIAGRAM 1

- Fold the top edges 1" down and press, then fold 1" down one more time and press again. Top stitch the top of the tote.

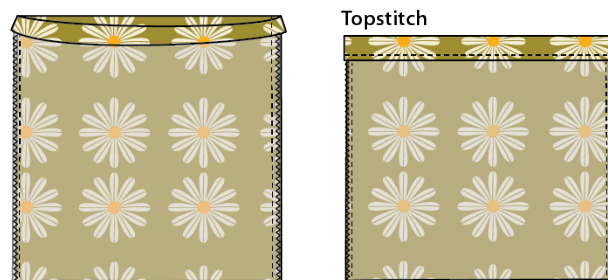


DIAGRAM 2

- Measure 1½" up on both bottom corners and pin to make it easier.
- Sew across the corners, and cut the excess fabric. This step will give the bag some volume at the bottom.

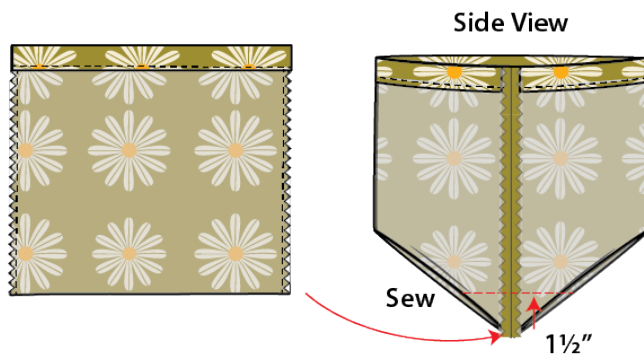


DIAGRAM 3

Webbing Strap

- Measure about 3" from the side seams and make a mark.
- Take the end of one of the straps and using the mark as guide sew it at $\frac{1}{4}$ " seam allowance from the top of the bag.
- Now, measure about $1\frac{3}{4}$ " down from the seam and sew again the strap to the tote to secure the strap. Repeat this step on the other side of the tote.

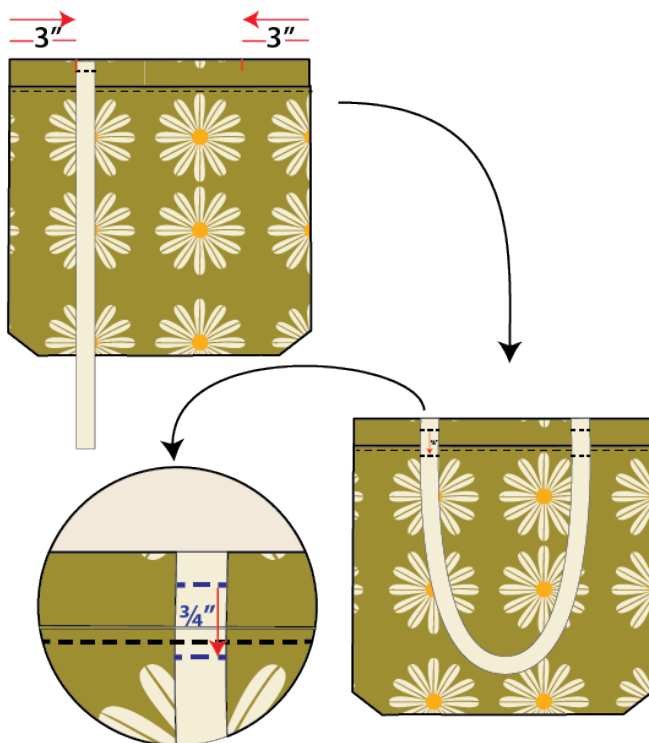


DIAGRAM 4

- Fold the strap back up and using similar color thread as the webbing, make a top stitch in a square shape. See diagram below for reference.



DIAGRAM 5

- In case you prefer making the straps out of the same fabric follow the instructions below.

Fabric Strap: (Optional)

- Take both 32" x 1¾" strips and gate fold them as shown on diagram below.
- Press, fold 1" again, press and top stitch.



DIAGRAM 6

XXXXXXXXXXXXXXXXXXXXXXXXXXXXXXXXXXXX

*Congratulations
& enjoy*

XXXXXXXXXXXXXXXXXXXXXXXXXXXXXXXXXXXX



artgalleryfabrics.com

NOTE: While all possible care has been taken to ensure the accuracy of this pattern, We are not responsible for printing errors or the way in which individual work varies.

Please read instructions carefully before starting the construction of this quilt. If desired, wash and iron your fabrics before starting to cut.

© 2023 Courtesy of Art Gallery Quilts LLC. All Rights Reserved.