

X
X
X
X
X
X
X
X
X
X
X
X

A quilted banner with a geometric pattern of black, white, and brown triangles and chevrons, hanging from a brass rod. In the foreground, there is a stack of books, a potted plant, a small succulent in a silver pot, an alarm clock, and a pair of black and silver bellows.

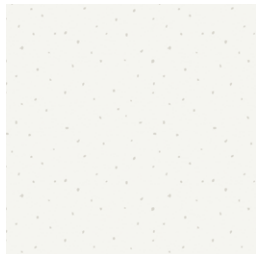
XXXXXXXXXXXXXXXXXXXXXXXXXXXX

TWAIN

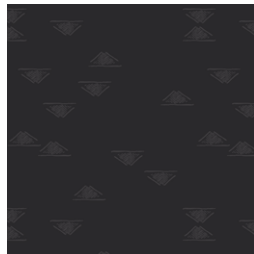
WALL ART

DESIGNED BY AGFstudio

DUALITY FUSION



Fabric A
FUS-DU-2500
SPECKTACULAR WHITE
by Pat Bravo

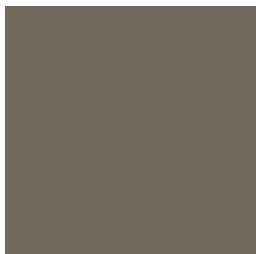


Fabric B
FUS-DU-2507
DOMESTIC CHARM BLACK
by Maureen Cracknell



Fabric C
FUS-DU-2510
WINDING COURSE WHITE
by Bonnie Christine

ADDITIONAL BLENDERS



Fabric D
PE-469
SMOOTH-PEBBLE



Fabric E
PE-481
MAGNETISM



FEEL THE DIFFERENCE © 2023 Courtesy of Art Gallery Quilts LLC. All Rights Reserved.

TWAIN

WALL ART

FINISHED SIZE | 15" x 22"

FABRIC REQUIREMENTS

Fabric A	FUS-DU-2500	¼ yd.
Fabric B	FUS-DU-2507	¼ yd.
Fabric C	FUS-DU-2510	⅛ yd.
Fabric D	PE-469	⅛ yd.
Fabric E	PE-481	⅛ yd.

BACKING FABRIC
FUS-DU-2511 FQ (*Suggested*)

CUTTING DIRECTIONS

¼" seam allowances are included.
WOF means width of fabric.

- One (1) 2¼" x WOF strip from fabrics **A, B, C, D & E**.
- Three (3) 15½" x 2" strips from fabrics **A & B**.
- One (1) 10" x 3" rectangle from fabric **B**.

CONSTRUCTION

Sew all rights sides together with ¼" seam allowance.

- Bring three (3) 15½" x 2" strips from fabrics **A & B**.
- Attach the strips together alternating their order as shown in the diagram below in the order **ABABAB**.
- Set aside.



DIAGRAM 1

- Bring two (2) 2¼" x WOF strips from fabrics **A, B, C, D & E**.
- Attach the strips together as shown in the diagram below in the order **ABCDE**.
- Make two (2) and set aside.



DIAGRAM 2

- Use your clear ruler to cut two (2) 4¼" strips at a 45° aligning the ruler to the top right corner as shown in the diagram below.

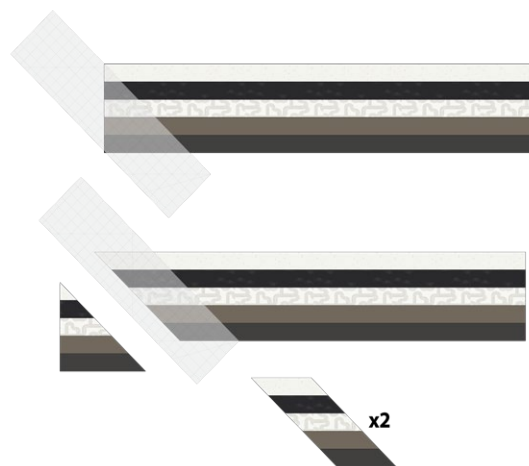


DIAGRAM 3

- Use your clear ruler to cut the other two (2) 4¼" strips at a 45° but this time aligning the ruler to the top left corner as shown in the diagram below.

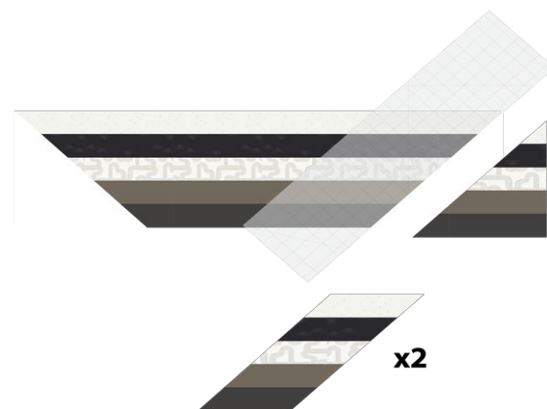


DIAGRAM 4

- Attach the previous made strips on a 45°, alternating their order to create a chevron pattern as shown in the diagram below.

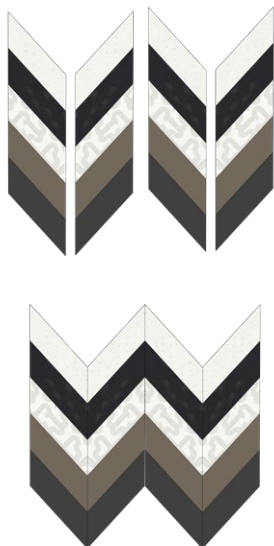


DIAGRAM 5

- Trim the top on a straight line.

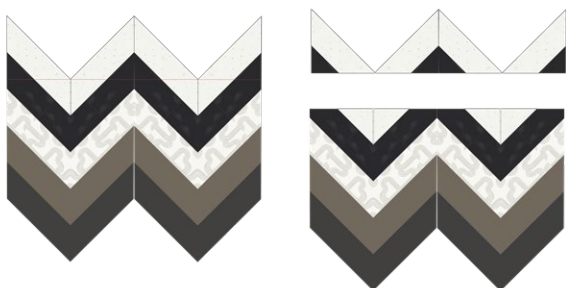


DIAGRAM 6

- Bring the strip set **ABABAB** from diagram #1 and attach it on top of the previous made piece as shown in the diagram below.
- Set aside.



DIAGRAM 7

- Take one (1) 10" x 3" rectangle from fabric **B** and your iron.
- Fold the rectangle in half and press, to create a guide line.
- Open it up and now bring one of the edges, towards the center to meet with the guide line created while pressing.



DIAGRAM 8

- Fold the other edge towards the center to meet with the guide line created while pressing.
- Press.
- Fold the strip in half on the guide line created while pressing and press, then sew $\frac{1}{8}$ " away from the edges as shown in the diagram below.

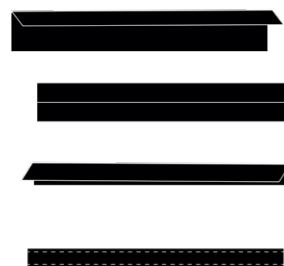


DIAGRAM 9

- Cut in half and set aside.



DIAGRAM 10

QUILT ASSEMBLY

Sew rights sides together.

- Use the top of the wall art to create a pattern to trace and cut the backing and binding piece for the wall art.
- Place the backing on top of the batting and sew $\frac{1}{8}$ " around the edge to hold them in place together.

- Bring the 5" x $\frac{3}{4}$ " strips from fabric **B** and fold both in half.

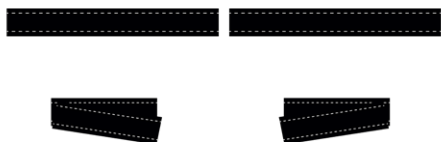


DIAGRAM 11

- Bring the top wall art piece and pin the fabric **B** strips on top, measuring $\frac{3}{4}$ " on each side.



DIAGRAM 12

- Place the backing on top, right sides of fabrics together and sew all the way around leaving a 3" opening to turn the wall art inside out.

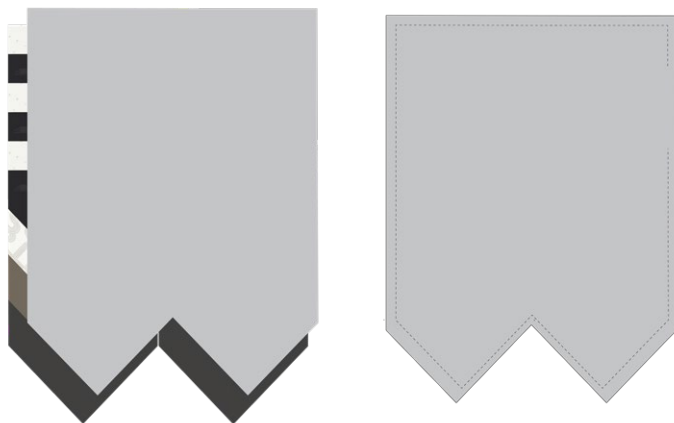


DIAGRAM 13

- Turn the wall art inside out and close the 3" opening.
- Top stitch and quilt as desired.



DIAGRAM 14

XXXXXXXXXXXXXXXXXXXXXXXXXXXX

*Congratulations
& enjoy*

XXXXXXXXXXXXXXXXXXXXXXXXXXXX



artgalleryfabrics.com

NOTE: While all possible care has been taken to ensure the accuracy of this pattern, We are not responsible for printing errors or the way in which individual work varies. Please read instructions carefully before starting the construction of this quilt. If desired, wash and iron your fabrics before starting to cut.