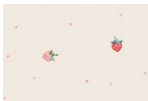


Some of the projects featured in our lookbooks link back to patterns that were originally created in the past with different fabric selections. This project sheet will serve you as a quick reference to find and replace with the specific fabrics we used for this project. Happy sewing!

# Haven

FABRICS DESIGNED BY AMY SINIBALDI

FABRIC REQUIREMENTS



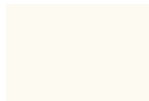
**FABRIC A**  
HAV16401  
BERRY DRIZZLE



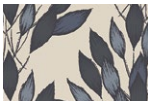
**FABRIC G**  
HAV26408  
LIVELY ISABEL



**FABRIC B**  
HAV26402  
PROMENADE  
ENCORE



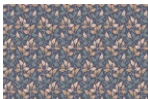
**BACKGROUND**  
PE408  
WHITE LINEN



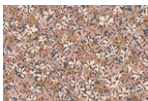
**FABRIC C**  
HAV26400  
BRUSHED  
LEAVES GRIS



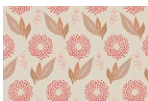
**BACKING**  
PE557  
SLATE



**FABRIC D**  
HAV26405  
GLORIA ROOTS



**FABRIC E**  
HAV26403  
SEASONS FALL



**FABRIC F**  
HAV26404  
CLAYFLOWER  
SWEET

PROJECT INFO



PROJECT NAME: DELTILLE QUILT

DESIGNED BY: RUNNING STITCH QUILTS

FINISHED SIZE: 57" x 68"

[CLICK HERE FOR PATTERN](#)

PATTERN AVAILABLE FOR PURCHASE