

## A square quilted pillow with a complex geometric pattern. The pattern is composed of various colored squares and triangles, including red, pink, blue, and cream, arranged in a symmetrical, star-like design. The pillow is shown against a plain white background.





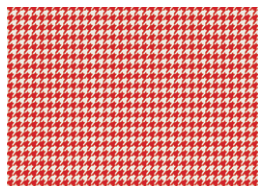
# CHECKERED PILLOWS

DESIGNED BY AGFstudio

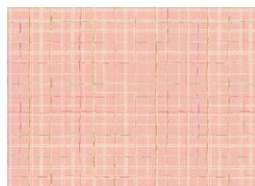
## CHECKERED

Elements

FABRICS DESIGNED BY AGF STUDIO



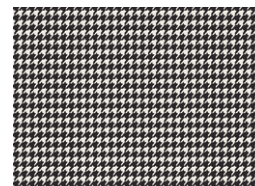
CHE30101  
HOUNDSTOOTH ROUGE



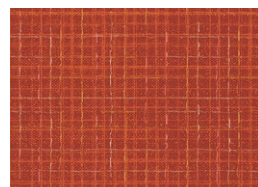
CHE30203  
TWEED DAHLIA



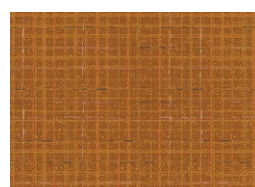
CHE30204  
TWEED VANILLA



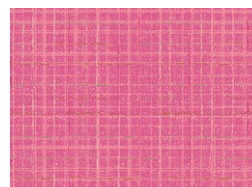
CHE30105  
HOUNDSTOOTH ONYX



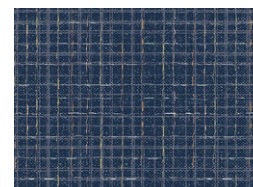
CHE30201  
TWEED PIMENTO



CHE30200  
TWEED SAFFRON



CHE30202  
TWEED BUBBLEGUM



CHE30205  
TWEED INDIGO



FEEL THE DIFFERENCE © 2023 Courtesy of Art Gallery Quilts LLC. All Rights Reserved.

# CHECKERED PILLOWS

FINISHED SIZE | 15" x 15"

## FABRIC REQUIREMENTS

Fabric <b>A</b>	CHE30101	1/8 yd.
Fabric <b>B</b>	CHE30203	1/8 yd.
Fabric <b>C</b>	CHE30204	1/8 yd.
Fabric <b>D</b>	CHE30105	1/8 yd.
Fabric <b>E</b>	CHE30200	1/8 yd.
Fabric <b>F</b>	CHE30201	1/8 yd.
Fabric <b>G</b>	CHE30202	1/8 yd.
Fabric <b>H</b>	CHE30205	1/8 yd.
Fabric <b>I</b>	CHE30204	1 yd.

### BACKING FABRIC

CHE30204 - 1yd (*Suggested*)

## CUTTING DIRECTIONS

1/4" seam allowances are included.  
WOF means width of fabric.

One (1) 3 1/2" X 28 1/2" Strips from Fabrics **A, B, C, D, E, F, G, H.**

## CONSTRUCTION

Sew all rights sides together with 1/4" seam allowance.

Start by sewing the strips together in the following order: **A, B, C, D, E, F, G, H.** ( See Diagram 1 for reference)

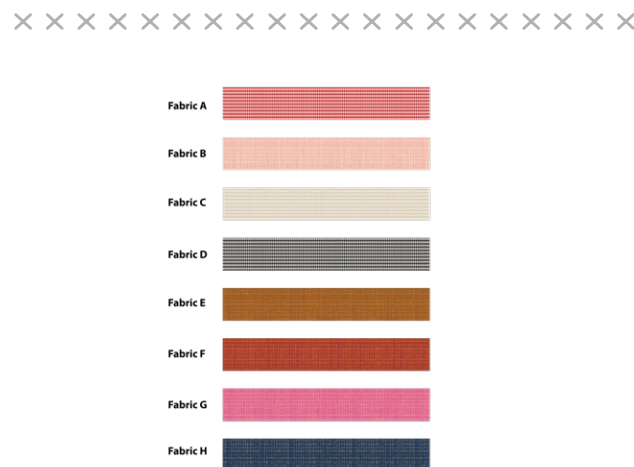


DIAGRAM 1

- Draw a 16" x 16" square on a paper and use it as template, placing it on point. (See Diagram 2)

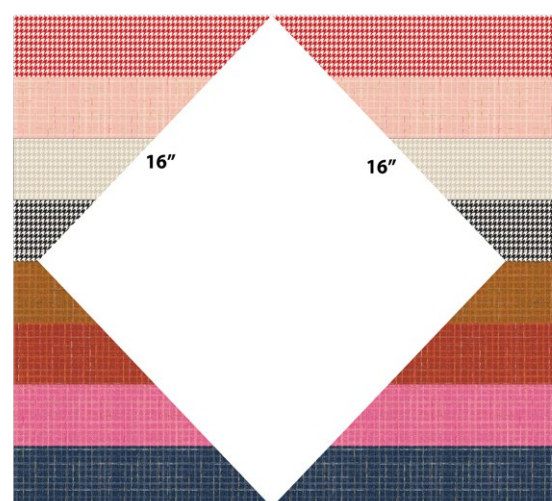


DIAGRAM 2

- Cut all around the template and that will be the top of your pillow.



DIAGRAM 3



- This is how the top of the pillow will look.



DIAGRAM 4

- Take the left overs and sew them as shown on Diagram below.

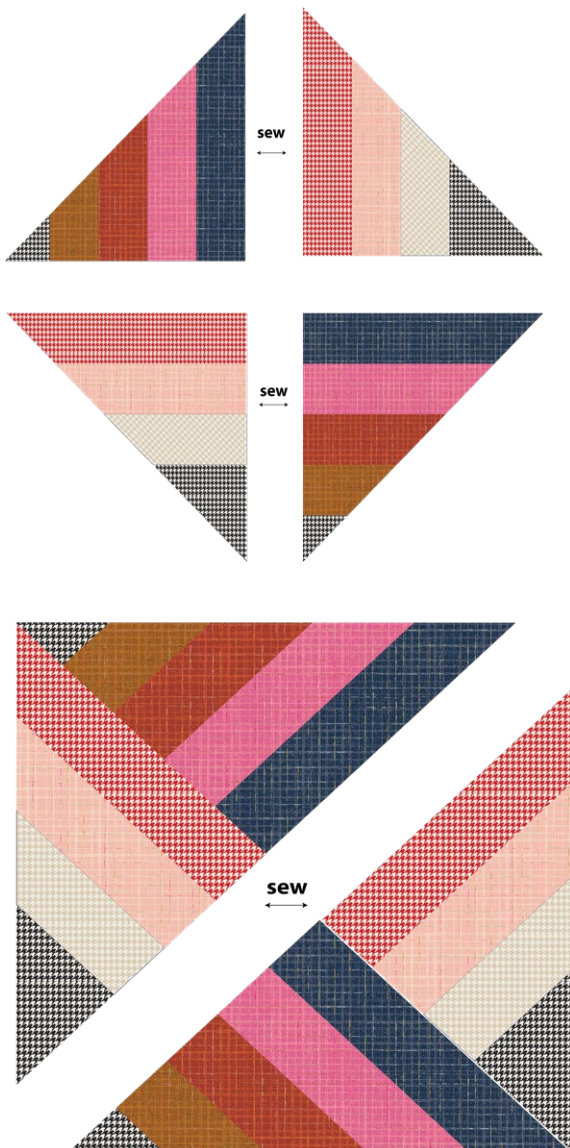


DIAGRAM 5

- Trim it to 16" x 16" and this is how the top of the second pillow will look.

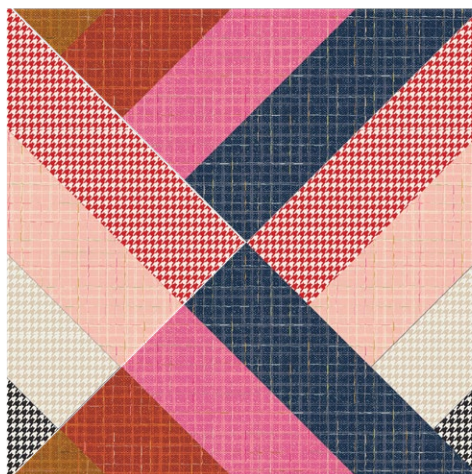


DIAGRAM 6

## CREATING THE BACK PILLOW

*Sew all rights sides together with  $\frac{1}{4}$ " seam allowance. Press open.*

- To make a envelope back for your pillow take both 16" x 12" rectangles and fold one 12" side on each rectangle in  $\frac{1}{2}$ " and press and then fold another  $\frac{1}{2}$ " and press.
- Top stitch as close to the edge as possible.
- Place rectangles right side together on top of each other to the front of your pillow and stitch all the way around your pillow at  $\frac{1}{4}$ " seam allowance.
- Clip corners at seam allowance and flip piece to the right side of the fabric.
- Fill pillow with a 15" x 15" pillow form and enjoy!

XXXXXXXXXXXXXXXXXXXXXXXXXXXXXXXXXXXX

*Congratulations*  
*& enjoy*

XXXXXXXXXXXXXXXXXXXXXXXXXXXXXXXXXXXX



[artgalleryfabrics.com](https://artgalleryfabrics.com)

NOTE: While all possible care has been taken to ensure the accuracy of this pattern, We are not responsible for printing errors or the way in which individual work varies.

Please read instructions carefully before starting the construction of this quilt. If desired, wash and iron your fabrics before starting to cut.

© 2023 Courtesy of Art Gallery Quilts LLC. All Rights Reserved.

