

X  
X  
X  
X  
X  
X  
X  
X  
X  
X  
X  
X  
X

## This image displays a highly detailed quilt block, likely a variation of a traditional 'star' or 'snowflake' pattern. The central motif is a large, multi-pointed starburst, meticulously constructed from numerous small triangles and squares. The color palette is rich and varied, including deep reds, vibrant oranges, earthy browns, and muted greens, all set against a light cream background. The starburst is framed by a wide, decorative border composed of repeating geometric shapes, possibly a 'log cabin' or 'railroad' pattern. The overall design is symmetrical and intricate, showcasing the artistry of traditional quilting.

XXXXXXXXXXXXXXXXXXXXXXXXXXXX





# WILD Keepsakes

QUILT DESIGNED BY AGFstudio

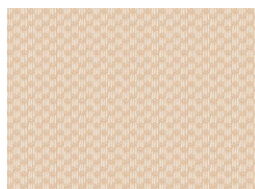
Woodland  
Keeper



FABRICS DESIGNED BY MAUREEN CRACKNELL



WKP79500  
WILDWOOD NIGHTFALL



WKP79512  
UNTAMED LUMINOUS



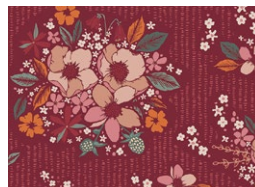
WKP79507  
PETIT TWINKLESTAR RAY



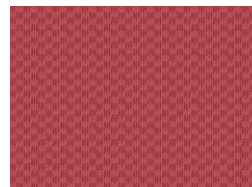
WKP79505  
FLORAL KEEPSAKES SOFT



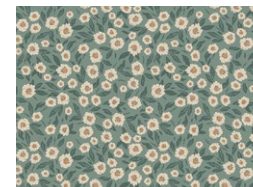
WKP79506  
PALE INFLORESCENCE



WKP79515  
FLORAL KEEPSAKES DUSK



WKP79502  
UNTAMED SOMBER



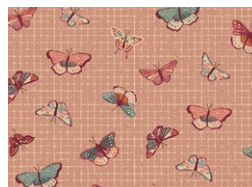
WKP79509  
FOREST SECRETS



WKP79504  
AWAKEN FOREST FERN



WKP79510  
WILDWOOD DAYBREAK



WKP79508  
FLUTTERING LATTICE





PE472  
CINNAMON



PE502  
FRESH SAGE



PE463  
ZAMBIA STONE



FINISHED SIZE | 80" x 80

## FABRIC REQUIREMENTS

Fabric <b>A</b>	WKP79500	1 yd.
Fabric <b>B</b>	WKP79512	3 $\frac{7}{8}$ yd.
Fabric <b>C</b>	WKP79507	$\frac{5}{8}$ yd.
Fabric <b>D</b>	PE521	$\frac{1}{2}$ yd.
Fabric <b>E</b>	WKP79505	$\frac{1}{2}$ yd.
Fabric <b>F</b>	WKP79506	$\frac{5}{8}$ yd.
Fabric <b>G</b>	WKP79515	$\frac{1}{2}$ yd.
Fabric <b>H</b>	WKP79502	$\frac{3}{8}$ yd.
Fabric <b>I</b>	WKP79509	F8.
Fabric <b>J</b>	WKP79504	$\frac{3}{8}$ yd.
Fabric <b>K</b>	PE472	$\frac{3}{8}$ yd.
Fabric <b>L</b>	WKP79510	F8.
Fabric <b>M</b>	PE502	$\frac{3}{8}$ yd.
Fabric <b>N</b>	PE463	$\frac{3}{8}$ yd.
Fabric <b>O</b>	WKP79508	1 yd.

### BACKING FABRIC

PE502 7  $\frac{1}{2}$  yds (*Suggested*)

### BINDING FABRIC

Fabric **O** WKP79508 (*Included*)

## CUTTING DIRECTIONS

*$\frac{1}{4}$ " seam allowances are included.  
WOF means width of fabric.*

- Two (2) 16 $\frac{7}{8}$ " squares from fabric **A**.
- Eight (8) 4 $\frac{1}{2}$ " squares from fabric **A**.
- Two (2) 10" squares from fabric **A**.
- Two (2) 16 $\frac{7}{8}$ " squares from fabric **B**.
- Nine (9) 10" squares from fabric **B**.
- Four (4) 28 $\frac{1}{2}$ " x 4 $\frac{1}{2}$ " rectangles from fabric **B**.
- Four (4) 24 $\frac{1}{2}$ " x 4 $\frac{1}{2}$ " rectangles from fabric **B**.
- Eight (8) 12 $\frac{1}{2}$ " x 4 $\frac{1}{2}$ " rectangles from fabric **B**.
- Sixteen (16) 8 $\frac{1}{2}$ " x 4 $\frac{1}{2}$ " rectangles from fabric **B**.
- Forty eight (48) 4 $\frac{1}{2}$ " squares from fabric **B**.
- Three (3) 10" squares from fabric **C**.
- Twelve (12) 4 $\frac{1}{2}$ " squares from fabric **C**.
- Four (4) 10" squares from fabric **D**.
- One (1) 10" square from fabric **E**.
- Four (4) 8 $\frac{1}{2}$ " x 4 $\frac{1}{2}$ " rectangles from fabric **E**.
- Eight (8) 4 $\frac{1}{2}$ " squares from fabric **E**.
- Twelve (12) 8 $\frac{1}{2}$ " x 4 $\frac{1}{2}$ " rectangles from fabric **F**.
- Eight (8) 4 $\frac{1}{2}$ " squares from fabric **F**.
- Two (2) 10" squares from fabric **G**.
- Two (2) 4 $\frac{7}{8}$ " squares from fabric **G**.
- Twelve (12) 4 $\frac{1}{2}$ " squares from fabric **G**.
- Two (2) 10" squares from fabric **H**.
- One (1) 10" square from fabric **I**.
- Eight (8) 4 $\frac{1}{2}$ " squares from fabric **J**.
- Four (4) 8 $\frac{1}{2}$ " x 4 $\frac{1}{2}$ " rectangles from fabric **J**.
- Two (2) 10" squares from fabric **K**.
- One (1) 10" square from fabric **L**.
- Eight (8) 4 $\frac{1}{2}$ " squares from fabric **M**.
- Four (4) 8 $\frac{1}{2}$ " x 4 $\frac{1}{2}$ " rectangles from fabric **M**.



- One (1) 10" square from fabric **N**.
- Four (4) 4½" squares from fabric **N**.
- Two (2) 4⅞" squares from fabric **O**.
- Twelve (12) 4½" squares from fabric **O**.
- Four (4) 8½" x 4½" rectangles from fabric **O**.
- Eight (8) 1½" x WOF strips from fabric **O** (binding).

## CONSTRUCTION

*Sew all rights sides together with ¼" seam allowance.*

### Magic 8 technique:

- Place one (1) 10" square from fabrics **A** and **B** right sides facing together.
- Draw a line diagonally corner to corner using a mechanical pencil or frixion pen.



DIAGRAM 1

- Stitch at ¼" from each side of the drawn lines.



DIAGRAM 2

- You will cut a horizontal line, vertical line, and on both diagonal lines. following the diagram below.

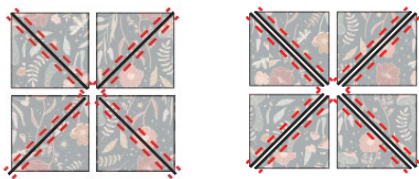


DIAGRAM 3

- Trim each HST to 4½" square. You will have a total of eight (8) HST.



DIAGRAM 4

- Repeat the same Magic 8 instructions for the following 10" squares of the following fabric combinations:

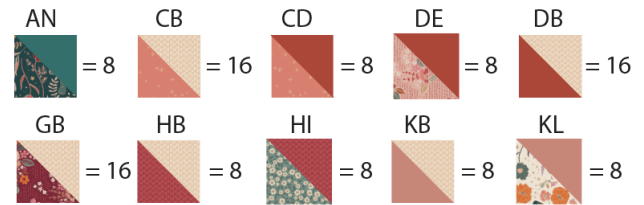


DIAGRAM 5

### Half Square Triangle (HST) Construction:

- Take two (2) 4⅞" fabric squares .
- Draw a line diagonally corner to corner using a mechanical pencil or frixion pen.
- Stitch at ¼" from each side of the drawn lines.
- Cut the pieces apart along the marked diagonal line.
- Press and trim to a 4½" perfect square.

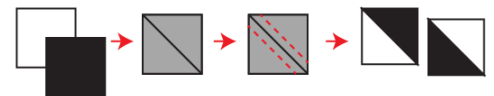


DIAGRAM 6

- Take one (1) 4⅞" square from fabrics **G** and **O** and follow the half square triangle construction creating two (2) **GO** hst's following the diagram below.
- Repeat the same construction in order to create a total of four (4) **GO** hst's following the diagram below.



DIAGRAM 7

- Join two (2) 16⅞" squares from fabric **A** and **B**.

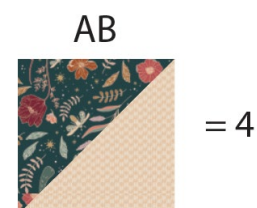


DIAGRAM 8

## Flying Geese Construction:

- Take one (1)  $8\frac{1}{2}$ " x  $4\frac{1}{2}$ " rectangle and two (2)  $4\frac{1}{2}$ " squares.
- Place one (1)  $4\frac{1}{2}$ " square on top of the  $8\frac{1}{2}$ " x  $4\frac{1}{2}$ " rectangle.
- Align it to the left side of the rectangle, right sides facing together and draw a diagonal line on top of the square following the diagram below.



DIAGRAM 9

- Stitch on the drawn line.
- Trim excess fabric leaving  $\frac{1}{4}$ " seam allowance and press open.



DIAGRAM 10

- Take one (1)  $4\frac{1}{2}$ " square and align it on the right side of the fabric  $8\frac{1}{2}$ " x  $4\frac{1}{2}$ " rectangle, right sides facing together.
- Draw a diagonal line on top of the square.
- Stitch on the drawn line and then press open.

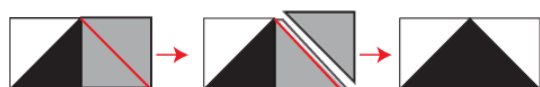


DIAGRAM 11

- Follow the diagram below for each flying geese fabric combination.

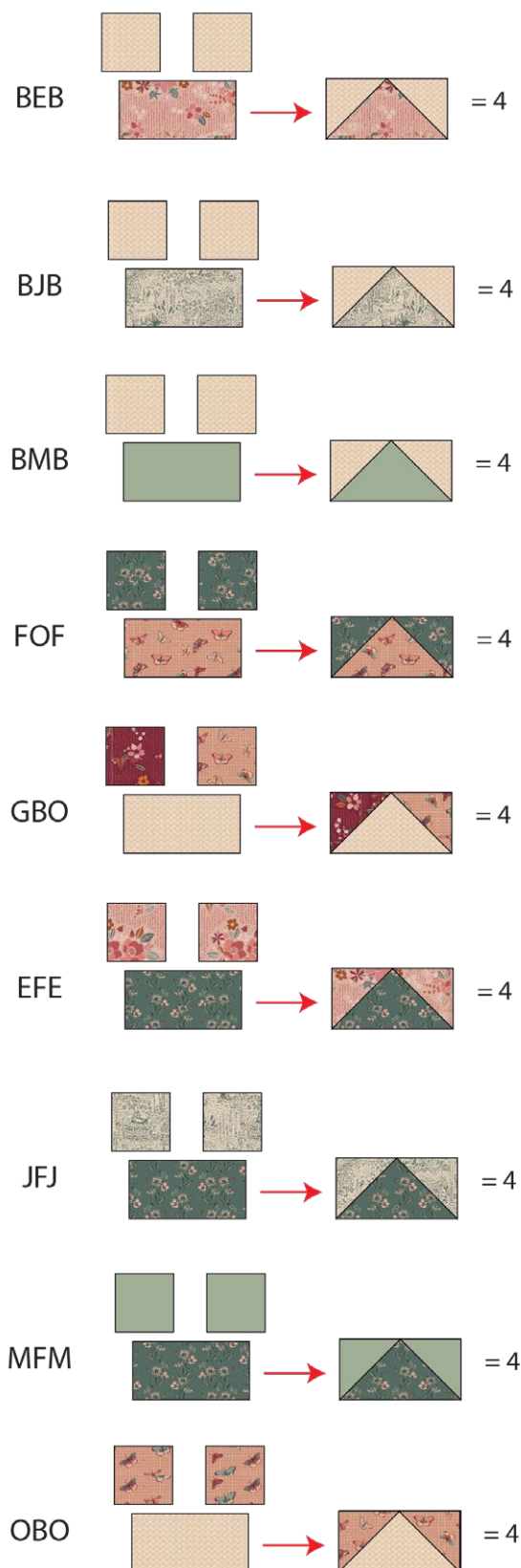


DIAGRAM 12

- Take your HST from fabric **GO** and join them following the diagram below.

### Center block



DIAGRAM 13

- Follow the diagram below for rows 1 through 4 assembly.



DIAGRAM 14

- Now, join two (2) 16 1/2" **AB** hst on each side of your assembled piece.

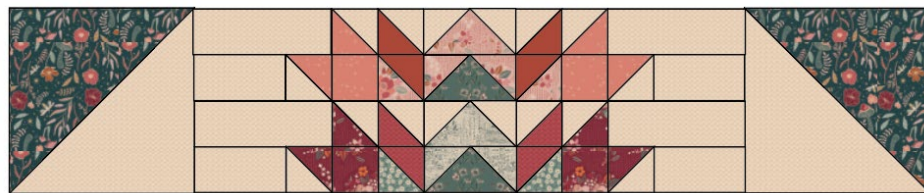


DIAGRAM 15



- For row 10, take two (2) **BEB**, two (2) **EFE**, two (2) **BJB**, two (2) **JFJ**, two (2) **BMB**, two (2) **MFM**, two (2) **FOF**, two (2) **OBO**, two (2) **GBO** and Center block and join each piece following the diagram below.

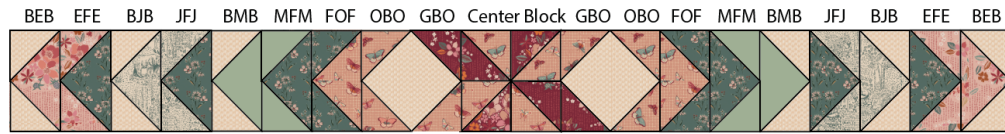


DIAGRAM 16

- Follow the diagram below for rows 5-15 assembly.

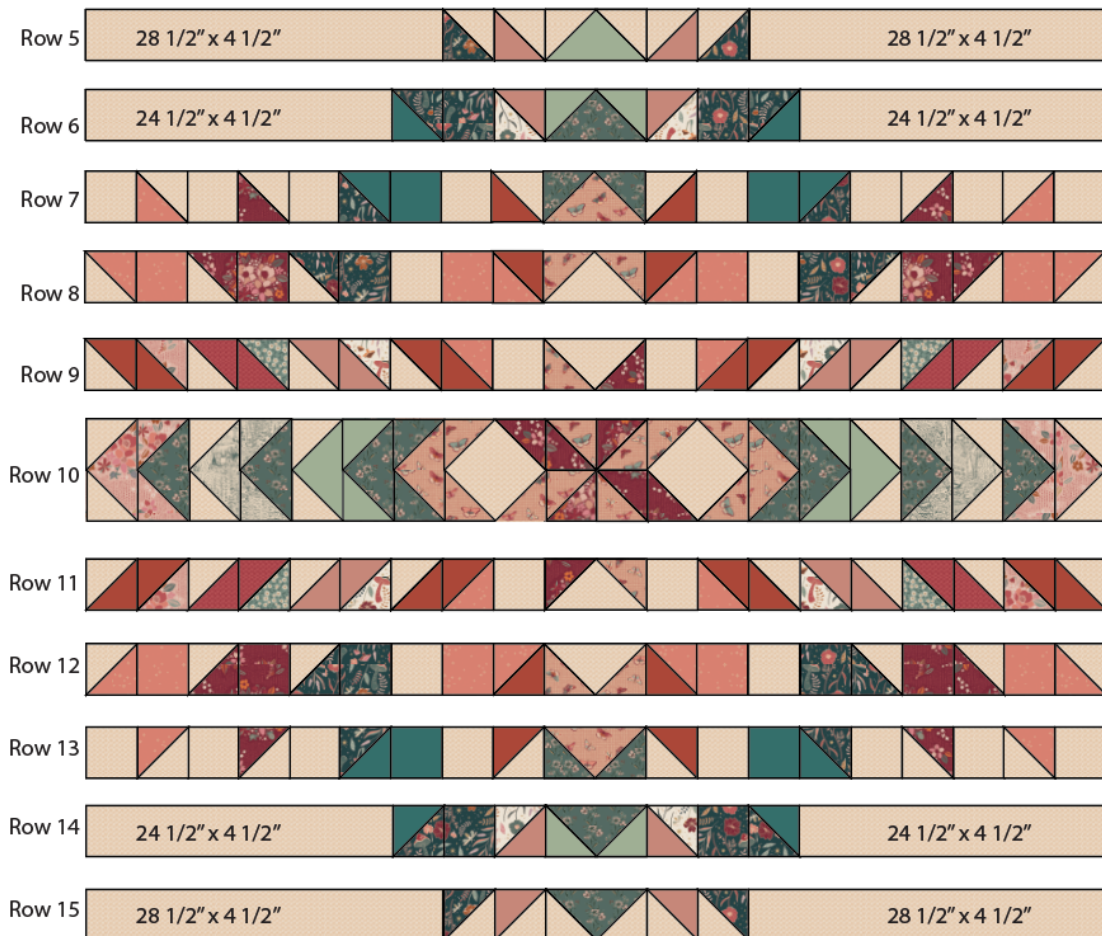


DIAGRAM 17



- Follow the diagram below for rows 16-19 assembly

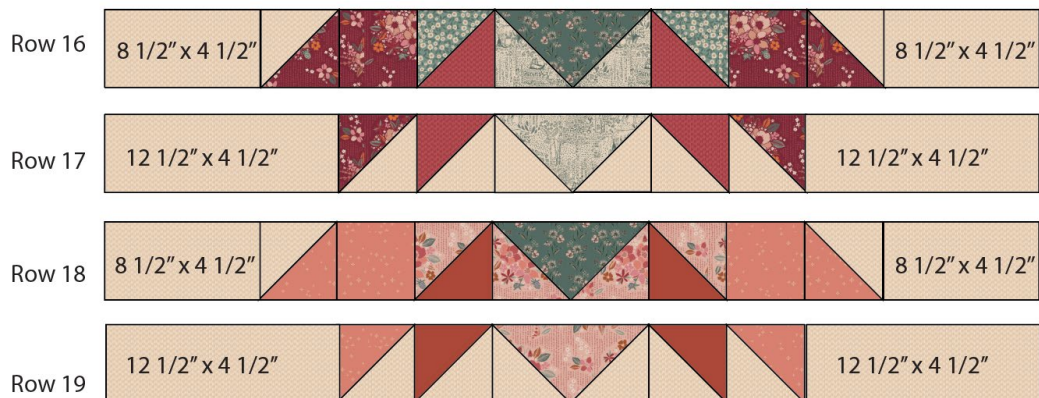


DIAGRAM 18

- Now, pair (2) 16½" **AB** hst on each side of your assembled piece.



DIAGRAM 19

- Join all rows together in order to complete your quilt top.

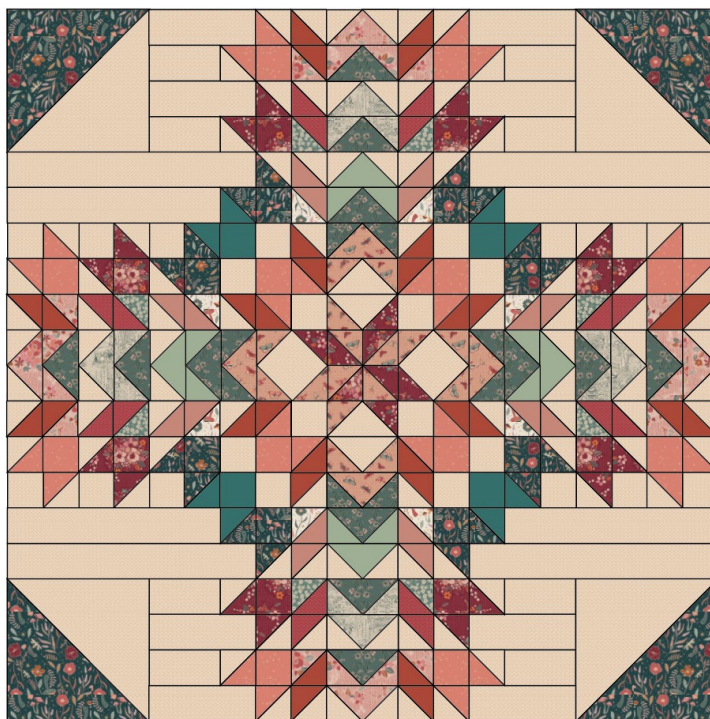


DIAGRAM 20

## QUILT ASSEMBLY

*Sew rights sides together.*

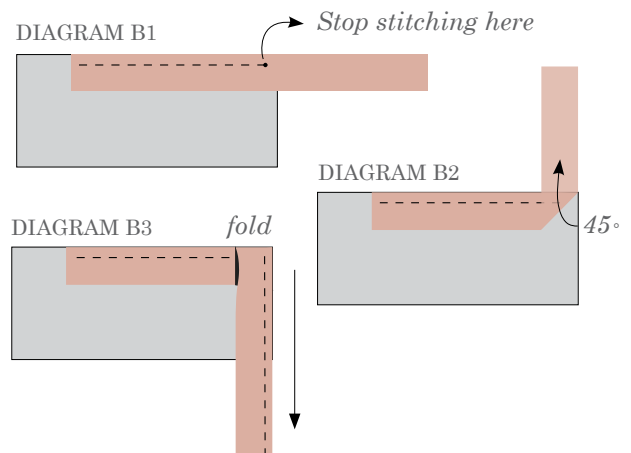
- Place BACKING FABRIC on a large surface wrong side up. Stretch it with masking tape against that surface.
- Place BATTING on top of backing fabric.
- Place TOP on top of the batting with right side facing up. Smooth away wrinkles using your hands.
- Pin all layers together and baste with basting thread, using long stitches. You can also use safety pins to join the layers.
- Machine or hand quilt starting at the center and working towards the corners. Remember that quilting motifs are a matter of personal preference. Have fun choosing yours!
- After you finished, trim excess of any fabric or batting, squaring the quilt to proceed to bind it.

- Stop stitching before you reach the last 5 or 6 inches. Cut the threads and remove the quilt from under the machine presser foot. Lay the loose ends of the binding flat along the quilt edge, folding the ends back on themselves where they meet. Press them together to form a crease. Using this crease as the stitching line, sew the two open ends of the binding with right sides together (you can help yourself marking with a pencil if the crease is difficult to see).
- Trim seam to  $\frac{1}{4}$ " and press open. Complete the sewing. Turn binding to back of the quilt, turn raw edge inside and stitch by hand using blind stitch.

## BINDING

*Sew rights sides together.*

- Cut enough strips  $1\frac{1}{2}$ " wide by the width of the fabric  to make a final strip 330" long. Start sewing the binding strip in the middle of one of the sides of the quilt, placing the strip right side down and leaving an approximated 5" tail. Sew with  $\frac{1}{4}$ " seam allowance (using straight stitch), aligning the strip's raw edge with the quilt top's raw edge.
- Stop stitching  $\frac{1}{4}$ " before the edge of the quilt (DIAGRAM B 1). Clip the threads. Remove the quilt from under the machine presser foot. Fold the strip in a motion of  $45^\circ$  and upward, pressing with your fingers (DIAGRAM B2). Hold this fold with your finger, bring the strip down in line with the next edge, making a horizontal fold that aligns with the top edge of the quilt (DIAGRAM B3). Start sewing at  $\frac{1}{4}$ " of the border, stitching all the layers. Do the same in the four corners of the quilt.





XXXXXXXXXXXXXXXXXXXXXXXXXXXX

*Congratulations  
& enjoy*

XXXXXXXXXXXXXXXXXXXXXXXXXXXX



[artgalleryfabrics.com](http://artgalleryfabrics.com)

NOTE: While all possible care has been taken to ensure the accuracy of this pattern, We are not responsible for printing errors or the way in which individual work varies.

Please read instructions carefully before starting the construction of this quilt. If desired, wash and iron your fabrics before starting to cut.

© 2022 Courtesy of Art Gallery Quilts LLC. All Rights Reserved.