

ever AFTER  
PILLOW



FUSIONS

by AGF

FREE PATTERN

XXXXXXXXXXXXXXXXXXXXXXXXXXXX

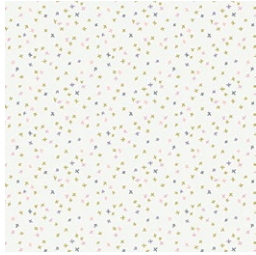


# ever AFTER

DESIGNED BY AGFstudio



## ethereal FUSION



**FUS-E-101**  
TEENSY WEENSY ETHEREAL  
*by AGF Studio*



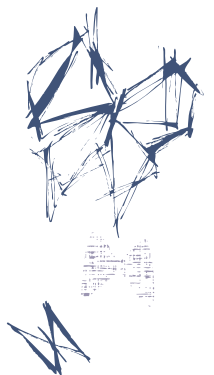
**FUS-E-104**  
FILAMENTS ETHEREAL  
*by Sharon Holland*



**FUS-E-107**  
SACRED SEEDS ETHEREAL  
*by April Rhodes*



FEEL THE DIFFERENCE © 2022 Courtesy of Art Gallery Quilts LLC. All Rights Reserved.



## FABRIC REQUIREMENTS

Fabric **A** FUS-E-101 1 yd.  
Fabric **B** FUS-E-104 ½ yd.  
Fabric **C** FUS-E-107 ⅛ yd.

### BACKING FABRIC

Fabric **A** FUS-E-101 (*included*)

## CUTTING DIRECTIONS

¼" seam allowances are included.

- One (1) 20½" x 20½" from fabric **A**.
- Two (2) 22½" x 15" from fabric **A**.
- One (1) 1½" x 22½" from fabric **B**.
- One (1) 1½" x 20½" from fabric **B**.
- One (1) 1½" x 22½" from fabric **C**.
- One (1) 1½" x 20½" from fabric **C**.
- Use template below to cut the ballet dress using fabric **B** (*cut on fold*)

## CONSTRUCTION

Sew all rights sides together with ¼" seam allowance.

- Center ballet dress template from fabric **B** on the center of the 20½" square from fabric **A**.
- Sew at a ¼" swam allowance around the edges.
- This particular piece has rough edges.

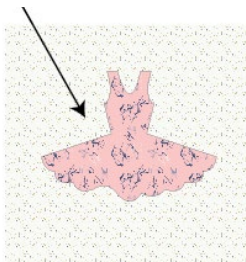


DIAGRAM 1

- Sew the 1½" x 20½" from fabrics **B** and **C** to the sides of the unit.
- Then sew the 1½" x 22½" from fabrics **B** and **C** to the top and bottom of the unit.



DIAGRAM 2

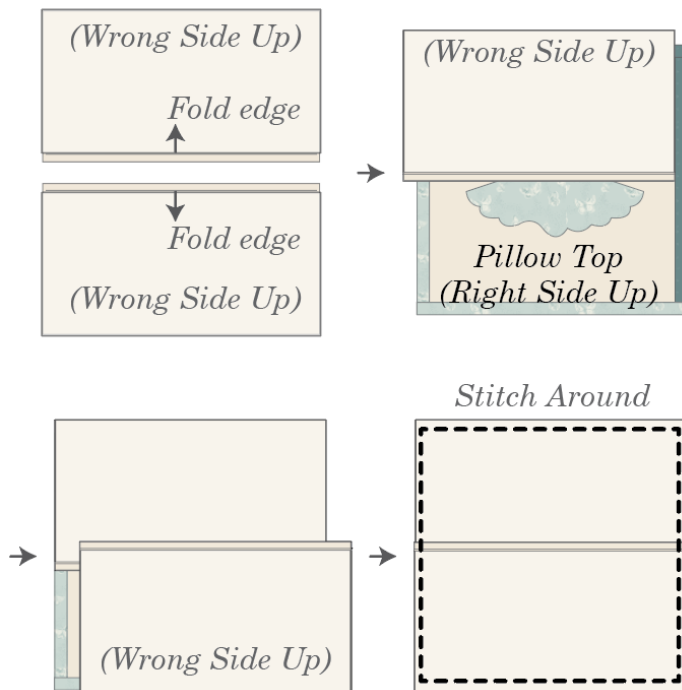
- Take batting fabric and quilt as desired. Also, feel free to add tulle to the skirt portion of the dress for a special touch!!

## CREATING THE BACK PILLOW

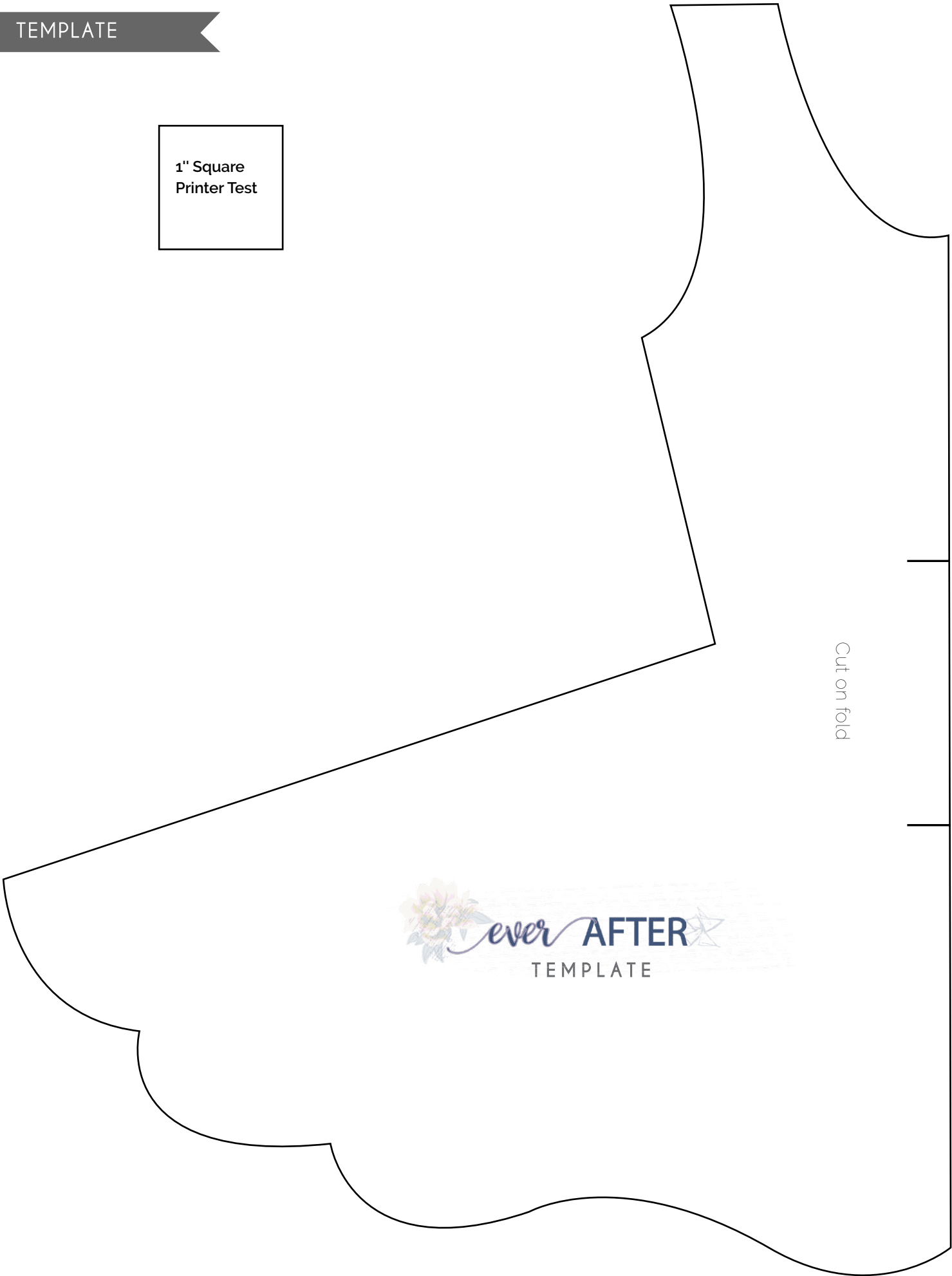
Sew all rights sides together with ¼" seam allowance. Press open.

- Take both 22" x 15" rectangles from fabric **A**.
- Fold one bottom edge ½" towards the wrong side of the fabric of one of the rectangle.
- Fold the same edge ½" again and edge stitch the fold in place to have a clean edge.
- Repeat the same for the top edge of the bottom piece.
- Take the quilted pillow top and lay it flat right side up.

- Take one rectangle from fabric **A** and align it wrong side up to the top side of the pillow top.
- Take the other rectangle from fabric **A** and align it wrong side up to the bottom side of the pillow top.
- Pin the three pieces in place and sew around the edges at  $\frac{1}{4}$ ".
- Clip the corners and flip the piece to the right side of the fabric.
- Fill the pillow with a 22" x 22" pillow form and enjoy!



1" Square  
Printer Test



XXXXXXXXXXXXXXXXXXXXXXXXXXXXXXXXXXXX

*Congratulations  
& enjoy*

XXXXXXXXXXXXXXXXXXXXXXXXXXXXXXXXXXXX



[artgalleryfabrics.com](http://artgalleryfabrics.com)

NOTE: While all possible care has been taken to ensure the accuracy of this pattern, We are not responsible for printing errors or the way in which individual work varies.

Please read instructions carefully before starting the construction of this quilt. If desired, wash and iron your fabrics before starting to cut.