

X
X
X
X
X
X
X
X
X
X
X
X



x x x x x x x x x x x x x x x x x x x

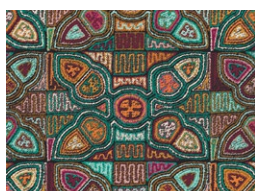


WAIKY

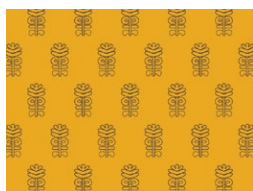
QUILT DESIGNED BY AGFstudio

ANDINA
△△△△

FABRICS DESIGNED BY AGF STUDIO

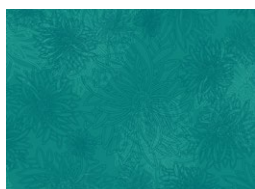


AND-63700
FLOWERING MOLAS



AND-63707
GOLDEN HUACA

ADDITIONAL BLENDERS FOR THIS PROJECT



FE-539
ESMERALDA



FEEL THE DIFFERENCE © 2020 Courtesy of Art Gallery Quilts LLC. All Rights Reserved.

WAIKY

FINISHED SIZE | 18" x 18"

FABRIC REQUIREMENTS

Fabric A	AND-63700	¼ yd.
Fabric B	AND-63707	⅝ yd.
Fabric C	FE-539	¼ yd.

BACKING FABRIC
AND-63707 (Included)

ADDITIONAL MATERIALS
Fringe Tassel Trim (Suggested)

CUTTING DIRECTIONS

¼" seam allowances are included.
WOF means width of fabric.

Fabric **A**

- Nine (9) 4½" x 2½" rectangles.

Fabric **B**

- Two (2) 7½" x 18½" rectangles.

Fabric **C**

- Eighteen (18) 2½" squares.

CONSTRUCTION

Sew all rights sides together with ¼" seam allowance.

Flying Geese

- Place one (1) 2½" square from fabric **E** to the right edge of one (1) 4½" x 2½" rectangle from fabric **A**, mark a diagonal line from the top left corner to the bottom right corner, sew through the line and trim ¼" away from the seam. Press.
- Now place another 2½" square from fabric **E** and place it to the left edge of the sewn piece, mark a diagonal line from the top right corner to the bottom left corner, sew through the line and trim ¼" away from the seam. Press.
- Repeat this step to make a total of nine (9) **EAE** flying geese.

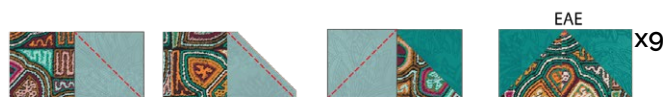


DIAGRAM 1

- Sew all flying geese together as shown on diagram 2.

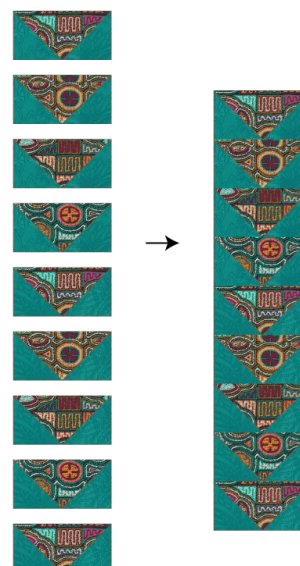


DIAGRAM 2

- Place one (1) 7½" x 18½" rectangle from fabric **B** on each side of **EAE** flying geese column.
- If you would like to add a fringing trim. Make sure to place it on each side of the flying geese column as shown on diagram below and sew all pieces together.

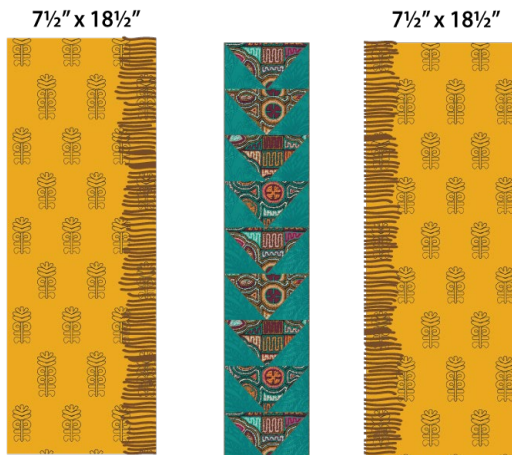


DIAGRAM 3

- Quilt as desired.



DIAGRAM 4

BACK OF THE PILLOW

*¼" seam allowances are included.
WOF means width of fabric.*

- Take both 13½" x 18½" rectangles from fabric **B**.
- Fold on the top edge ½" towards the wrong side of the fabric of one of the rectangle.
- Fold the same edge ½" again and edge stitch the fold in place to have a clean edge.
- Repeat the same but this time on the top edge of the other piece.
- Take the quilted pillow top and lay it flat right side up.
- Take one rectangle from fabric **B** and align it wrong side up to the right side of the pillow top.
- Take the other rectangle from fabric **B** and align it wrong side up to the left side of the pillow top.
- Pin the three pieces in place and sew around the edges at ¼".
- Clip the corners and flip the piece to the right side of the fabric.
- Fill the pillow with a 18" x 18" pillow form and enjoy!

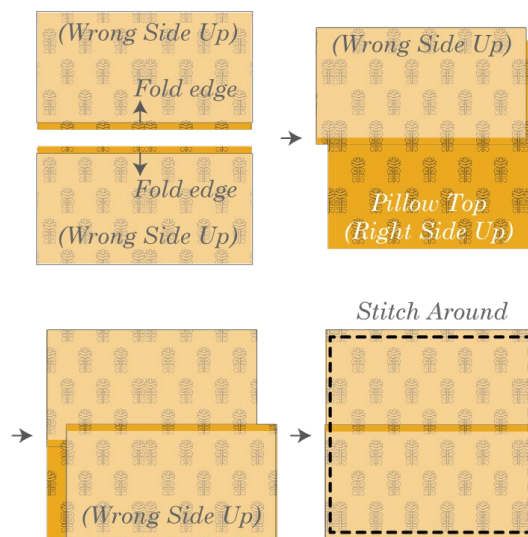


DIAGRAM 5

XXXXXXXXXXXXXXXXXXXXXXXXXXXXXXXXXXXX

*Congratulations
& enjoy*

XXXXXXXXXXXXXXXXXXXXXXXXXXXXXXXXXXXX



artgalleryfabrics.com

NOTE: While all possible care has been taken to ensure the accuracy of this pattern, We are not responsible for printing errors or the way in which individual work varies.

Please read instructions carefully before starting the construction of this quilt. If desired, wash and iron your fabrics before starting to cut.

© 2020 Courtesy of Art Gallery Quilts LLC. All Rights Reserved.