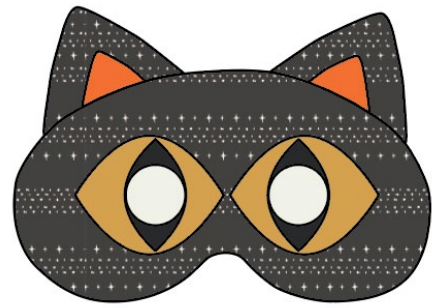


## A collection of three handmade Halloween masks on a bright pink background. The top mask is orange with a pumpkin shape and two triangular eye holes. The bottom-left mask is black with a cat-like shape and two large yellow eye holes. The bottom-right mask is white with a wide, horizontal shape and two large eye holes, decorated with black lip prints. Several black bat cutouts are scattered around the masks.



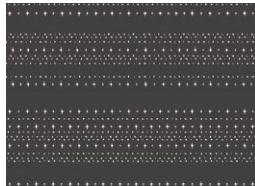
# HALLOWEEN MASKS

DESIGNED BY AGFstudio



## Sweet 'n Spookier

FABRICS DESIGNED BY AGF STUDIO



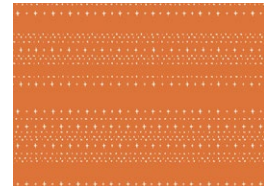
SNS13036  
STARS ALIGNED SPOOKY



SNS13040  
FANGTASTIC LIPS



SNS13032  
WINGING IT MIDNIGHT



SNS-13001  
STARS ALIGNED TRICK

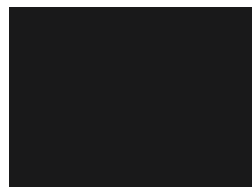
### ADDITIONAL BLENDERS FOR THIS PROJECT



PE406  
BURNT ORANGE



PE421  
HONEY



PE413  
CAVIAR



PE449  
MANDARIN



# HALLOWEEN MASKS

FINISHED SIZE | 6½" x 9",  
5" x 9", 5" x 9"

## FABRIC REQUIREMENTS

|                 |          |         |
|-----------------|----------|---------|
| Fabric <b>A</b> | SNS13036 | ¼ yd.   |
| Fabric <b>B</b> | PE406    | scraps. |
| Fabric <b>C</b> | PE421    | scraps. |
| Fabric <b>D</b> | PE413    | F8.     |
| Fabric <b>E</b> | SNS13040 | F8.     |
| Fabric <b>F</b> | SNS13032 | ⅛ yd.   |
| Fabric <b>G</b> | SNS13001 | ¼ yd.   |
| Fabric <b>H</b> | PE449    | F8.     |

### ADDITIONAL MATERIALS

Felt Fabric (3 sheets of 8½" x 11").

¾" Elastic.

Steam-a-seam double side fusible tape.

## CUTTING DIRECTIONS

¼" seam allowances are included.  
WOF means width of fabric.

### Cat mask

- One (1) template 1 from fabric **A**.
- One (1) 27" x 2½" strip from fabric **A** (casing).
- Two (2) template 2 from fabric **B**.
- Two (2) template 3 from fabric **C**.
- Two (2) template 4 from fabric **D**.
- One (1) template 1.1 from Felt Fabric.

### Vampire mask

- Two (2) template 7 from fabric **D**.
- One (1) template 5 from fabric **E**.
- One (1) template 6 from fabric **F**.
- One (1) 27" x 2½" strip from fabric **F** (casing).
- One (1) template 7.1 from Felt Fabric.

### Punking Mask

- Two (2) template 12 from fabric **D**.
- One (1) template 8 from fabric **G**.
- One (1) 27" x 2½" strip from fabric **G** (casing).
- One (1) template 10 from fabric **H**.
- One (1) template 10.1 from fabric **H**.
- One (1) template 11 from fabric **H**.
- One (1) template 11.1 from fabric **H**.
- One (1) template 8.1 from Felt Fabric.

## CONSTRUCTION

*Sew all rights sides together with ¼" seam allowance.*

- Take your 27" x 2½" strip from fabric **A** and create your casing. You can adjust the length of the strip to your liking.
- Fold the long strip in half lengthwise, with the right sides together.
- Use a sewing gauge to make sure your sewn tube will be ⅝" inch wide.
- Now, attach a safety pin to one end of the tube and turn the safety pin back to the inside of the tube. Push it until it comes out to the other end. Your casing will now be right side out.

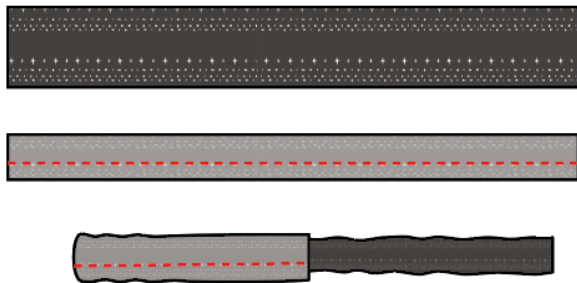


DIAGRAM 1

- Cut the elastic and insert it into the tube, using the same safety pin.
- The length of the elastic depends on the size of your head and could be anywhere from 12 to 15 inches.
- To find the best fit for you, just stretch a piece of elastic around your head, from ear to ear (approximately).
- Sew across each tube opening to secure the elastic in place.

- Apply steam-a-seam double side fusible tape on template 1, template 2, template 3 and template 4.
- Cut out your felt fabric using Template 1.1. This template will be much bigger than template 1. It will help you sew your piece with enough space.
- Take template 1 from fabric **A** and place it on top of the felt cutout from template 1.1.
- Use Template 1 as your guide to position and center the mask with the felt fabric.
- Take the elastic casing previously sewn and place the ends below fabric **A** and on top of the felt fabric.
- Use your template as a guide on where to put the elastics. Make sure the rest of the elastic is on top of fabric **A**. We only need to sandwich the ends.
- Pin all three pieces in place.
- Press and then zig zag stitch all around your piece. For better result, set up your zig zag stitch to a shorter length.

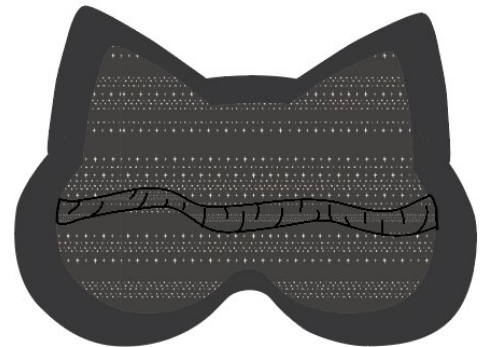


DIAGRAM 2

- Once you have top stitched take a small pair of scissors and cut away the felt fabric at about ⅛" of distance.

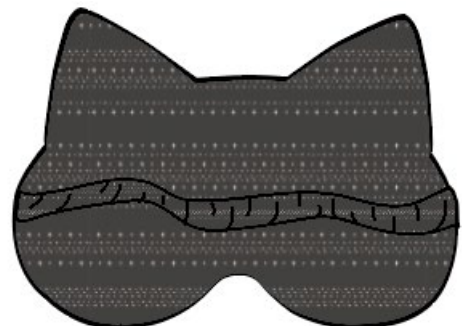


DIAGRAM 3

- Move away the elastic and pin it in an area of the mask that's comfortable for you to finish your mask and take template 2 pieces from fabric **B** and place them on the ear area. Use template 1 as your position guide.
- Zig zag stitch to hold your pieces.



DIAGRAM 4

- Move away again the elastic and pin it in an area of the mask that's comfortable for you finish your mask.
- Take template 3 and 4 pieces and place them following the diagram below.
- Use your template 1 piece as your guide for placement.



DIAGRAM 5

XX

- Top stitch the eye pieces and the top stitch with a small lenght stitch the inner eye area (dotted area).
- Then with a pair of small scissors, cut carefully the four layers of fabric. Cut very close to the sewn area.



DIAGRAM 6

- To create the other masks, just follow through the same construction with its corresponding templates.
- Enjoy!



XXXXXXXXXXXXXXXXXXXXXXXXXXXXXXXXXXXX

*Congratulations  
& enjoy*

XXXXXXXXXXXXXXXXXXXXXXXXXXXXXXXXXXXX

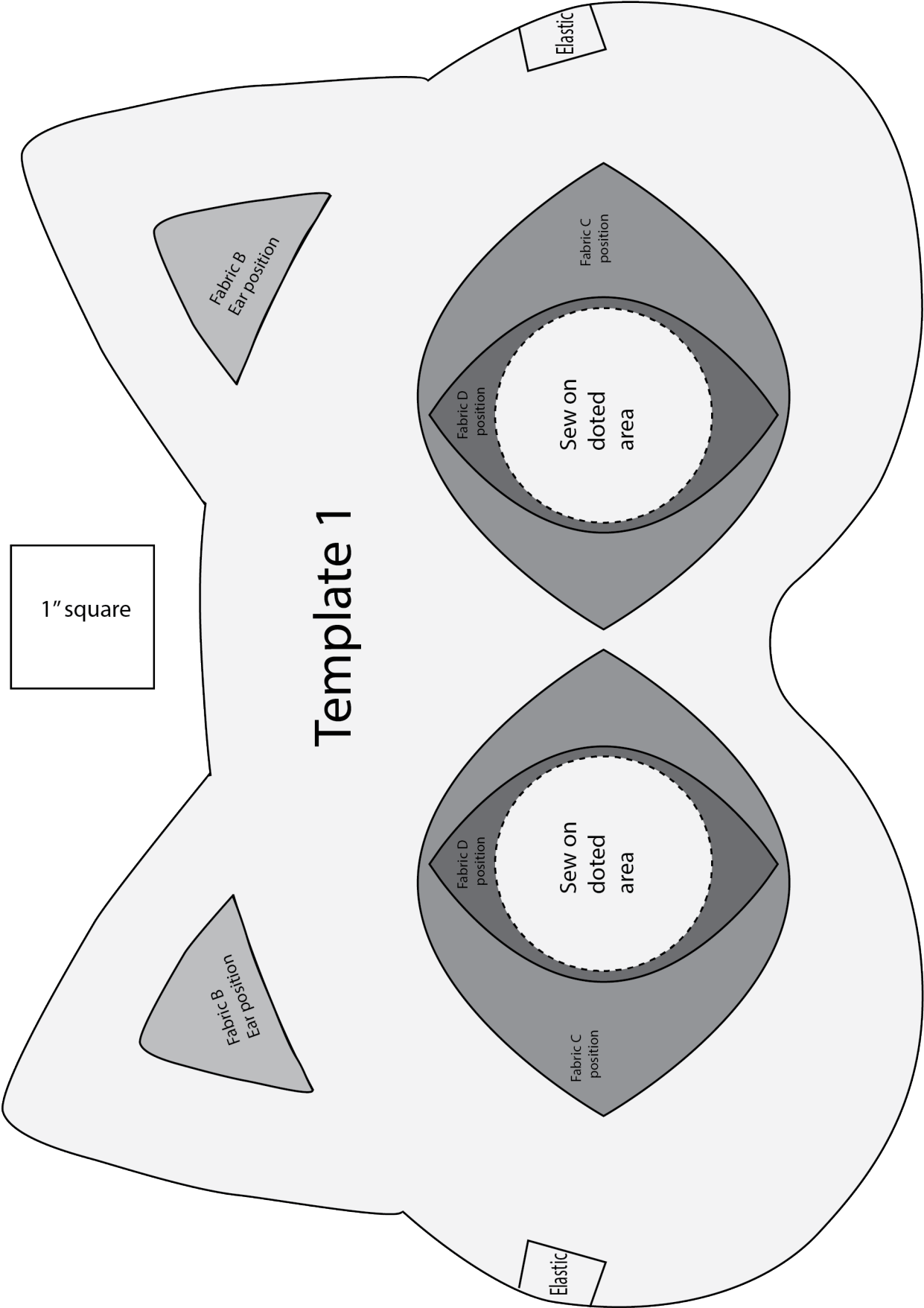


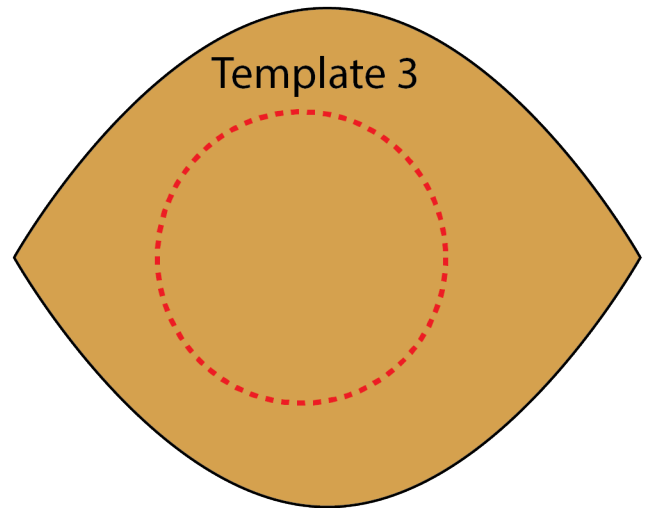
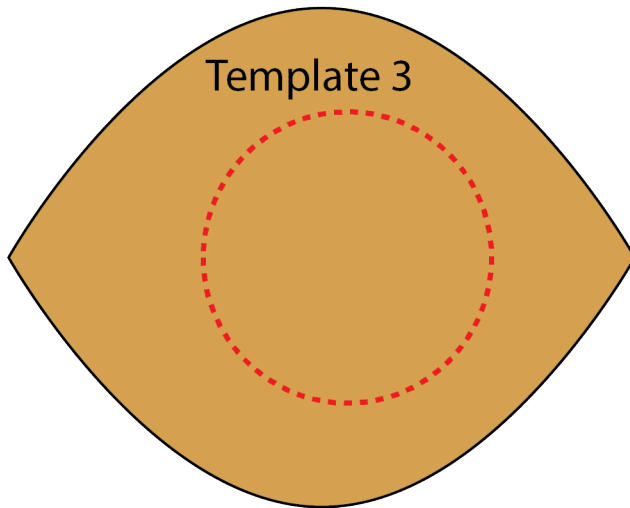
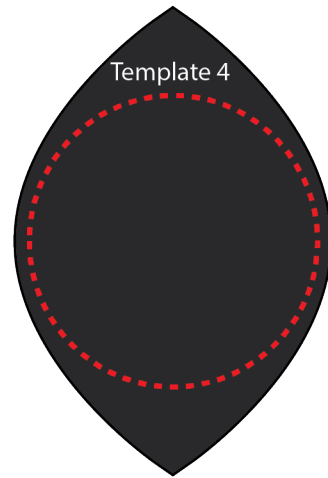
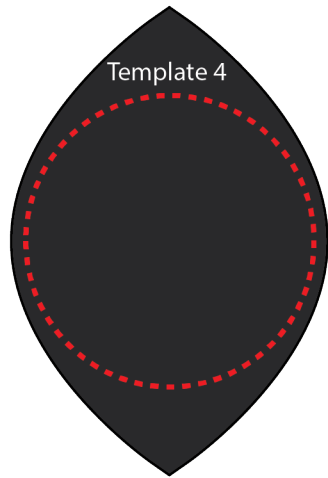
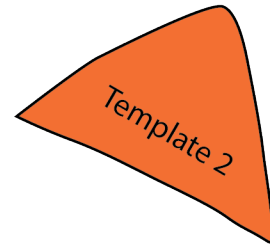
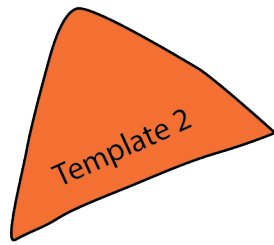
[artgalleryfabrics.com](http://artgalleryfabrics.com)

NOTE: While all possible care has been taken to ensure the accuracy of this pattern, We are not responsible for printing errors or the way in which individual work varies.

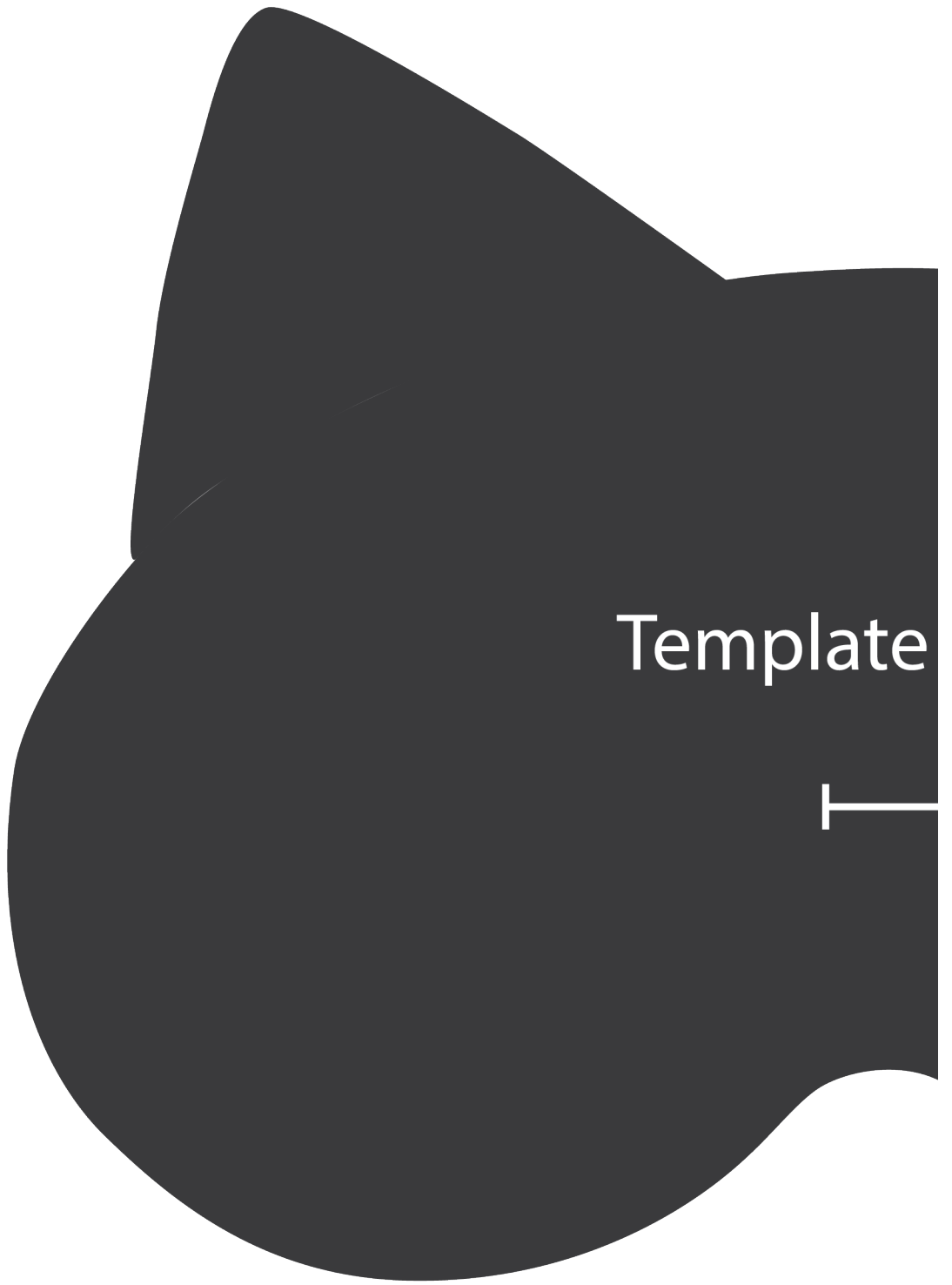
Please read instructions carefully before starting the construction of this quilt. If desired, wash and iron your fabrics before starting to cut.

© 2022 Courtesy of Art Gallery Quilts LLC. All Rights Reserved.



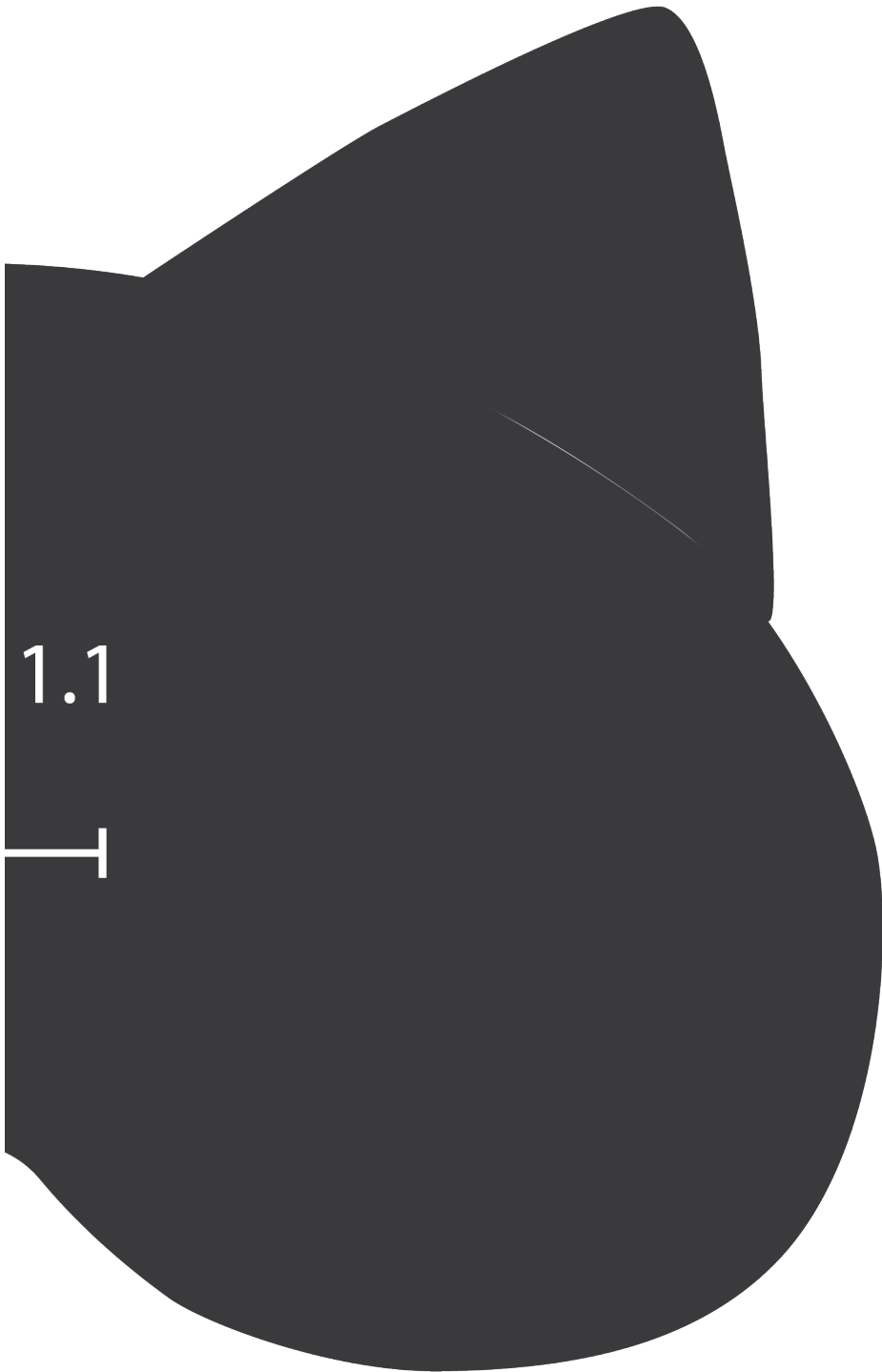






Template





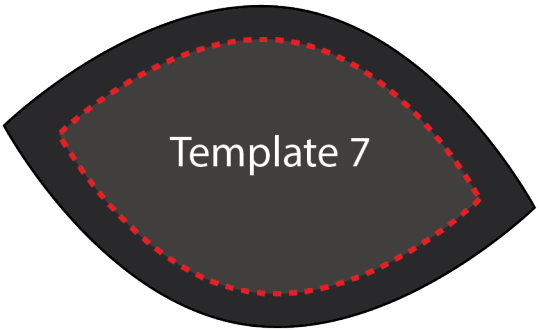
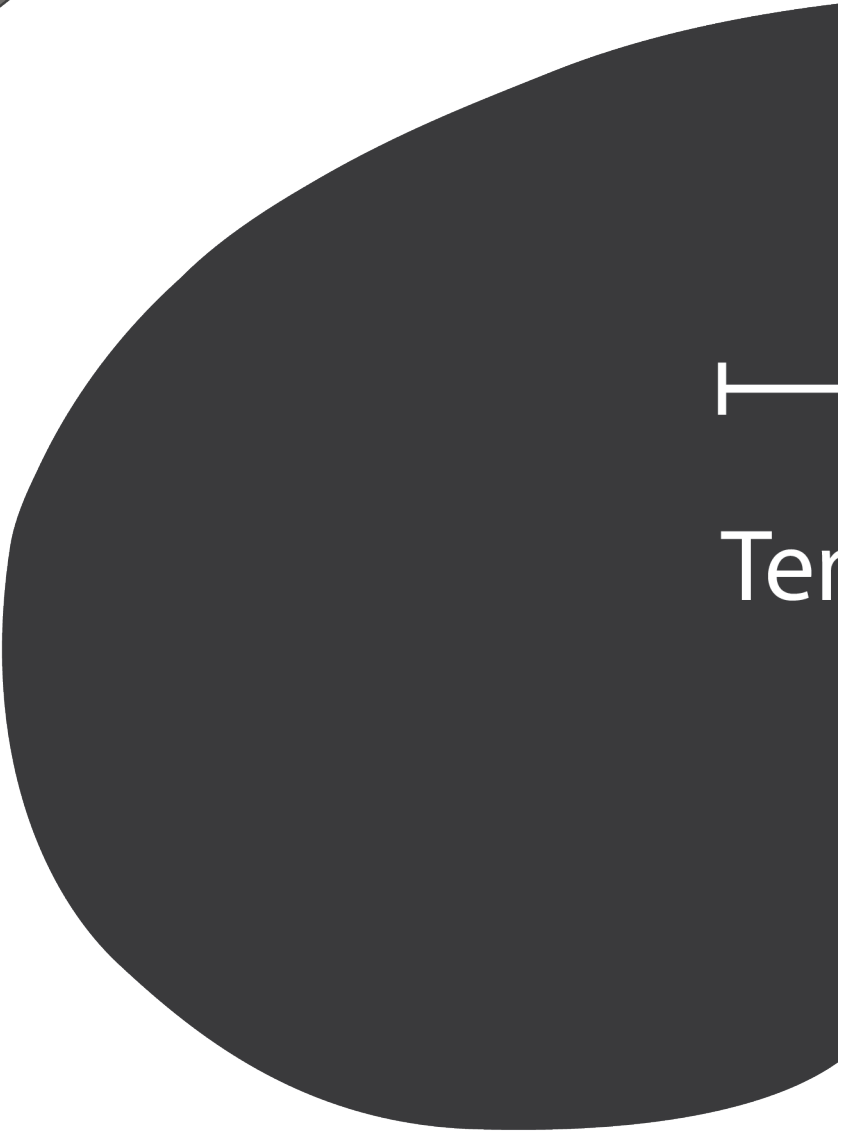
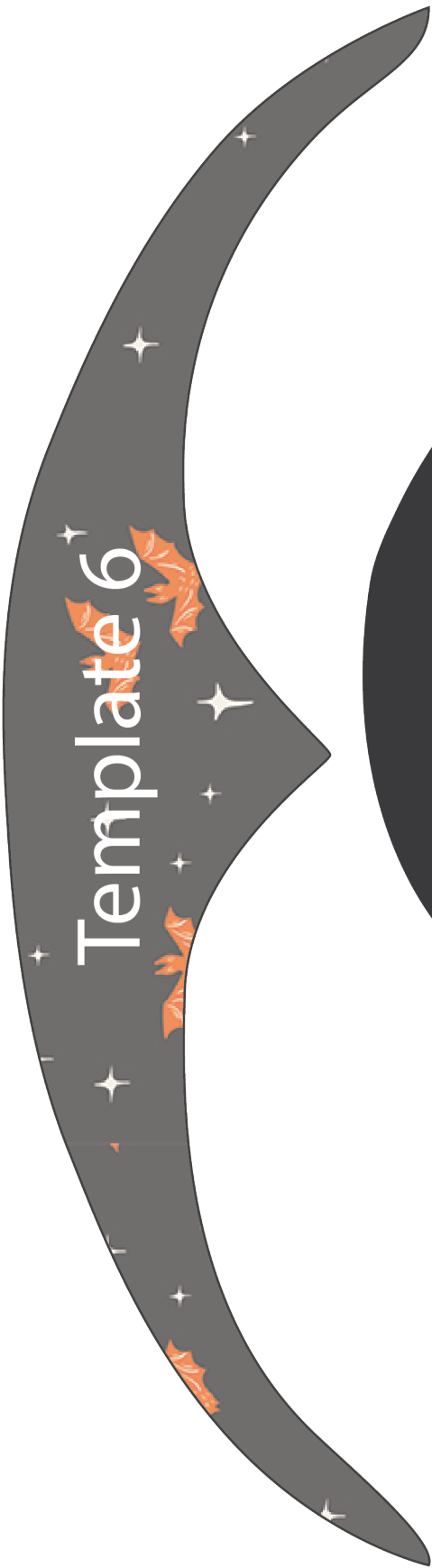
1.1







# Template 5





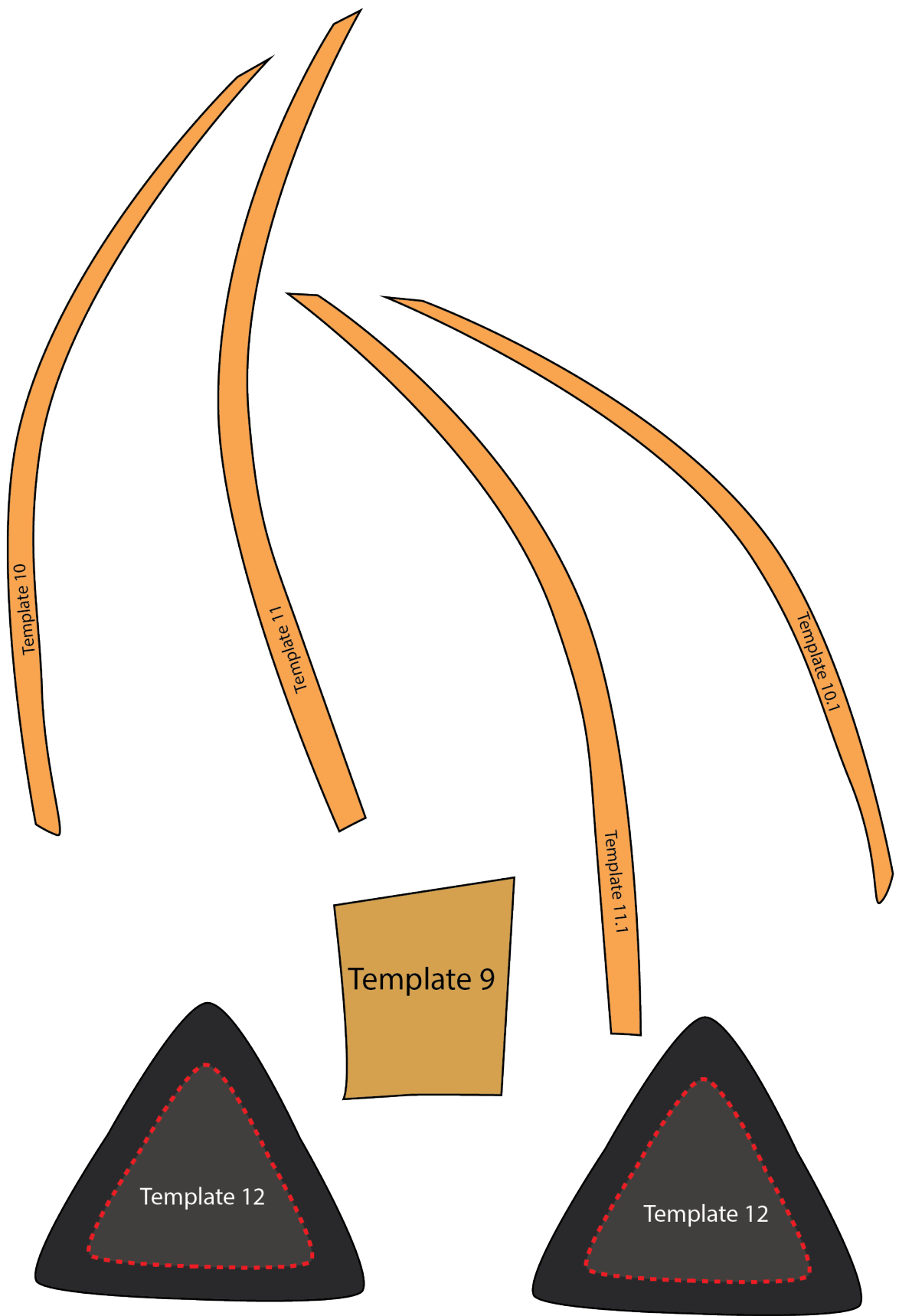
# Template 5.1







# Template 8





T  
Temp



plate 8.1