

Magic
POTION

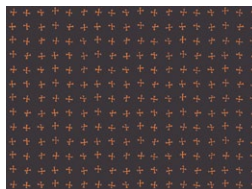




QUILT DESIGNED BY AGFstudio



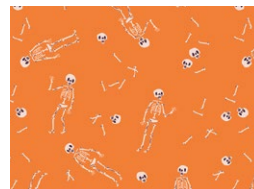
FABRICS DESIGNED BY AGF STUDIO



SNS-13016
CROSSED BONES NIGHT



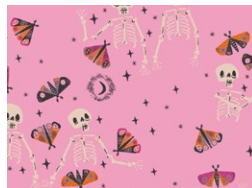
SNS-13017
BOO CREW



SNS-13018
MISTER NO BODY



SNS-13019
HOCUS POCUS



SNS-13020
BONE TO BE WILD



SNS-13022
CROSSED BONES DAY



SNS-13024
WINGING IT BRIGHT



SNS-13025
PICK-A-BOO CANDIED



SNS-13028
SWEET HAUNTING PANEL



SNS-13011
WITCH'S WARDROBE





FINISHED SIZE | 50" x 62"

FABRIC REQUIREMENTS

Fabric A	SNS-13017	$\frac{3}{8}$ yd.
Fabric B	SNS-13019	$\frac{3}{8}$ yd.
Fabric C	SNS-13024	$\frac{5}{8}$ yd.
Fabric D	SNS-13018	$\frac{3}{8}$ yd.
Fabric E	SNS-13020	$\frac{3}{8}$ yd.
Fabric F	SNS-13011	1 yd.
Fabric G	SNS-13022	$\frac{5}{8}$ yd.
Fabric H	SNS-13016	1 $\frac{1}{4}$ yd.
Fabric I	SNS-13025	$\frac{3}{8}$ yd.
Fabric J	SNS-13028	1 yd.

BACKING FABRIC

SNS-13026 3 $\frac{1}{2}$ yds (Suggested)

BINDING FABRIC

Fabric **G** SNS-13022 (Included)

CUTTING DIRECTIONS

$\frac{1}{4}$ " seam allowances are included.
WOF means width of fabric.

- Three (3) 10 $\frac{7}{8}$ " squares from fabric **A**.
- One (1) 10 $\frac{7}{8}$ " square from fabric **B**.
- Five (5) 10 $\frac{7}{8}$ " squares from fabric **C**.
- One (1) 10 $\frac{7}{8}$ " square from fabric **D**.
- Three (3) 10 $\frac{7}{8}$ " squares from fabric **E**.
- Ten (10) 10 $\frac{1}{2}$ " squares from fabric **F**.
- Three (3) 10 $\frac{7}{8}$ " squares from fabric **G**.

- Twenty four (24) 10 $\frac{1}{2}$ " x 2 $\frac{1}{2}$ " strips from fabric **H**.
- Eight (8) 2 $\frac{1}{2}$ " x WOF strips from fabric **H**.
- Two (2) 10 $\frac{7}{8}$ " squares from fabric **I**.
- Ten (10) fussy cut triangles from fabric **J**. (when cutting the triangles make sure to cut inside the stroke line, since this will be applique you don't want those lines exposed)



CONSTRUCTION

Sew all rights sides together with $\frac{1}{4}$ " seam allowance.

HST CONSTRUCTION

- There are four different (4) different HST's combinations, some of the fabrics are directional, place close attention at the end of the construction since you would like to use just the HST's with the proper fabric placement, you will have leftovers in order to be able to have all the corrected placement of fabrics.
- Start by taking one (1) 10 $\frac{7}{8}$ " square from fabric **A** and one (1) 10 $\frac{7}{8}$ " square from fabric **G**.
- Place one on top of the other, right side of fabrics together.
- Use a fabric marker, to make a diagonal line from corner.
- Start sewing $\frac{1}{4}$ " away from the traced line to the left and $\frac{1}{4}$ " to the right.

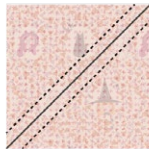


DIAGRAM 1

- Using the rotary cutter cut on top of the drawn line to end up having two (2) $10\frac{1}{2}$ " HST's.

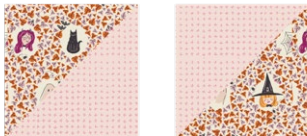
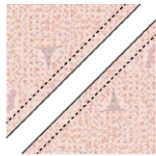


DIAGRAM 2

- Repeat the same procedure using the same fabric combination to end up having a total of six (6) **AG** HST.
- You are going to use just the three (3) HST's that have the correct placement for fabric **A**.
- Press and set aside.



DIAGRAM 3

- Repeat the same HST procedure with the $10\frac{7}{8}$ " squares from fabric **C** & **E**.
- You'll need three (3) HST's from this combination.
- Set a side.



DIAGRAM 4

- Repeat the same HST procedure with the $10\frac{7}{8}$ " squares from fabric **C** & **I**.
- You'll need two (2) HST's from this combination.
- Set a side.



DIAGRAM 5

- Repeat the same HST procedure with the $10\frac{7}{8}$ " squares from fabric **B** & **D**.
- You'll need two (2) HST's from this combination, this time you don't need to worry about fabric directions.
- Set a side.



DIAGRAM 6

- Take the ten (10) $10\frac{1}{2}$ " squares from fabric **F** and the ten (10) fussy cut triangles from fabric **J**.
- Appliqué the triangles using Steam-A-Seam paper on top of the fabric **F** squares as shown in the diagram below.
- If you are not planning to quilt on top of this block it is recommended to top stitch the triangles to hold them in place.
- Make ten (10) in total and set aside.

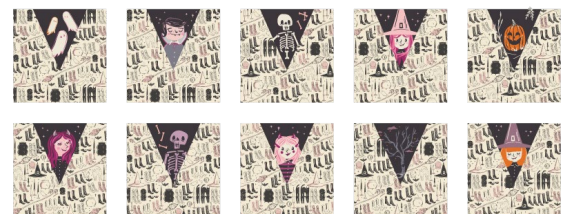


DIAGRAM 7

QUILT TOP ASSEMBLY

- In order to construct the quilt top you need to make four (4) columns with five (5) blocks each.
- Alternate the applique blocks with the HST's following the cover picture or diagram below for blocks placement
- Add one 2½" x 10½" strip from fabric **H** in between each block.

Column #1 Column #2 Column #3 Column #4



- Use the 2½" x WOF strips from fabric **H** to create five 62" strips.
- Attach them in-between the columns alternating the strips and the Columns.



• Voila!



QUILT ASSEMBLY

Sew rights sides together.

- Place BACKING FABRIC on a large surface wrong side up. Stretch it with masking tape against that surface.
- Place BATTING on top of backing fabric.
- Place TOP on top of the batting with right side facing up. Smooth away wrinkles using your hands.
- Pin all layers together and baste with basting thread, using long stitches. You can also use safety pins to join the layers.
- Machine or hand quilt starting at the center and working towards the corners. Remember that quilting motifs are a matter of personal preference. Have fun choosing yours!
- After you finished, trim excess of any fabric or batting, squaring the quilt to proceed to bind it.

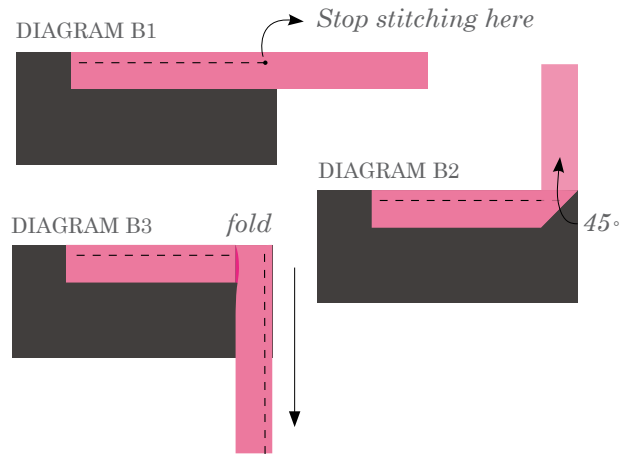
BINDING

Sew rights sides together.

- Cut enough strips 1½" wide by the width of the fabric **G** to make a final strip 322" long. Start sewing the binding strip in the middle of one of the sides of the quilt, placing the strip right side down and leaving an approximated 5" tail. Sew with ¼" seam allowance (using straight stitch), aligning the strip's raw edge with the quilt top's raw edge.

- Stop stitching $\frac{1}{4}$ " before the edge of the quilt (DIAGRAM B 1). Clip the threads. Remove the quilt from under the machine presser foot. Fold the strip in a motion of 45° and upward, pressing with your fingers (DIAGRAM B2). Hold this fold with your finger, bring the strip down in line with the next edge, making a horizontal fold that aligns with the top edge of the quilt (DIAGRAM B3). Start sewing at $\frac{1}{4}$ " of the border, stitching all the layers. Do the same in the four corners of the quilt.
- Stop stitching before you reach the last 5 or 6 inches. Cut the threads and remove the quilt from under the machine presser foot. Lay the loose ends of the binding flat along the quilt edge, folding the ends back on themselves where they meet. Press them together to form a crease. Using this crease as the stitching line, sew the two open ends of the binding with right sides together (you can help yourself marking with a pencil if the crease is difficult to see).

- Trim seam to $\frac{1}{4}$ " and press open. Complete the sewing. Turn binding to back of the quilt, turn raw edge inside and stitch by hand using blind stitch.



XXXXXXXXXXXXXXXXXXXXXXXXXXXXXXXXXXXX

*Congratulations
& enjoy*

XXXXXXXXXXXXXXXXXXXXXXXXXXXXXXXXXXXX



artgalleryfabrics.com

NOTE: While all possible care has been taken to ensure the accuracy of this pattern, We are not responsible for printing errors or the way in which individual work varies.

Please read instructions carefully before starting the construction of this quilt. If desired, wash and iron your fabrics before starting to cut.

© 2022 Courtesy of Art Gallery Quilts LLC. All Rights Reserved.