

featuring SIGNATURE COLLECTION BY SHARON HOLLAND

X
X
X
X
X
X
X
X
X
X
X
X
X
X
X

Lacey



FREE PATTERN

XX



Lacey

DESIGNED BY AGFstudio

Signature

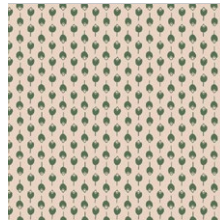
FABRICS DESIGNED BY SHARON HOLLAND



SGN-68704
LACEY COSMOS



SGN-68700
EXTEMPORE CELEBRATION



SGN-68707
TENDER ARRANGEMENT



ADDITIONAL BLENDERS FOR THIS PROJECT



PE-452
SPRUCE





FINISHED SIZE | 18" x 18"

FABRIC REQUIREMENTS

Fabric **A** SGN-68704 ¼ yd.
 Fabric **B** SGN-68707 ⅜ yd.
 Fabric **C** SGN-68700 ⅛ yd.
 Fabric **D** PE-452 ¾ yd.

BACKING FABRIC
 PE-452 (Included)

CUTTING INSTRUCTIONS

- Four (4) 3½" squares from fabric **A**.
- One (1) 2" x WOF strip from fabric **A**.
- Two (2) 7¾" squares from fabric **B**.
- One (1) 2" x WOF strip from fabrics **B** and **C**.
- Two (2) 18½" x 12" rectangles from fabric **D** (back of pillow).
- Two (2) 7¾" squares from fabric **D**.
- Two (2) 2" x WOF strips from fabric **D**.

CONSTRUCTION

Sew all rights sides together with ¼" seam allowance.

- Place two (2) 7¾" squares from fabrics **B** and **D** right sides facing together.
- Draw a line diagonally from corner to corner using a mechanical pencil or frixion pen.

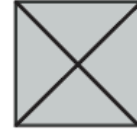


DIAGRAM 1

- Stitch at ¼" on each side of the drawn lines.

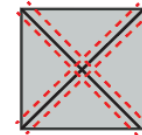


DIAGRAM 2

- Cut the squares in both directions.

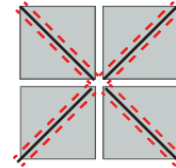


DIAGRAM 3

- Cut the squares diagonally from corner to corner. Then, cut vertically and horizontally.

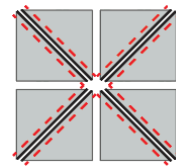


DIAGRAM 4

- Trim each HST to 3½" square. Repeat one (1) more time to have a total of sixteen (16) **BD**.

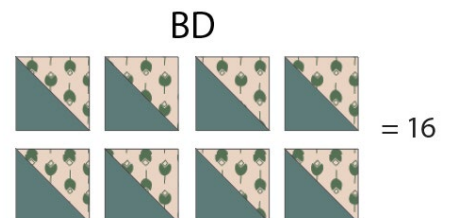
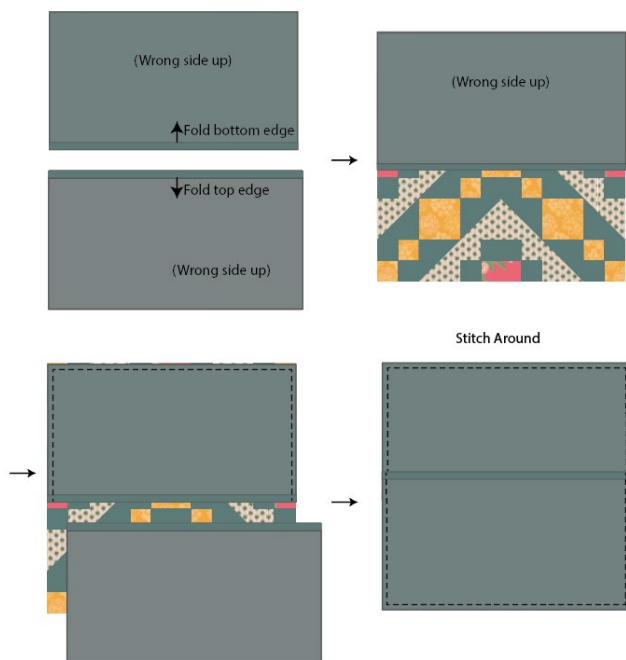


DIAGRAM 5

CREATING THE BACK PILLOW

Sew all rights sides together with 1/4" seam allowance.

- Take both 18½" x 12" rectangles from fabric **D**.
- Fold one bottom edge ½" towards the wrong side of the fabric of one of the rectangle.
- Fold the same edge ½" again and edge stitch the fold in place to have a clean edge.
- Repeat the same for the top edge of the bottom piece.
- Take the quilted pillow top and lay it flat right side up.
- Take one rectangle from fabric **D** and align it wrong side up to the top side of the pillow top.
- Take the other rectangle from fabric **D** and align it wrong side up to the bottom side of the pillow top.
- Pin the three pieces in place and sew around the edges at 1/4".
- Clip the corners and flip the piece to the right side of the fabric.
- Fill the pillow with a 18" x 18" pillow form and enjoy!



XX

*Congratulations
& enjoy*

XX



artgalleryfabrics.com

NOTE: While all possible care has been taken to ensure the accuracy of this pattern, We are not responsible for printing errors or the way in which individual work varies.

Please read instructions carefully before starting the construction of this quilt. If desired, wash and iron your fabrics before starting to cut.

© 2022 Courtesy of Art Gallery Quilts LLC. All Rights Reserved.