

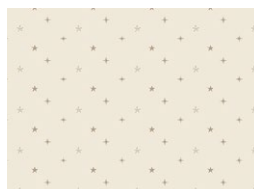
A square quilted pillow is displayed against a red brick wall. The pillow features a central pink star and four diamond-shaped medallions, each containing a floral pattern. The background fabric is light-colored with a subtle grid pattern, and the entire piece is bordered by a pink fabric. The pillow is resting on a grey surface.



QUILT DESIGNED BY AGFstudio



FABRICS DESIGNED BY AGF STUDIO



CHC25811
STARRY SKY SNOW



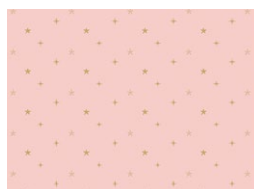
CHC25816
FESTIVE CAROLS



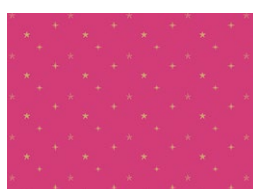
CHC25809
HOLIDAY SPLENDOR



CHC25805
FA LA LA



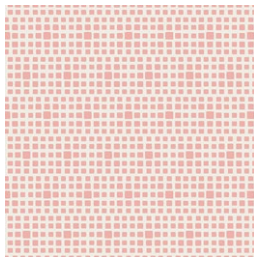
CHC25807
STARRY SKY SWEET



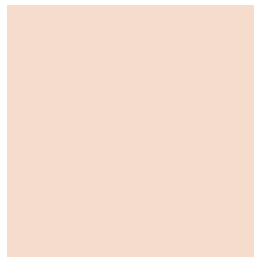
CHC25803
STARRY SKY PINK



ADDITIONAL BLENDERS FOR THIS PROJECT



SE 601
ROSEWATER



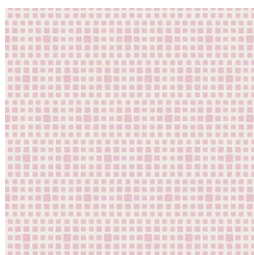
PE471
MACADAMIA



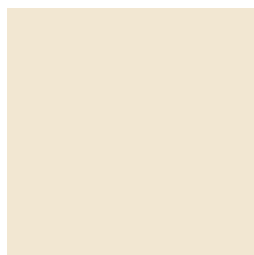
DSE700
CLOUD



FE548
CHALK



SE619
TUTU



PE436
CREME DE LA CREME



PE439
RASPBERRY



FINISHED SIZE | 60" x 60"

FABRIC REQUIREMENTS

Fabric A	CHC25811	¼ yd.
Fabric B	SE601	¼ yd.
Fabric C	PE471	½ yd.
Fabric D	CHC25816	½ yd.
Fabric E	DSE700	1 ⅞ yd.
Fabric F	CHC25809	⅞ yd.
Fabric G	FE548	¾ yd.
Fabric H	CHC25805	⅞ yd.
Fabric I	SE619	FQ.
Fabric J	CHC25807	1 yd.
Fabric K	PE436	1 yd.
Fabric L	PE439	FQ.
Fabric M	CHC25803	¾ yd.

BACKING FABRIC
CHC25802 4yds (Suggested)

BINDING FABRIC
Fabric **M** CHC25803 (Included)

CUTTING DIRECTIONS

¼" seam allowances are included.
WOF means width of the fabric.

- Five (5) 5⅞" squares from fabric **A**.
- Five (5) 5⅞" squares from fabric **B**.
- Nine (9) 5⅞" squares from fabric **C**.
- Nine (9) 5⅞" squares from fabric **D**.
- Fifteen (15) 5⅞" squares from fabric **E**.
- Fifteen (15) 5⅞" squares from fabric **F**.
- Eighteen (18) 5⅞" squares from fabric **G**.
- Eighteen (18) 5⅞" squares from fabric **H**.
- Twelve (12) 2½" x WOF strips from fabric **J**.

Subcut

- 180 squares. (See Diagram below for reference)
- Nine (9) 10⅞" squares from fabric **K**.
- Nine (9) 10⅞" squares from fabric **E**.
- Eight (8) Template 2 from fabric **I**.
- One (1) Template 1 from fabric **L**.
- Six (6) 1½" x WOF strips from fabric **M**.



DIAGRAM

XX

-

A quilt block design featuring a diagonal band of various patterned triangles and squares, set against a light beige background. The patterns include floral, geometric, and abstract designs in shades of pink, red, and grey.

- DIAGRAM 8



- Grab Block 2 and triangle from fabric **E**, place them right sides together.
- Make sure to sew the two pieces right on the angle so that when you open the piece the points are sharp and not cut.



-

- DIAGRAM 9

- Sew block 1 and 2 together sideways, as shown on diagram below.

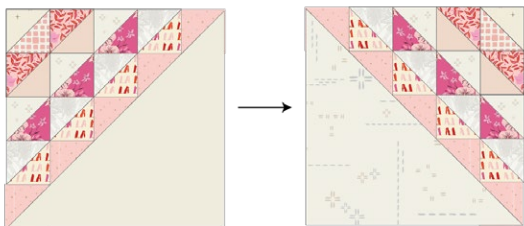


DIAGRAM 10

- Sew block 1 and 2 together sideways, as shown on diagram below.

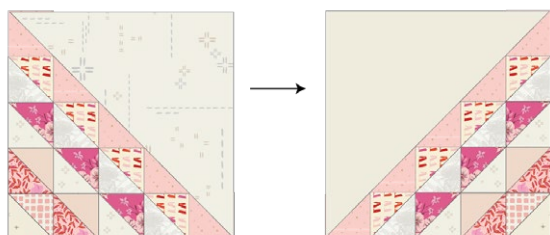
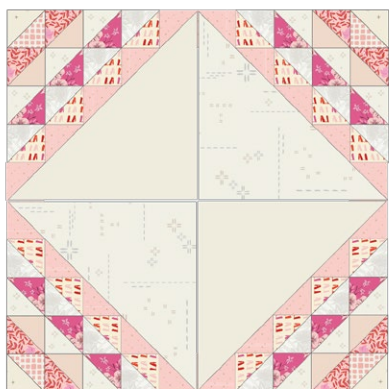


DIAGRAM 11

- Sew the two sets of blocks together.
- Repeat with the rest of the blocks until you have nine (9) pieces, as shown on diagram below.



= 9

DIAGRAM 12

- Sew (3) blocks together in a row, as shown on diagram below. Repeat this step two more times

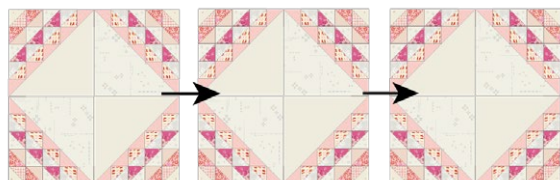


DIAGRAM 13

- Sew the 3 rows together, as shown on diagram below.

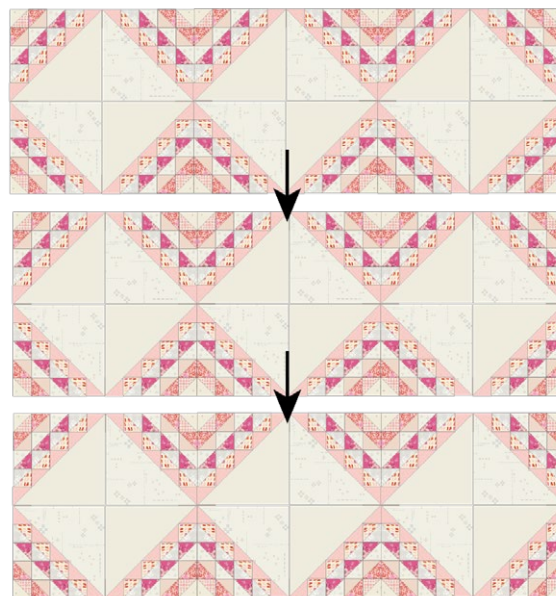


DIAGRAM 14

- Template 1 and 2 are optional
- Take template 2 from fabric L and using steam a seam place it in the middle of the center block.
- Take template 1 from fabric I and using steam a seam place them in the center of every remaining block.
- As shown on diagram below.



DIAGRAM 15

QUILT ASSEMBLY

Sew rights sides together.

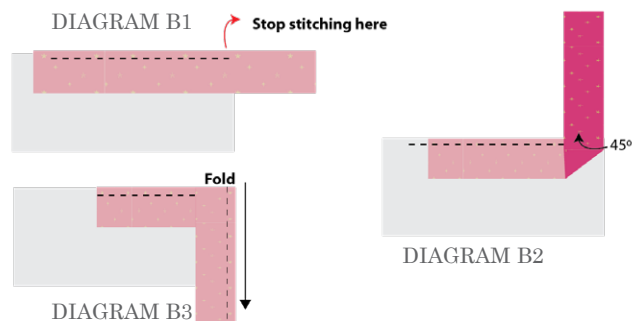
- Place BACKING FABRIC on a large surface wrong side up. Stretch it with masking tape against that surface.
- Place BATTING on top of backing fabric.
- Place TOP on top of the batting with right side facing up. Smooth away wrinkles using your hands.
- Pin all layers together and baste with basting thread, using long stitches. You can also use safety pins to join the layers.
- Machine or hand quilt starting at the center and working towards the corners. Remember that quilting motifs are a matter of personal preference. Have fun choosing yours!
- After you finished, trim excess of any fabric or batting, squaring the quilt to proceed to bind it.

- Stop stitching before you reach the last 5 or 6 inches. Cut the threads and remove the quilt from under the machine presser foot. Lay the loose ends of the binding flat along the quilt edge, folding the ends back on themselves where they meet. Press them together to form a crease. Using this crease as the stitching line, sew the two open ends of the binding with right sides together (you can help yourself marking with a pencil if the crease is difficult to see).
- Trim seam to $\frac{1}{4}$ " and press open. Complete the sewing. Turn binding to back of the quilt, turn raw edge inside and stitch by hand using blind stitch.

BINDING

Sew rights sides together.

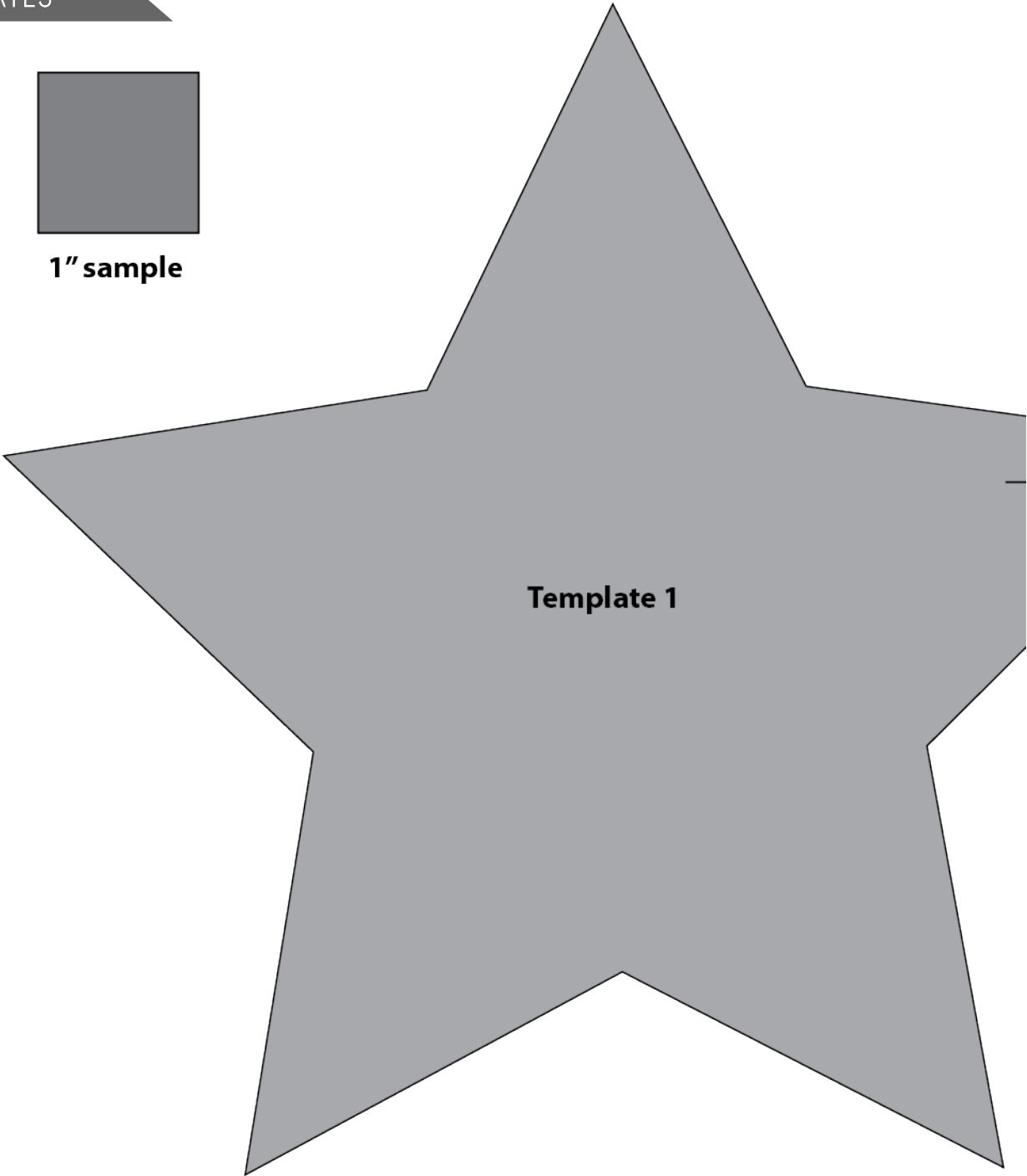
- Cut enough strips $1\frac{1}{2}$ " wide by the width of the fabric **N** to make a final strip 252 long. Start sewing the binding strip in the middle of one of the sides of the quilt, placing the strip right side down and leaving an approximated 5" tail. Sew with $\frac{1}{4}$ " seam allowance (using straight stitch), aligning the strip's raw edge with the quilt top's raw edge.
- Stop stitching $\frac{1}{4}$ " before the edge of the quilt (DIAGRAM B 1). Clip the threads. Remove the quilt from under the machine presser foot. Fold the strip in a motion of 45° and upward, pressing with your fingers (DIAGRAM B2). Hold this fold with your finger, bring the strip down in line with the next edge, making a horizontal fold that aligns with the top edge of the quilt (DIAGRAM B3). Start sewing at $\frac{1}{4}$ " of the border, stitching all the layers. Do the same in the four corners of the quilt.



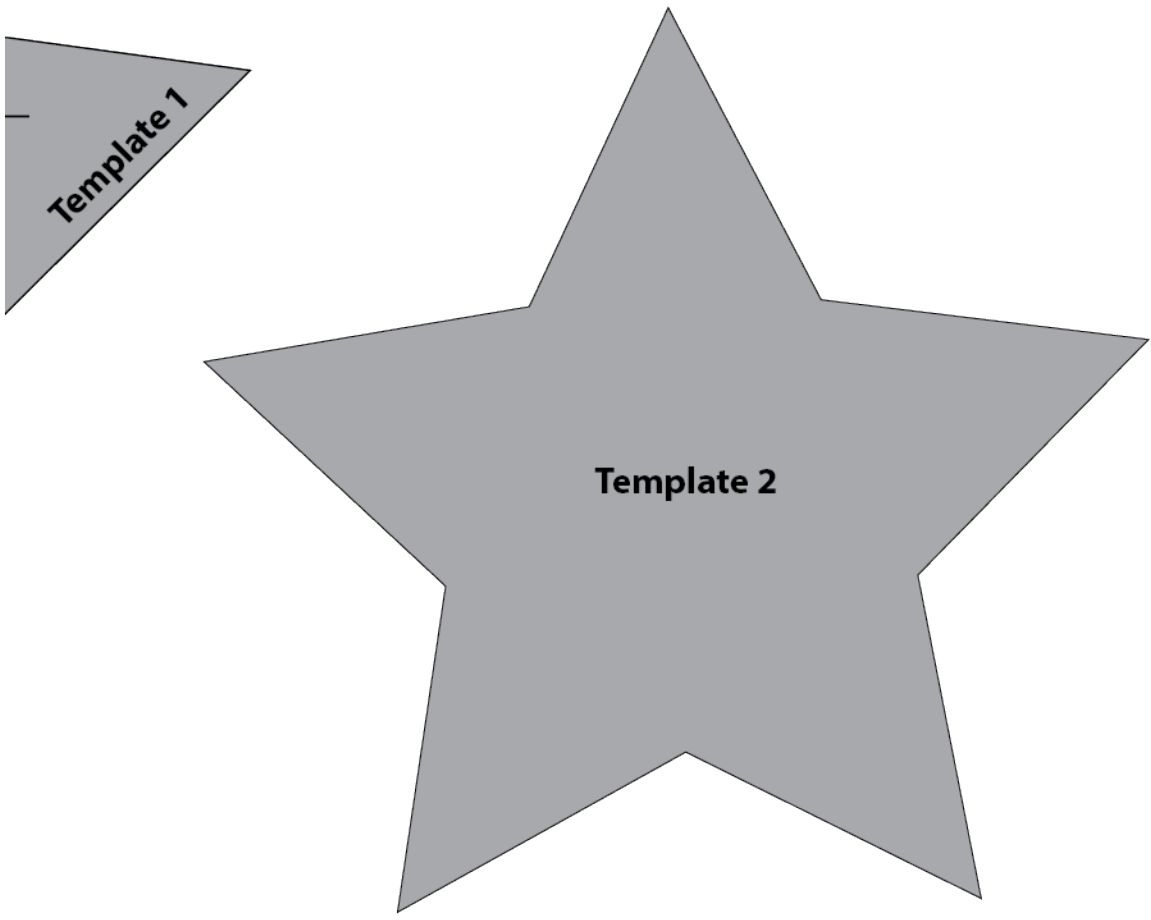
TEMPLATES



1" sample



Template 1



XXXXXXXXXXXXXXXXXXXXXXXXXXXXXXXXXXXX

*Congratulations
& enjoy*

XXXXXXXXXXXXXXXXXXXXXXXXXXXXXXXXXXXX



artgalleryfabrics.com

NOTE: While all possible care has been taken to ensure the accuracy of this pattern, We are not responsible for printing errors or the way in which individual work varies.

Please read instructions carefully before starting the construction of this quilt. If desired, wash and iron your fabrics before starting to cut.

© 2022 Courtesy of Art Gallery Quilts LLC. All Rights Reserved.