

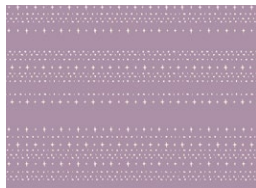




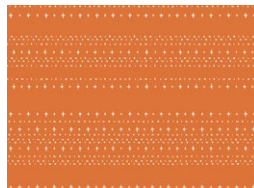
DESIGNED BY AGFstudio



FABRICS DESIGNED BY AGF STUDIO



SNS-13010
STARS ALIGNED TREAT



SNS13001
STARS ALIGNED TRICK

ADDITIONAL BLENDERS FOR THIS PROJECT



PE439
RASPBERRY ROSE



PE499
DEEP BLACK



PE433
SNOW





FINISHED SIZE | 13" x 12"

FABRIC REQUIREMENTS

Fabric A	PE439	½ yd.
Fabric B	PE499	½ yd.
Fabric C	PE433	FQ.
Fabric D	SNS13010	½ yd.
Fabric E	SNS13001	½ yd.

ADDITIONAL MATERIALS

- Double sided fusible Interfacing.
- Batting.
- Embroidery Thread.

CUTTING DIRECTIONS

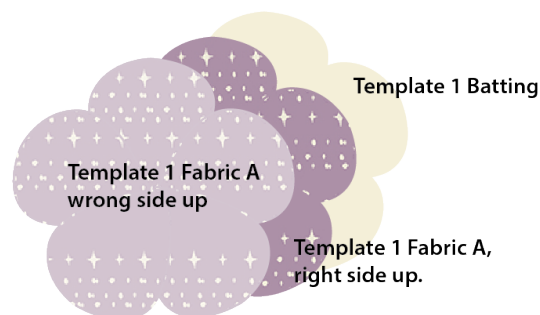
*¼" seam allowances are included.
WOF means width of the fabric.*

- Two (2) Template 1 of fabric **A**.
- Two (2) Template 1 of fabric **B**.
- Two (2) Template 1 of fabric **D**.
- Two (2) Template 1 of fabric **E**.
- Four (4) Template 2 of fabric **C**.
- Four (4) Template 3 of fabric **B**.
- Four (4) Template 4 of fabric **B**.
- Four (4) Template 5 of fabric **B**.

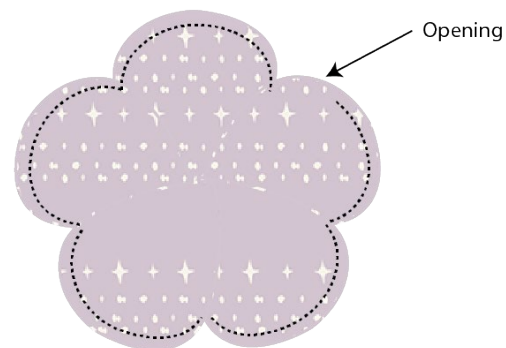
CONSTRUCTION

Sew all rights sides together with ¼" seam allowance.

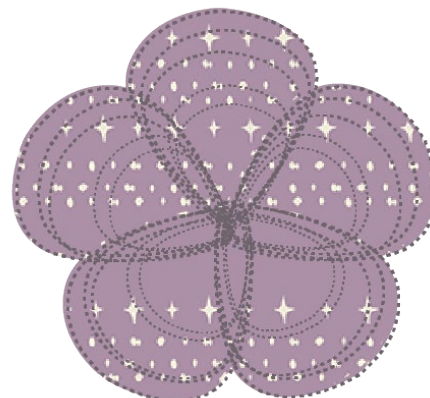
- Begin by layering template 1 from fabric **A** wrong side up over template 1 of fabric **A**, right side up and those two over template 1 Batting.



- Sew around the 3 layers leaving a space open to turn your skully placemat inside out.

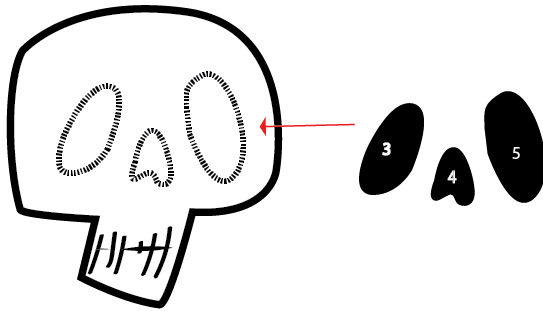


- To close the opening, top stitch around the Scully placemat about ⅛" away from the edge.
- Quilt the placemat using your favorite quilting style by hand or machine.

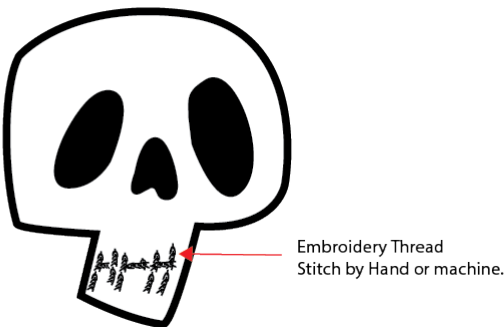


APPLIQUE

- Begin by using double sided fusible interfacing on templates 3,4 and 5 from fabric **B** and iron them on template 2 from fabric **C** following the marks for accuracy.
- Stitch around using your favorite decorative stitch to give the eyes a little more texture.



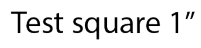
- Using embroidery thread, follow the line marks of the skull's mouth to create the expression.



- Lastly, using double sided interfacing place your skull from fabric **C** and center it on the flower.
- Top stitch around it by using zig-zag stitch to give it a more spookie look.
- Repeat the same steps for the other Skully Placemats.



- You are done, Enjoy!



A

plate 1

Slipkier Flower Mats

B

11

T4

T5

C

T2

XXXXXXXXXXXXXXXXXXXXXXXXXXXXXXXXXXXX

*Congratulations
& enjoy*

XXXXXXXXXXXXXXXXXXXXXXXXXXXXXXXXXXXX



artgalleryfabrics.com

NOTE: While all possible care has been taken to ensure the accuracy of this pattern, We are not responsible for printing errors or the way in which individual work varies.

Please read instructions carefully before starting the construction of this quilt. If desired, wash and iron your fabrics before starting to cut.

© 2022 Courtesy of Art Gallery Quilts LLC. All Rights Reserved.