





# Flower Bound

QUILT DESIGNED BY *AGFstudio*

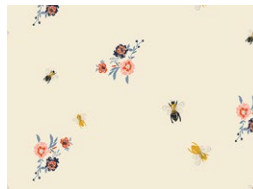


## the *Season* of **TRIBUTE**

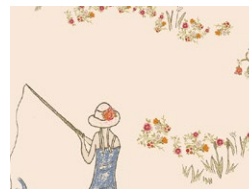
chapter two	TITLE <i>Garden of Opulence</i>	DESIGNER <b>BARI J.</b>
-------------	---------------------------------	-------------------------



**TRB2000**  
BOTANIST'S ESSAY TWO



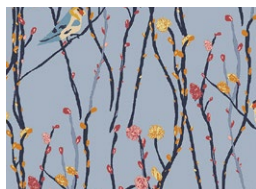
**TRB2001**  
BEES & BITS TWO



**TRB2007**  
FAWN DAY TWO



**TRB2011**  
GARDEN ROCKET TWO



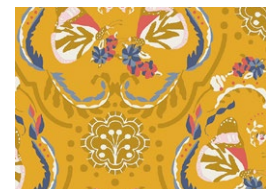
**TRB2004**  
ILLUSIONIST VINE TWO



**TRB2005**  
FLOWERPOP TWO



**TRB2009**  
PANACHE PROFUNDO TWO



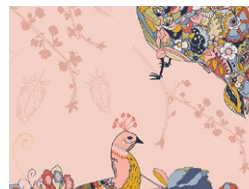
**TRB2003**  
PAINTED LADIES TWO



**TRB2006**  
RIPPLES TWO



**TRB2010**  
FRENCH SAMPLER TWO



**TRB2002**  
PEACOCK WALTZ TWO





# Flower Bound

FINISHED SIZE | 60" x 69"

## FABRIC REQUIREMENTS

Fabric <b>A</b>	TRB2000	$\frac{3}{8}$ yd.
Fabric <b>B</b>	TRB2001	$\frac{1}{2}$ yd.
Fabric <b>C</b>	TRB2007	$\frac{3}{8}$ yd.
Fabric <b>D</b>	TRB2011	$\frac{3}{8}$ yd.
Fabric <b>E</b>	TRB2004	$\frac{3}{4}$ yd.
Fabric <b>F</b>	TRB2005	$\frac{3}{8}$ yd.
Fabric <b>G</b>	TRB2009	$\frac{3}{8}$ yd.
Fabric <b>H</b>	FE502	$\frac{1}{4}$ yd.
Fabric <b>I</b>	TRB2003	$\frac{3}{8}$ yd.
Fabric <b>J</b>	TRB2006	$\frac{3}{8}$ yd.
Fabric <b>K</b>	TRB2010	$\frac{1}{2}$ yd.
Fabric <b>L</b>	TRB2002	$\frac{3}{8}$ yd.
Fabric <b>M</b>	PE421	$2\frac{1}{2}$ yd.

### BACKING FABRIC

TRB2001 4  $\frac{1}{2}$  yds (*Suggested*)

### BINDING FABRIC

Fabric **E** TRB2000 (*Included*)

## CUTTING DIRECTIONS

*$\frac{1}{4}$ " seam allowances are included.*

*WOF means width of fabric.*

- Nine (9)  $5\frac{1}{4}$ " squares from fabric **A**.
- Four (4)  $4\frac{7}{8}$ " squares from fabric **A**.
- Thirteen (13)  $5\frac{1}{4}$ " squares from fabric **B**.
- Six (6)  $4\frac{7}{8}$ " squares from fabric **B**.
- Nine (9)  $5\frac{1}{4}$ " squares from fabric **C**.
- Four (4)  $4\frac{7}{8}$ " squares from fabric **C**.
- Ten (10)  $5\frac{1}{4}$ " squares from fabric **D**.
- Five (5)  $4\frac{7}{8}$ " squares from fabric **D**.
- Eight (8)  $5\frac{1}{4}$ " squares from fabric **E**.
- Four (4)  $4\frac{7}{8}$ " squares from fabric **E**.
- Seven (7)  $1\frac{1}{2}$ " x WOF strips from fabric **E** (binding).
- Nine (9)  $5\frac{1}{4}$ " squares from fabric **F**.
- Four (4)  $4\frac{7}{8}$ " squares from fabric **F**.
- Nine (9)  $5\frac{1}{4}$ " squares from fabric **G**.
- Five (5)  $4\frac{7}{8}$ " squares from fabric **G**.
- Four (4)  $5\frac{1}{4}$ " squares from fabric **H**.
- Three (3)  $4\frac{7}{8}$ " squares from fabric **H**.
- Eight (8)  $5\frac{1}{4}$ " squares from fabric **I**.
- Four (4)  $4\frac{7}{8}$ " squares from fabric **I**.
- Eight (8)  $5\frac{1}{4}$ " squares from fabric **J**.
- Four (4)  $4\frac{7}{8}$ " squares from fabric **J**.
- Twelve (12)  $5\frac{1}{4}$ " squares from fabric **K**.
- Five (5)  $4\frac{7}{8}$ " squares from fabric **K**.
- Eleven (11)  $5\frac{1}{4}$ " squares from fabric **L**.
- Five (5)  $4\frac{7}{8}$ " squares from fabric **L**.
- Twenty five (25)  $5\frac{1}{4}$ " squares from fabric **M**.
- Fifty three (53)  $4\frac{7}{8}$ " squares from fabric **M**.
- Twelve (12) 2" x WOF strips from fabric **M**.

# CONSTRUCTION

*Sew all rights sides together with 1/4" seam allowance.*

## Half Square Triangle Method

- Take two (2) 4 7/8" squares .
- Draw a line diagonally from corner to corner using a mechanical pencil or frixion pen.
- Stitch 1/4" on each side from the drawn lines.
- Cut the pieces apart along the marked diagonal line.
- Press seams open and trim to a 4 1/2" perfect square.

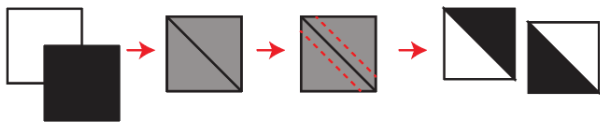


DIAGRAM 1

- Following the half square triangle instruction, follow the diagram below in order to create your blocks.

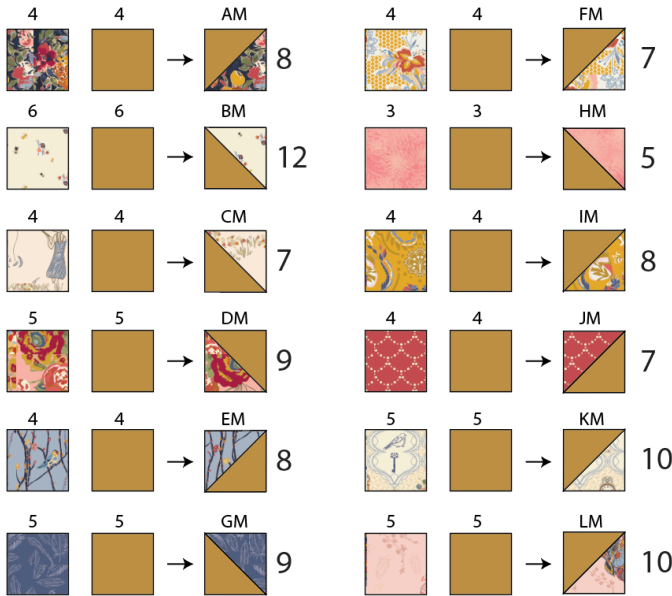


DIAGRAM 2

## Quarter Square Triangle Construction

- Take one (1) 5 1/4" square and cut on the diagonal.

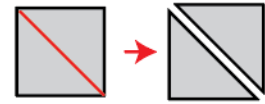


DIAGRAM 3

- Take two (2) 5 1/4" squares and cut them on both diagonals creating four (4) triangles.



DIAGRAM 4

- Take one triangle from each and one half square triangle and join them following the diagram below.
- Trim to 4 1/2" x 4 1/2".

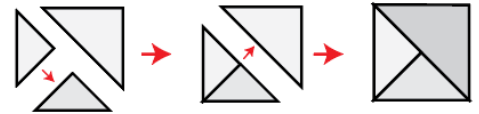


DIAGRAM 5

- Following the quarter square triangle instruction, follow the diagram below in order to create your blocks.
- You will have leftover triangles in which you will be able to use to complete other blocks.

