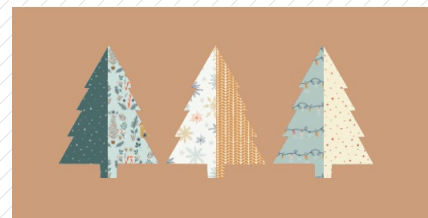


A brown rectangular pillow with three stylized Christmas trees. The left tree is dark green with white snowflakes and a light blue patterned side. The middle tree is white with orange and blue patterns. The right tree is light blue with white snowflakes and a yellow patterned side.

Eve Pillow

DESIGNED BY AGFstudio



FABRICS DESIGNED BY MAUREEN CRACKNELL



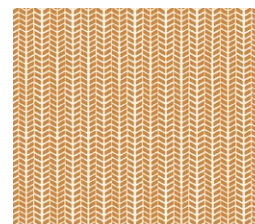
CJO-12592
SNOWING NIGHT



CJO-12583
GINGER JOY



CJO-12591
MAKE SNOW FLURRIES



CJO-12586
HERRINGBONE GOLD



CJO-12585
NORTHERN LIGHTS



CJO-12582
SNOWING BRIGHT

ADDITIONAL BLENDERS FOR THIS PROJECT



PE-458
TOASTY WALNUT



FEEL THE DIFFERENCE

Eve Pillow

FINISHED SIZE | 24" x 12½"

FABRIC REQUIREMENTS

Fabric A	CJO-12592	Fat 8.
Fabric B	CJO-12583	Fat 8.
Fabric C	CJO-12591	Fat 8.
Fabric D	CJO-12586	Fat 8.
Fabric E	CJO-12585	Fat 8.
Fabric F	CJO-12582	Fat 8.
Fabric G	PE-458	¾ yd.

BACKING FABRIC
DEN-S-2006 (Included)

CUTTING DIRECTIONS

¼" seam allowances are included.
WOF means width of fabric.

- One (1) 6½" x 12½" rectangle from fabric **A**
- One (1) 3½" x 12½" rectangle from fabric **B**
- One (1) 3½" x 12½" rectangle from fabric **C**
- One (1) 3½" x 12½" rectangle from fabric **D**
- One (1) 3½" x 12½" rectangle from fabric **E**
- One (1) 6½" x 12½" rectangle from fabric **F**
- One (1) 24½" x 12½" rectangle from fabric **G**
- Two (2) 16" x 12½" rectangles from fabric **G** (backing)

CONSTRUCTION

Sew all rights sides together with ¼" seam allowance.

- Join fabrics **A-F** following the diagram below.

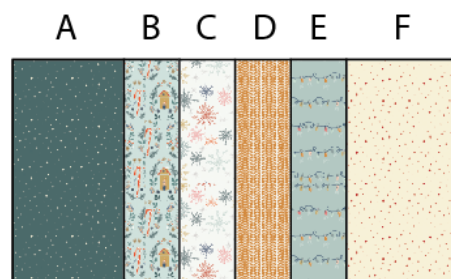


DIAGRAM 1

- Take one 24½" x 12½" rectangle from fabric **G** and measure 2½" from the top down, 3½" from the left edge in, place your tree template, using a water soluble pen.

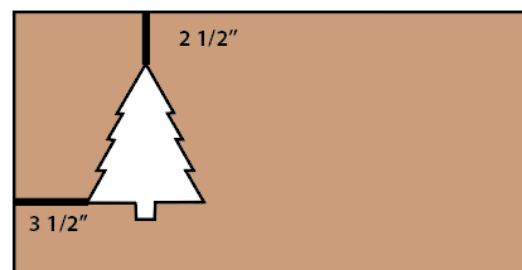


DIAGRAM 2

- Trace the template again, this time ½" from the first traced tree, following the diagram below.

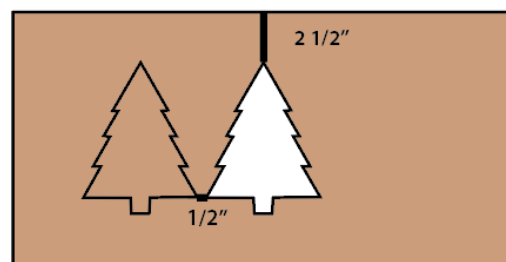


DIAGRAM 3

- Trace the next template again $\frac{1}{2}$ " from the second traced tree, following the diagram below.

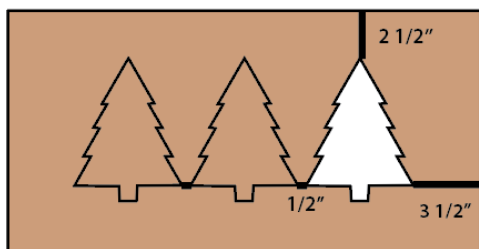


DIAGRAM 4

- Take the **AF** assembled piece, right side facing up, and place it on the wrong side of the $24\frac{1}{2}$ " x $12\frac{1}{2}$ " rectangle from fabric **G**.
- Place batting on the wrong side of the **A-F** unit, creating a three layered piece.
- Pin in place.
- Sew along the traced lines with desired color thread.
- To finish the reverse applique pillow, take a small scissor and cut inside the tree outline at a $\frac{1}{8}$ " distance from your stitching to reveal the fabric underneath.

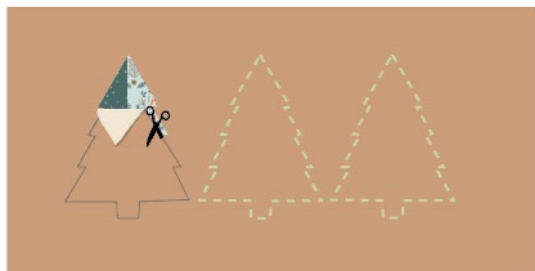


DIAGRAM 5

- Continue cutting until you reveal all three Christmas tree.
- Enjoy!

CREATING THE BACK PILLOW

Sew all rights sides together with $\frac{1}{4}$ " seam allowance. Press open.

- Take both 16 " x $12\frac{1}{2}$ " rectangles from fabric **G**.
- Fold the right edge $\frac{1}{2}$ " towards the wrong side of the fabric of one of the rectangle.
- Fold the same edge $\frac{1}{2}$ " again and edge stitch the fold in place to have a clean edge.
- Repeat the same but this time for the left edge of the other piece.
- Take the quilted pillow top and lay it flat right side up.
- Take one rectangle from fabric **G** and align it wrong side up to the right side of the pillow top.
- Take the other rectangle from fabric **G** and align it wrong side up to the left side of the pillow top.
- Pin the three pieces in place and sew around the edges at $\frac{1}{4}$ ".
- Clip the corners and flip the piece to the right side of the fabric.
- Fill the pillow with a 24 " x 12 " pillow form and enjoy!

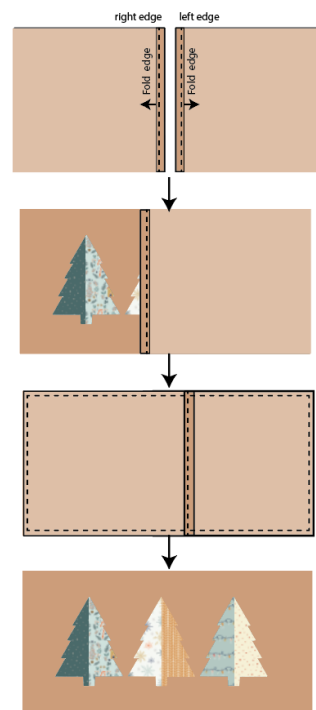


DIAGRAM 6

XXXXXXXXXXXXXXXXXXXXXXXXXXXXXXXXXXXX

*Congratulations
& enjoy*

XXXXXXXXXXXXXXXXXXXXXXXXXXXXXXXXXXXX

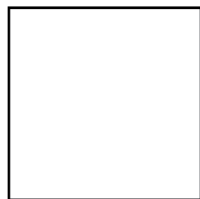


artgalleryfabrics.com

NOTE: While all possible care has been taken to ensure the accuracy of this pattern, We are not responsible for printing errors or the way in which individual work varies.

Please read instructions carefully before starting the construction of this quilt. If desired, wash and iron your fabrics before starting to cut.

© 2022 Courtesy of Art Gallery Quilts LLC. All Rights Reserved.



1" Square

