





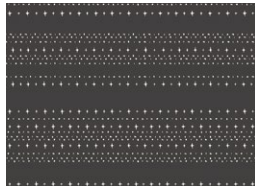
# BELA'S WEB BLOCK

DESIGNED BY AGFstudio



## Sweet 'n Spookier

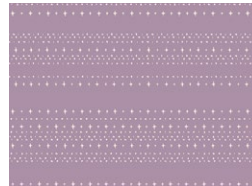
FABRICS DESIGNED BY AGF STUDIO



SNS13036  
STARS ALIGNED SPOOKY



SNS13033  
BATTY HANGOUT



SNS-13010  
STARS ALIGNED TREAT



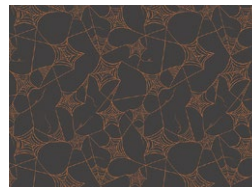
SNS13040  
FANGTASTIC LIPS



SNS13031  
WICKED BLOOMS



SNS13032  
WINGING IT MIDNIGHT



SNS13030  
WEB OF SCARES CARAMEL



SNS13034  
MISTER NO BODY BLAZE



# BELA'S WEB BLOCK

FINISHED SIZE | 12" x 12"

## FABRIC REQUIREMENTS

### Block 1

Fabric **A** SNS13036 FQ.

Fabric **B** SNS13033 FQ.

### Block 2

Fabric **A** SNS13010 FQ.

Fabric **B** SNS13040 FQ.

### Block 3

Fabric **A** SNS13031 FQ.

Fabric **B** SNS13032 FQ.

### Block 4

Fabric **A** SNS13030 FQ.

Fabric **B** SNS13034 FQ.

## CUTTING DIRECTIONS

*1/4" seam allowances are included.  
WOF means width of fabric.*

- One (1) 12½" square from fabric **A**.
- One (1) 12½" square from fabric **B**.

## CONSTRUCTION

*Sew all right sides together with 1/4" seam allowance.*

- Place one (1) 12½" square from fabric **A** on top of one (1) 12½" square from fabric **B**, right sides facing up.
- Place batting fabric on the wrong side of fabric **B**, creating three layers. Pin your pieces.

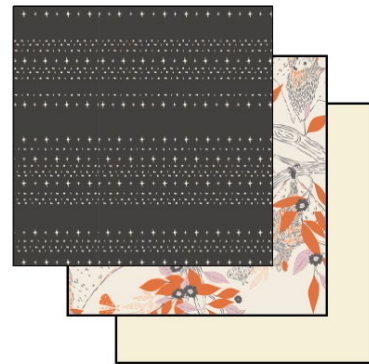


DIAGRAM 1

- Take the spider web template and place it on top of your block, make sure its centered.
- Pin all around and change the setting to your machine to a smaller length. This will help to remove the paper once you sew your spider web and will avoid your fabric to fray.
- Stitch on the dotted lines, in order to trace your spider web.

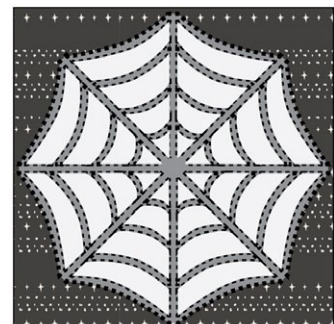


DIAGRAM 2

- Carefully remove the paper template.
- Once you have sewn and removed the paper, take a small pair of scissors and carefully start cutting fabric **A** at about  $\frac{1}{8}$ " distance from the stitched lines.
- Be careful on not to cut fabric **B**.



DIAGRAM 3

- And voila! You have yourself your block.
- Repeat the same instructions for the other blocks.



DIAGRAM 4

XXXXXXXXXXXXXXXXXXXXXXXXXXXXXXXXXXXX

*Congratulations  
& enjoy*

XXXXXXXXXXXXXXXXXXXXXXXXXXXXXXXXXXXX



[artgalleryfabrics.com](http://artgalleryfabrics.com)

NOTE: While all possible care has been taken to ensure the accuracy of this pattern, We are not responsible for printing errors or the way in which individual work varies.

Please read instructions carefully before starting the construction of this quilt. If desired, wash and iron your fabrics before starting to cut.

© 2022 Courtesy of Art Gallery Quilts LLC. All Rights Reserved.

1" Square

