

Alamo Tote



capsules
by AGF

FREE PATTERN

XXXXXXXXXXXXXXXXXXXXXXXXXXXX

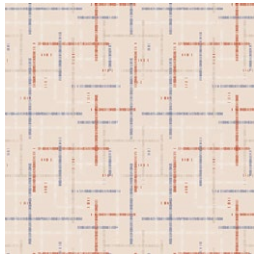
Alamo Tote

TOTE DESIGNED BY AGF STUDIO AGFstudio



ALIGNED

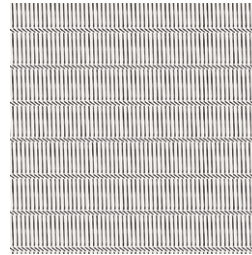
FABRICS DESIGNED BY AGF STUDIO



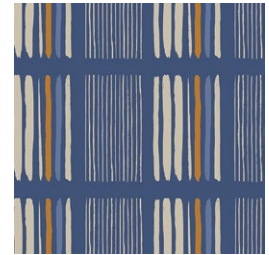
CAP-A-7000
INTERCONNECTED



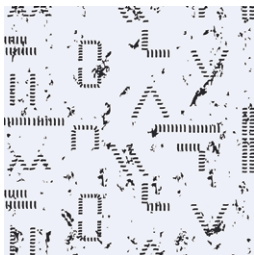
CAP-A-7001
SLANTED



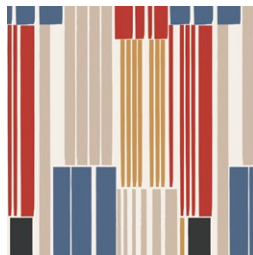
CAP-A-7002
HYPHENATED



CAP-A-7003
LINEUP



CAP-A-7004
DIVIDED



CAP-A-7005
ON LINES



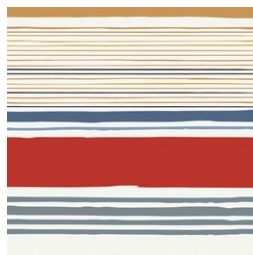
CAP-A-7006
PARALLEL



CAP-A-7007
LINKED



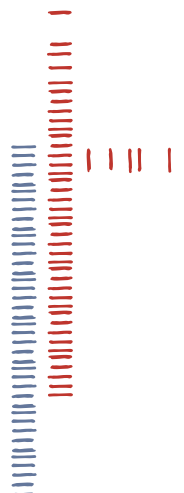
CAP-A-7008
DASH-ING

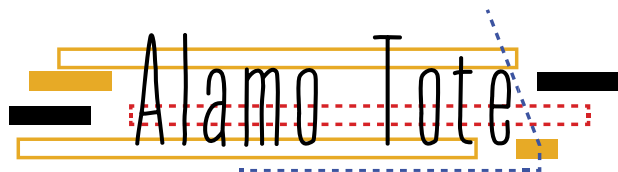


CAP-A-7009
LINE STUDY



FEEL THE DIFFERENCE © 2017 Courtesy of Art Gallery Quilts LLC. All Rights Reserved.





FINISHED SIZE | 19" x 15"

FABRIC REQUIREMENTS

Fabric A	CAP-A-7004	$\frac{3}{8}$ yd.
Fabric B	CAP-A-7006	F8.
Fabric C	PE-408	FQ.
Fabric D	PE-413	1 yd.
Fabric E	PE-459	$\frac{7}{8}$ yd.

Lining FABRIC
CAP-A-7004 $\frac{1}{2}$ yd. (Suggested)

CUTTING DIRECTIONS

$\frac{1}{4}$ " seam allowances are included.
WOF means width of the fabric.

Fabric A:

- Two (2) $3\frac{1}{2}$ " x $11\frac{1}{2}$ " strips.
- Two (2) $6\frac{1}{2}$ " squares.
- Six (6) $6\frac{1}{2}$ " x $4\frac{1}{2}$ " rectangles.
- Two (2) template 1 (lining).

Fabric B:

- Two (2) $2\frac{1}{2}$ " x $13\frac{1}{2}$ " strips.
- Two (2) $2\frac{1}{2}$ " x $11\frac{1}{2}$ " strips.
- Two (2) $3\frac{1}{2}$ " x $4\frac{1}{2}$ " strips.

Fabric C:

- Four (2) $4\frac{1}{2}$ " squares.
- One (1) $4\frac{7}{8}$ " square.
- Two (2) 2 x $19\frac{1}{2}$ " strips.

Fabric D:

- Two (2) 2 x $19\frac{1}{2}$ " strips.
- Two (2) $8\frac{1}{2}$ x $3\frac{1}{2}$ " rectangles.
- Four (4) $3\frac{1}{2}$ x $4\frac{1}{2}$ " rectangles.
- Two (2) $4\frac{1}{2}$ " squares.

- One (1) $4\frac{7}{8}$ " square.
- Two (2) 3 " x WOF strips for handles.

Fabric E:

- Two (2) $2\frac{1}{2}$ " $8\frac{1}{2}$ " strips.
- Two (2) $4\frac{1}{2}$ " squares.
- Two (2) $3\frac{1}{2}$ " x $4\frac{1}{2}$ " strips.
- One (1) $9\frac{1}{2}$ " x $5\frac{1}{2}$ " rectangle. (drop in pocket)

CONSTRUCTION

Sew all rights sides together with $\frac{1}{4}$ " seam allowance.

- You will create different fabric combinations using the Half Square Triangle (HST) technique.
- Use one (1) $4\frac{7}{8}$ " squares from fabrics C and D.
- Place them face to face.
- Draw a diagonal line on from corner to corner.

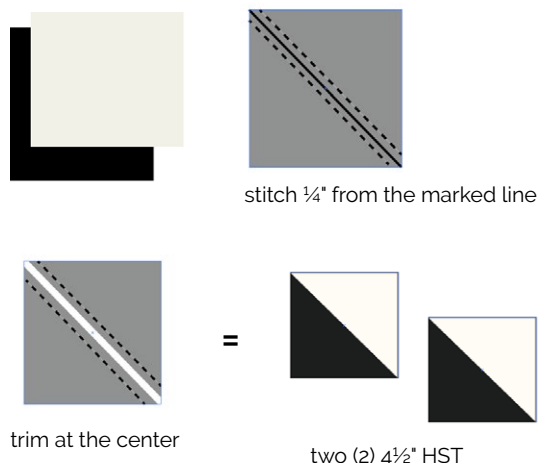


DIAGRAM 1

- To create the next fabric combinations use the diagram below for proper fabric placement and attachment.

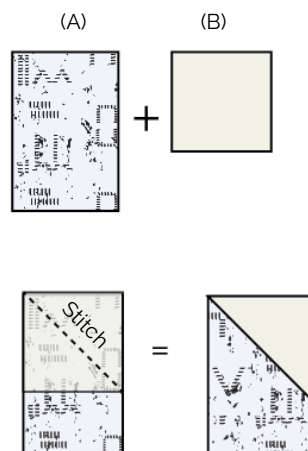


DIAGRAM 2

- Two (2) 4½" x 6½" rectangles from fabric **A** and two (2) 4½" square from fabric **C**.

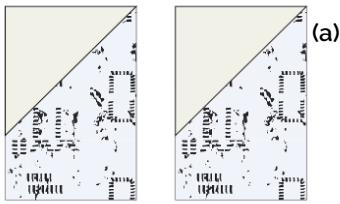


DIAGRAM 3

- Two (2) $4\frac{1}{2}$ " x $6\frac{1}{2}$ " rectangles from fabric **A** and two (2) $4\frac{1}{2}$ " squares from fabric **D**.

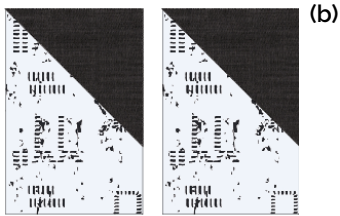


DIAGRAM 4

- Two (2) 6½" squares from fabric **A** and two (2) 3½" squares from fabric **D**.

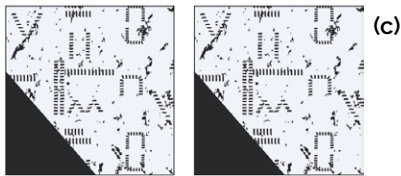


DIAGRAM 5

- Two (2) $3\frac{1}{2}$ " x $8\frac{1}{2}$ " rectangles from fabric **D** and two (2) $3\frac{1}{2}$ " squares from fabric **E**.



DIAGRAM 6

- Once you are done with all the fabric combinations, you will create blocks.
- Don't stress! Refer to the last page for proper fabric placement and attachment.
- Your fabric block should be approximately 18" x 19".
- Use template **1** pattern (find template in the last part of this instructions) to properly cut the shape of your oversized tote bag.
- You will repeat the same block assembly for both sides of the bag.

- Quilt as desired. We added diagonal lines with white thread to add a little of contrast. But as always you can get creative with stitch and color combinations when quilting!
- You should have two pieces looking like this:

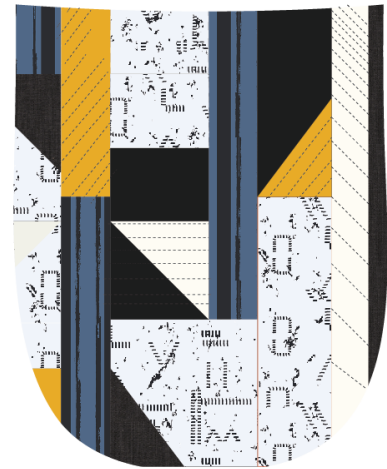


DIAGRAM 7

LINING & DROP IN POCKET

Sew rights sides together.

- Use (2) two template **1** pieces from fabric **A** and one $9\frac{1}{2}'' \times 5\frac{1}{2}''$ rectangle from fabric **E**.

Drop in pocket:

- Take tone (1) $9\frac{1}{2}$ " x $5\frac{1}{2}$ " rectangle from fabric **E** and place it on top of one piece of the lining fabric.
- Take the edges of fabric **E** and fold them in and stitch right on the edge leaving the top part unsewn.
- Stitch on the middle or more to your right or left in order to create your drop-in pockets.
- If you want, create a contrasting color binding detail on the top part of your pocket.
- If you desire, create a quilting motif on the pocket.
- Refer to the diagram below to see how the inside should look.

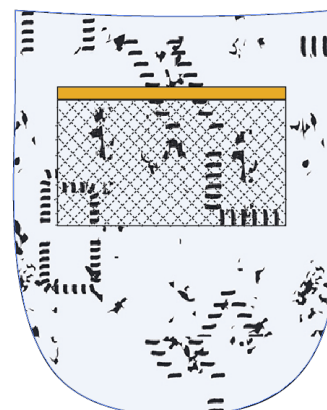


DIAGRAM 8

Handles

- Use one (1) 3" x WOF strip from fabric D.
- Fold the strip in half and trim to 20 - 21".
- Fold both long sides of your strip into the center of the strip and then fold in half. Press and top stitch both sides of your strap at ¼".

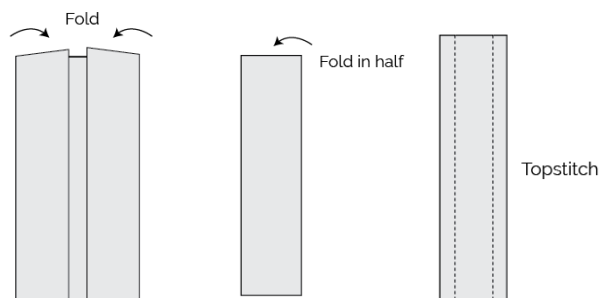


DIAGRAM 9

- Stitch handles ½" facing the right side of the bag.

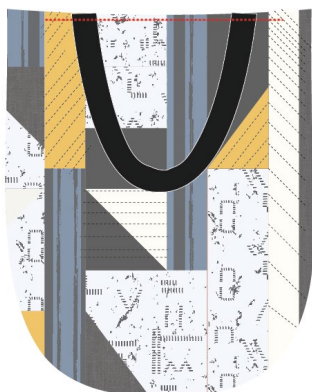


DIAGRAM 10

BAG ASSEMBLY

Sew rights sides together.

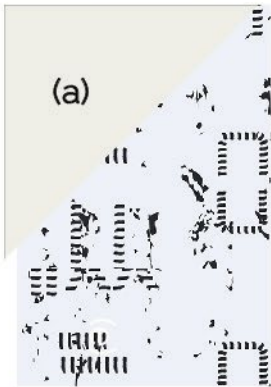
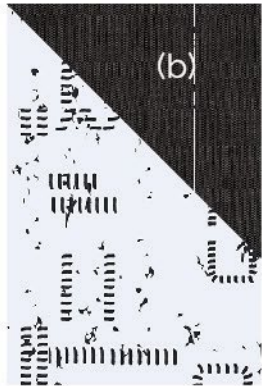
- Place bag body (exterior) inside lining, right sides together. Align side seams, Pin lining to exterior.
- Stitch lining to exterior all the way around top of back opening.
- Make sure to keep side seams aligned and seam allowances open as they are stitched.
- Press seam allowances open all the way around the top of the back.
- leave a 3" in hole in one of the sides of the lining. Flip you bag inside out.
- Turn the bag right side out through the hole and top stitch or hand stitch to assure a clean finish.
- Place the lining back inside the exterior, and press the lining/exterior attachment around the bag from the right side.
- You are finally done! Enjoy your new stylish bag!



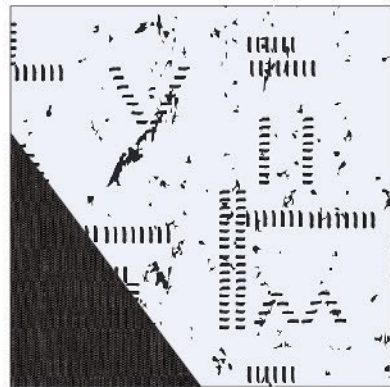
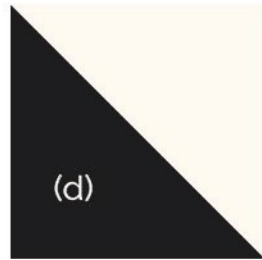
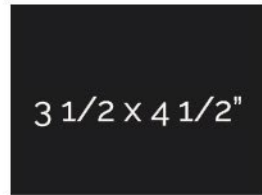
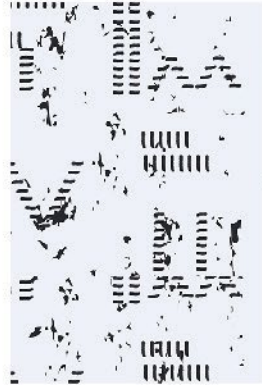
artgalleryfabrics.com

NOTE: While all possible care has been taken to ensure the accuracy of this pattern, We are not responsible for printing errors or the way in which individual work varies. Please read instructions carefully before starting the construction of this quilt. If desired, wash and iron your fabrics before starting to cut.

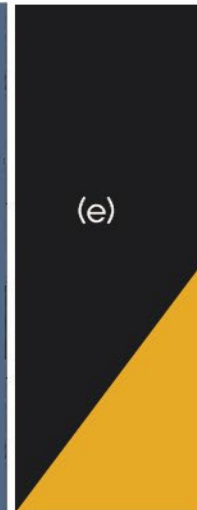
© 2017 Courtesy of Art Gallery Quilts LLC. All Rights Reserved.



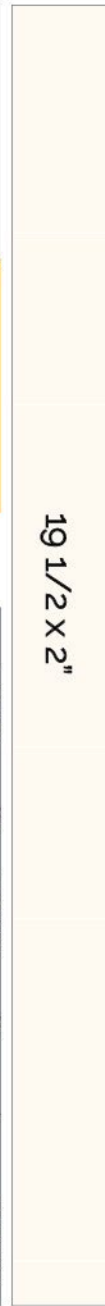
6 1/2 x 4 1/2"

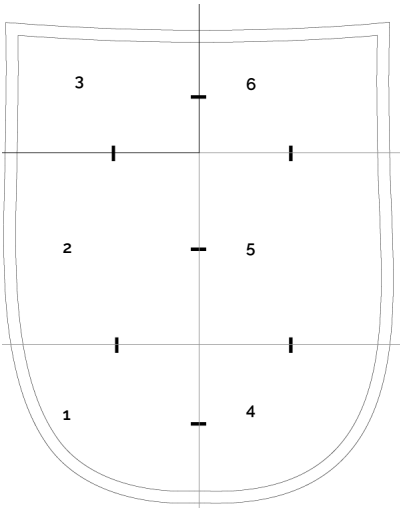


(c)



3 1/2 x 11 1/2"

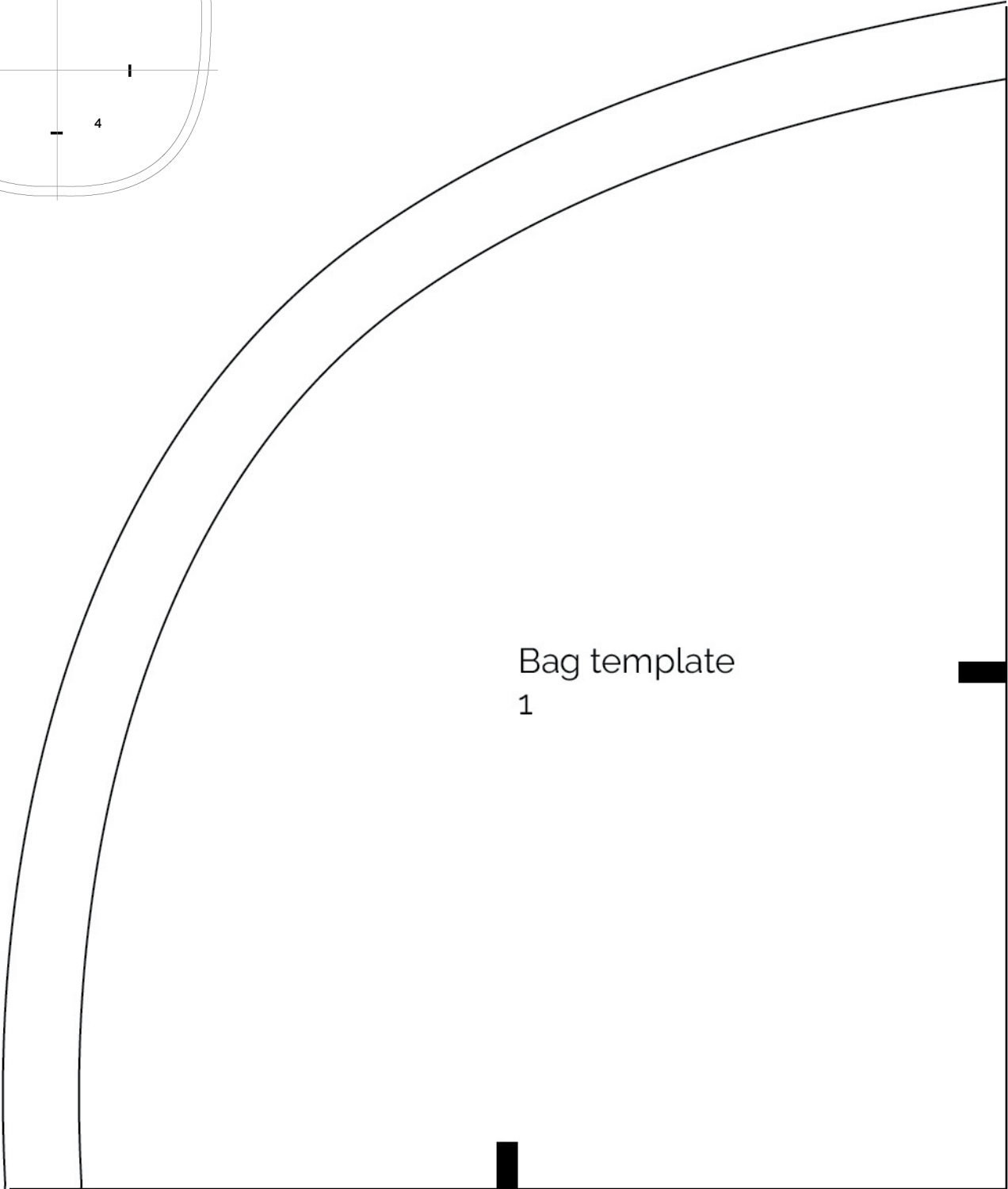


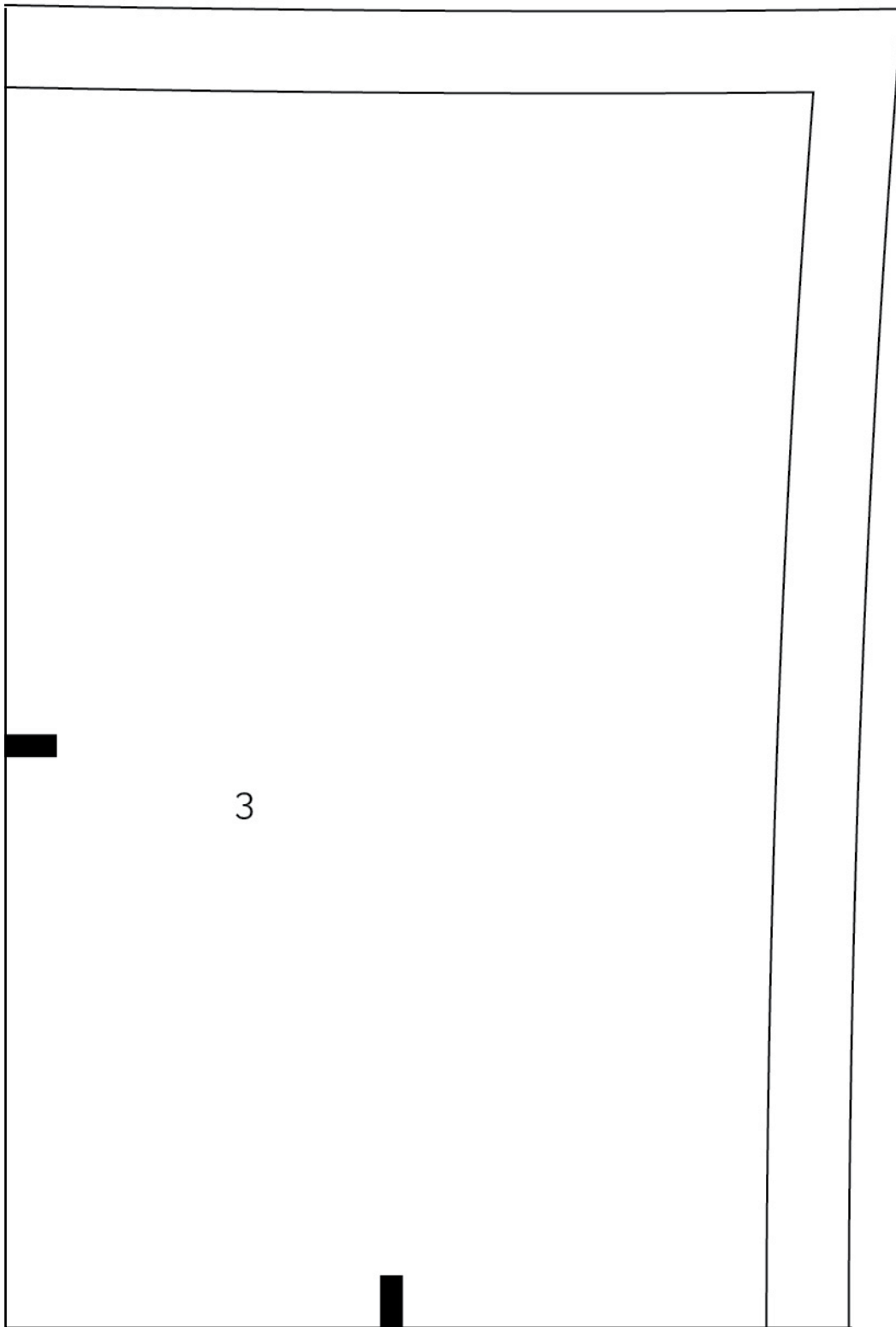


1" Test Square



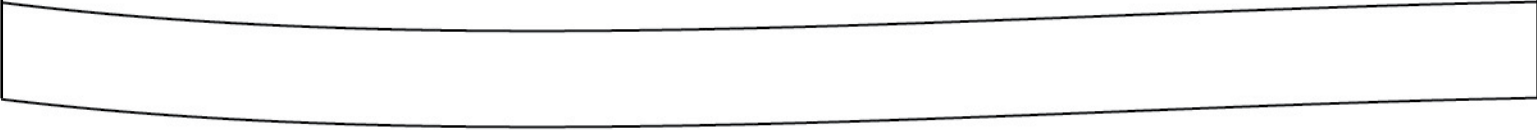
Bag template
1







5



7

11

2