

# HANA

garden bag



ANGLES

A DIVISION OF AGF

FREE PATTERN

XXXXXXXXXXXXXXXXXXXXXXXXXXXX



# HANA

## garden bag

DESIGNED BY PAT BRAVO



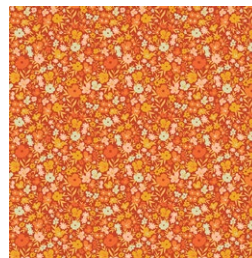
FABRICS DESIGNED BY ALEXANDRA BORDALLO



GRH14400  
DAHLIA'S GARDEN

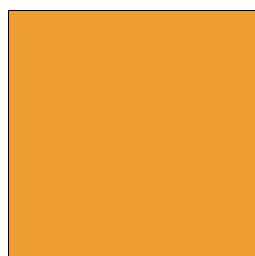


GRH14405  
GROW YOUR OWN



GRH14409  
FLOWERY MEADOWS BRIGHT

### ADDITIONAL BLENDERS FOR THIS PROJECT



PE-514  
SUMMER SUN



# HANA

## garden bag

FINISHED SIZE | 12"H×18"W×5"D

### FABRIC REQUIREMENTS

Fabric <b>A</b>	PE514	$\frac{5}{8}$ yd.
Fabric <b>B</b>	GRH14400	$\frac{3}{4}$ yd.
Fabric <b>C</b>	GRH14405	1 yd.
Fabric <b>D</b>	GRH14409	$\frac{3}{8}$ yd.

#### EXTRA MATERIALS:

Fusible interfacing  
Batting

### CUTTING DIRECTIONS

$\frac{1}{4}$ " seam allowances are included.  
WOF means width of the fabric.

- Two (2)  $18\frac{1}{2}$ " x  $12\frac{1}{2}$ " rectangles from fabric **A**.
- Two (2)  $12\frac{1}{2}$ " x  $5\frac{1}{2}$ " rectangles from fabric **A**.
- One (1)  $31\frac{1}{2}$ " x  $12\frac{1}{2}$ " rectangle from fabric **B**.
- One (1)  $18\frac{1}{2}$ " x  $12\frac{1}{2}$ " rectangles from fabric **B**.
- Two (2)  $12\frac{1}{2}$ " x  $5\frac{1}{2}$ " rectangles from fabric **B**.
- Two (2)  $12\frac{1}{2}$ " x  $5\frac{1}{2}$ " rectangles from fabric **C**.
- Three (3)  $18\frac{1}{2}$ " x  $12\frac{1}{2}$ " rectangles from fabric **C**.
- One (1)  $18\frac{1}{2}$ " x  $5\frac{1}{2}$ " rectangles from fabric **C**.
- One (1)  $18\frac{1}{2}$ " x  $5\frac{1}{2}$ " rectangles from fabric **D**.
- Two (2)  $13\frac{1}{2}$ " x  $5\frac{1}{2}$ " rectangles from fabric **D**.

### CONSTRUCTION

Sew all rights sides together with  $\frac{1}{4}$ " seam allowance.

#### EXTERIOR POCKETS INSTRUCTIONS:

- For the Exterior pockets you'll need the following pieces: two (2)  $18\frac{1}{2}$ " x  $12\frac{1}{2}$ " rectangles from fabric **A**, two (2)  $12\frac{1}{2}$ " x  $5\frac{1}{2}$ " rectangles from fabric **A**, one (1)  $31\frac{1}{2}$ " x  $12\frac{1}{2}$ " rectangle from fabric **B**, one (1)  $18\frac{1}{2}$ " x  $12\frac{1}{2}$ " rectangles from fabric **B** & two (2)  $12\frac{1}{2}$ " x  $5\frac{1}{2}$ " rectangles from fabric **B**.
- To start, take one (1)  $18\frac{1}{2}$ " x  $12\frac{1}{2}$ " rectangle from fabrics **A** & **B**, iron some fusible interfacing or batting to the wrong side of the fabrics.
- For the pocket, fold the rectangle from fabric **B** in half lengthwise (right side of fabric showing)
- Place the pocket piece on top of the rectangle from fabric **A** and align it as shown in the diagram below.
- Stitch it making two vertical lines 6" from each other, you can also stitch the edges together  $\frac{1}{8}$ " to hold the pocket in place.



DIAGRAM 1

- For the front pocket use one (1)  $18\frac{1}{2}$ " x  $12\frac{1}{2}$ " rectangle from fabric **A** and one (1)  $31\frac{1}{2}$ " x  $12\frac{1}{2}$ " rectangle from fabric **B** and add some fusible interfacing or batting to the  $31\frac{1}{2}$ " x  $12\frac{1}{2}$ " rectangle from fabric **B**.
- Fold the rectangle from fabric **B** in half lengthwise (right side of fabric showing) quilt if desired.



DIAGRAM 2

- Now, mark, fold and press towards the back on the markings shown in the diagram below, this will create the pockets shape.

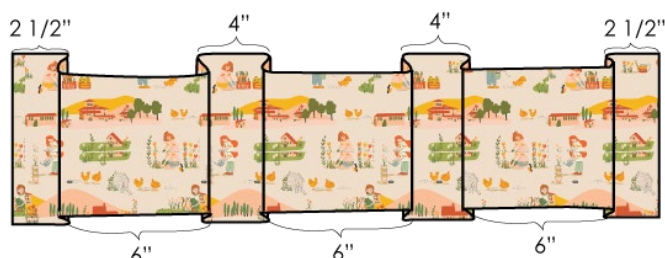


DIAGRAM 3

- Use a fabric marker to trace a vertical line in the center of the 4" spaces, this will mark where you will sew the pockets to the bag.
- Sew  $\frac{1}{8}$ " from the edge of all the pleats to create stability.



DIAGRAM 4

- Align the pocket piece at the bottom and center of the other  $18\frac{1}{2}$ " x  $12\frac{1}{2}$ " rectangle from fabric **A**.
- Sew it on, following the previous marks created, you can also sew the sides to hold the pocket in place.

- Set aside.



DIAGRAM 5

- For the side pockets use one (1)  $12\frac{1}{2}$ " x  $5\frac{1}{2}$ " rectangle from fabrics **A** & **B**, iron some fusible interfacing or batting to the wrong side of the fabrics.
- Fold the rectangle from fabric **B** in half lengthwise (right side of fabric showing) quilt if desired.
- For the side pockets use one (1)  $12\frac{1}{2}$ " x  $5\frac{1}{2}$ " rectangle from fabric **A** & **B**, iron some fusible interfacing or batting to the wrong side of the fabrics.
- Fold the rectangle from fabric **B** in half lengthwise (right side of fabric showing) quilt if desired.
- Place the pocket piece on top of the rectangle from fabric **A** and align it as shown in the diagram below.
- Stitch it on top sewing  $\frac{1}{8}$ " away from the side and bottom edges.
- Repeat the previous steps one more time using the remaining  $12\frac{1}{2}$ " x  $5\frac{1}{2}$ " rectangles from fabrics **A** & **B**.



DIAGRAM 6



## INTERIOR POCKET INSTRUCTIONS:

- For the exterior pockets you'll need the following pieces: two (2)  $18\frac{1}{2}$ " x  $12\frac{1}{2}$ " rectangles from fabric **C**.
- For the pocket fold one (1) of the rectangle from fabric **C** in half lengthwise (right side of fabric showing)
- Place the pocket piece on top of the other rectangle from fabric **C** and align it as shown in the diagram below.
- Stitch it making two vertical lines 6" from each other, you can also stitch the edges together  $\frac{1}{8}$ " to hold the pocket in place.

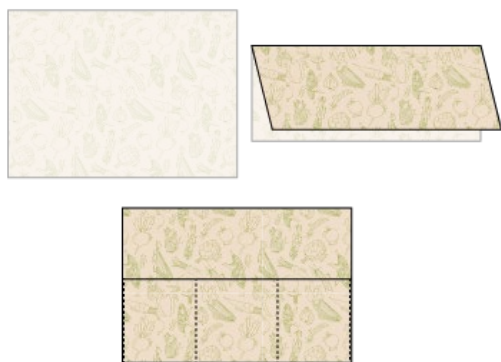


DIAGRAM 7

## BAG ASSEMBLY

### ASSEMBLING THE EXTERIOR BODY:

- For the exterior of the bag you'll need the following pieces: one (1)  $18\frac{1}{2}$ " x  $5\frac{1}{2}$ " rectangle from fabric **D**, two (2) exterior side pockets pieces.
- Attach the pieces together as shown in the diagram below, the  $18\frac{1}{2}$ " x  $5\frac{1}{2}$ " rectangle from fabric **D** should be in between the side pockets.



DIAGRAM 8

- Now bring your remaining two (2) exterior pieces (front & back) and the strip you just created for the base.
- Start pinning the base around the front exterior piece and sew it.
- Then take the back exterior piece and sew it to the other side of the base.
- Set aside.

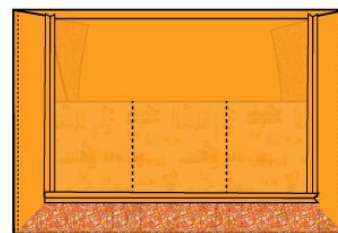
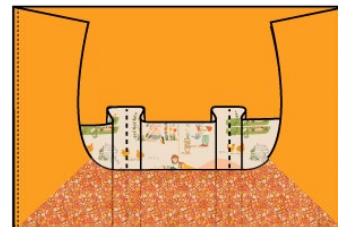


DIAGRAM 9

### ASSEMBLING THE INTERIOR BODY:

- For the interior of the bag you'll need all of your fabric **C** pieces: two (2)  $12\frac{1}{2}$ " x  $5\frac{1}{2}$ " rectangles from fabric **C**.
- Two (2)  $18\frac{1}{2}$ " x  $12\frac{1}{2}$ " rectangles from fabric **C**.
- One (1)  $18\frac{1}{2}$ " x  $5\frac{1}{2}$ " rectangle from fabric **C**.
- The interior construction is basically the same as the construction of the exterior piece but just one side has a pocket.
- Repeat the previous steps you made for the exterior pieces.

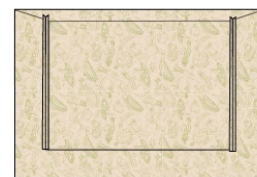


DIAGRAM 10

## HANDLES INSTRUCTIONS:

- Bring two (2)  $13\frac{1}{2}$ " x  $5\frac{1}{2}$ " rectangles from fabric **D**, iron some fusible interfacing or batting to the wrong side of the fabrics.
- Fold them half lengthwise face-to-face, sew the long edge to close them, then trim the excess fabric and turn it right side out.
- Press and top stitch  $\frac{1}{4}$ " away from the edges and quilt as desired.



DIAGRAM 11

## ASSEMBLING THE BAG TOGETHER

- Take the interior piece and put it inside of the exterior piece, then fold the edges  $\frac{1}{2}$ " inwards.

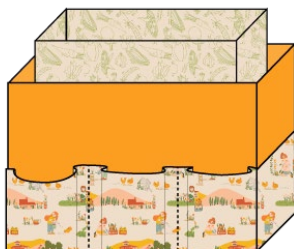


DIAGRAM 12

- Take both handles and place one on each of the long sides of the bag sandwiched in between the exterior fabric and lining, leaving a  $3\frac{1}{2}$ " space in the center, make sure they are aligned with each other and pin them in place.
- Pin all around the edge of the bag and then make a tight topstitch  $\frac{1}{4}$ " from the edge all around it.
- Voila!



DIAGRAM 13

XXXXXXXXXXXXXXXXXXXXXXXXXXXXXXXXXXXX

*Congratulations  
& enjoy*

XXXXXXXXXXXXXXXXXXXXXXXXXXXXXXXXXXXX



[artgalleryfabrics.com](http://artgalleryfabrics.com)

NOTE: While all possible care has been taken to ensure the accuracy of this pattern, We are not responsible for printing errors or the way in which individual work varies.

Please read instructions carefully before starting the construction of this quilt. If desired, wash and iron your fabrics before starting to cut.

© 2022 Courtesy of Art Gallery Quilts LLC. All Rights Reserved.