

Some of the projects featured in our lookbooks link back to patterns that were originally created in the past with different fabric selections. This project sheet will serve you as a quick reference to find and replace with the specific fabrics we used for this project. Happy sewing!

# All is Well

FABRICS DESIGNED BY AGF STUDIO



**BACKGROUND**  
ALW22406  
CONCENTRIC FIELDS



**WING OUTLINE 3**  
ALW22406  
CONCENTRIC FIELDS



**SAWTOOTH 1**  
ALW22400  
FIELDS OF MAY



**SAWTOOTH 3**  
ALW22405  
RISING BLOOMS



**WING COLOR 1**  
ALW22408  
SUNNY GRASSLAND



**BODY COLOR 3**  
PE460  
SIENNA BRICK



**WING OUTLINE 1**  
ALW22403  
PICNIC ON  
THE PRAIRIE



**WING COLOR 4**  
ALW22402  
BED OF ROSES  
MAUVE



**BODY COLOR 1**  
PE519  
PACIFIC



**WING OUTLINE 4**  
PE506  
SUGAR PLUM



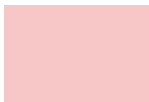
**WING COLOR 2**  
ALW22407  
HILLSIDE MEADOW  
WIND



**SAWTOOTH 4**  
ALW22411  
BLOOMS & STEMS



**WING OUTLINE 2**  
PE466  
HUNTER FIELDS



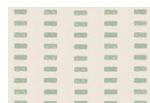
**BODY COLOR 4**  
PE420  
CRYSTAL PINK



**BODY COLOR 2**  
PE463  
ZAMBIA STONE



**BINDING**  
ALW22401  
SASHIKO MENDING  
TAN



**WING COLOR 3**  
ALW22410  
BRICK ROAD



**BACKING**  
ALW22400  
FIELDS OF MAY

FABRIC REQUIREMENTS

PROJECT INFO



PROJECT NAME: FLUTTERBY EFFECT

DESIGNED BY: THE WANNABE GRANDMA

FINISHED SIZE: 20" x 70"

[CLICK HERE FOR PATTERN](#)

PATTERN AVAILABLE FOR PURCHASE