

XXXXXXXXXXXXXXXXXXXXXXXXXXXX

A DIVISION OF AGF

Flora

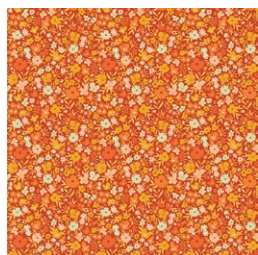
PLACEMATS

DESIGNED BY AGFstudio

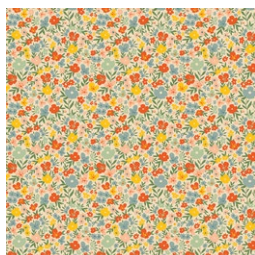


Grow & HARVEST

FABRICS DESIGNED BY ALEXANDRA BORDALLO



GRH14409
FLOWERY MEADOWS BRIGHT



GRH14404
FLOWERY MEADOWS PALE

ADDITIONAL BLENDERS FOR THIS PROJECT



PE459
TURMERIC



PE523
LATTE



PE447
PATINA GREEN



PE435
PBANANA CREAM



DENL4000
SOFT SAND





FINISHED SIZE | 14" x 14"

FABRIC REQUIREMENTS

Placemat 1

Fabric **A** GRH14409 FQ.

Fabric **B** PE459 FQ.

Fabric **C** PE523 $\frac{1}{8}$ yd.

Fabric **D** DENL4000 $\frac{1}{2}$ yd.

Placemat 2

Fabric **A** GRH14404 FQ.

Fabric **B** PE447 FQ.

Fabric **C** PE435 $\frac{1}{8}$ yd.

Fabric **D** DENL4000 $\frac{1}{2}$ yd.

ADDITIONAL MATERIAL

Double sided fusible interfacing.

CUTTING DIRECTIONS

$\frac{1}{4}$ " seam allowances are included.
WOF means width of the fabric.

- One (1) template 3 from fabric **A**.
- One (1) template 2 from fabric **B**.
- One (1) template 4 from fabric **C**.
- Four (4) 17" x 16" rectangles from fabric **D**.

CONSTRUCTION

Sew all rights sides together with $\frac{1}{4}$ " seam allowance.

- Place double sided fusible interfacing on the wrong side of the template cutouts from fabric **A**, **B** and **C**.
- Take one (1) template 4 from fabric **C** and one (1) template 3 from fabric **A** and place the fabric **C** piece on top of fabric **A**.
- Make sure you center your piece.



DIAGRAM 1

- Now, place one (1) template 2 from fabric **B** and place it under the previous piece right side facing up.



DIAGRAM 2

- Place one (1) 17" x 16" rectangle from fabric **D** under the assembled piece.
- Take batting fabric and place it under fabric **D**.
- With an iron, press carefully in order for all of your pieces to stick.



DIAGRAM 3

- Place the other 17" x 16" rectangle from fabric **D** under the batting. Pin your pieces.

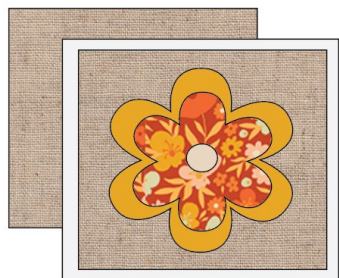


DIAGRAM 4

- Top stitch all the pieces with desired color thread.
- Then, take template 1, place it on top of your piece. Make sure you center it and trace the flower template.

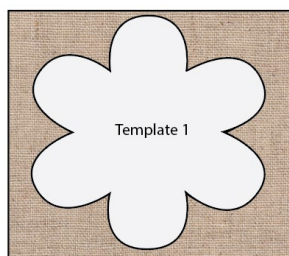


DIAGRAM 5

- Remove the template and sew all around with a zig zag stitch.



DIAGRAM 6

- Take a pair of scissors and cut all close to the zig zag stitch. Be careful not to cut through the thread.
- Repeat the same construction for the other placemat and enjoy!



DIAGRAM 7

XXXXXXXXXXXXXXXXXXXXXXXXXXXXXXXXXXXX

*Congratulations
& enjoy*

XXXXXXXXXXXXXXXXXXXXXXXXXXXXXXXXXXXX



artgalleryfabrics.com

NOTE: While all possible care has been taken to ensure the accuracy of this pattern, We are not responsible for printing errors or the way in which individual work varies.

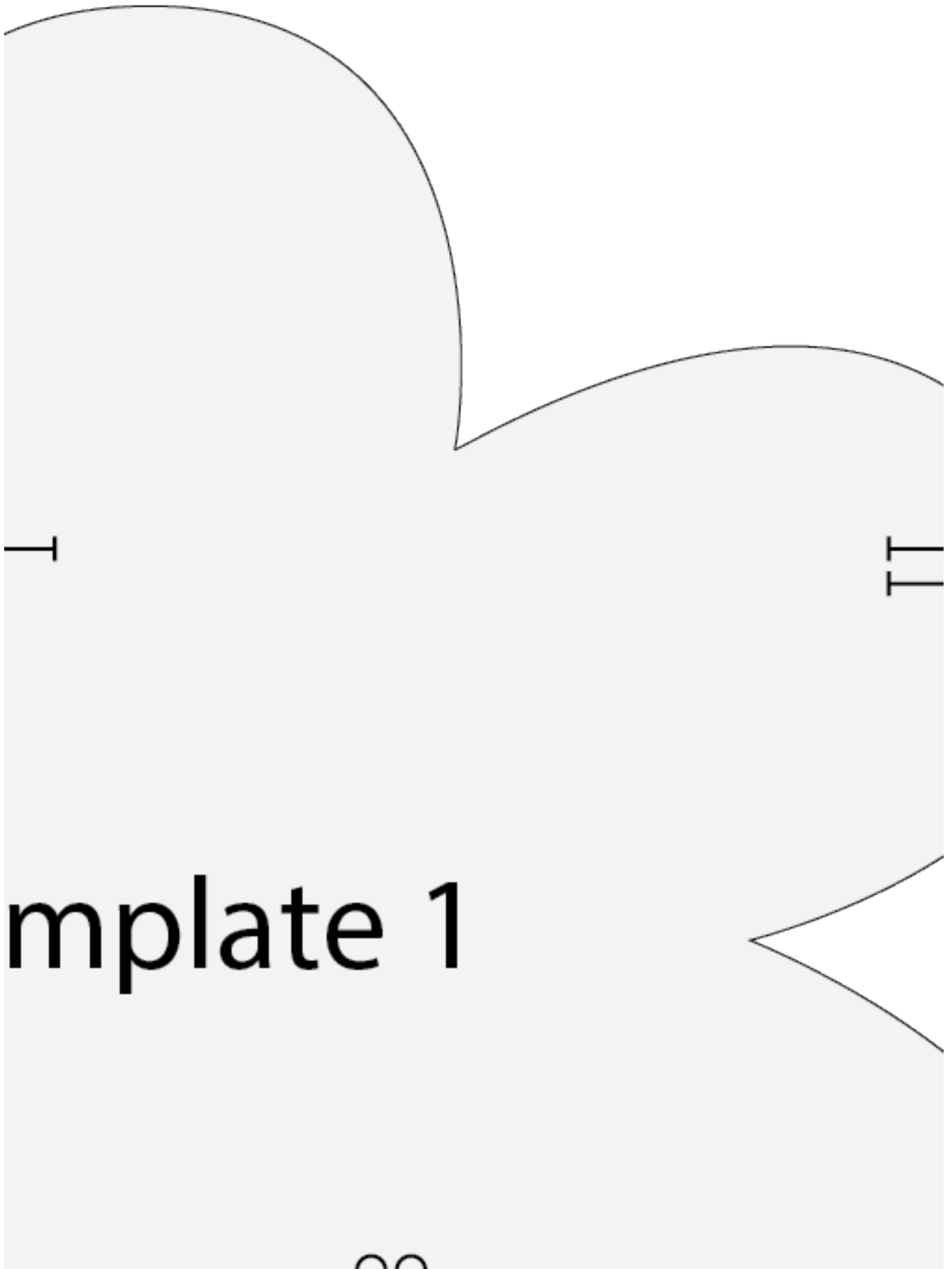
Please read instructions carefully before starting the construction of this quilt. If desired, wash and iron your fabrics before starting to cut.

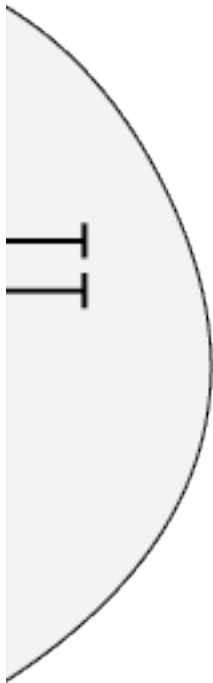
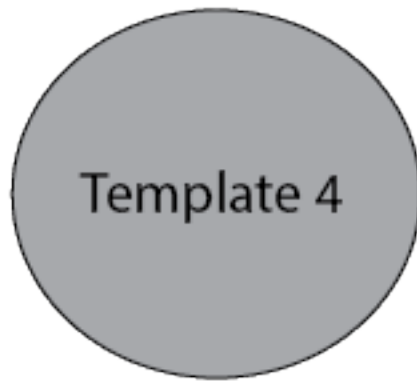
© 2022 Courtesy of Art Gallery Quilts LLC. All Rights Reserved.

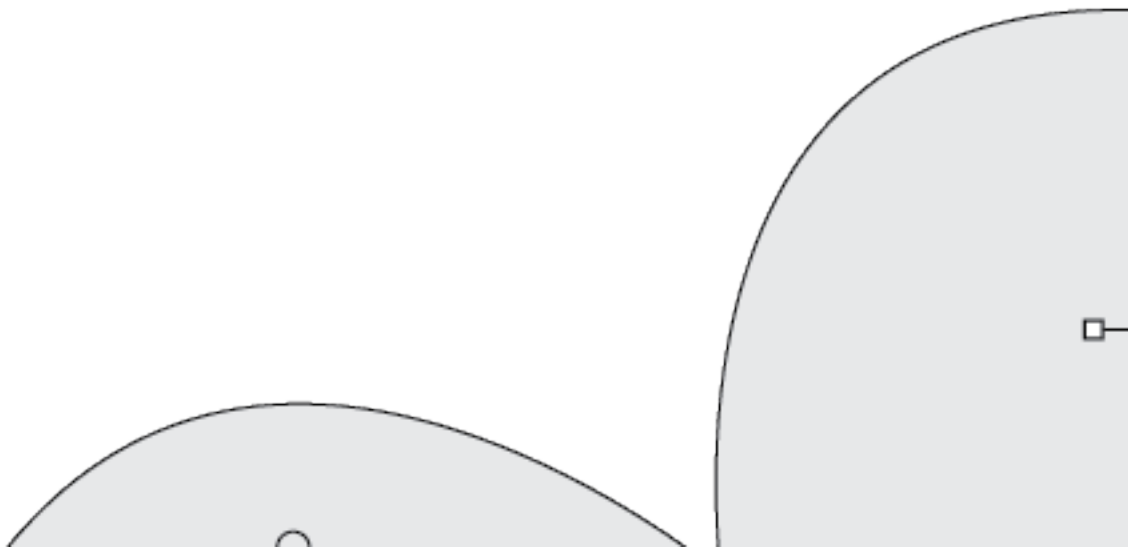
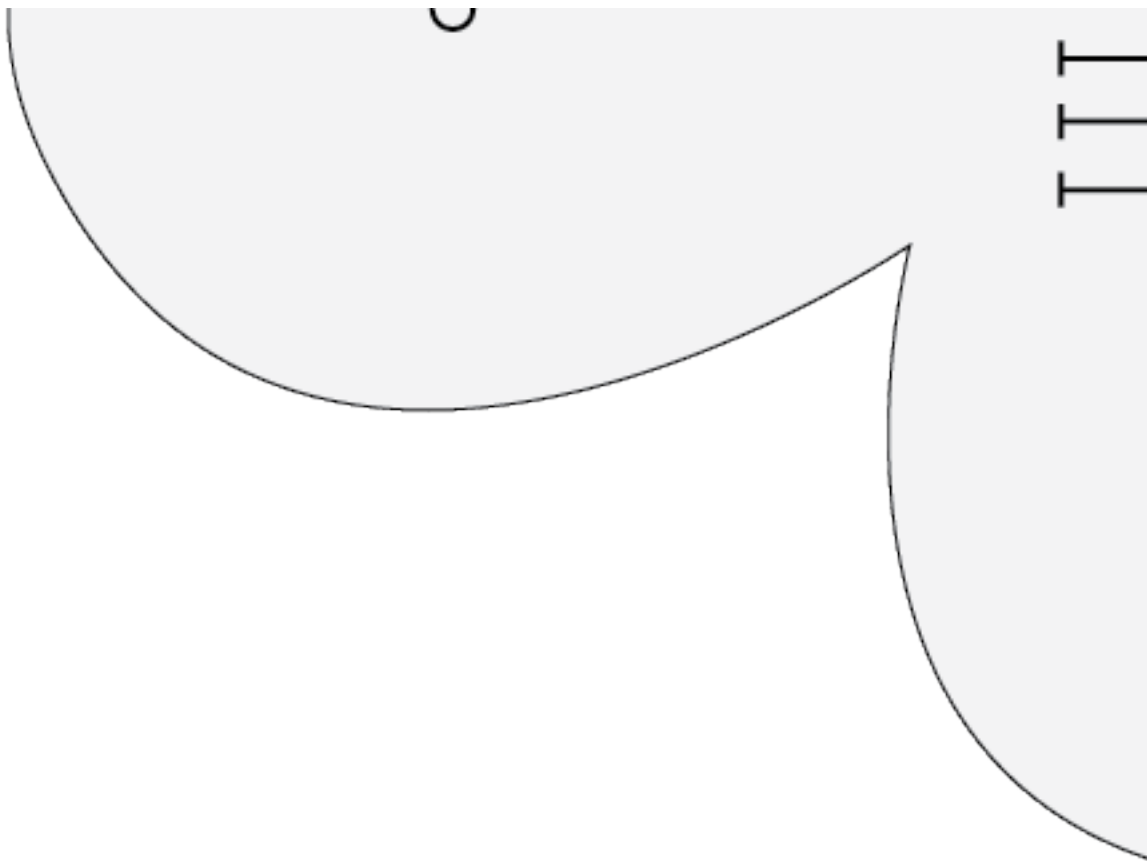
1st square

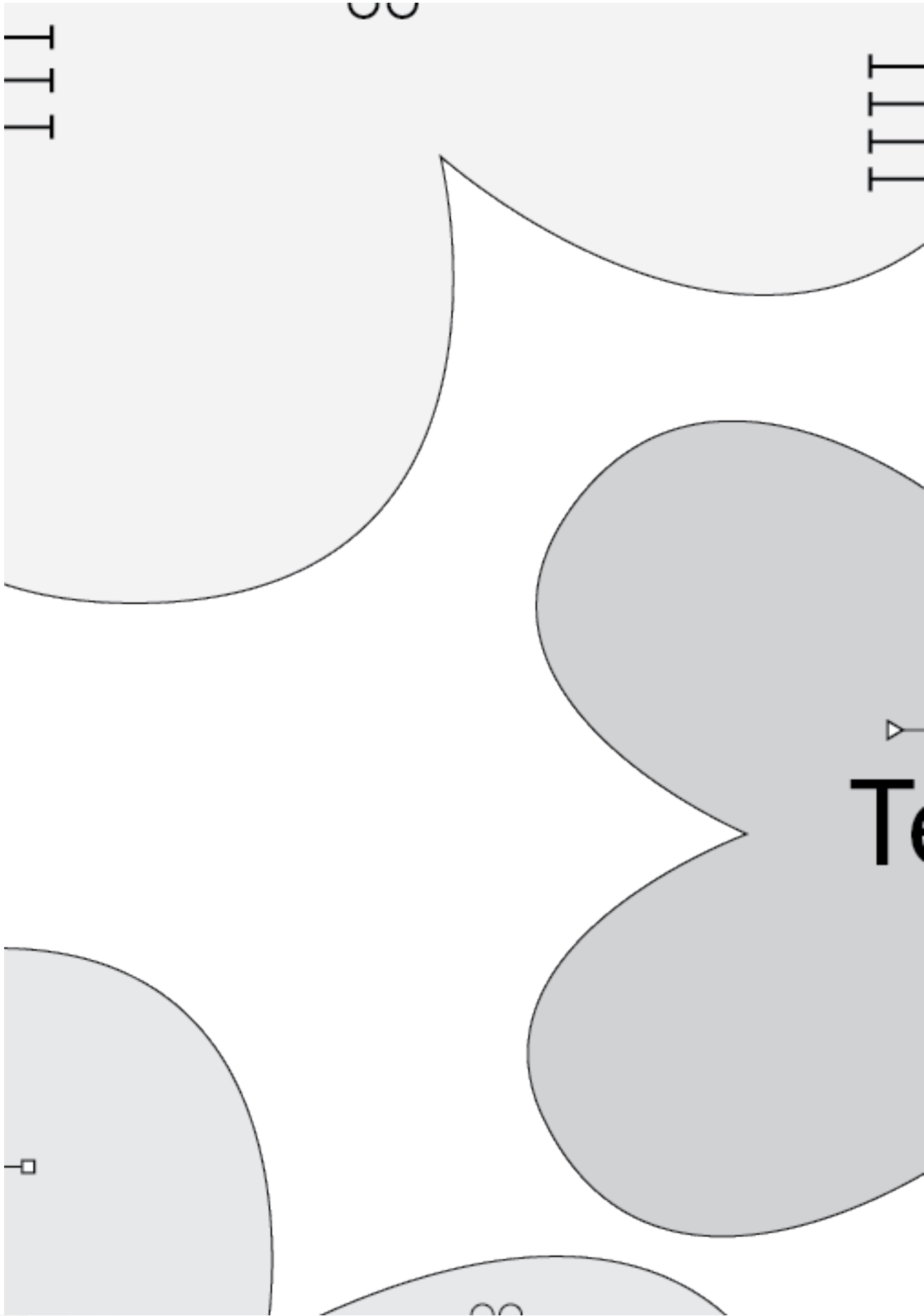


Te









template 3

Temp



late 2



