

X
X
X
X
X
X
X
X
X
X
X
X

x x x x x x x x x x x x x x x x x x



Woven Recollections

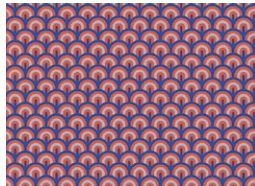
WALL ARTS

DESIGNED BY AGFstudio

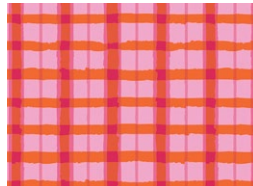


PERIWINKLE

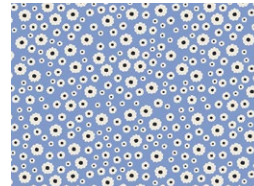
FABRICS DESIGNED BY AGF STUDIO



PWK68806
RECOLLECTION WAVES



PWK68809
WOVEN FIBERS



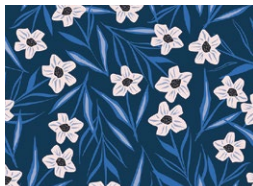
PWK68813
FLORET SPECKS



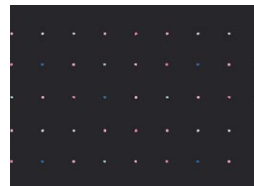
PWK68807
FRENCHIE VIVID



PWK68815
LINEAR FRAGMENTS



PWK68811
PERIWINKLES EVERLASTING

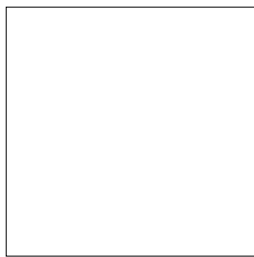


PWK68802
PLANTED SEEDS LUSTROUS



PWK68804
PERIWINKLES ETERNAL



PE433
SNOW

Woven Recollections

WALL ARTS

FINISHED SIZE | 12" x 15¾", 12" x 19"

FABRIC REQUIREMENTS

Fabric A	PWK68806	FQ.
Fabric B	PWK68809	FQ.
Fabric C	PWK68813	FQ.
Fabric D	PWK68807	FQ.
Fabric E	PWK68815	FQ.
Fabric F	PWK68811	⅝ yd.
Fabric G	PWK68802	FQ.
Fabric H	PWK68804	FQ.
Fabric I	PE433	⅝ yd.

CUTTING DIRECTIONS

¼" seam allowances are included.
WOF means width of fabric.

- Two (2) 13" x 1½" strips from fabric **A**.
- Two (2) 2½" x 5" rectangles from fabric **A** (handles).
- Two (2) 13" x 1½" strips from fabric **B**.
- Two (2) 13" x 1½" strips from fabric **C**.
- One (1) 13" x 1½" strips from fabric **D**.
- One (1) 13" x 1½" strips from fabric **E**.
- One (1) 12½" x 19½" rectangle from fabric **F** (backing).
- One (1) 12½" x 3½" rectangle from fabric **F**.
- One (1) 13" x 1½" strips from fabric **F**.
- One (1) 2½" x WOF strip from fabric **F**.

- Two (2) 2½" x 5" rectangles from fabric **F** (handles).
- One (1) 13" x 1½" strips from fabric **G**.
- One (1) 13" x 1½" strips from fabric **H**.
- One (1) wall art template from fabric **I** (backing).
- Two (2) 16½" x 2½" strips from fabric **I**.
- One (1) 2½" x WOF strip from fabric **I**.
- Ten (10) 13" x 1" strips from fabric **I**.

CONSTRUCTION

Sew all rights sides together with ¼" seam allowance.

Wall Art 1

- Take two (2) 13" x 1½" strips from fabric **A, B** and **C**, one (1) 13" x 1½" strips from fabrics **D, E, F, G, H** and ten (10) 10" x 1" strips from fabric **I** and join them in the order shown on the diagram below.



DIAGRAM 1

- Quilt as desired. Then, take template 2 and place it on top of the assembled piece.
- Align the pattern to the top part of the quilted piece and center it.
- Trace the template and cut.

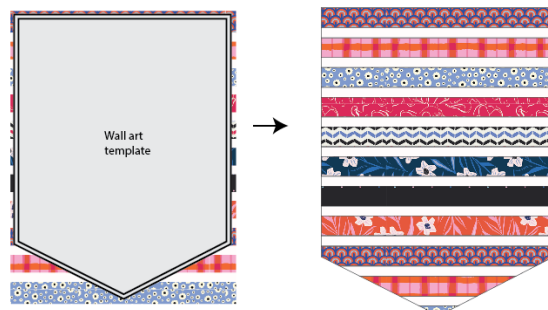


DIAGRAM 2

Create the loop:

- Take two (2) $2\frac{1}{2}$ " x 5" strips from fabric **A**.
- Take one strip and fold the edges to the center for fabric **A** strip and then fold in half.
- Sew the edges with matching thread.
- Repeat the same process to the other strip.

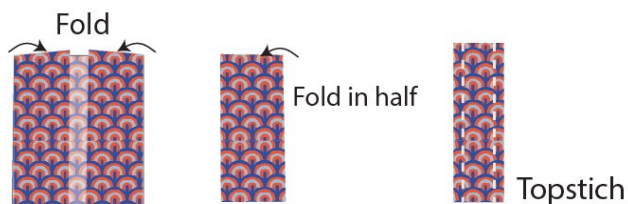


DIAGRAM 3

- Take the strips and fold them in half.
- Measure $1\frac{1}{2}$ " from the edge in and place them with aligned with the top edge of the wall hanging.
- Pin in place.



DIAGRAM 4

- Take the template 1 piece from fabric **I** and place it right sides facing together with the front of the wall hanging.
- Pin and sew all around leaving about 3" of opening in order to turn your piece inside out.

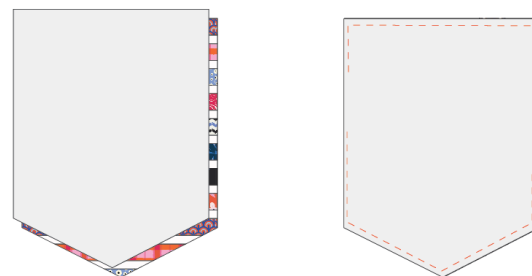


DIAGRAM 5

- Turn your piece inside out. Handstitch the opening.



DIAGRAM 6

Wall Art 2

- Join one (1) $2\frac{1}{2}$ " x WOF strip from fabrics **F** and **I**.



DIAGRAM 7

- Cut sixteen (16) 2½" vertical rectangles.



DIAGRAM 8

- Rotate eight (8) of the **F** pieces and join four (4) pieces on each row, following the diagram below.
- Join each row creating a 8½" x 16½" piece.

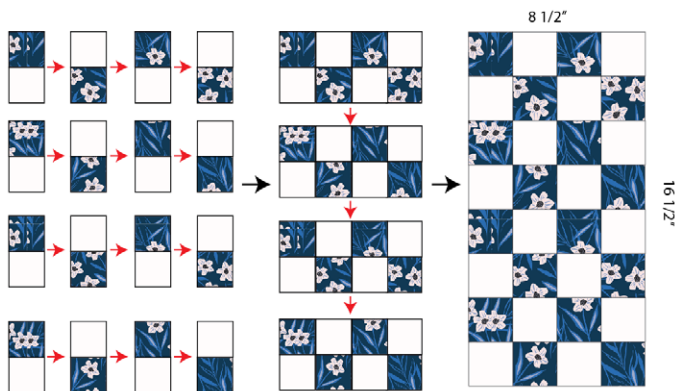


DIAGRAM 9

- Now, take two (2) 16½" x 2½" rectangles from fabric **C** and join one on each side of the assembled piece.

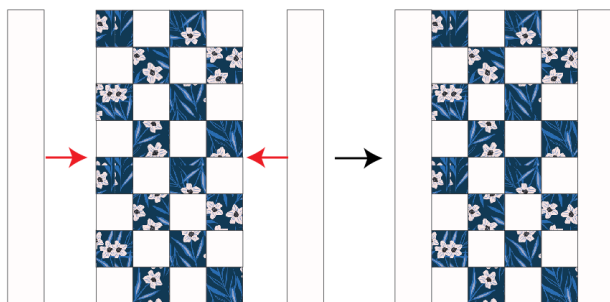


DIAGRAM 10

- Join one (1) 12½" x 3½" rectangle from fabric **F** to the top part on the assembled piece.
- Quilt your piece as desired.

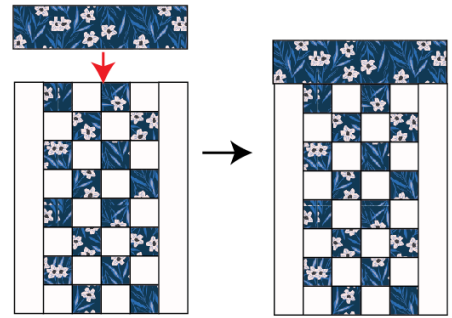


DIAGRAM 11

Create the loop:

- Take two (2) 2½" x 5" strips from fabric **F**.
- Take one strip and fold the edges to the center for fabric **F** strip and then fold in half.
- Sew the edges with matching thread.
- Repeat the same process to the other strip.



DIAGRAM 12

- Take the strips and fold them in half.
- Measure 1½" from the edge in and place them aligned with the top edge of the wall hanging.
- Pin in place.

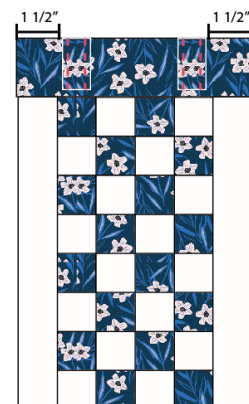


DIAGRAM 13

1. The first step in the process of creating a new product is to identify a market need. This involves conducting market research to understand the preferences and behaviors of potential customers.



- _____



XXXXXXXXXXXXXXXXXXXXXXXXXXXXXXXXXXXX

*Congratulations
& enjoy*

XXXXXXXXXXXXXXXXXXXXXXXXXXXXXXXXXXXX



artgalleryfabrics.com

NOTE: While all possible care has been taken to ensure the accuracy of this pattern, We are not responsible for printing errors or the way in which individual work varies.

Please read instructions carefully before starting the construction of this quilt. If desired, wash and iron your fabrics before starting to cut.

© 2022 Courtesy of Art Gallery Quilts LLC. All Rights Reserved.

1" Square

Wall

art

tem

FF

