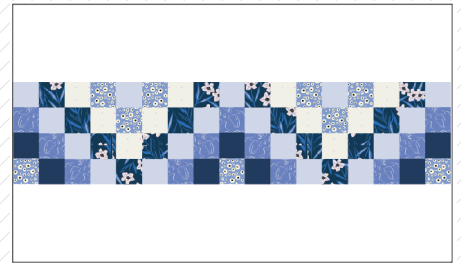


X
X
X
X
X
X
X
X
X
X
X
X
X



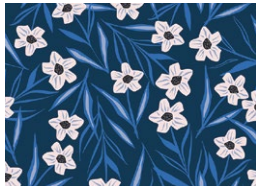
Mod PILLOW

DESIGNED BY AGFstudio

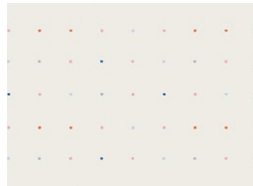


PERIWINKLE

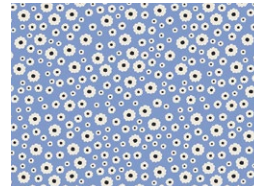
FABRICS DESIGNED BY AGF STUDIO



PWK68811
PERIWINKLES EVERLASTING



PWK68805
PLANTED SEEDS LUMINOUS

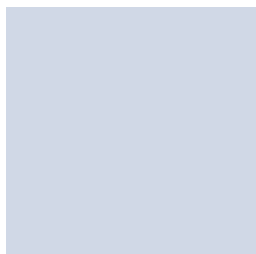


PWK68813
FLORET SPECKS



PWK68801
FRENCHIE SERENE

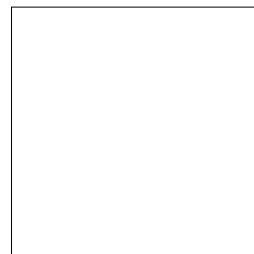
ADDITIONAL BLENDERS FOR THIS PROJECT



PE529
PERIWINKLE



PE498
HEART OF THE OCEAN



PE433
SNOW



Mod PILLOW

FINISHED SIZE | 34" x 20"

FABRIC REQUIREMENTS

Fabric A	PWK68811	½ yd.
Fabric B	PWK68805	¼ yd.
Fabric C	PWK68813	¼ yd.
Fabric D	PWK68801	¼ yd.
Fabric E	PE529	½ yd.
Fabric F	PE498	½ yd.
Fabric G	PE433	¾ yd.

BACKING FABRIC
PE433 (Included)

CUTTING DIRECTIONS

*¼" seam allowances are included.
WOF means width of fabric.*

- Three (3) 2½" x 18" strips from fabric **A**.
- Two (2) 2½" x 18" strips from fabric **B**.
- Two (2) 2½" x 18" strips from fabric **C**.
- Three (3) 2½" x 18" strips from fabric **D**.
- Four (4) 2½" x 18" strips from fabric **E**.
- Two (2) 2½" x 18" strips from fabric **F**.
- Two (2) 34½" x 6½" rectangles from fabric **G**.
- Two (2) 24" x 20½" rectangles from fabric **G** (back of pillow).

CONSTRUCTION

Sew all rights sides together with ¼" seam allowance.

Strip Set 1:

- Take one (1) 2½" x 18" strip from fabrics **C**, **D**, **E** and **F** and join them in the the following order.

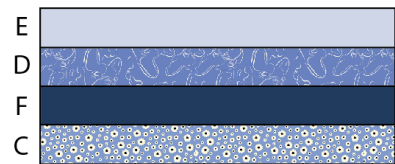


DIAGRAM 1

- Cut three (3) 2½" vertical strips.

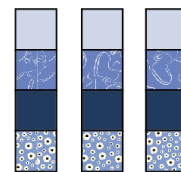


DIAGRAM 2

Strip Set 2:

- Take one (1) 2½" x 18" strip from fabrics **A**, **D**, **E** and **F** and join them in the the following order.



DIAGRAM 3

- Cut four (4) 2½" vertical strips.

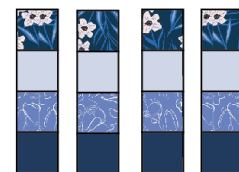


DIAGRAM 4

Strip Set 3:

- Take one (1) $2\frac{1}{2}$ " x 18" strip from fabrics **A**, **B**, **D** and **E** and join them in the the following order.

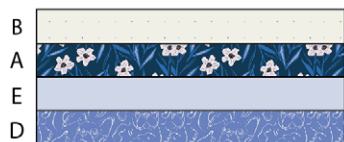


DIAGRAM 5

- Cut four (4) $2\frac{1}{2}$ " vertical strips.

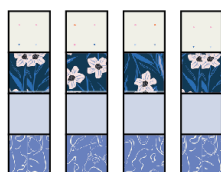


DIAGRAM 6

Strip Set 4:

- Take one (1) $2\frac{1}{2}$ " x 18" strip from fabrics **A**, **B**, **C** and **E** and join them in the the following order.

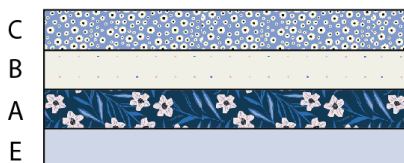


DIAGRAM 7

- Cut six (6) $2\frac{1}{2}$ " vertical strips.

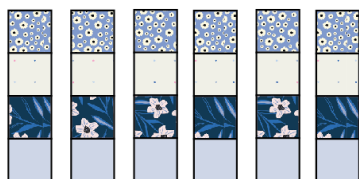


DIAGRAM 8

- Take two (2) strips and unsew fabric **E** and place them on top of fabric **C**, having the order of these two strip sets to **E**, **C**, **B**, **A**. We will call them Strip Set 4.1.

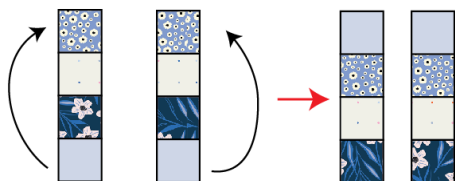


DIAGRAM 9

- Take your strip sets and join them following the order on the diagram below.

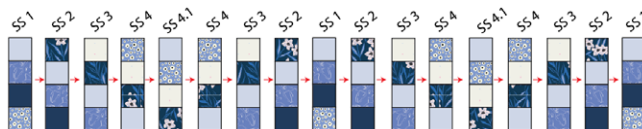


DIAGRAM 10

- Take two (2) $34\frac{1}{2}$ " x $6\frac{1}{2}$ " rectangles and join them one on the top and one on the bottom of the assembled piece.

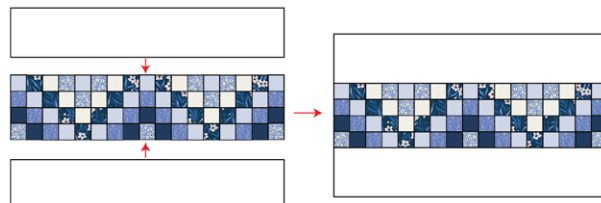
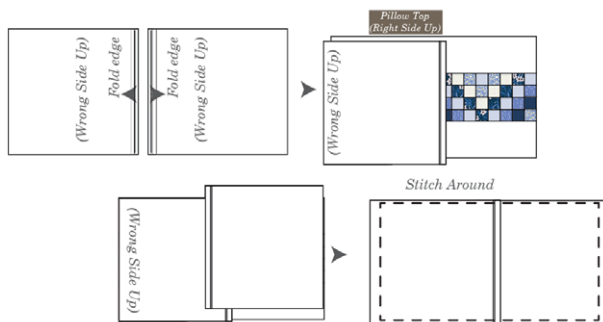


DIAGRAM 11

BACK OF PILLOW

- Take both 24" x 20½" rectangles from fabric **G**.
- Fold one bottom edge ½" towards the wrong side of the fabric of one of the rectangle.
- Fold the same edge ½" again and edge stitch the fold in place to have a clean edge.
- Repeat the same for the top edge of the bottom piece.
- Take the quilted pillow top and lay it flat right side up.
- Take one rectangle from fabric **G** and align it wrong side up to the left side of the pillow top.
- Take the other rectangle from fabric **G** and align it wrong side up to the right side of the pillow top.
- Pin the three pieces in place and sew around the edges at ¼".
- Clip the corners and flip the piece to the right side of the fabric.
- Fill the pillow with a 34" x 20" pillow form and enjoy!



XXXXXXXXXXXXXXXXXXXXXXXXXXXXXXXXXXXX

*Congratulations
& enjoy*

XXXXXXXXXXXXXXXXXXXXXXXXXXXXXXXXXXXX



artgalleryfabrics.com

NOTE: While all possible care has been taken to ensure the accuracy of this pattern, We are not responsible for printing errors or the way in which individual work varies.

Please read instructions carefully before starting the construction of this quilt. If desired, wash and iron your fabrics before starting to cut.

© 2022 Courtesy of Art Gallery Quilts LLC. All Rights Reserved.