



Grandma's Pillow

DESIGNED BY AGFstudio



Gloria

FABRICS DESIGNED BY MAUREEN CRACKNELL



GLR-44300
GRANDMA'S COUCH



GLR-44301
SPRINKLED FLORETS



GLR-44305
THE DAWN CHORUS

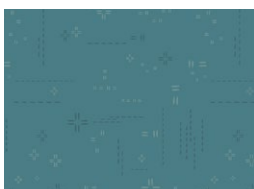


GLR-44314
NOSTALGIA MEADOW RUST

ADDITIONAL BLENDERS FOR THIS PROJECT



DEN-L-4000
SOFT SAND



DSE-716
TEAL FOG



FEEL THE DIFFERENCE

© 2022 Courtesy of Art Gallery Quilts LLC. All Rights Reserved.

Grandma's Pillow

FINISHED SIZE | 17½" x 17½"

FABRIC REQUIREMENTS

Fabric A	DSE-716	¾ yd.
Fabric B	GLR-44300	¼ yd.
Fabric C	DEN-L-4000	⅛ yd.
Fabric D	GLR-44314	Fat 8th
Fabric E	GLR-44301	Fat 8th
Fabric F	GLR-44305	Fat 8th

CUTTING DIRECTIONS

¼" seam allowances are included.
WOF means width of fabric.

- Fifteen (15) 2½" squares from fabric **A**.
- Four (4) 20" x 2¼" strips from fabric **A**.
- Two (2) 18" x 14" rectangles from fabric **A**.
- Two (2) 2½" squares from fabric **A**.
- Nine (9) 6" x 2½" rectangles from fabric **A**.
- Eight (8) 6" x 2½" rectangles from fabric **B**.
- Six (6) 6" x 2½" rectangles from fabric **C**.

- Four (4) 6" x 2½" rectangles from fabric **D**.
- Two (2) 6" x 2½" rectangles from fabric **E**.
- One (1) fussy cut square from fabric **F**. Make a 2½" square template, turn it on point and place it on top of your favorite design and cut. For template placement and cutting follow diagram 1.

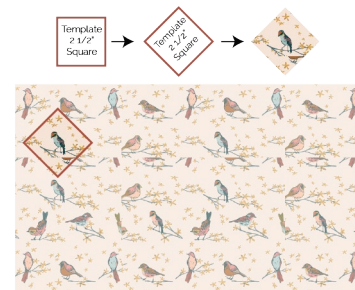


DIAGRAM 1

Strip Set 1

- Take one (1) 6" x 2½" rectangles from fabrics **A**, **B**, **C**, **D** and **E**.
- Join them as follows:
- **A - B - C - D - E**
- Subdivide the block into two (2) strips of 2½".

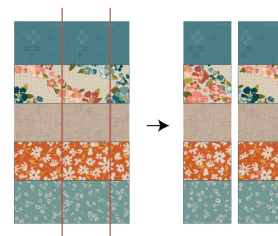


DIAGRAM 2

- Take the fussy cut square from fabric **F** and join it in the middle of the strips:

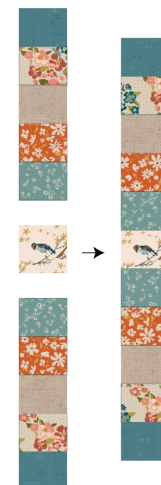


DIAGRAM 3

Strip Set 2 (x 2)

- Take two (2) 6" x 2½" rectangles from fabrics **A**, **B**, **C** and **D**, and one (1) 6" x 2½" rectangle from fabric **E**.
- Join them as follows:
- A - B - C - D - E - D - C - B - A**
- Subdivide the block into two (2) strips of 2½".



DIAGRAM 4

Strip Set 3 (x 2)

- Take two (2) 6" x 2½" rectangles from fabrics **A**, **B** and **C**, and one (1) 6" x 2½" rectangle from fabric **D**.
- Join them as follows:
- A - B - C - D - C - B - A**
- Subdivide the block into two (2) strips of 2½".



DIAGRAM 5

Strip Set 4 (x 2)

- Take two (2) 6" x 2½" rectangles from fabrics **A**, and **B**, and one (1) 6" x 2½" rectangle from fabric **C**.
- Join them as follows:
- A - B - C - B - A**
- Subdivide the block into two (2) strips of 2½".

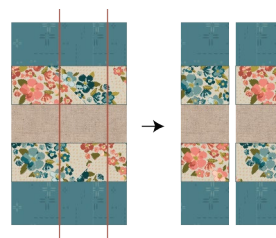


DIAGRAM 6

Strip Set 5 (x 2)

- Take two (2) 6" x 2½" rectangles from fabric **A** and one (1) 6" x 2½" rectangles from fabric **B**.
- Join them as follows:
- A - B - A**
- Subdivide the block into two (2) strips of 2½".

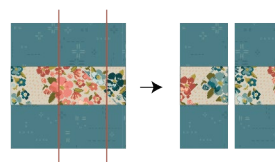


DIAGRAM 7

Pillow Top

- Join the resulting strip sets into a block.
- A - SS 5 - SS 4 - SS 3 - SS 2 - SS 1 - SS 2 - SS 3 - SS 4 - SS 5 - A**.
- For fabric placement and attachment follow diagram 8.

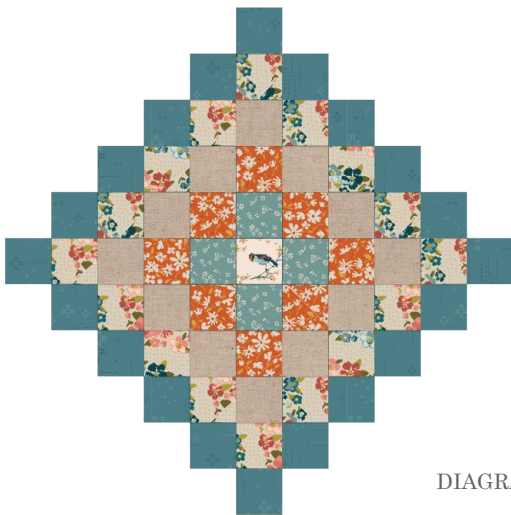


DIAGRAM 8

- Turn the pillow top 45 degrees and trim the edges to get a square.

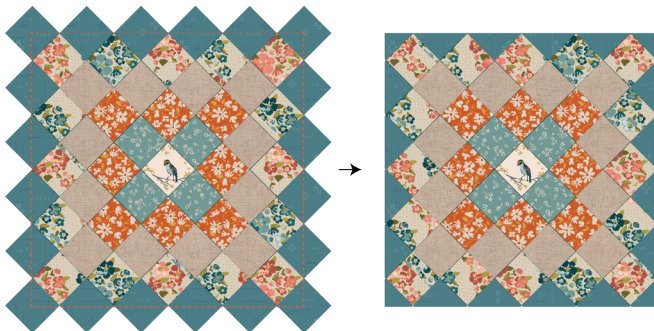


DIAGRAM 9

- Take four (4) 20" x 2¼" strips from fabric A.
- Join two strips to the sides of the block and trim excess fabric.
- Join the other two strips to the top and bottom and trim excess fabric.

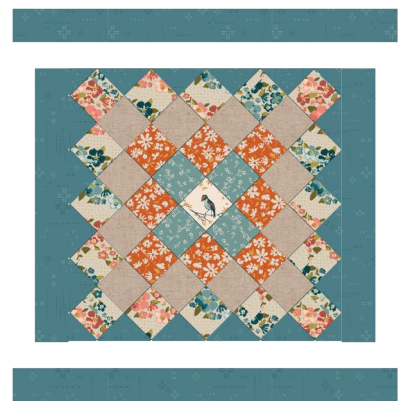


DIAGRAM 10

BACK OF THE PILLOW

Sew rights sides together.

- Take both 18" x 14½" rectangles from fabric **A**.
- Fold one 18" edge ½" towards the wrong side of the fabric of each rectangle.
- Fold the same edge ½" again and edge stitch the fold in place to have a clean edge.
- Take the quilted pillow top and lay it flat right side up.
- Take one rectangle from fabric **A** and align it wrong side up to the top side of the pillow top.
- Take the other rectangle from fabric **A** and align it wrong side up to the bottom side of the pillow top.
- Pin the three pieces in place and sew around the edges at ¼".
- Clip the corners and flip the piece to the right side of the fabric.
- Fill the pillow with a 18" x 18" pillow form and enjoy!

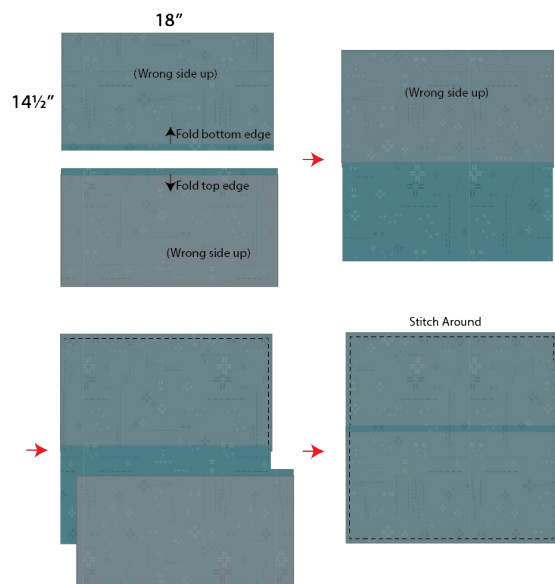


DIAGRAM 11

XXXXXXXXXXXXXXXXXXXXXXXXXXXXXXXXXXXX

*Congratulations
& enjoy*

XXXXXXXXXXXXXXXXXXXXXXXXXXXXXXXXXXXX



artgalleryfabrics.com

NOTE: While all possible care has been taken to ensure the accuracy of this pattern, We are not responsible for printing errors or the way in which individual work varies.

Please read instructions carefully before starting the construction of this quilt. If desired, wash and iron your fabrics before starting to cut.

© 2022 Courtesy of Art Gallery Quilts LLC. All Rights Reserved.