



Need
and
Lust?

ANGLES

XXXXXXXXXXXXXXXXXXXXXXXXXXXX

A DIVISION OF AGF

FOLLOW YOUR HEART PILLOW

DESIGNED BY AGFstudio



FABRICS DESIGNED BY PATTY BASEMI



TAT39914
MENDING HEARTS PANEL

ADDITIONAL BLENDERS FOR THIS PROJECT



PE405
CHERRY LIPGLOSS



FOLLOW YOUR HEART PILLOW

FINISHED SIZE | 24" x 24"

FABRIC REQUIREMENTS

Fabric **A** TAT39914 1 yd.

Fabric **B** PE405 $\frac{7}{8}$ yd.

BACKING FABRIC
PE405 (Included)

CUTTING DIRECTIONS

$\frac{1}{4}$ " seam allowances are included.
WOF means width of fabric.

- One (1) $16\frac{1}{2}$ " square from fabric **A** (center piece).
- Four (4) 10 " x 4 " rectangles from fabric **A** (heart section).
- Four (4) $7\frac{3}{4}$ " x 4 " rectangles from fabric **A** (off white area).
- Four (4) $4\frac{1}{4}$ " x 4 " rectangles from fabric **A** (off white area).
- Two (2) $24\frac{1}{2}$ " x 14 " rectangles from fabric **B** (back of pillow).
- Two (2) $16\frac{1}{2}$ " x 1 " strips from fabric **B**.
- Two (2) $17\frac{1}{2}$ " x 1 " strips from fabric **B**.

- Use the diagram below to cut your pieces from the panel.

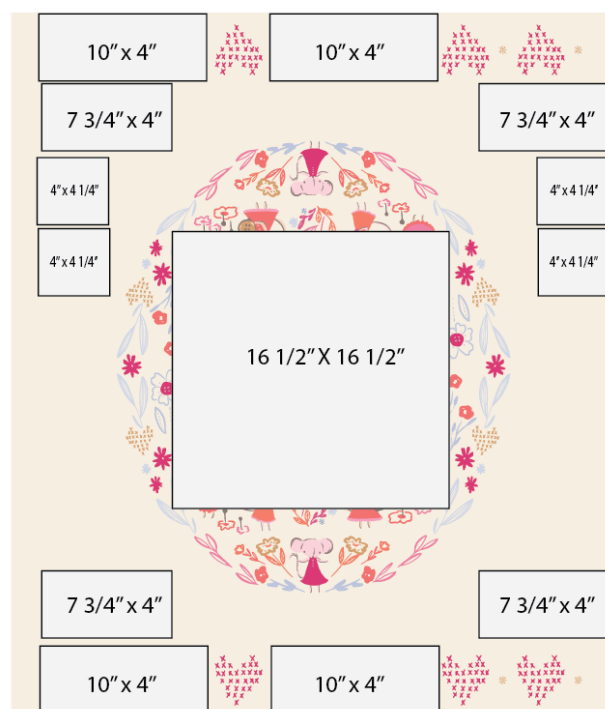


DIAGRAM 1

CONSTRUCTION

Sew all rights sides together with $\frac{1}{4}$ " seam allowance.

- Take two (2) $16\frac{1}{2}$ " x 1 " strips from fabric **B** and join them on the top and bottom of fabric **A** $16\frac{1}{2}$ " square.



DIAGRAM 2

- Take two (2) 17½" x 1" strips from fabric **B** and join them on each side of fabric **A** square.

Main Block



DIAGRAM 3

- Take one (1) 10" x 4" rectangle from fabric **A** (heart section) and two (2) 4¼" x 4" rectangles from fabric **A** and join them following the diagram below.
- Repeat the same construction one (1) more time.

Strip 1

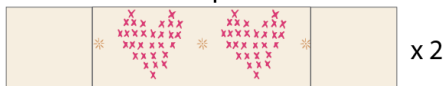


DIAGRAM 4

- Take one (1) 10" x 4" rectangle from fabric **A** (heart section) and two (2) 7³/₄" x 4" rectangles from fabric **A** and join them following the diagram below.
- Repeat the same construction one (1) more time.

Strip 2



DIAGRAM 5

- Take two (2) strip 1 and join one on each side of the main block. Make sure to follow the placement of the hearts following the diagram below.



DIAGRAM 6



- Take two (2) strip 2 and join one on the top and one on the bottom of the main block.
- Make sure to follow the placement of the hearts following the diagram below.
- Quilt as desired.

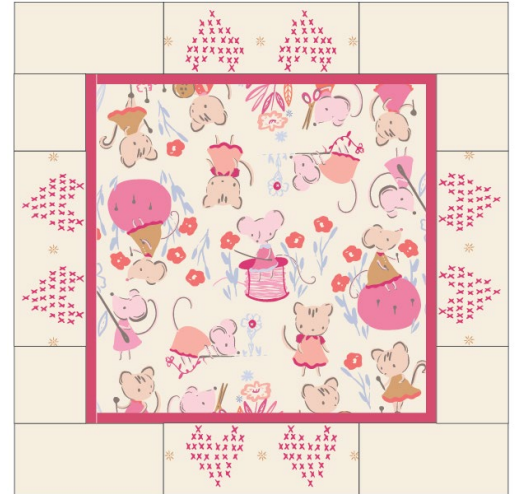
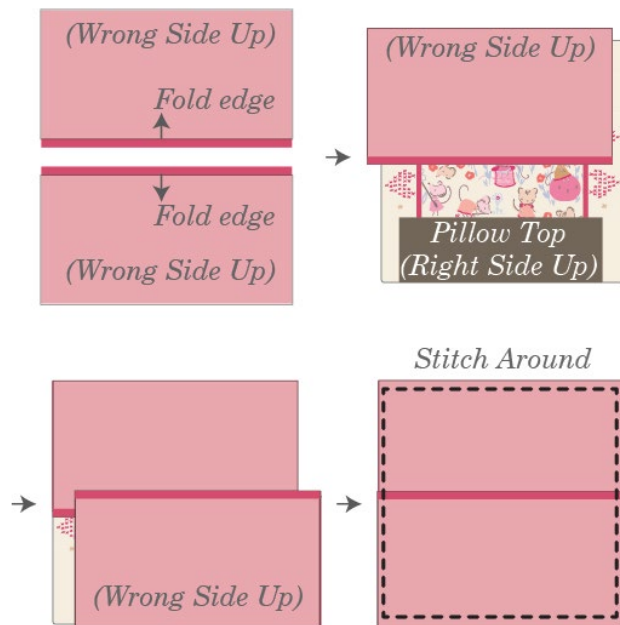


DIAGRAM 7

BACK OF PILLOW

Sew rights sides together.

- Take both 24½" x 18" rectangles from fabric **B**.
- Fold one bottom edge ½" towards the wrong side of the fabric of one of the rectangle.
- Fold the same edge ½" again and edge stitch the fold in place to have a clean edge.
- Repeat the same for the top edge of the bottom piece.
- Take the quilted pillow top and lay it flat right side up.
- Take one rectangle from fabric **B** and align it wrong side up to the top side of the pillow top.
- Take the other rectangle from fabric **B** and align it wrong side up to the bottom side of the pillow top.
- Pin the three pieces in place and sew around the edges at ¼".
- Clip the corners and flip the piece to the right side of the fabric.
- Fill the pillow with a 24" x 24" pillow form and enjoy!



XXXXXXXXXXXXXXXXXXXXXXXXXXXXXXXXXXXX

*Congratulations
& enjoy*

XXXXXXXXXXXXXXXXXXXXXXXXXXXXXXXXXXXX



artgalleryfabrics.com

NOTE: While all possible care has been taken to ensure the accuracy of this pattern, We are not responsible for printing errors or the way in which individual work varies.

Please read instructions carefully before starting the construction of this quilt. If desired, wash and iron your fabrics before starting to cut.

© 2022 Courtesy of Art Gallery Quilts LLC. All Rights Reserved.