

FAIRY Tale



ANGLES

A DIVISION OF AGF

FREE PATTERN

XXXXXXXXXXXXXXXXXXXXXXXXXXXX

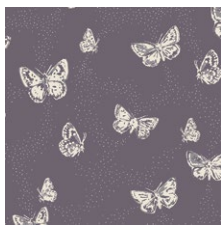
FAIRY Tale

DESIGNED BY AGFstudio

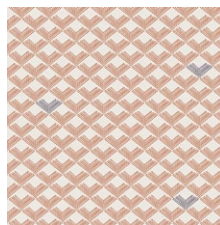


dollhouse

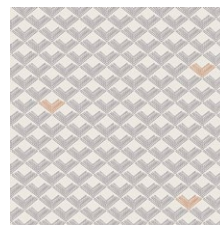
FABRICS DESIGNED BY AMY SINIBALDI



DHS-1083
FLUTTERDUST STARRY

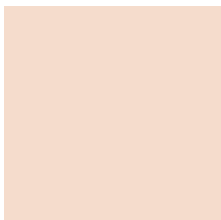


DHS-2082
ROOFTILES CLAY

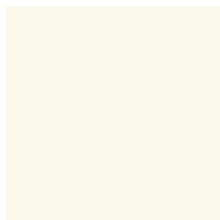


DHS-1082
ROOFTILES SLATE

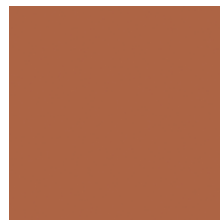
ADDITIONAL BLENDERS FOR THIS PROJECT



PE-471
SWEET MACADAMIA



PE-408
WHITE LINEN



PE-460
SIENNA BRICK



FAIRY Tale

FINISHED SIZE | 10" x 14"

FABRIC REQUIREMENTS

| | | |
|-----------------|----------|-------------------|
| Fabric A | DHS-1083 | FQ. |
| Fabric B | DHS-2082 | FQ. |
| Fabric C | DHS-1082 | $\frac{1}{8}$ yd. |
| Fabric D | PE-471 | Fat 8. |
| Fabric E | PE-408 | Fat 8. |
| Fabric F | PE-460 | Fat 8. |

BACKING FABRIC

Fabric **B** DHS-2082 (Included)

ADDITIONAL MATERIAL

Steam-a-Seam.

CUTTING DIRECTIONS

$\frac{1}{4}$ " seam allowances are included.

- One (1) 10 $\frac{1}{2}$ " x 8 $\frac{1}{2}$ " square from fabric **A**.
- One (1) back of pillow template from fabric **B**.
- Two (2) 10 $\frac{1}{2}$ " x 2 $\frac{3}{4}$ " rectangles from fabric **B**.
- One (1) 10 $\frac{1}{2}$ " x 2 $\frac{3}{4}$ " rectangle from fabric **C**.
- Two (2) 2" x 1 $\frac{1}{2}$ " rectangles from fabric **D**.
- Two (2) 2" x 1 $\frac{1}{2}$ " rectangles from fabric **E**.
- One (1) 5 $\frac{1}{4}$ " x 2" rectangle from fabric **F**.

CONSTRUCTION

Sew all rights sides together with $\frac{1}{4}$ " seam allowance.

- Start by joining two (2) 10 $\frac{1}{2}$ " x 2 $\frac{3}{4}$ " rectangles from fabric **B** and one (1) 10 $\frac{1}{2}$ " x 2 $\frac{3}{4}$ " rectangle from fabric **C** following diagram 1.

XXXXXXXXXXXXXXXXXXXXXXXXXXXXXXXXXXXX

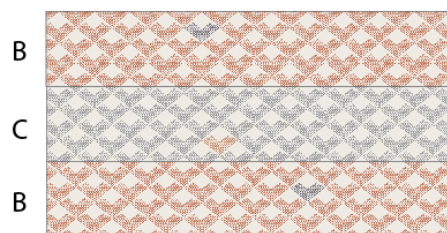


DIAGRAM 1

- Join one (1) 10 $\frac{1}{2}$ " x 8" rectangle from fabric **A** and the **BCB** piece.
- Quilt the piece as desired.



DIAGRAM 2

- Take the back of the pillow template and use it to cut your quilted piece.

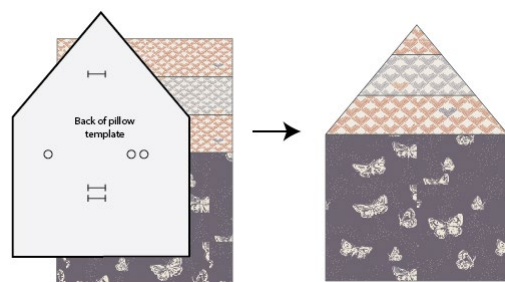


DIAGRAM 3

- Now, take two (2) 2 $\frac{1}{2}$ " x 1 $\frac{1}{2}$ " rectangles from fabrics **D** and **E** and one (1) 2" x 5" rectangle from fabric **F** and place steam-a-seam on the wrong side of the fabric.
- Then, place them on the front of the pillow on the fabric **A** area.
- Once you are satisfied with the position, press each piece carefully so the steam-a-seam sticks. Then, do any desired decorative stitch to add more security.

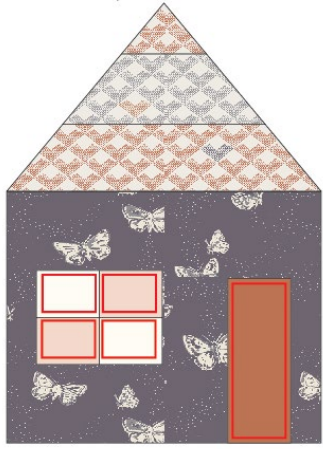


DIAGRAM 4

BACK OF PILLOW

- Take one (1) back of pillow template from fabric **B** and place it right sides facing each other with the assembled piece.
- Sew all around leaving about 3" of opening.
- Turn the pillow inside out and insert pillow stuffing.
- Machine or hand stitch the opening.
- Enjoy!

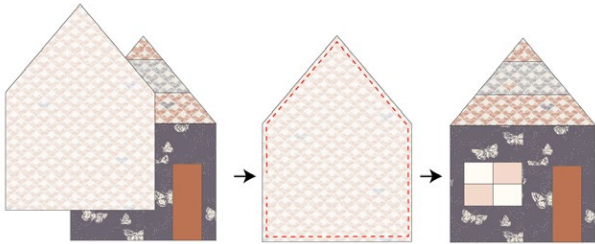


DIAGRAM 5

XXXXXXXXXXXXXXXXXXXXXXXXXXXXXXXXXXXX

*Congratulations
& enjoy*

XXXXXXXXXXXXXXXXXXXXXXXXXXXXXXXXXXXX

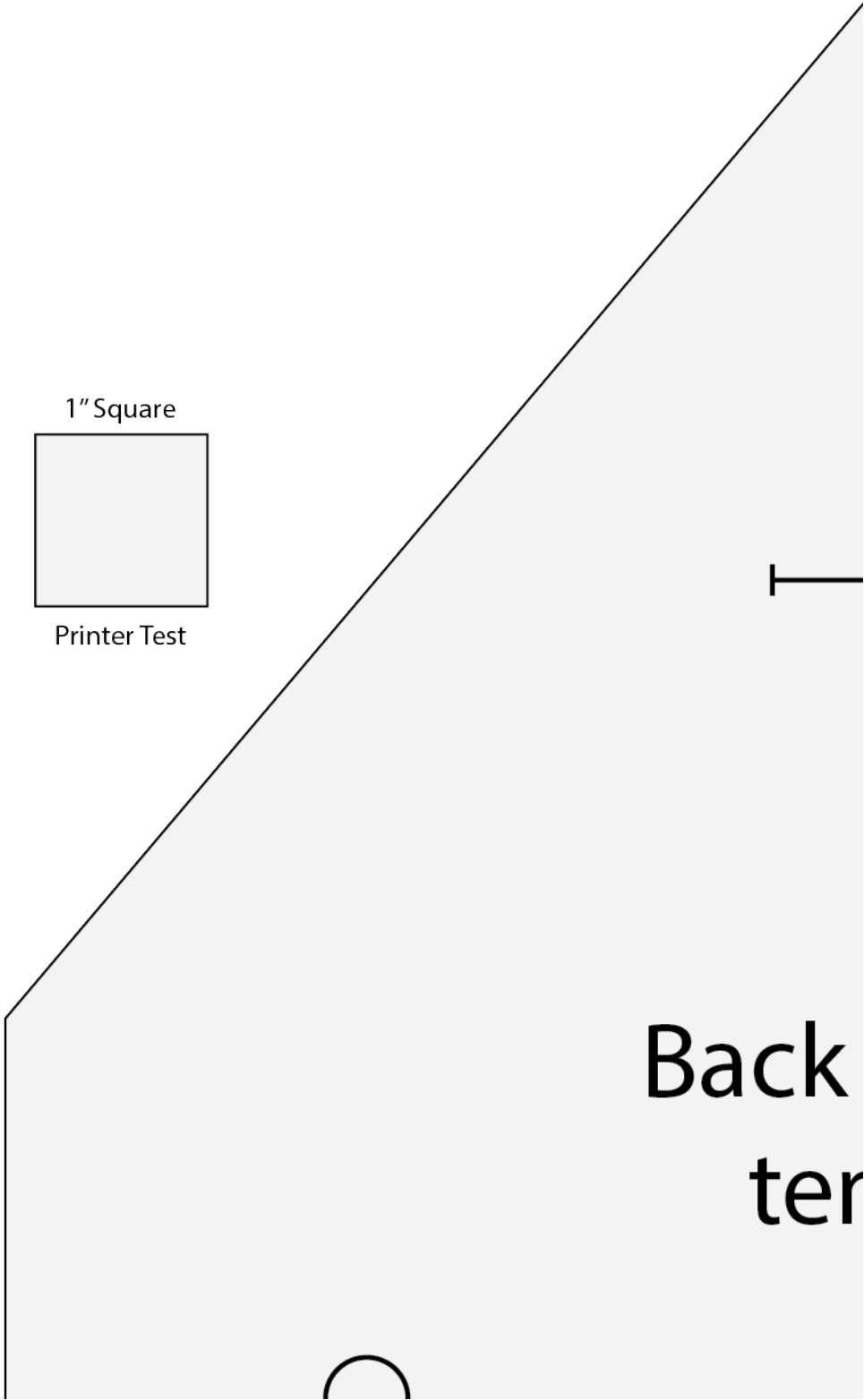


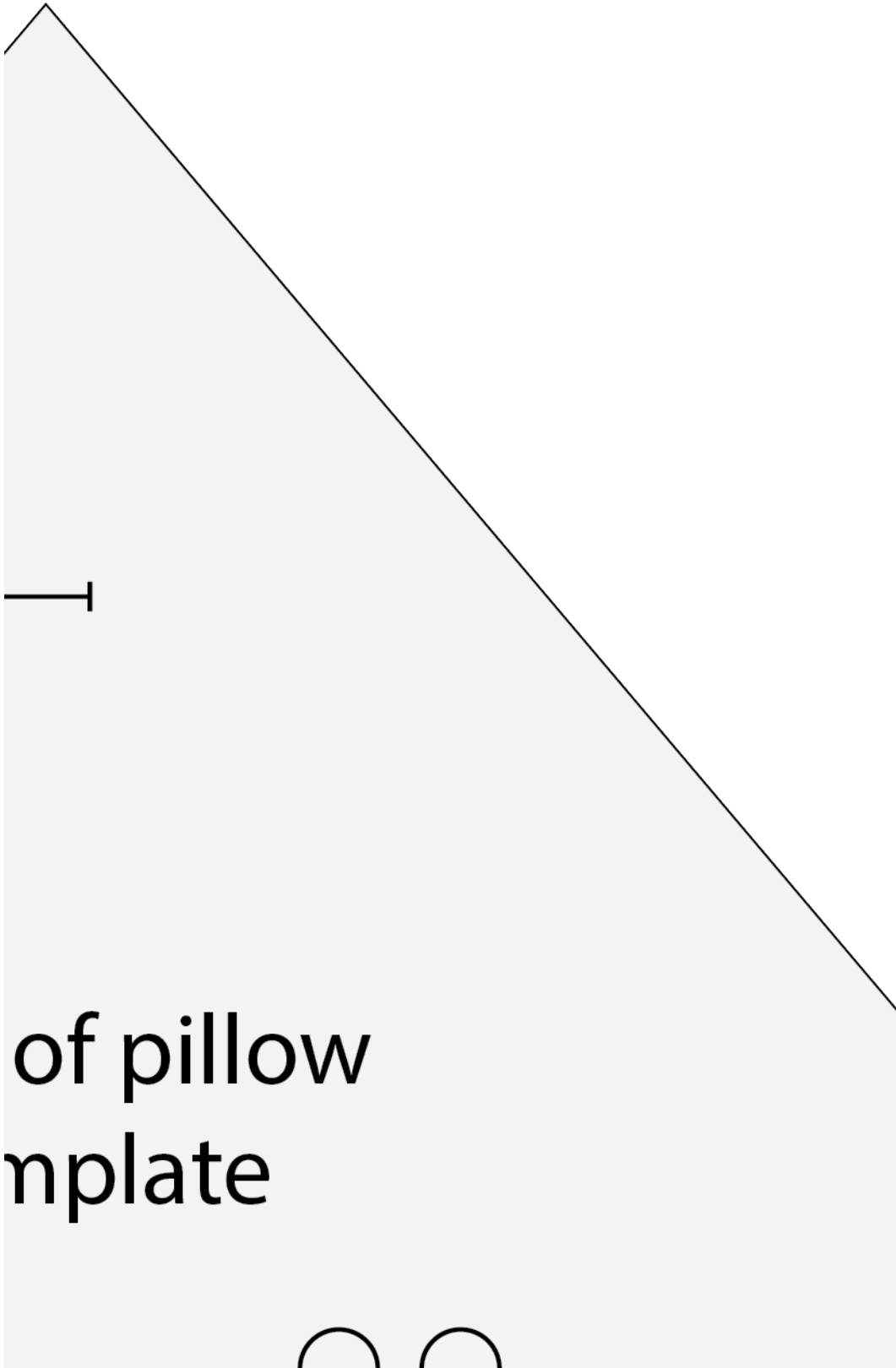
artgalleryfabrics.com

NOTE: While all possible care has been taken to ensure the accuracy of this pattern, We are not responsible for printing errors or the way in which individual work varies.

Please read instructions carefully before starting the construction of this quilt. If desired, wash and iron your fabrics before starting to cut.

© 2022 Courtesy of Art Gallery Quilts LLC. All Rights Reserved.





of pillow
nplate

