

Asphodelic

PILLOW



Asphodelic

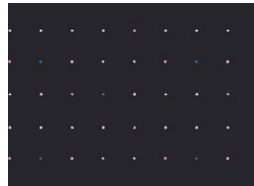
DESIGNED BY AGFstudio

PERIWINKLE

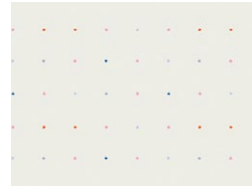
FABRICS DESIGNED BY AGF STUDIO



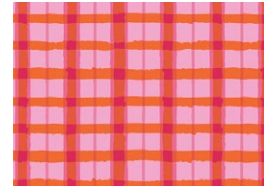
PWK68801
FRENCHIE SERENE



PWK68802
PLANTED SEEDS LUSTROUS

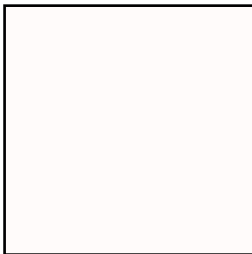


PWK68805
PLANTED SEEDS LUMINOUS

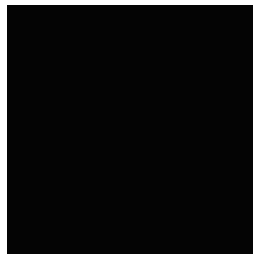


PWK68809
WOVEN FIBERS

ADDITIONAL BLENDERS FOR THIS PROJECT



PE433
SNOW



PE499
DEEP BLACK



Asphodelic

FINISHED SIZE | 21 ½" x 21½"

FABRIC REQUIREMENTS

PILLOW #1:

Fabric **A** PWK68805 ½ yd.

Fabric **B** PWK68809 ¼ yd.

Fabric **C** PE499 1 ¼ yd.

PILLOW #2:

Fabric **A** PWK68801 ½ yd.

Fabric **B** PWK68802 ¼ yd.

Fabric **C** PE433 1 ¼ yd.

EXTRA MATERIALS:

Hi-loft batting

Embroidery floss

CUTTING DIRECTIONS

Find the pattern pieces at the end of these instructions and tape them together, matching the letters & numbers, then cut out pattern pieces, ¼" seam allowances are included.

- One (1) Flower 1 from fabric **A** & Batting.
- One (1) Flower 2 from fabric **A** & Batting.
- One (1) Flower 3 from fabric **A** & Batting.
- One (1) Flower Center from fabric **B** & Batting.
- Two (2) 22" squares from fabric **C**.
- Two (2) 22" x 15" rectangle from fabric **C**.
- One (1) 22" squares from Batting,

CONSTRUCTION

Sew all rights sides together with ¼" seam allowance.

- Make a quiltly sandwich: Layer the 22" square batting piece between the 22" square fabric pieces from fabric **A**.
- Baste or pin together.



DIAGRAM 1

- Match up the fabric pattern pieces with their corresponding batting pieces. Pin together.
- Double check that you transferred the sewing line onto the fabric, or just refer visually to the sewing line when sewing if you prefer not to transfer.

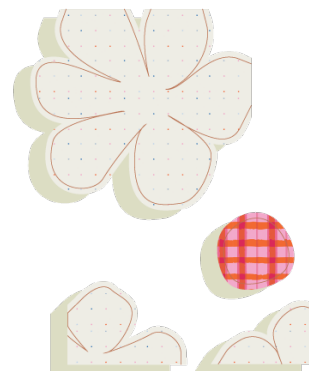


DIAGRAM 2

- Arrange the flower petals onto the 22" square top, right sides up, matching the raw edges.
- Sew along your marked sewing lines with a long straight stitch. (Approx. ½" away from raw edge.)

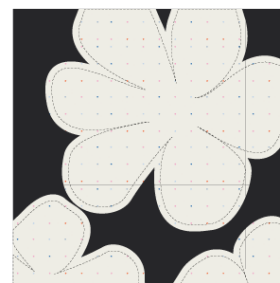


DIAGRAM 3

- Now, carefully trim away the excess fabric and batting with a sharp pair of little scissors.
- Cut with fabric laid out on a flat surface so as not to accidentally cut the white fabric background.

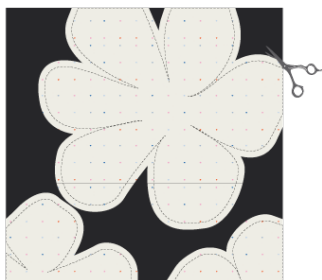


DIAGRAM 4

- Match the flower center with batting piece and pin to the center of the flower.
- Sew on stitching line with straight stitch and trim.
- Thread your machine with pink thread and set it to a satin stitch (a very tight zig-zag stitch).
- You may want to practice on a scrap version of the puffy flowers to work out any possible issues with stitch and tension settings before starting.
- Cover the raw edges and stitching of flowers with your pink satin stitch.

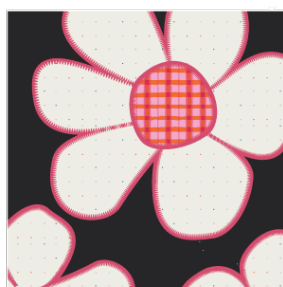


DIAGRAM 5

- With a disappearing marker mark on the background fabric, where you will place your embroidery crosses.
- Thread an embroidery needle with white embroidery thread and sew simple crosses measuring approximately $\frac{3}{8}$ " - $\frac{1}{2}$ ".
- Proceed to finish the backing.

- XXXXXXXXXXXXXXXXXXXXXXXXXXXXXXXXXXXX
- Repeat the previous steps for the other pillow.

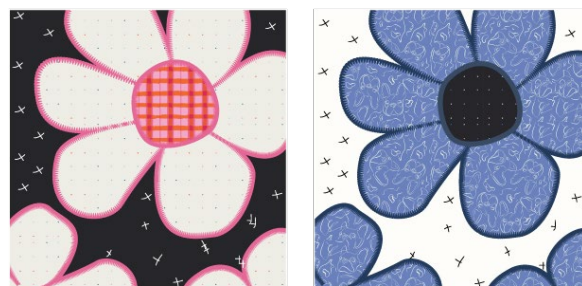


DIAGRAM 6

QUILT ASSEMBLY

Sew rights sides together.

- Take both 22" x 15" rectangles from fabric **C**.
- Fold one 22" edge $\frac{1}{2}$ " towards the wrong side of the fabric of each rectangle.
- Fold the same edge $\frac{1}{2}$ " again and edge stitch the fold in place to have a clean edge.
- Take the quilted pillow top and lay it flat right side up.
- Take one rectangle from fabric **C** and align it wrong side up to the top side of the pillow top.
- Take the other rectangle from fabric **C** and align it wrong side up to the bottom side of the pillow top.
- Pin the three pieces in place and sew around the edges at $\frac{1}{4}$ ".
- Clip the corners and flip the piece to the right side of the fabric.
- Fill the pillow with a pillow form and enjoy!

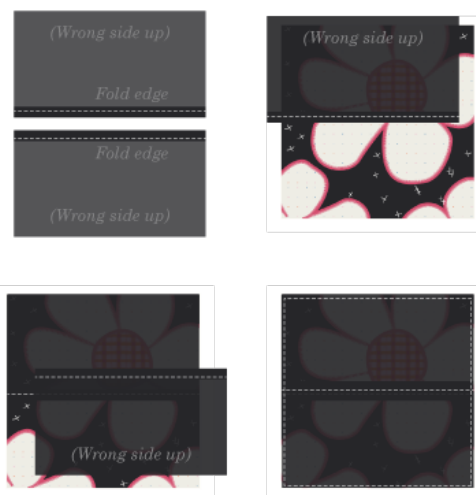


DIAGRAM 7

XXXXXXXXXXXXXXXXXXXXXXXXXXXX

*Congratulations
& enjoy*

XXXXXXXXXXXXXXXXXXXXXXXXXXXX



artgalleryfabrics.com

NOTE: While all possible care has been taken to ensure the accuracy of this pattern, We are not responsible for printing errors or the way in which individual work varies.

Please read instructions carefully before starting the construction of this quilt. If desired, wash and iron your fabrics before starting to cut.

© 2022 Courtesy of Art Gallery Quilts LLC. All Rights Reserved.

TEMPLATES

1" TEST SQUARE

