



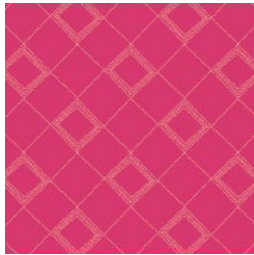
# Artsy Tote

DESIGNED BY *AGFstudio*



## ART DISTRICT FUSION

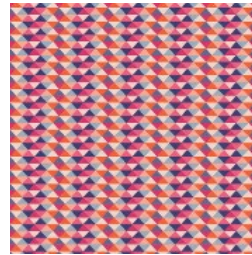
FABRICS DESIGNED BY AGF STUDIO



FUS-AD-1603  
TARTAN DISTRICT



FUS-AD-1606  
CITY SOUNDS DISTRICT



FUS-AD-1607  
TRIPIXELS DISTRICT



FUS-AD-1601  
WAVES OF ECHO DISTRICT

### ADDITIONAL BLENDERS FOR THIS PROJECT



PE-457  
DRIED CARROT



PE-441  
BLUEBERRY ZEST



PE-408  
WHITE LINEN



PE-473  
FLAMINGO



# Artsy Tote

FINISHED SIZE | 14" x 15"

## FABRIC REQUIREMENTS

Fabric <b>A</b>	FUS-AD-1603	¼ yd.
Fabric <b>B</b>	PE-457	⅜ yd.
Fabric <b>C</b>	FUS-AD-1606	F8.
Fabric <b>D</b>	FUS-AD-1607	F8.
Fabric <b>E</b>	PE-441	F8.
Fabric <b>F</b>	PE-408	F8.
Fabric <b>G</b>	FUS-AD-1601	⅝ yd.
Fabric <b>H</b>	PE-473	F8.
Fabric <b>I</b>	PE-498	½ yd.

### LINING FABRIC

Fabric **G** FUS-AD-1601 (Included)

## CUTTING DIRECTIONS

¼" seam allowances are included.  
WOF means width of fabric.

- One (1) template 1 from fabric **A**.
- One (1) 4½" square from fabric **A**.
- One (1) 14½" x 7½" rectangle from fabric **A** (drop in pocket).
- One (1) template 1 from fabric **B**.
- Three (3) templates 2 from fabric **B**.
- Two (2) 22" x 4" strips from fabric **B** (handles).
- One (1) 8½" x 3½" rectangle from fabric **C**.
- Two (2) templates 1 from fabric **D**.
- One (1) 3½" x 9½" rectangle from fabric **D**.
- One (1) 5½" x 4½" rectangle from fabric **E**.
- One (1) 3½" x 4½" rectangle from fabric **E**.
- One (1) 8½" x 2½" rectangle from fabric **F**.
- Two (2) 14½" x 15½" rectangles from fabric **G** (lining).

- Two (2) templates 2 from fabric **G**.
- One (1) 15½" x 1½" rectangle from fabric **G**.
- One (1) template 1 from fabric **H**.
- One (1) 15½" x 14½" rectangle from fabric **I** (back of tote).

## CONSTRUCTION

Sew all rights sides together with ¼" seam allowance.

- Join template 1 with template 2 matching the following fabric combinations:

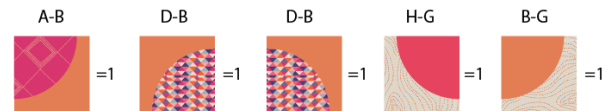


DIAGRAM 1

- Join one (1) **A-B** block, one (1) 4½" x 5½" rectangle from fabric **E** and one (1) **H-G** block following the diagram below.



DIAGRAM 2

- Take two (2) **D-B** blocks and join them following the diagram below.



DIAGRAM 3

- Join one (1) 4½" square from fabric **A** and one (1) **B-H** block following the diagram below.



DIAGRAM 4

- Take both assembled pieces from diagram 3 and 4, one (1) 8½" x 3½" rectangle from fabric **C**, one (1) 8½" x 2½" rectangle from fabric **F** and join them following the diagram below.



DIAGRAM 5

- Join one (1) 3½" x 9½" rectangle from fabric **D** and one (1) 3½" x 4½" rectangle from fabric **E** following the diagram below.



DIAGRAM 6

- Now, join the assembled rows from diagrams 2, 5 and 6 following the diagram below.

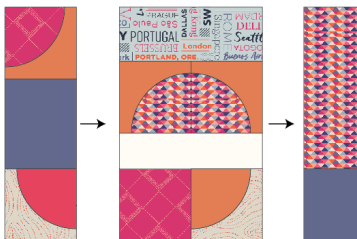


DIAGRAM 7

- Take one (1) 15½" x 1½" strip from fabric **G** and join it at the bottom of the assembled block.

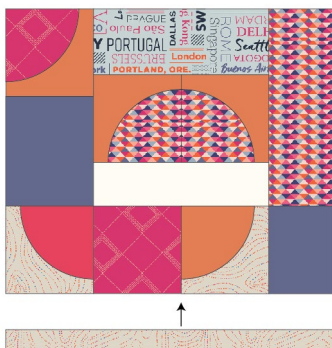


DIAGRAM 8

- Quilt as desired.
- Feel free to quilt the back of the tote as well.

## LINING & DROP IN POCKET

### Drop in pocket:

- Take the 14½" x 7½" rectangle from fabric **A**, which will be your drop in pocket, and fold it in half. (diagram 9.1).
- Sew right and left side edges at a ¼" seam allowance. Leave the bottom edge open and un-sewn. (diagram 9.2)
- Turn the pocket flap inside out. Press.
- Stitch a decorative line ¼" from the folded edge. This will ensure your lined drop-in pocket doesn't wrinkle or buckle during normal use (diagram 9.3)
- Line the bottom open edge of the drop-in pocket up with the marked line on the right side of the bag lining from fabric **G**. The top of the pocket should be pointing towards the bottom of the bag. (diagram 9.4). Pin.
- Sew one straight line along the bottom edge of the pocket.
- Flip the pocket up into its rightful place. Press. Edge-stitch the right and left sides of the pocket. Backstitch to lock the seams in place, at the beginning and end of each stitching line. (diagram 9.5)
- Divide the width of the pocket into 3 equal sections and mark these intervals with water soluble pen.
- Make a vertical stitching line through the pocket and lining fabric at each of the intervals. This will create 3 drop-in pockets. (diagram 9.6)

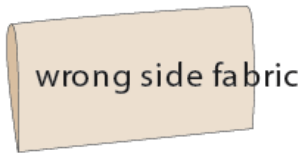
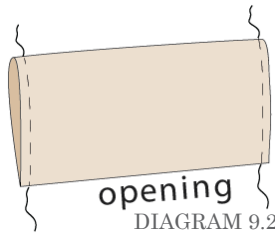


DIAGRAM 9.1



opening

DIAGRAM 9.2

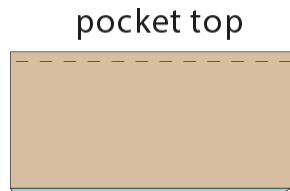


DIAGRAM 9.3

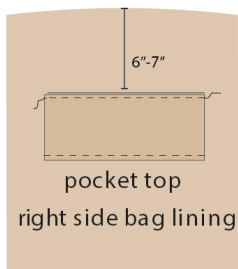


DIAGRAM 9.4

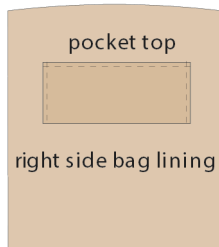


DIAGRAM 9.5

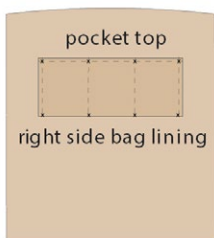


DIAGRAM 9.6

### Creating Boxed Corners

- Sew front and back tote with right sides together at ¼" seam allowance. Also sew the two lining pieces from fabric G together but leave a small unsewn portion at the bottom in order to pull right side of the bag through.
- We want to box the interior corners to get a really nice flat bottom on the bag; this way the tote bag will have more body.
- At the corners of the front and back of the tote, draw with an erasable pen a ½" square on the wrong side of the fabric. Repeat this process for your lining. (Diagram 10)
- Take the exterior of the bag (wrong side out) and pinch the two layers of the tote to get a little triangle on one corner. Flatten it down a little bit and make sure the top and bottom seams are lined up. Hold it tight.

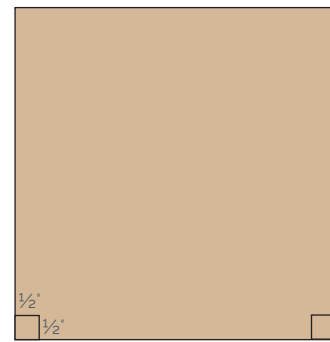


DIAGRAM 11

- Points of the squares you drew on each side of the tote should match up. Pin in place and stitch on the line. Repeat this for the other side of your tote as well as your lining pieces. (Diagram 12)

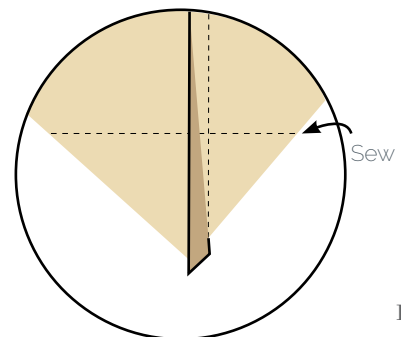


DIAGRAM 12

- Insert the main bag inside the lining body, so the right sides are facing together. Match all the seamlines and pin.
- Beginning at a side seam, stitch a  $\frac{1}{4}$ " seam almost all the way around the top of the tote.
- Pull both fabrics through the lining gap, turning the tote bag right-side out. Close the lining by hand or machine stitch.
- Top-stitch around the tote bag's entire opening to finish edges.

## Straps

- Take two (2) 22" x 4" strips from fabric **B**, and place fusible interfacing on the wrong side of the fabric.
- Fold the short edges  $\frac{1}{4}$ " in and top stitch.
- Fold the strips in half length wise to create a crease in the center.
- Open them and fold the edges towards the center crease.
- Fold the folded edges and top stitch.

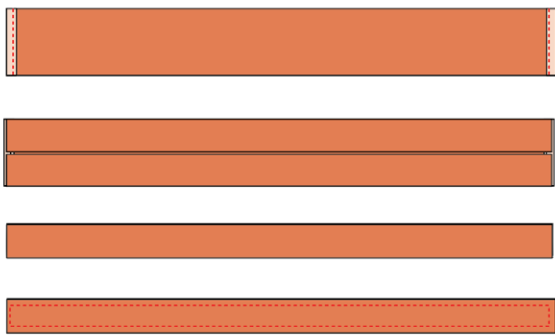


DIAGRAM 13

- Take one of the straps and measure about  $3\frac{1}{2}$ " from the side of the tote.
- Pin the strap and sew a  $1" \times 1\frac{1}{8}"$  rectangle to hold your strap in place .
- Repeat the same step on the other side and the other strap.
- Enjoy!



DIAGRAM 14

XX

Congratulations  
& enjoy

XX



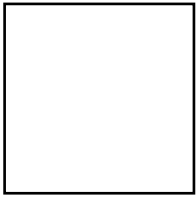
[artgalleryfabrics.com](http://artgalleryfabrics.com)

NOTE: While all possible care has been taken to ensure the accuracy of this pattern, We are not responsible for printing errors or the way in which individual work varies.

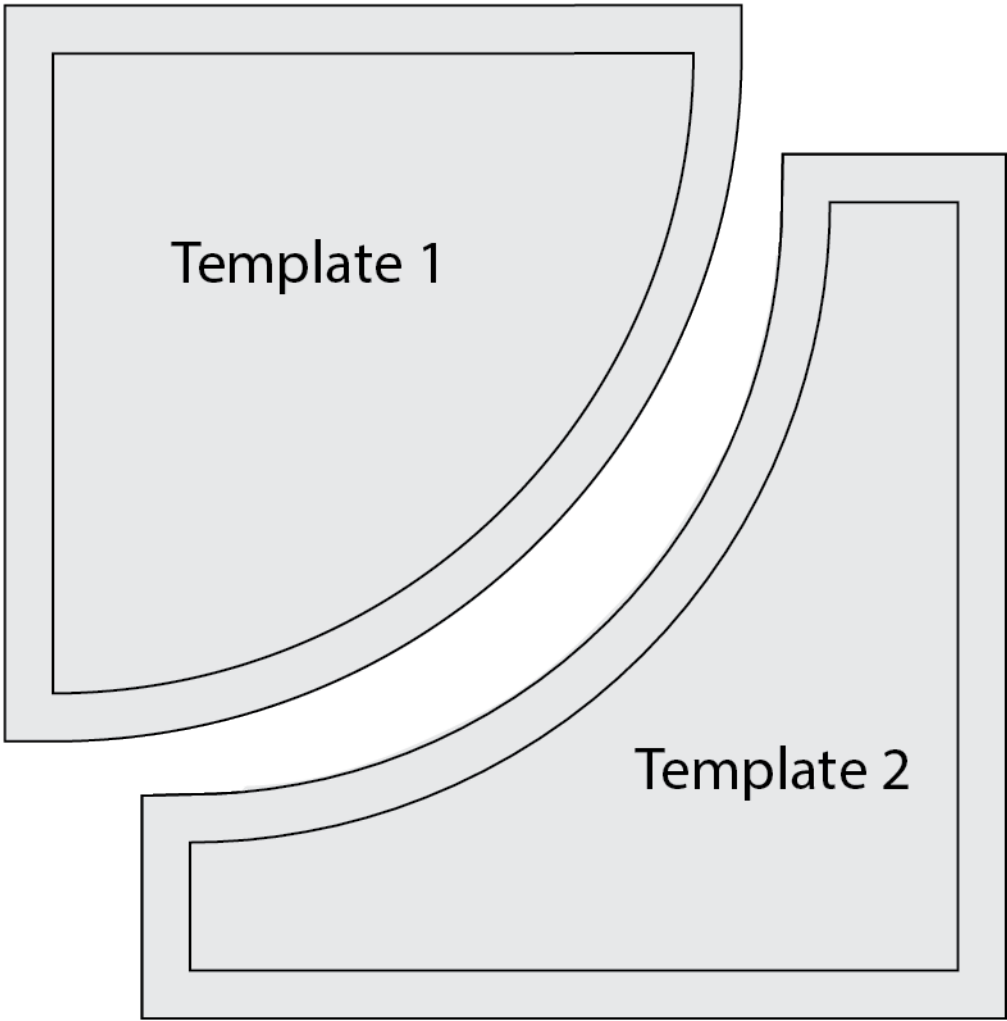
Please read instructions carefully before starting the construction of this quilt. If desired, wash and iron your fabrics before starting to cut.

TEMPLATES

Printer Test



1"  
Square



Template 1

Template 2