

X
X
X
X
X
X
X
X
X
X
X
X

A vibrant, quilted pillow with a complex geometric pattern of triangles and squares. The colors are primarily light blue, yellow, and white, with accents of darker blue and floral motifs. The pillow is resting on a dark blue towel on a sandy beach. In the foreground, a yellow object and a book are partially visible.

XXXXXXXXXXXXXXXXXXXXXXXXXXXXXXXXXXXXXXXXXXXXXXXXXXXXXXXXXXXX



Piastrelle

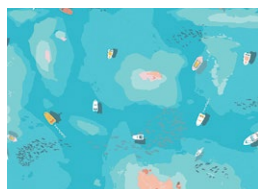
PILLOW

DESIGNED BY AGFstudio



Capri

FABRICS DESIGNED BY KATARINA ROCCELLA



CPR32779
REGATA



CPR327704
LUCCIOLE MARINE



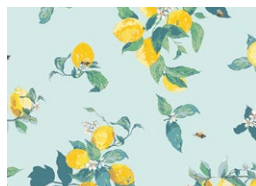
CPR42775
ALICI DI CETARA



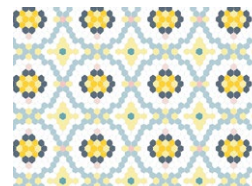
CPR42772
LIMONI PER GRANITA



CPR32771
PIASTRELLE SOLE



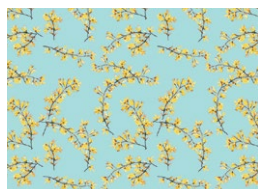
CPR32772
LIMONI PER LIMONCELLO



CPR42778
MOSAICO POMPEI



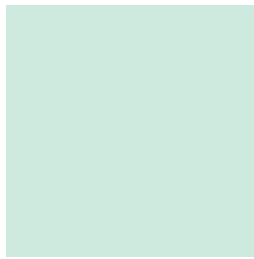
CPR42776
GINESTRA IN BELVEDERE



CPR32776
GINESTRA IN FARAGLIONI



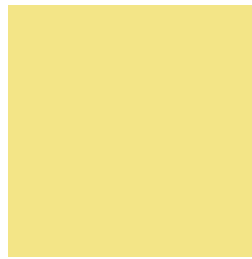
ADDITIONAL BLENDERS FOR THIS PROJECT



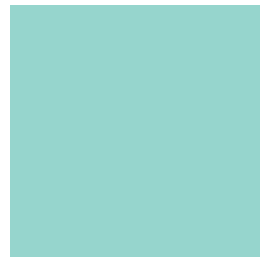
PE-451
ICY MINT



PE-418
TILE BLUE



PE-446
HONEYDEW



PE-403
FRESH WATER



FE-519
ICY BLUE



FINISHED SIZE | 24" x 24"

FABRIC REQUIREMENTS

| | | |
|-----------------|----------|-------------------|
| Fabric A | CPR32779 | F8. |
| Fabric B | CPR32774 | F8. |
| Fabric C | CPR42775 | $\frac{7}{8}$ yd. |
| Fabric D | CPR42772 | F8. |
| Fabric E | CPR32771 | F8. |
| Fabric F | CPR32772 | F8. |
| Fabric G | CPR42778 | F8. |
| Fabric H | CPR42776 | F8. |
| Fabric I | CPR32776 | F8. |
| Fabric J | PE-451 | F8. |
| Fabric K | PE-418 | F8. |
| Fabric L | PE-446 | F8. |
| Fabric M | PE-403 | F8. |
| Fabric N | FE-519 | F8. |

BACKING FABRIC

Fabric **C** CPR42775 (Included)

CUTTING DIRECTIONS

*$\frac{1}{4}$ " seam allowances are included.
WOF means width of fabric.*

- Five (5) $4\frac{1}{2}$ " squares from fabric **A**.
- Six (6) $3\frac{1}{2}$ " squares from fabric **B**.
- Two (2) 18" x 24" rectangles from fabric **C** (back of pillow).
- Ten (10) $3\frac{1}{2}$ " squares from fabric **C**.
- Four (4) $4\frac{1}{2}$ " squares from fabric **D**.
- Four (4) $3\frac{1}{2}$ " squares from fabric **E**.
- Five (5) $4\frac{1}{2}$ " squares from fabric **F**.
- Five (5) $4\frac{1}{2}$ " squares from fabric **G**.
- Four (4) $3\frac{1}{2}$ " squares from fabric **H**.
- Four (4) $4\frac{1}{2}$ " squares from fabric **I**.
- Five (5) $4\frac{1}{2}$ " squares from fabric **J**.
- Four (4) $3\frac{1}{2}$ " squares from fabric **K**.
- Four (4) $4\frac{1}{2}$ " squares from fabric **L**.
- Four (4) $3\frac{1}{2}$ " squares from fabric **L**.
- Four (4) $3\frac{1}{2}$ " squares from fabric **M**.
- Four (4) $4\frac{1}{2}$ " squares from fabric **N**.

XXXXXXXXXXXXXXXXXXXXXXXXXXXXXXXXXXXXXXXXXXXXXXXXXXXXXXXXXXXX

- Because fabric **B** is a directional fabric, please follow the instructions below for the fabric placement.

- Start by taking one (1) 4½" square from fabric **A** and one (1) 3½" square from fabric **B**.
- Place fabric **B** square right sides facing together on the top left corner of fabric **A** square.
- Draw a diagonal line from corner to corner.
- Sew at a ¼" seam allowance and trim excess fabric.

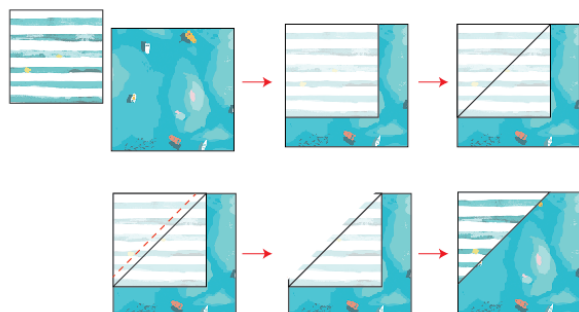


DIAGRAM 1

- Repeat the previous steps two (2) more times to have a total of three (3) BA block 1.

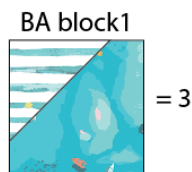


DIAGRAM 2

- Take another 4½" square from fabric **A** and one (1) 3½" square from fabric **B**.
- This time place fabric **B** square right sides facing together on the top right corner of fabric **A** square.
- Draw a diagonal line from corner to corner.
- Sew at a ¼" seam allowance and trim excess fabric.
- Repeat these steps again to have a total of two (2) **BA** block 2.

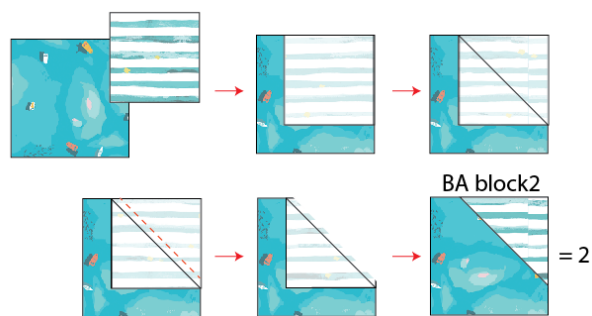


DIAGRAM 3

- Take one (1) 4½" square from fabric **G** and one (1) 3½" square from fabric **B** and repeat the same construction from **BA** block but this time place fabric **B** on the bottom right corner. This will be **BG** block 3.



DIAGRAM 4

- Take five (5) 4½" squares from fabric **J** and five (5) 3½" squares from fabric **C** and repeat the same construction following the placement of the 3½" square on the diagram below.
- You will have a total of five (5) **CJ** block 4.

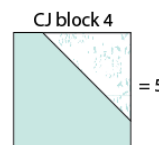


DIAGRAM 5

- Take five (5) 4½" squares from fabric **F** and five (5) 3½" squares from fabric **C** and repeat the same construction following the placement of the 3½" square on the diagram below.
- You will have a total of five (5) **CF** block 5.

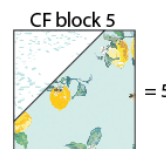


DIAGRAM 6

- Take four (4) $4\frac{1}{2}$ " squares from fabric **D** and four (4) $3\frac{1}{2}$ " squares from fabric **E** and repeat the same construction following the placement of the $3\frac{1}{2}$ " square on the diagram below.
- You will have a total of four (4) **ED** block 6.

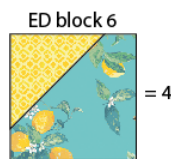


DIAGRAM 7

- Take four (4) $4\frac{1}{2}$ " squares from fabric **N** and four (4) $3\frac{1}{2}$ " squares from fabric **H** and repeat the same construction following the placement of the $3\frac{1}{2}$ " square on the diagram below.
- You will have a total of four (4) **HN** block 7.

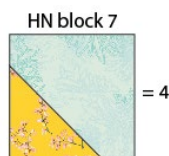


DIAGRAM 8

- Take four (4) $4\frac{1}{2}$ " squares from fabric **I** and four (4) $3\frac{1}{2}$ " squares from fabric **K** and repeat the same construction following the placement of the $3\frac{1}{2}$ " square on the diagram below.
- You will have a total of four (4) **KI** block 8.

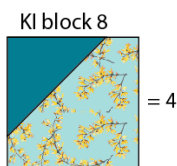


DIAGRAM 9

- Take four (4) $4\frac{1}{2}$ " squares from fabric **G** and four (4) $3\frac{1}{2}$ " squares from fabric **L** and repeat the same construction following the placement of the $3\frac{1}{2}$ " square on the diagram below.
- You will have a total of four (4) **LG** block 9.

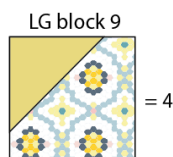


DIAGRAM 10

- Take four (4) $4\frac{1}{2}$ " squares from fabric **L** and four (4) $3\frac{1}{2}$ " squares from fabric **M** and repeat the same construction following the placement of the $3\frac{1}{2}$ " square on the diagram below.
- You will have a total of four (4) **ML** block 10.

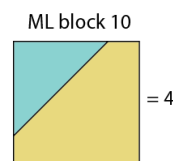


DIAGRAM 11

- Take all of your blocks and join them by rows following the diagram below.

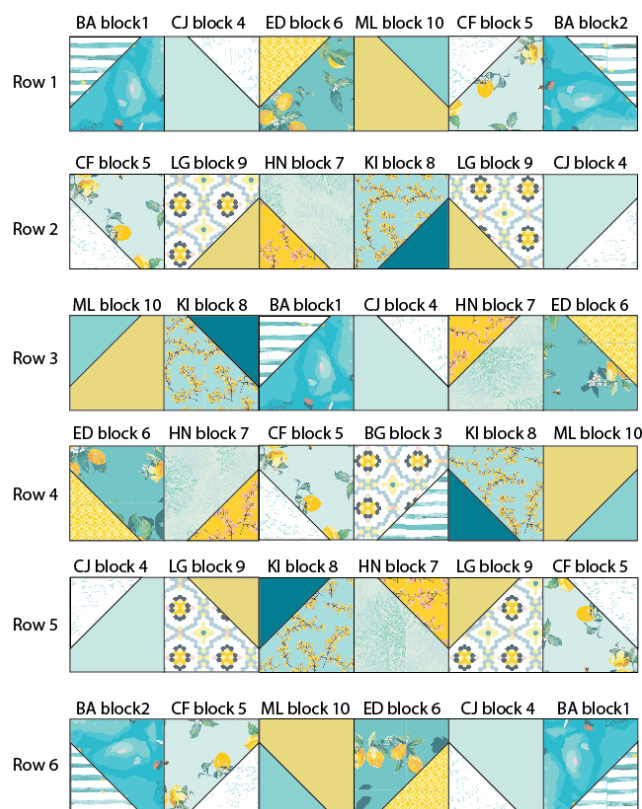
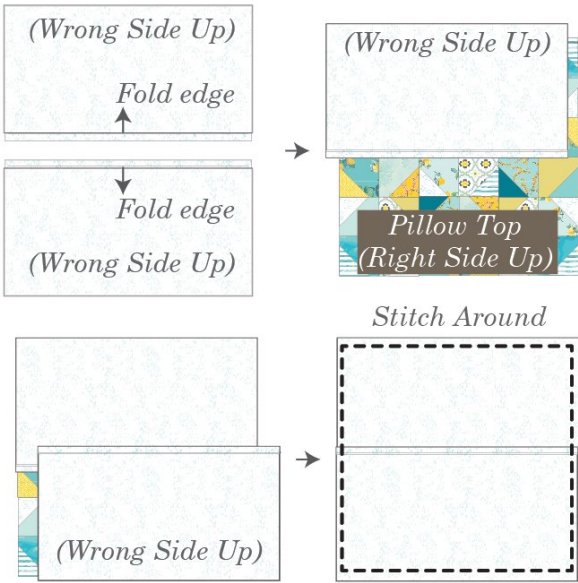


DIAGRAM 12

- Join rows 1-6.
- Quilt as desired.

BACK OF PILLOW

- Take both 24½" x 18" rectangles from fabric **C**.
- Fold one bottom edge ½" towards the wrong side of the fabric of one of the rectangle.
- Fold the same edge ½" again and edge stitch the fold in place to have a clean edge.
- Repeat the same for the top edge of the bottom piece.
- Take the quilted pillow top and lay it flat right side up.
- Take one rectangle from fabric **C** and align it wrong side up to the top side of the pillow top.
- Take the other rectangle from fabric **C** and align it wrong side up to the bottom side of the pillow top.
- Pin the three pieces in place and sew around the edges at ¼".
- Clip the corners and flip the piece to the right side of the fabric.
- Fill the pillow with a 24" x 24" pillow form and enjoy!



XXXXXXXXXXXXXXXXXXXXXXXXXXXXXXXXXXXX

*Congratulations
& enjoy*

XXXXXXXXXXXXXXXXXXXXXXXXXXXXXXXXXXXX



artgalleryfabrics.com

NOTE: While all possible care has been taken to ensure the accuracy of this pattern, We are not responsible for printing errors or the way in which individual work varies.

Please read instructions carefully before starting the construction of this quilt. If desired, wash and iron your fabrics before starting to cut.

© 2022 Courtesy of Art Gallery Quilts LLC. All Rights Reserved.