

## A collection of square, patterned fabric pouches in shades of orange and cream, arranged on a light-colored fabric surface. The pouches feature various designs including floral, geometric, and striped patterns. Two large, cylindrical, cream-colored candles are visible in the upper left corner, and a small sprig of dried flowers is on the right.

XXXXXXXXXXXXXXXXXXXXXXXXXXXX

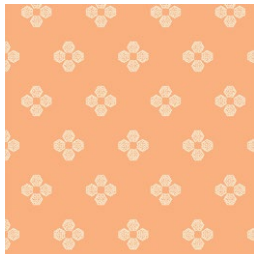


# Lavender Sachets



DESIGNED BY AGFstudio

## Nectarine FUSION



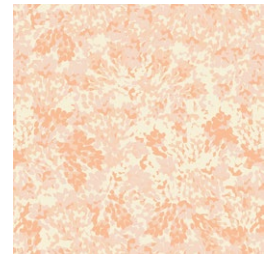
**FUS-NE-2409**  
DROPLET PETAL NECTARINE  
*by Pat Bravo*



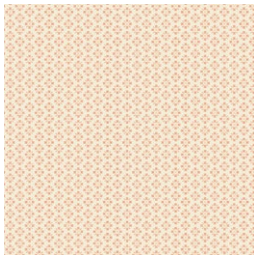
**FUS-NE-2403**  
DANCING LEAVES NECTARINE  
*by AGF Studio*



**FUS-NE-2400**  
BLOOMING SOUL NECTARINE  
*by Pat Bravo*



**FUS-NE-2407**  
EVERBLOOMING NECTARINE  
*by Bonnie Christine*



**FUS-NE-2404**  
ROYAL ARCADE NECTARINE  
*by Amy Sinbaldi*



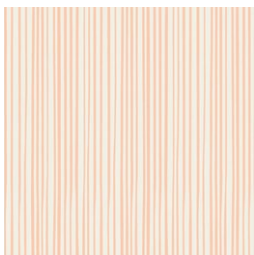
**FUS-NE-2402**  
WHISPERS INBLOOM NECTARINE  
*by AGF Studio*



**FUS-NE-2406**  
UNRULY TERRACE NECTARINE  
*by Bonnie Christine*



**FUS-NE-2405**  
FAINT CHARMS NECTARINE  
*by AGF Studio*



**FUS-NE-2408**  
STREAKLY BUSINESS NECTARINE  
*by AGF Studio*



**FUS-NE-2401**  
NESTED NECTARINE  
*by Bonnie Christine*





DEN-L-4000  
SOFT SAND

# Lavender Sachets

FINISHED SIZE | 4" x 4"

## FABRIC REQUIREMENTS

|                 |             |     |
|-----------------|-------------|-----|
| Fabric <b>A</b> | FUS-NE-2409 | F8. |
| Fabric <b>B</b> | FUS-NE-2403 | F8. |
| Fabric <b>C</b> | FUS-NE-2400 | F8. |
| Fabric <b>D</b> | FUS-NE-2407 | F8. |
| Fabric <b>E</b> | FUS-NE-2404 | F8. |
| Fabric <b>F</b> | FUS-NE-2402 | F8. |
| Fabric <b>G</b> | FUS-NE-2406 | F8. |
| Fabric <b>H</b> | FUS-NE-2405 | F8. |
| Fabric <b>I</b> | FUS-NE-2408 | F8. |
| Fabric <b>J</b> | FUS-NE-2401 | F8. |
| Fabric <b>K</b> | DEN-L-4000  | F8. |

## CUTTING DIRECTIONS

*¼" seam allowances are included.  
WOF means width of fabric.*

- One (1) 3½" squares from fabrics **A, B, C, D, E, F, G, H, I, J.**
- Twenty (20) 4½" squares from fabric **K.**

## CONSTRUCTION

*Sew all rights sides together with ¼"seam allowance.*

- Take one (1) 4½" square from fabric **K** and one (1) 3½" square from fabric **A.**
- Place fusible interfacing on the wrong side of fabric **K.**
- Cut a 3" square from steam a seam and place it on the wrong side of fabric **A.**
- Then, place the 3½" square from fabric **A** on top of fabric **K**, wrong side facing down.
- Edge stitch fabric **A** with a blanket stitch or any desired stitching. Press your piece.

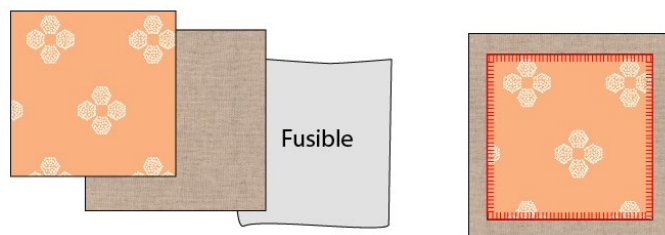


DIAGRAM 1

- Now, take one (1) 4½" square from fabric **K** and place it right sides facing together. Sew all around leaving about 3" of opening.

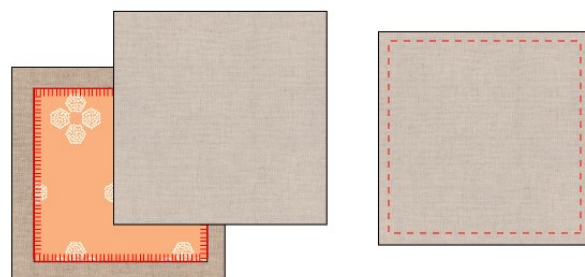
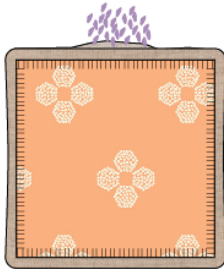


DIAGRAM 2

- Clip your corners and flip the piece inside out. Press and stuff the sachet with lavender filling.
- Edge stitch the opening or close by hand.
- Repeat the same for the remaining sachets and stock them on your sock drawers or give them as gifts!



XXXXXXXXXXXXXXXXXXXXXXXXXXXX

*Congratulations  
& enjoy*

XXXXXXXXXXXXXXXXXXXXXXXXXXXX



[artgalleryfabrics.com](http://artgalleryfabrics.com)

NOTE: While all possible care has been taken to ensure the accuracy of this pattern, We are not responsible for printing errors or the way in which individual work varies.

Please read instructions carefully before starting the construction of this quilt. If desired, wash and iron your fabrics before starting to cut.

© 2022 Courtesy of Art Gallery Quilts LLC. All Rights Reserved.