

Winona

MAKE UP BAG



FREE PATTERN

XXXXXXXXXXXXXXXXXXXXXXXXXXXX

XXXXXXXXXXXXXXXXXXXX

Winona

MAKE UP BAG

DESIGNED BY AGFstudio



HEH-52782
MARRELLS SECRET GARDEN

by Bonnie Christine



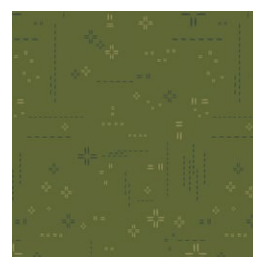
FE-517
SUNSET

by AGF studio



HEH-52781
ETHEL'S VINTAGE

by Bonnie Christine



DSE-705
MORNING-MOSS

by AGF studio



PIC-39453
LUSH MIMOSA

by Katarina Roccella



GTH-37505
SWEET HARVEST OLIVE

by Bonnie Christine



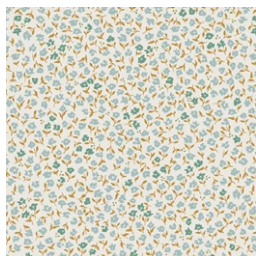
GTH-37509
SIMPLE-LIVING

by Bonnie Christine



FE-525
TANGERINE

by AGF studio



MAF-79206
PROMENADE MINT

Amy Sinibaldi



Winona

MAKE UP BAG

FINISHED SIZE | 9½" x 5½"

FABRIC REQUIREMENTS

Fabric A	HEH-52782	Fat 8.
Fabric B	FE-517	Fat 8.
Fabric C	HEH-52781	Fat 8.
Fabric D	DSE-705	Fat 8.
Fabric E	PIC-39453	Fat 8.
Fabric F	GTH-37505	Fat 8.
Fabric G	GTH-37509	Fat 8.
Fabric H	FE-525	Fat 8.
Fabric I	MAF-79206	Fat 8.

EXTRA MATERIALS
10" zipper
Wash Cloth

CUTTING DIRECTIONS

*¼" seam allowances are included.
WOF means width of fabric.*

- Fourteen (14) templates #1 from fabric **A**.
- Nineteen (19) templates #1 from fabric **B**.
- Sixteen (16) templates #1 from fabric **C**.
- Twenty-four (24) templates #1 from fabric **D**.
- Eleven (11) templates #1 from fabric **E**.
- Eight (8) templates #1 from fabric **F**.
- Twelve (12) templates #1 from fabric **G**.
- Fourteen (14) templates #1 from fabric **H**.
- Two (2) 10" x 6" rectangles from fabric **I**.

CONSTRUCTION

Sew all rights sides together with ¼" seam allowance.

- Start with the construction of the rows needed for the exterior pieces.
- Attach seven (7) templates together for each row following the diagrams below for fabrics placement.

ROW #1

A-D-C-E-B-A-G



ROW #2

H-D-F-E-D-A-B



ROW #3

H-G-F-C-D-C-B



ROW #4

B-G-D-C-B-C-H



ROW #5

B-A-D-C-B-F-H



ROW #6

D-A-E-H-G-F-D



ROW #7

D-C-E-B-G-A-D



DIAGRAM 1

- Attach the rows together from 1-7.



DIAGRAM 2

- Make a total of two (2) for the exterior of the make up bag.



DIAGRAM 3

- Use some batting to quilt the exterior pieces as desired and trim them to 10" x 6".



DIAGRAM 4

ASSEMBLING THE BAG

- Bring two (2) 10" x 6" rectangles from fabric for your lining pieces, exterior pieces and zipper.
- Insert your zipper foot.
- Take the 10" zipper and sandwich it in between your lining and exterior fabric, pin it to hold it together.
- Sew the two pieces of fabric with right sides together with the zipper sandwiched in between the two pieces.
- Press fabric away from zipper and edge stitch the seam allowance to the lining sewing as close the edge as possible.
- Repeat the same process for the other side of the zipper using your other lining piece and exterior piece.

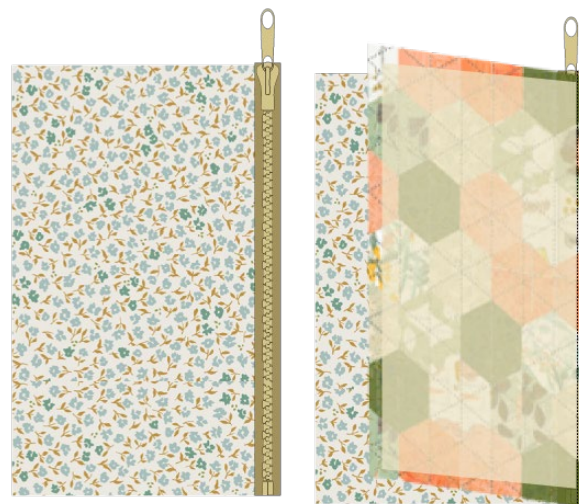


DIAGRAM 4

- Unzip zipper.
- Take the exterior fabrics pieces and pin right sides together.
- Take the lining pieces and pin right sides together.
- Sew all the way around leaving a 3" opening on the bottom of the lining to turn the bag inside out.
- Pull right side of the fabric through the unsewn- portion. Hand stitch or machine stitch the unsewn portion to close it.
- Voila!



DIAGRAM 5

MAKE UP CLEANSING SHEETS

- Use your remaining pieces to start with the construction of the rows needed for the exterior pieces.
- There are two different cleansing sheets follow the diagrams below for fabrics placement for each one of them.

Sheet #1:



Sheet #2:

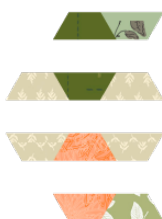


DIAGRAM 6

- Attach the rows together and use your hexie template to cut on a hexie on top of the previous made pieces as shown in the diagram below.

Sheet #1:



Sheet #2:



DIAGRAM 7

- Take a scrap of fabric bigger than the hexagon and some batting, sandwich the batting in between the hexagon and quilt.
- Trim the excess fabric and batting.



DIAGRAM 8

- After you are done quilting, cut one (1) hexagon template from the terry cloth.
- Place the quilted hexagon on top of the terry cloth, right side of terry cloth facing the patchy side of the hexagon.
- Sew all the way around leaving an opening wide enough to turn it inside out.
- Top stitch, voila!

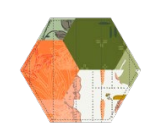


DIAGRAM 9

XXXXXXXXXXXXXXXXXXXXXXXXXXXXXXXXXXXX

*Congratulations
& enjoy*

XXXXXXXXXXXXXXXXXXXXXXXXXXXXXXXXXXXX



artgalleryfabrics.com

NOTE: While all possible care has been taken to ensure the accuracy of this pattern, We are not responsible for printing errors or the way in which individual work varies.

Please read instructions carefully before starting the construction of this quilt. If desired, wash and iron your fabrics before starting to cut.

TEMPLATES

1" Test Square

