

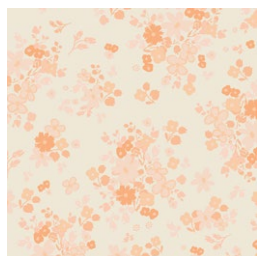
Sweet Peach

WALL ART

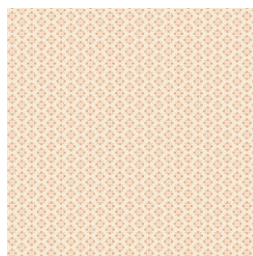
DESIGNED BY AGFstudio



Nectarine FUSION



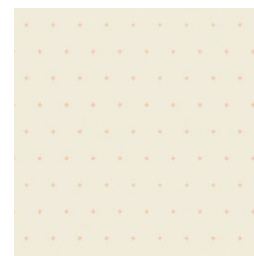
FUS-NE-2400
BLOOMING SOUL NECTARINE
by Pat Bravo



FUS-NE-2404
ROYAL ARCADE NECTARINE
by Amy Sinibaldi



FUS-NE-2401
NESTED NECTARINE
by Bonnie Christine

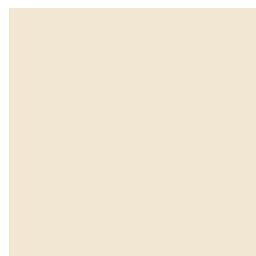


FUS-NE-2405
FAINT CHARMS NECTARINE
by AGF Studio

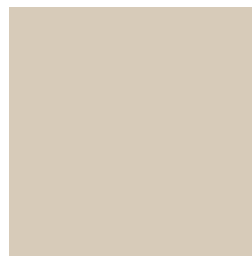
ADDITIONAL BLENDERS FOR THIS PROJECT



PE-444
PEACH SHERBET



PE-436
CREME DE LA CREME



PE-432
SANDSTONE



Sweet Peach

WALL ART

FINISHED SIZE | 18" x 34"

FABRIC REQUIREMENTS

Fabric A	FUS-NE-2400	¼ yd.
Fabric B	FUS-NE-2404	¼ yd.
Fabric C	FUS-NE-2401	¼ yd.
Fabric D	FUS-NE-2405	⅞ yd.
Fabric E	PE-444	¼ yd.
Fabric F	PE-436	¼ yd.
Fabric G	PE-432	¼ yd.

BACKING FABRIC
FUS-NE-2405 (Included)

CUTTING DIRECTIONS

¼" seam allowances are included.
WOF means width of fabric.

- Two (2) template 1 from fabric **A**.
- Two (2) template 2 from fabric **A**.
- Three (3) template 1 from fabric **B**.
- One (1) template 2 from fabric **B**.
- One (1) template 1 from fabric **C**.
- Three (3) template 2 from fabric **C**.
- One (1) 37" x 18½" rectangle from fabric **D**.
- One (1) 18½" x 5" rectangle from fabric **D**.
- One (1) 18½" x 2½" rectangle from fabric **D**.
- Four (4) template 1 from fabric **D**.
- One (1) template 2 from fabric **D**.

- Three (3) template 1 from fabric **E**.
- Three (3) template 2 from fabric **E**.
- One (1) template 1 from fabric **F**.
- Two (2) template 2 from fabric **F**.
- One (1) template 1 from fabric **G**.
- Three (3) template 2 from fabric **G**.

CONSTRUCTION

Sew all rights sides together with ¼" seam allowance.

- Join template 1 and 2 with the following fabric combinations:

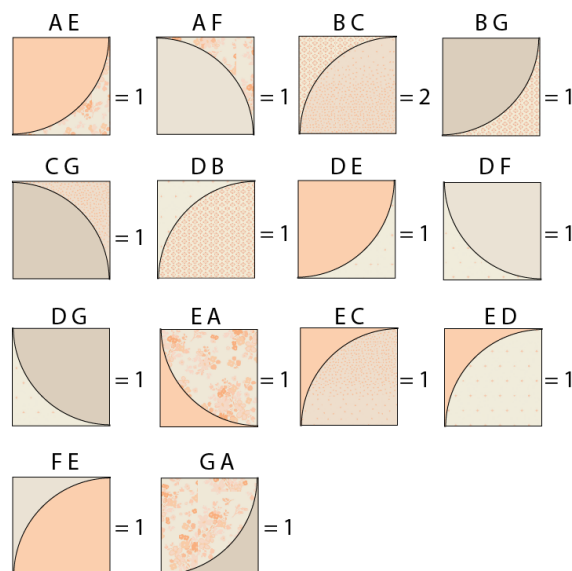


DIAGRAM 1

- Now, join each piece by rows following the diagram below.

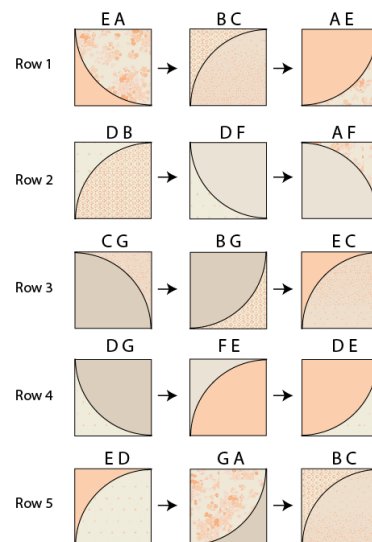


DIAGRAM 2

- Join rows 1-5.

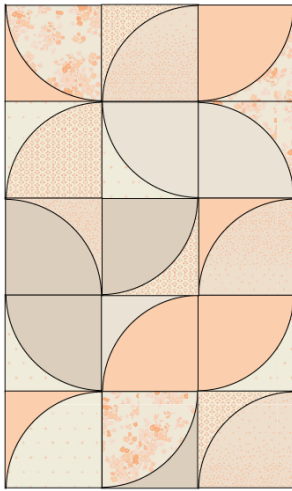


DIAGRAM 3

- Take one (1) $18\frac{1}{2}$ " x $2\frac{1}{2}$ " rectangle from fabric **D** and join it on the bottom of the wall art piece.

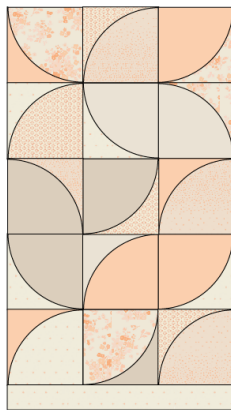


DIAGRAM 4

- Join one (1) $18\frac{1}{2}$ " x 5" rectangle from fabric **D** on the top part of your wall art piece.
- Quilt your piece as desired.

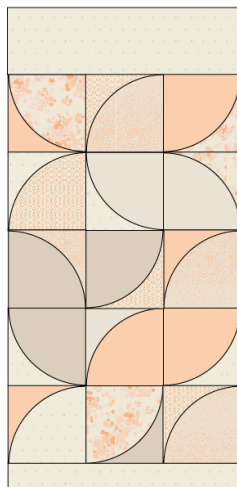


DIAGRAM 5

- Now, take the 37 " x $18\frac{1}{2}$ " backing piece from fabric **D** and place it right sides facing.
- Sew all around leaving a 3"- 4" opening.

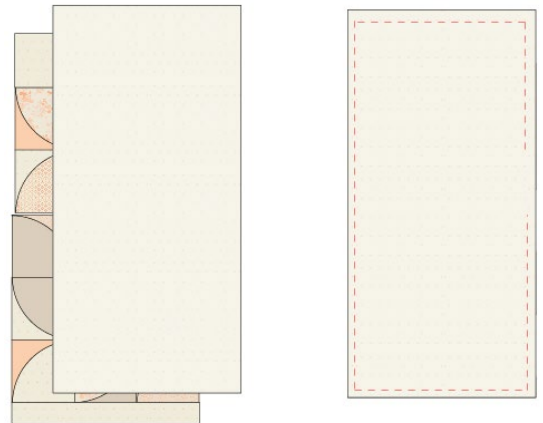


DIAGRAM 6

- Flip your piece inside out, close the opening with machine or hand stitch. Press.
- Fold the top part in half creating a loop towards the back until it measures about 2" on the front.

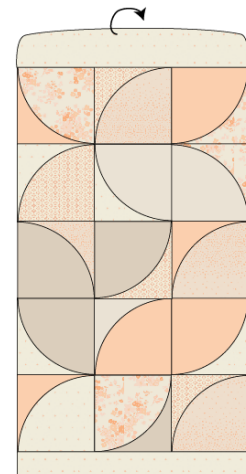


DIAGRAM 7

- Take thread and needle and bind stitch with the backing creating your loop.

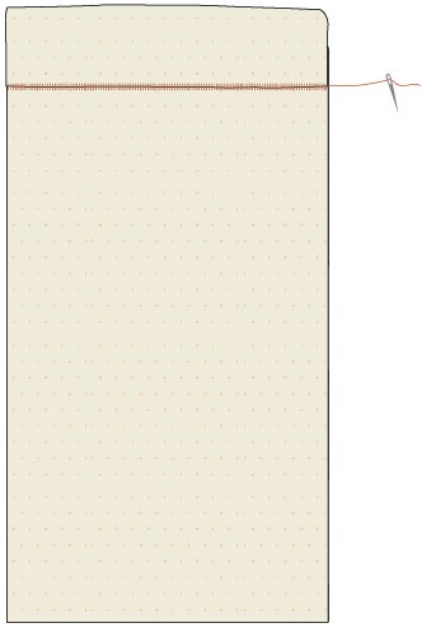


DIAGRAM 8

- Enjoy!!!

XXXXXXXXXXXXXXXXXXXXXXXXXXXXXXXXXXXX

*Congratulations
& enjoy*

XXXXXXXXXXXXXXXXXXXXXXXXXXXXXXXXXXXX



artgalleryfabrics.com

NOTE: While all possible care has been taken to ensure the accuracy of this pattern, We are not responsible for printing errors or the way in which individual work varies.

Please read instructions carefully before starting the construction of this quilt. If desired, wash and iron your fabrics before starting to cut.

© 2022 Courtesy of Art Gallery Quilts LLC. All Rights Reserved.

Template 1

1" Square

