

XXXXXX

by AGF

XXXXXXXXXXXXXXXXXXXX

Peach of mind

QUILT DESIGNED BY AGFstudio



Nectarine FUSION



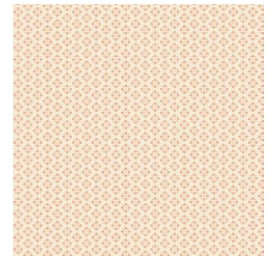
FUS-NE-2402
WHISPERS INBLOOM NECTARINE
by AGF Studio



FUS-NE-2405
FAINT CHARMS NECTARINE
by AGF Studio



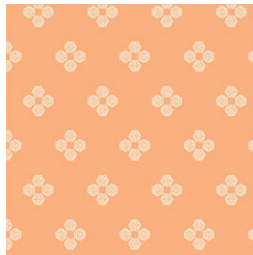
FUS-NE-2403
DANCING LEAVES NECTARINE
by AGF Studio



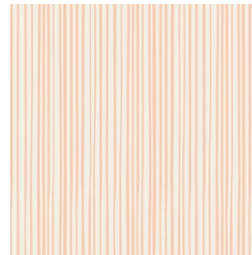
FUS-NE-2404
ROYAL ARCADE NECTARINE
by Amy Sinbaldi



FUS-NE-2406
UNRULY TERRACE NECTARINE
by Bonnie Christine



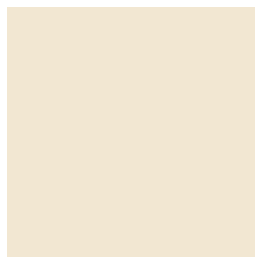
FUS-NE-2409
DROPLET PETAL NECTARINE
by Pat Bravo



FUS-NE-2408
STREAKLY BUSINESS NECTARINE
by AGF Studio



ADDITIONAL BLENDERS FOR THIS PROJECT



PE-436
CREME DE LA CREME



PE-444
PEACH SHERBET



FINISHED SIZE | 68" x 77"

FABRIC REQUIREMENTS

| | | |
|-----------------|-------------|---------------------|
| Fabric A | FUS-NE-2402 | 2 $\frac{1}{8}$ yd. |
| Fabric B | FUS-NE-2405 | 1 $\frac{3}{4}$ yd. |
| Fabric C | FUS-NE-2403 | 1 $\frac{1}{2}$ yd. |
| Fabric D | PE-436 | 1 $\frac{1}{4}$ yd. |
| Fabric E | FUS-NE-2404 | 1 yd. |
| Fabric F | PE-444 | $\frac{3}{4}$ yd. |
| Fabric G | FUS-NE-2406 | $\frac{1}{2}$ yd. |
| Fabric H | FUS-NE-2409 | $\frac{1}{4}$ yd. |
| Fabric I | FUS-NE-2408 | $\frac{3}{8}$ yd. |

BACKING FABRIC

FUS-NE-2403 5 yds (*Suggested*)

BINDING FABRIC

Fabric **I** FUS-NE-2408 (*Included*)

CUTTING DIRECTIONS

$\frac{1}{4}$ " seam allowances are included.

WOF means width of fabric.

- Twenty eight (28) 16 $\frac{1}{2}$ " x 2 $\frac{1}{2}$ " rectangles from fabric **A**.
- Twenty eight (28) 14 $\frac{1}{2}$ " x 2 $\frac{1}{2}$ " rectangles from fabric **A**.
- Twenty eight (28) 14 $\frac{1}{2}$ " x 2 $\frac{1}{2}$ " rectangles from fabric **B**.
- Twenty eight (28) 12 $\frac{1}{2}$ " x 2 $\frac{1}{2}$ " rectangles from fabric **B**.
- Twenty eight (28) 12 $\frac{1}{2}$ " x 2 $\frac{1}{2}$ " rectangles from fabric **C**.
- Twenty eight (28) 10 $\frac{1}{2}$ " x 2 $\frac{1}{2}$ " rectangles from fabric **C**.
- Twenty eight (28) 10 $\frac{1}{2}$ " x 2 $\frac{1}{2}$ " rectangles from fabric **D**.
- Twenty eight (28) 8 $\frac{1}{2}$ " x 2 $\frac{1}{2}$ " rectangles from fabric **D**.
- Twenty eight (28) 8 $\frac{1}{2}$ " x 2 $\frac{1}{2}$ " rectangles from fabric **E**.
- Twenty eight (28) 6 $\frac{1}{2}$ " x 2 $\frac{1}{2}$ " rectangles from fabric **E**.
- Twenty eight (28) 6 $\frac{1}{2}$ " x 2 $\frac{1}{2}$ " rectangles from fabric **F**.
- Twenty eight (28) 4 $\frac{1}{2}$ " x 2 $\frac{1}{2}$ " rectangles from fabric **F**.
- Twenty eight (28) 4 $\frac{1}{2}$ " x 2 $\frac{1}{2}$ " rectangles from fabric **G**.
- Twenty eight (28) 2 $\frac{1}{2}$ " squares from fabric **G**.
- Twenty eight (28) 2 $\frac{1}{2}$ " squares from fabric **H**.

CONSTRUCTION

Sew all rights sides together with 1/4" seam allowance.

- Follow the diagram below for the log cabin block construction.
- You will assemble a total of (28).

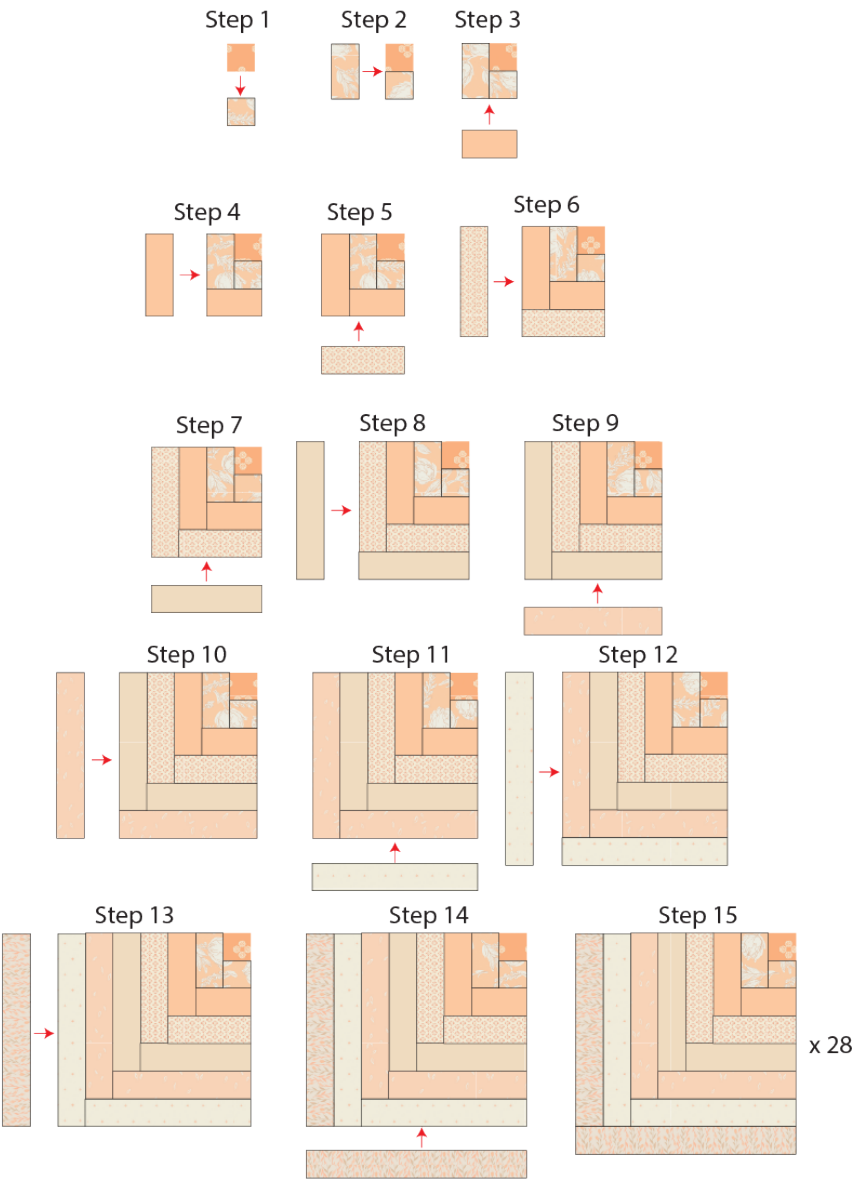
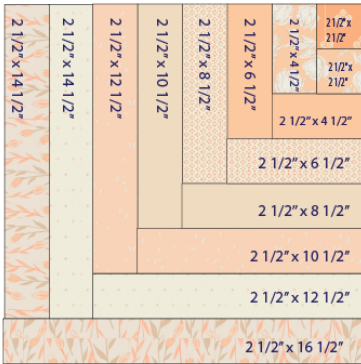


DIAGRAM 1

- Sew rows 1-7 following the diagram below.

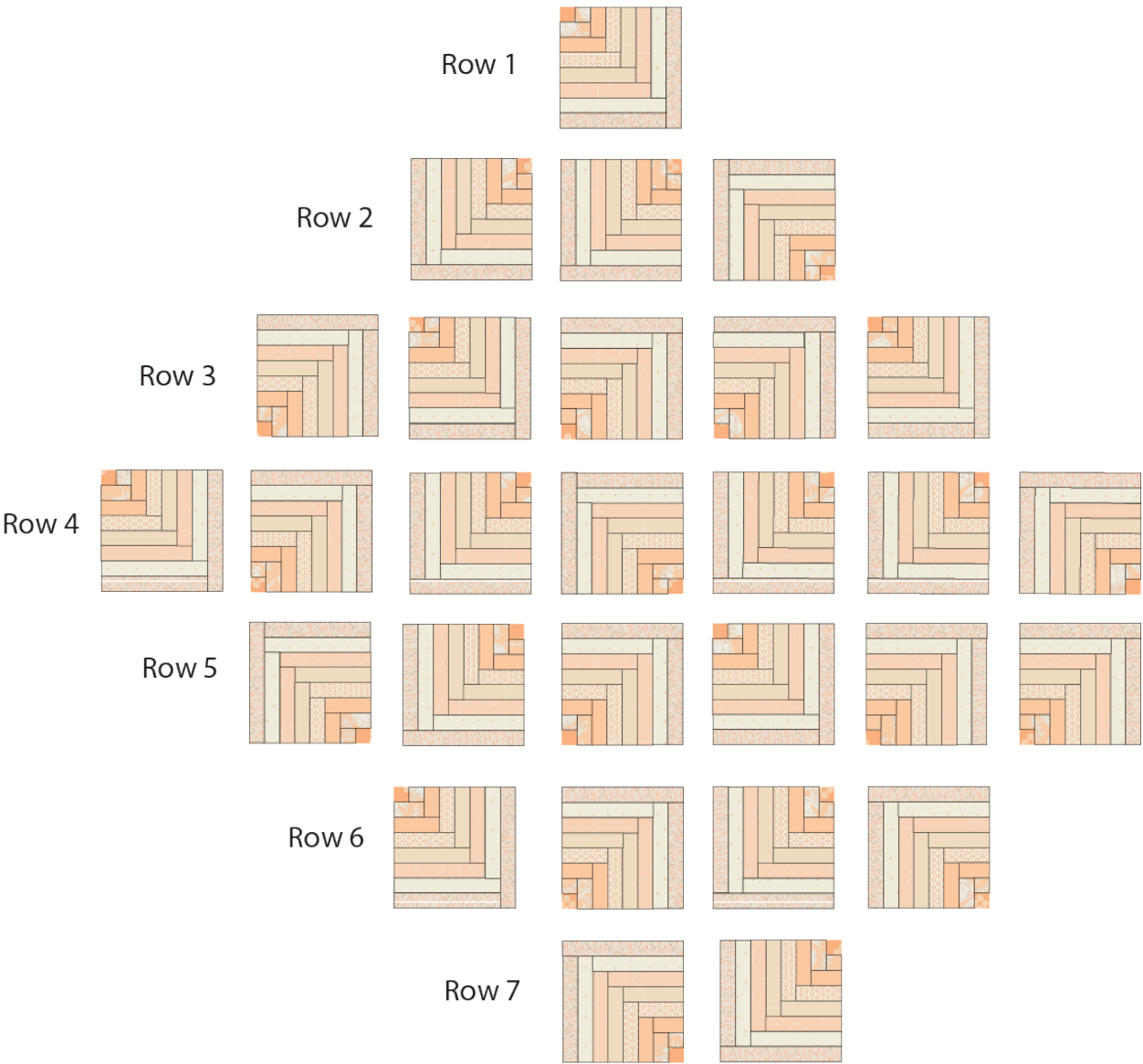


DIAGRAM 2

- Trim the quilt to 68" x 77".

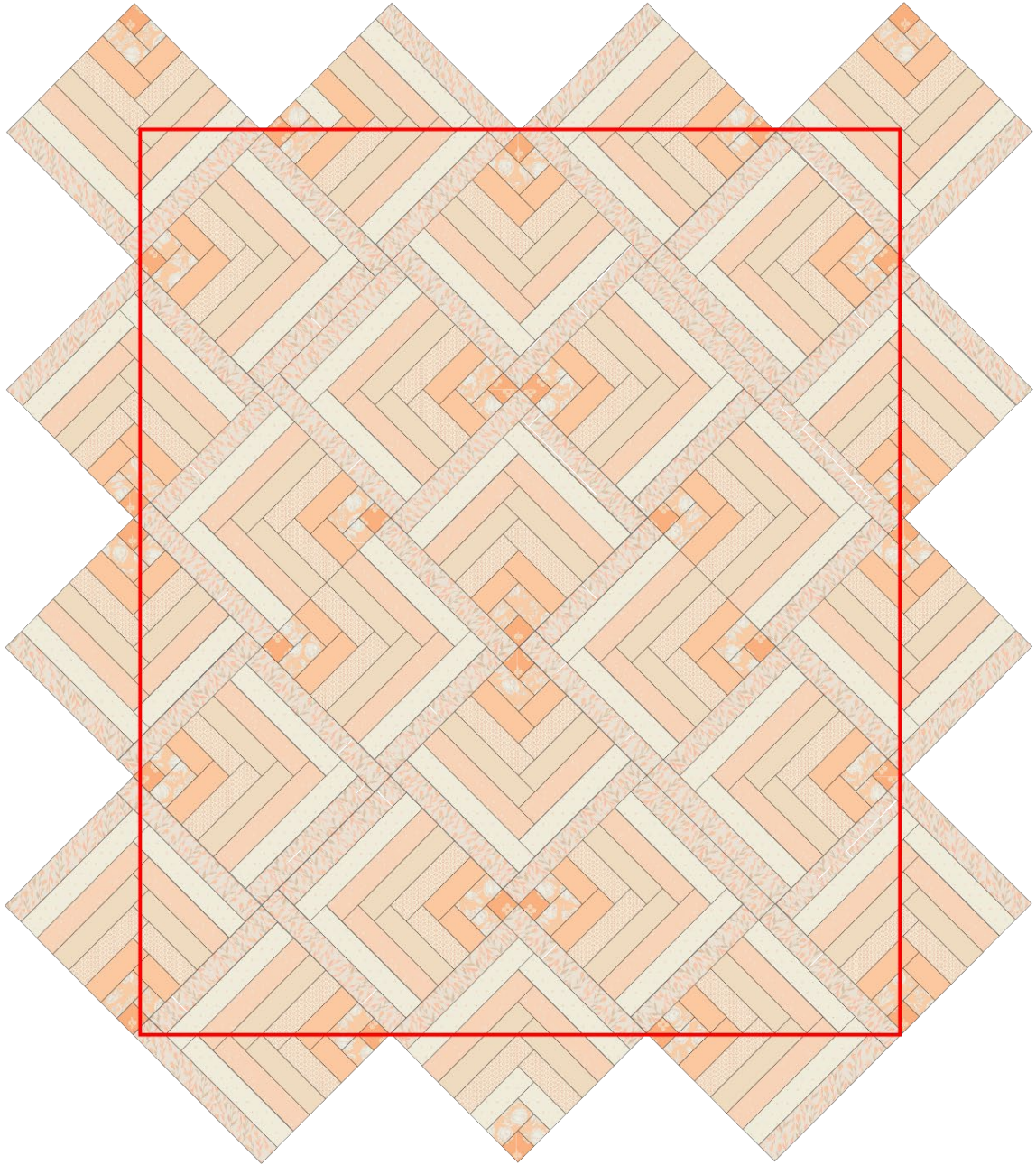


DIAGRAM 3

QUILT ASSEMBLY

Sew rights sides together.

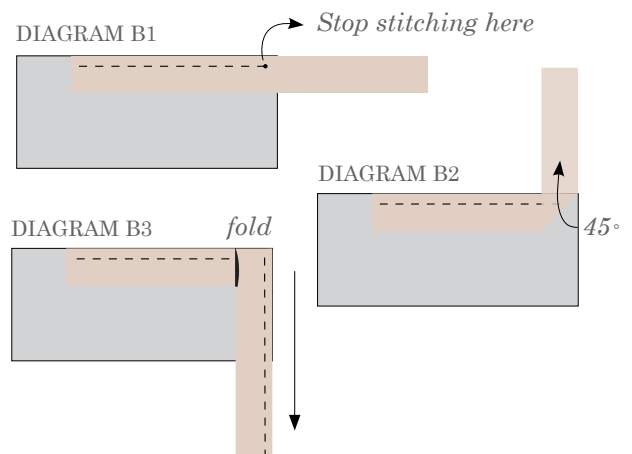
- Place BACKING FABRIC on a large surface wrong side up. Stretch it with masking tape against that surface.
- Place BATTING on top of backing fabric.
- Place TOP on top of the batting with right side facing up. Smooth away wrinkles using your hands.
- Pin all layers together and baste with basting thread, using long stitches. You can also use safety pins to join the layers.
- Machine or hand quilt starting at the center and working towards the corners. Remember that quilting motifs are a matter of personal preference. Have fun choosing yours!
- After you finished, trim excess of any fabric or batting, squaring the quilt to proceed to bind it.

- Stop stitching before you reach the last 5 or 6 inches. Cut the threads and remove the quilt from under the machine presser foot. Lay the loose ends of the binding flat along the quilt edge, folding the ends back on themselves where they meet. Press them together to form a crease. Using this crease as the stitching line, sew the two open ends of the binding with right sides together (you can help yourself marking with a pencil if the crease is difficult to see).
- Trim seam to $\frac{1}{4}$ " and press open. Complete the sewing. Turn binding to back of the quilt, turn raw edge inside and stitch by hand using blind stitch.

BINDING

Sew rights sides together.

- Cut enough strips $1\frac{1}{2}$ " wide by the width of the fabric to make a final strip 293" long. Start sewing the binding strip in the middle of one of the sides of the quilt, placing the strip right side down and leaving an approximated 5" tail. Sew with $\frac{1}{4}$ " seam allowance (using straight stitch), aligning the strip's raw edge with the quilt top's raw edge.
- Stop stitching $\frac{1}{4}$ " before the edge of the quilt (DIAGRAM B 1). Clip the threads. Remove the quilt from under the machine presser foot. Fold the strip in a motion of 45° and upward, pressing with your fingers (DIAGRAM B2). Hold this fold with your finger, bring the strip down in line with the next edge, making a horizontal fold that aligns with the top edge of the quilt (DIAGRAM B3). Start sewing at $\frac{1}{4}$ " of the border, stitching all the layers. Do the same in the four corners of the quilt.



XXXXXXXXXXXXXXXXXXXXXXXXXXXX

*Congratulations
& enjoy*

XXXXXXXXXXXXXXXXXXXXXXXXXXXX



artgalleryfabrics.com

NOTE: While all possible care has been taken to ensure the accuracy of this pattern, We are not responsible for printing errors or the way in which individual work varies.

Please read instructions carefully before starting the construction of this quilt. If desired, wash and iron your fabrics before starting to cut.

© 2022 Courtesy of Art Gallery Quilts LLC. All Rights Reserved.