

XXXXXX

## A close-up photograph of a quilted pillow. The pillow features a complex geometric pattern composed of various fabric pieces. The primary colors are pink, white, and dark blue. The pattern includes solid colors, stripes, and geometric shapes like diamonds and squares. A prominent yellow square is visible in the center. The quilted lines are visible, creating a textured, three-dimensional effect. The pillow is resting on a dark, textured surface.

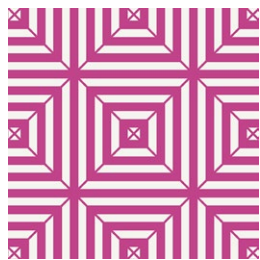
XXXXXXXXXXXXXXXXXXXXXXXXXXXX

# Lines & Diamonds



cityloft FUSION

FABRICS DESIGNED BY AGF STUDIO

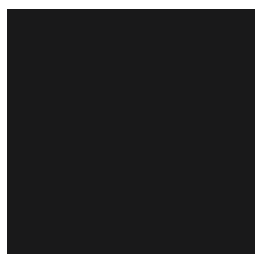


FUS-CL-905  
OPTICAL CITY

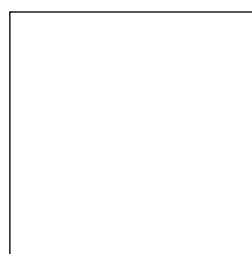
## ADDITIONAL BLENDERS FOR THIS PROJECT



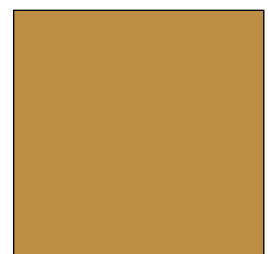
PE-401  
VERVE VIOLET



PE-413  
CAVIAR



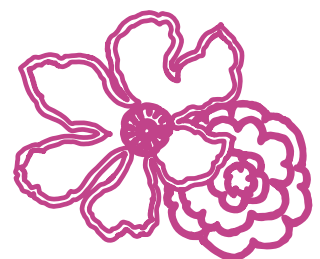
PE-433  
SNOW



PE-421  
HONEY



PE-428  
NOCTURNAL



FEEL THE DIFFERENCE © 2017 Courtesy of Art Gallery Quilts LLC. All Rights Reserved.



# Lines & Diamonds

FINISHED SIZE | 14½" x 14½"

## FABRIC REQUIREMENTS

Fabric <b>A</b>	FUS-CL-905	¼ yd.
Fabric <b>B</b>	PE-401	⅛ yd.
Fabric <b>C</b>	PE-413	⅛ yd.
Fabric <b>D</b>	PE-433	⅛ yd.
Fabric <b>E</b>	PE-421	⅛ yd.
Fabric <b>F</b>	PE-428	⅝ yd.

BACKING OF PILLOW  
PE-428- (Included)

## CUTTING DIRECTIONS

¼" seam allowances are included.

- Twenty four (24) 2½" squares from fabric **A**.
- Five (5) 2½" squares from fabric **B**.
- Eight (8) 2½" squares from fabric **C**.
- Eight (8) 2½" squares from fabric **D**.
- Three (3) 2½" squares from fabric **E**.
- Two (2) 24½" x 1¼" rectangles from fabric **F**.
- One (1) 20½" x 1¼" rectangle from fabric **F**.
- Two (2) 15" x 1¼" rectangles from fabric **F**.
- Two (2) 15" x 11" rectangles from fabric **F** (back of pillow).
- Two (2) 9½" x 1¼" rectangles from fabric **F**.
- Two (2) 4" x 1¼" rectangles from fabric **F**.
- Forty (40) 1¼" x 2½" rectangles from fabric **F**.

## CONSTRUCTION

Sew all rights sides together with ¼" seam allowance.

- Follow diagram below for each row assembly.
- In between each block, join an 1¼"x 2½" rectangle from fabric **F**.

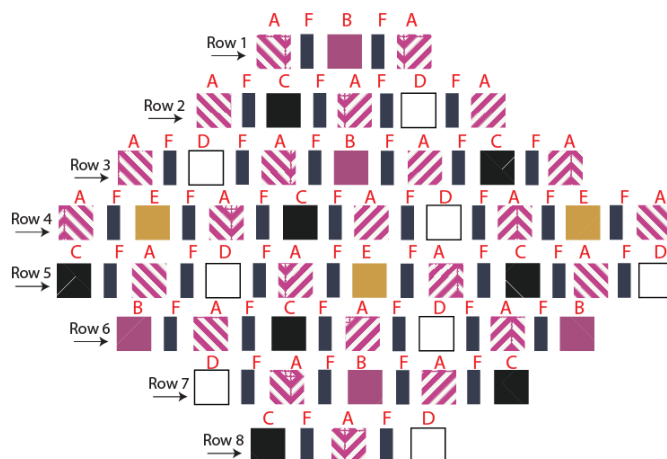


DIAGRAM 1

- Now, take the fabric **F** strips and join them on each row following the diagram below.

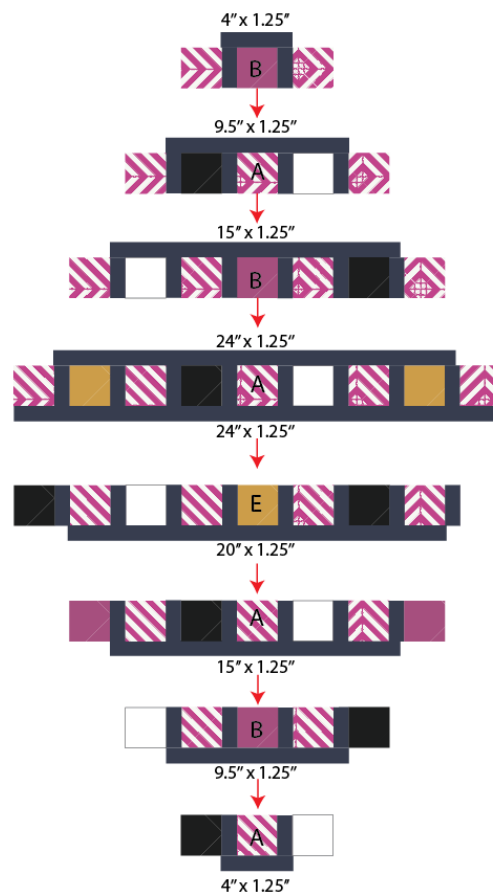


DIAGRAM 2

- Create a 15" square template, mark and trim your assembled piece
- Quilt as desired.

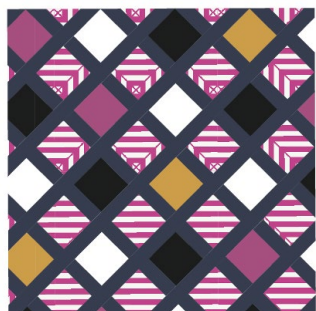
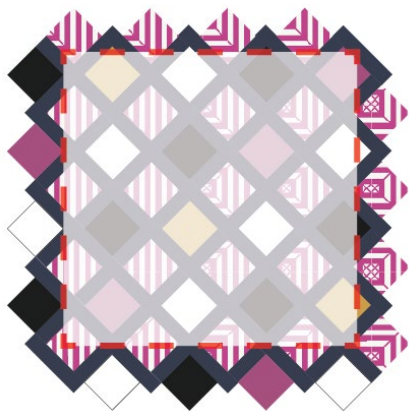


DIAGRAM 3

## CREATING THE BACK PILLOW

*Sew all rights sides together with ¼" seam allowance.  
Press open.*

- Take both 15" x 11" rectangles from fabric **F**.
- Fold one bottom edge ½" towards the wrong side of the fabric of one of the rectangle.
- Fold the same edge ½" again and edge stitch the fold in place to have a clean edge.
- Repeat the same for the top edge of the bottom piece.
- Take the quilted pillow top and lay it flat right side up.
- Take one rectangle from fabric **F** and align it wrong side up to the right side of the pillow top.
- Take the other rectangle from fabric **F** and align it wrong side up to the left side of the pillow top.
- Pin the three pieces in place and sew around the edges at ¼".
- Clip the corners and flip the piece to the right side of the fabric.
- Fill the pillow with a 14½" x 14½" pillow form and enjoy!

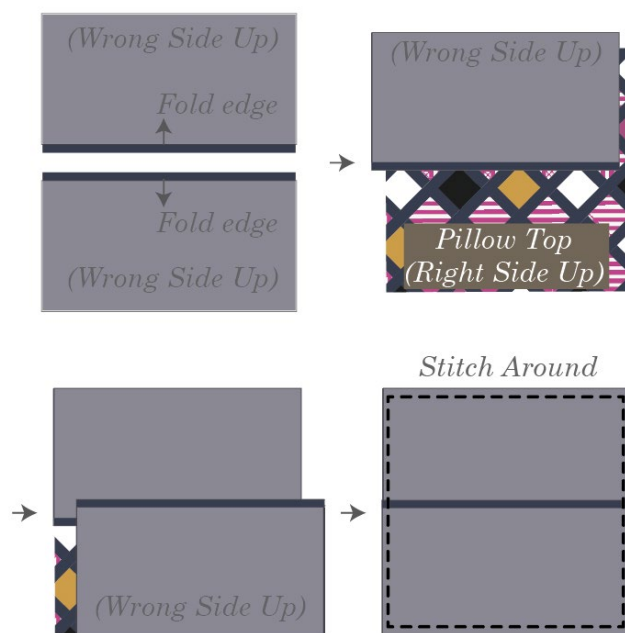


DIAGRAM 4

XXXXXXXXXXXXXXXXXXXXXXXXXXXXXXXXXXXX

*Congratulations  
& enjoy*

XXXXXXXXXXXXXXXXXXXXXXXXXXXXXXXXXXXX



[artgalleryfabrics.com](http://artgalleryfabrics.com)

NOTE: While all possible care has been taken to ensure the accuracy of this pattern, We are not responsible for printing errors or the way in which individual work varies.

Please read instructions carefully before starting the construction of this quilt. If desired, wash and iron your fabrics before starting to cut.