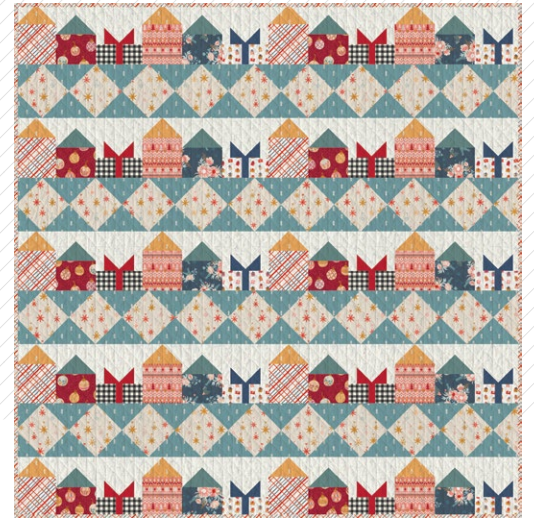






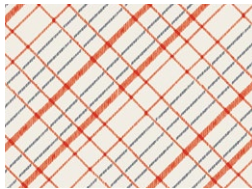
# Joy to the World

QUILT DESIGNED BY AGFstudio



## COZY & Magical

FABRICS DESIGNED BY MAUREEN CRACKNELL



CMA-25129  
UNTANGLED SCARVES



CMA-25122  
DECK THE HALLS



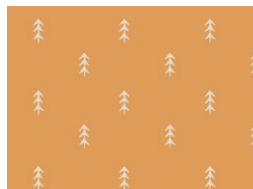
CMA-25123  
WARM & COZY CANDY



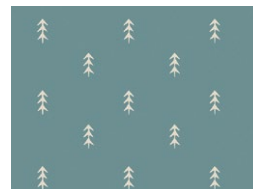
CMA-25120  
FROSTED ROSES MIDNIGHT



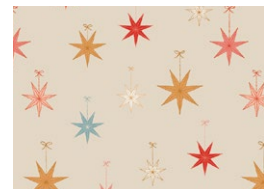
CMA-25126  
GIFT OF GIVING



CMA-25121  
SIMPLE DEFOLIAGE CHAI



CMA-25134  
SIMPLE DEFOLIAGE ICICLE



CMA-25132  
LET IT GLOW







FINISHED SIZE | 76" x 77"

## FABRIC REQUIREMENTS

Fabric <b>A</b>	CMA-25129	$\frac{7}{8}$ yd.
Fabric <b>B</b>	CMA-25122	$\frac{3}{8}$ yd.
Fabric <b>C</b>	PLD-S-900	$\frac{1}{4}$ yd.
Fabric <b>D</b>	PE-490	$\frac{1}{4}$ yd.
Fabric <b>E</b>	CMA-25123	$\frac{1}{2}$ yd.
Fabric <b>F</b>	CMA-25120	$\frac{3}{8}$ yd.
Fabric <b>G</b>	CMA-25126	$\frac{1}{4}$ yd.
Fabric <b>H</b>	PE-467	$\frac{1}{4}$ yd.
Fabric <b>I</b>	CMA-25121	$\frac{1}{2}$ yd.
Fabric <b>J</b>	PE-501	$\frac{1}{2}$ yd.
Fabric <b>K</b>	CMA-25134	2 $\frac{1}{4}$ yds.
Fabric <b>L</b>	CMA-25132	2 $\frac{1}{2}$ yds.
Fabric <b>M</b>	DSE-700	2 yd.

### BACKING FABRIC

CMA-25126 5 yds (*Suggested*)

### BINDING FABRIC

Fabric **A** CMA-25129 (*Included*)

## CUTTING DIRECTIONS

*$\frac{1}{4}$ " seam allowances are included.*

*WOF means width of fabric.*

- Ten (10) 6 $\frac{1}{2}$ " squares from fabric **A**.
- Eight (8) 1 $\frac{1}{2}$ " x WOF strips from fabric **A** (binding).
- Ten (10) 6 $\frac{1}{2}$ " x 5" rectangles from fabric **B**.
- Twenty (20) 3 $\frac{1}{2}$ " squares from fabric **C**.
- Twenty (20) 3" rectangles from fabric **D**.
- Ten (10) 3 $\frac{1}{2}$ " x 1 $\frac{1}{2}$ " rectangles from fabric **D**.
- Ten (10) 6 $\frac{1}{2}$ " squares from fabric **E**.
- Ten (10) 6 $\frac{1}{2}$ " x 5" squares from fabric **F**.
- Twenty (20) 3 $\frac{1}{2}$ " squares from fabric **G**.
- Twenty (20) 3" rectangles from fabric **H**.
- Ten (10) 3 $\frac{1}{2}$ " x 1 $\frac{1}{2}$ " rectangles from fabric **H**.
- Twenty (20) 6 $\frac{1}{2}$ " x 3 $\frac{1}{2}$ " rectangles from fabric **I**.
- Twenty (20) 6 $\frac{1}{2}$ " x 3 $\frac{1}{2}$ " rectangles from fabric **J**.
- One hundred and forty four (144) 4 $\frac{1}{2}$ " squares from fabric **K**.
- Four (4) 4 $\frac{7}{8}$ " squares from fabric **K**.
- Thirty six (36) 8 $\frac{1}{2}$ " squares from fabric **L**.
- Four (4) 4 $\frac{7}{8}$ " squares from fabric **L**.
- Twenty (20) 5" x 4" rectangles from fabric **M**.
- Forty (40) 1 $\frac{3}{4}$ " x 6 $\frac{1}{2}$ " rectangles from fabric **M**.
- Twenty (20) 6 $\frac{1}{2}$ " x 2" rectangles from fabric **M**.
- Eighty (80) 3 $\frac{1}{2}$ " squares from fabric **M**.





- Take two (2) **KL** half square triangles and join them following the diagram below.
- Create a total of four (4) **KL** units.

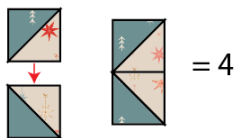


DIAGRAM 5

- Take the nine (9) **KL** blocks and one (1) **KL** assembled unit and join them together creating a long row following the diagram below.
- Create a total of four (4) rows.

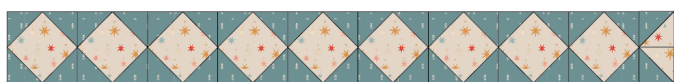


DIAGRAM 6

#### House 1:

- Take ten (10)  $6\frac{1}{2}$ " squares from fabric **A** and ten (10) **MIM** flying geese.
- Join them following the diagram below to make ten (10) house 1.

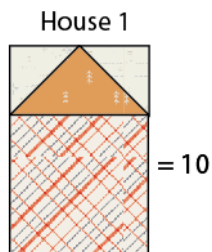


DIAGRAM 7

#### House 2:

- Take ten (10)  $6\frac{1}{2}$ " squares from fabric **E** and ten (10) **MIM** flying geese.
- Join them following the diagram below to make ten (10) house 2.

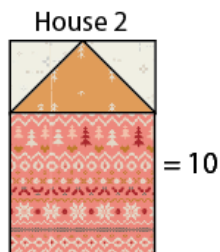


DIAGRAM 8

#### House 3:

- Take ten (10)  $6\frac{1}{2}$ " x 5" rectangles from fabric **B**, ten (10)  $6\frac{1}{2}$ " x 2" strips from fabric **M**, and ten (10) **MJM** flying geese.
- Join each **MJM** flying geese to each  $6\frac{1}{2}$ " x 5" rectangles from fabric **B** creating a small house.
- Join every  $6\frac{1}{2}$ " x 2" strip from fabric **M**, on top of the house following the diagram below.
- Repeat the same process until you have ten (10) house 3.

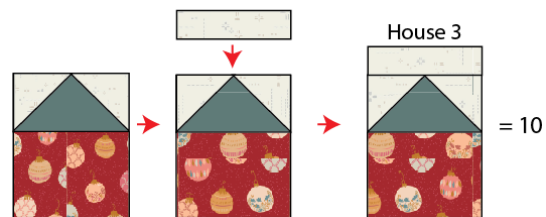


DIAGRAM 9

#### House 4:

- Take ten (10)  $6\frac{1}{2}$ " x 5" rectangles from fabric **F**, ten (10)  $6\frac{1}{2}$ " x 2" strips from fabric **M**, and ten (10) **MJM** flying geese.
- Join each **MJM** flying geese to each  $6\frac{1}{2}$ " x 5" rectangles from fabric **F** creating a small house.
- Join every  $6\frac{1}{2}$ " x 2" strip from fabric **M**, on top of the house following the diagram below.
- Repeat the same process until you have ten (10) house 4.

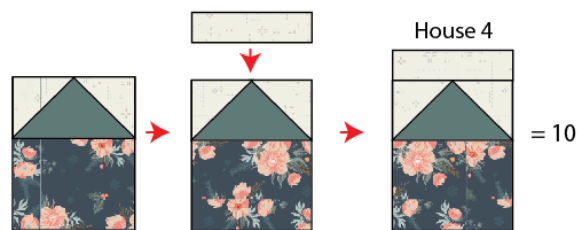


DIAGRAM 10









## QUILT ASSEMBLY

*Sew rights sides together.*

- Place BACKING FABRIC on a large surface wrong side up. Stretch it with masking tape against that surface.
- Place BATTING on top of backing fabric.
- Place TOP on top of the batting with right side facing up. Smooth away wrinkles using your hands.
- Pin all layers together and baste with basting thread, using long stitches. You can also use safety pins to join the layers.
- Machine or hand quilt starting at the center and working towards the corners. Remember that quilting motifs are a matter of personal preference. Have fun choosing yours!
- After you finished, trim excess of any fabric or batting, squaring the quilt to proceed to bind it.

## BINDING

*Sew rights sides together.*

- Cut enough strips  $1\frac{1}{2}$ " wide by the width of the fabric **A** to make a final strip 316" long. Start sewing the binding strip in the middle of one of the sides of the quilt, placing the strip right side down and leaving an approximated 5" tail. Sew with  $\frac{1}{4}$ " seam allowance (using straight stitch), aligning the strip's raw edge with the quilt top's raw edge.
- Stop stitching  $\frac{1}{4}$ " before the edge of the quilt (DIAGRAM B 1). Clip the threads. Remove the quilt from under the machine presser foot. Fold the strip in a motion of  $45^\circ$  and upward, pressing with your fingers (DIAGRAM B2). Hold this fold with your finger, bring the strip down in line with the next edge, making a horizontal fold that aligns with the top edge of the quilt (DIAGRAM B3). Start sewing at  $\frac{1}{4}$ " of the border, stitching all the layers. Do the same in the four corners of the quilt.

- Stop stitching before you reach the last 5 or 6 inches. Cut the threads and remove the quilt from under the machine presser foot. Lay the loose ends of the binding flat along the quilt edge, folding the ends back on themselves where they meet. Press them together to form a crease. Using this crease as the stitching line, sew the two open ends of the binding with right sides together (you can help yourself marking with a pencil if the crease is difficult to see).
- Trim seam to  $\frac{1}{4}$ " and press open. Complete the sewing. Turn binding to back of the quilt, turn raw edge inside and stitch by hand using blind stitch.

