

featuring LEGENDARY COLLECTION BY PAT BRAVO

X
X
X
X
X
X
X
X
X
X
X
X
X
X
X
X



Dreamy Clutch



FREE PATTERN

XXXXXXXXXXXXXXXXXXXXXXXXXXXXXXXX





Dreamy Clutch

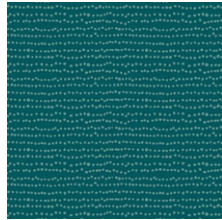
DESIGNED BY AGFstudio

LEGENDARY

FABRICS DESIGNED BY PAT BRAVO



LGD-39700
STITCHED ANTHOMANIA
BOLD



LGD-49710
FLECKS BOHO

ADDITIONAL BLENDERS FOR THIS PROJECT



FE-536
FUCHSIA



Dreamy Clutch

FINISHED SIZE | 12" x 10"

FABRIC REQUIREMENTS

Fabric **A** LGD-39700 ¼ yd.
 Fabric **B** LGD-49710 ⅜ yd.
 Fabric **C** FE-536 ⅜ yd.

LINING FABRIC

LGD-49710 ⅜ yds (Included)

ADDITIONAL MATERIAL

13" Zipper

CUTTING DIRECTIONS

¼" seam allowances are included.
 WOF means width of fabric.

Fabric **A**:

- Twenty eight (28) 2½" squares.
- Eight (8) 2⅞" squares.

Fabric **B**:

- Two (2) 14½" x 12½" rectangles (lining).
- Two (2) 2⅞" squares.
- Four (4) 2½" squares.

Fabric **C**:

- Ten (10) 2⅞" squares.
- Eight (8) 2½" squares.

HST CONSTRUCTION

Sew all rights sides together with ¼" seam allowance.
 HST means Half Square Triangles.

Half Square Triangle construction

- Take two (2) 2⅞" squares and place them right sides facing.
- Draw a line diagonally corner to corner using a mechanical pencil or frixion pen.
- Stitch at ¼" from each side of the drawn line.
- Cut along the marked diagonal line.
- Press open and trim to a 2½" squares.

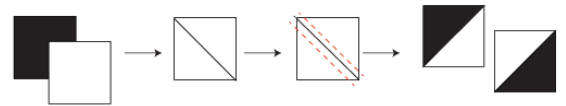


DIAGRAM 1

- Take eight (8) 2⅞" squares from fabric **A**, two (2) 2⅞" squares from fabric **B** and ten (10) 2⅞" squares from fabric **C** and follow the HST instruction in order to make the following combinations:

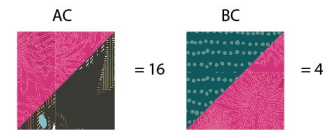


DIAGRAM 2

- To assemble one of the sides of your clutch, follow the diagram below for each row assembly.

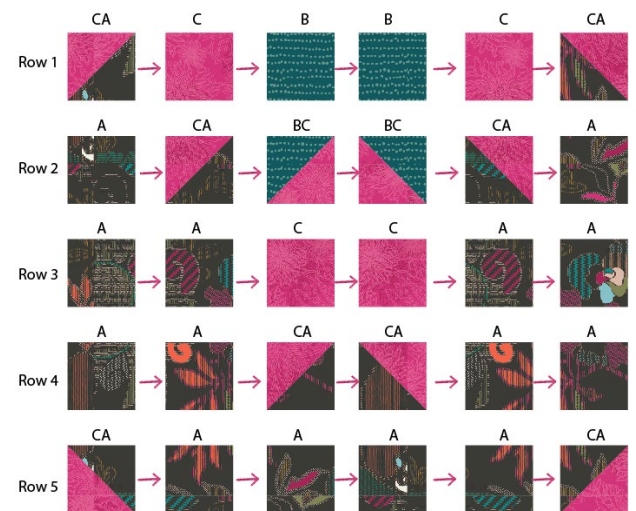


DIAGRAM 3

- Now, join rows 1-5.

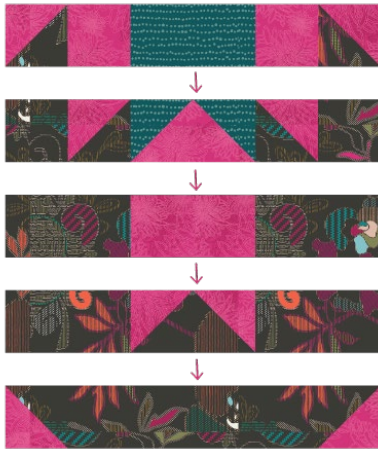


DIAGRAM 4

- Repeat the same construction in order to have two (2) assembled pieces.
- Quilt as desired.

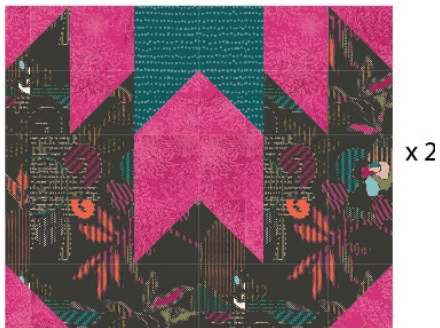


DIAGRAM 5

- Change your sewing foot for the zipper foot.
- Place one (1) 14½" x 12½" rectangle from fabric **B**, which is the lining and one of the assembled piece right sides facing together.
- Sandwich the zipper, right side down, on top of the assembled piece.
- Pin and stitch along the edge of the zipper.



DIAGRAM 6

- x
- Press the fabric away from the zipper.
 - Topstitch across the seam through both layer of fabric (lining and outside).
 - Join the zipper to the other side of the pouch repeating the previous steps.
 - Press the fabric away from the zipper and top stitch along both sides of the zipper.



DIAGRAM 7

- Pin back and front right sides together and lining pieces right sides together. The end of the zipper should be pinned to the lining pieces.
- Separate the front and back pieces together and then the lining pieces together on each side of the bag fold the "flaps" so that you are matching the exterior fabrics right sides together, and the lining fabrics right sides together.
- Pin in place to form one large rectangle with exterior pieces to one side and lining pieces to the other side.
- The red line in the picture above shows your stitching line.
- Stitch, with ½" seam allowance, all the way around the clutch, leaving a 4-5 inch opening in the lining side of the bag for turning.



DIAGRAM 8

- Turn the clutch inside out and handstitch the lining opening.
- Enjoy!

XXXXXXXXXXXXXXXXXXXXXXXXXXXXXXXXXXXX

*Congratulations
& enjoy*

XXXXXXXXXXXXXXXXXXXXXXXXXXXXXXXXXXXX



artgalleryfabrics.com

NOTE: While all possible care has been taken to ensure the accuracy of this pattern, We are not responsible for printing errors or the way in which individual work varies.

Please read instructions carefully before starting the construction of this quilt. If desired, wash and iron your fabrics before starting to cut.