

Wanderer

KEYCHAIN



FREE PATTERN

XXXXXXXXXXXXXXXXXXXXXXXXXXXX

Wanderer

KEYCHAIN

DESIGNED BY *AGFstudio*



FABRICS DESIGNED BY JESSICA SWIFT



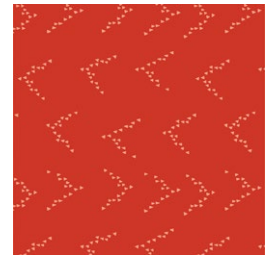
FLP-66801
YOUR PATH SUNFLOWER



FLP-66802
JUBILEE MIDNIGHT



FLP-66808
GLORIOUS MORNING



FLP-66804
FOLLOW THE LEADER

ADDITIONAL BLENDERS FOR THIS PROJECT



PE-417
EMERALD



PE-461
TIGERLILY



DEN-L-4000
SOFT SAND



Wanderer

KEYCHAIN

FINISHED SIZE | 3½" x 3½"

FABRIC REQUIREMENTS

Fabric A	FLP-66801	F8.
Fabric B	FLP-66802	F8.
Fabric C	PE-417	F8.
Fabric D	FLP-66808	F8.
Fabric E	FLP-66804	F8.
Fabric F	PE-461	F8.
Fabric G	DEN-L 4000	F8.

ADDITIONAL MATERIALS

- Steam a Seam
- Pillow Stuffing
- Key Rings

CUTTING DIRECTIONS

¼" seam allowances are included.
WOF means width of the fabric.

- One (1) 10½" square from fabric **A**.
- Two (2) template L1 from fabric **A**.
- One (1) template R3 from fabric **A**.
- One (1) template L2 from fabric **B**.
- One (1) template R4 from fabric **B**.
- Two (2) template C1 from fabric **C**.
- One (1) template C2 from fabric **D**.
- Two (2) template R1 from fabric **E**.
- One (1) template R2 from fabric **F**.
- Four (4) 2" x 3" rectangles from fabric **G**.

CONSTRUCTION

Sew all rights sides together with ¼" seam allowance.

- Take one (1) 2" x 3" strip from fabric **E**, and fold the strips in half lengthwise to create a crease in the center.
- Open them and fold the edges towards the center crease.
- Stitch right on the edge and then sew at the other edge of the piece.
- Fold the edges and stitch them to have a clean finish.



DIAGRAM 1

- Slip the keyring onto the fabric **D** and fold in half. Baste the end together.

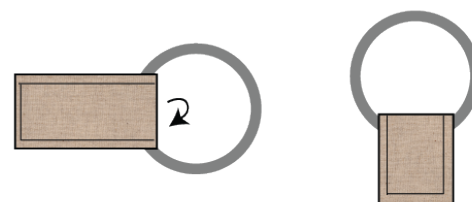


DIAGRAM 2

- Using steam a seam take template L2 from fabric **B** and place in the center of template L1 from fabric **A**.

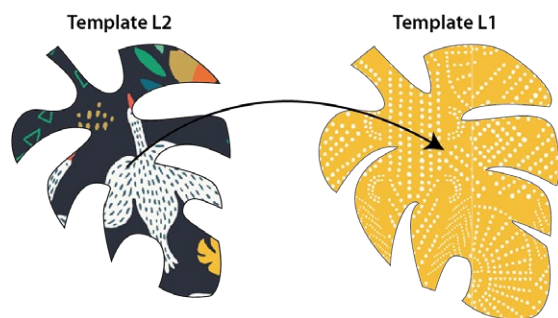


DIAGRAM 3

- Place the keyring in the wrong side and machine stitch to secure the piece.
- Take the other L1 template cutout from fabric **A** and place both pieces wrong sides facing together. Pin your piece and stuff the keychain with a bit of pillow stuffing.
- Using a zig zag stitch the edges with a matching color thread.



DIAGRAM 4

- Using steam a seam take template C2 from fabric **D** and place in the center of template C1 from fabric **C**.

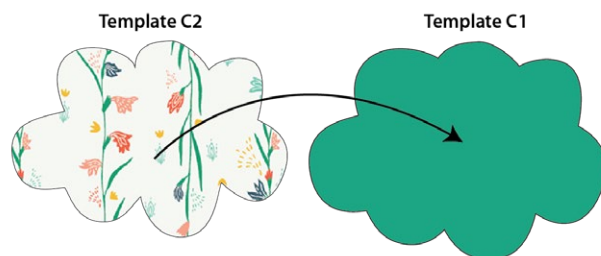


DIAGRAM 5

- Place the keyring in the wrong side and machine stitch to secure the piece.
- Take the other C1 template cutout from fabric **C** and place both pieces wrong sides facing together. Pin your piece and stuff the keychain with a bit of pillow stuffing.
- Using a zig zag stitch the edges with a matching color thread.

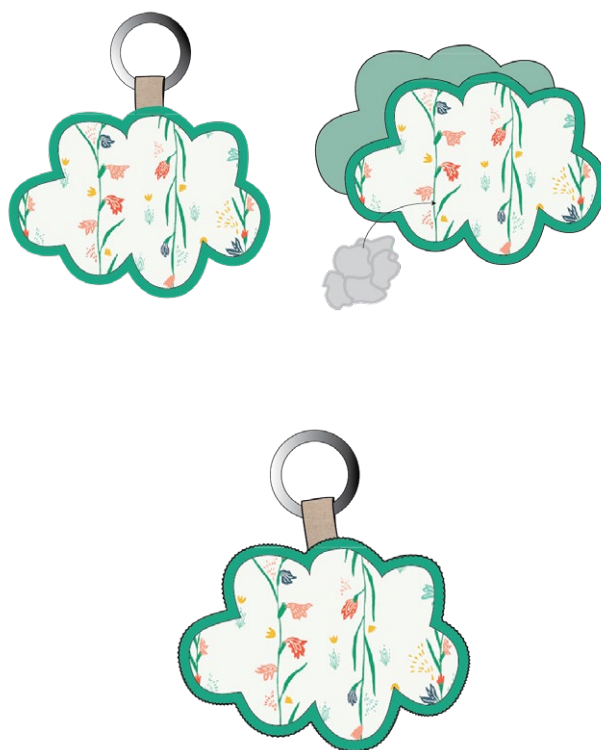


DIAGRAM 6

- Using steam a seam take template R2 from fabric **F** and place on the bottom center of template R1 from fabric **E**.

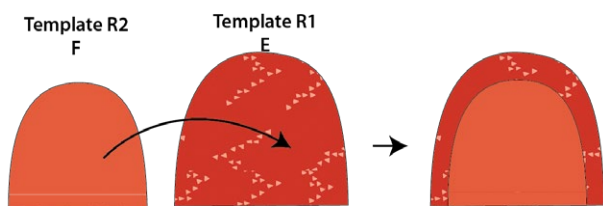


DIAGRAM 7

- Using steam a seam take template R3 from fabric **A** and place on the bottom center of the piece.

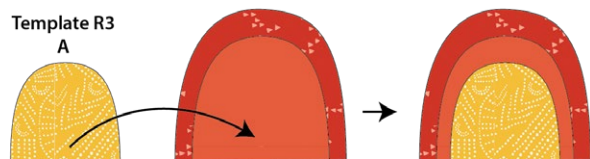


DIAGRAM 8

- Using steam a seam take template R4 from fabric **B** and place on the bottom center of the piece.

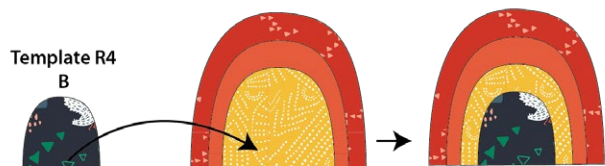


DIAGRAM 9

- Place the keyring in the wrong side and machine stitch to secure the piece.
- Take the other R1 template cutout from fabric **E** and place both pieces wrong sides facing together. Pin your piece and stuff the keychain with a bit of pillow stuffing.
- Using a zig zag stitch the edges with a matching color thread.



DIAGRAM 10

XXXXXXXXXXXXXXXXXXXXXXXXXXXXXXXXXXXX

*Congratulations
& enjoy*

XXXXXXXXXXXXXXXXXXXXXXXXXXXXXXXXXXXX



artgalleryfabrics.com

NOTE: While all possible care has been taken to ensure the accuracy of this pattern, We are not responsible for printing errors or the way in which individual work varies.

Please read instructions carefully before starting the construction of this quilt. If desired, wash and iron your fabrics before starting to cut.

© 2022 Courtesy of Art Gallery Quilts LLC. All Rights Reserved.

TEMPLATES

1" Test square

