

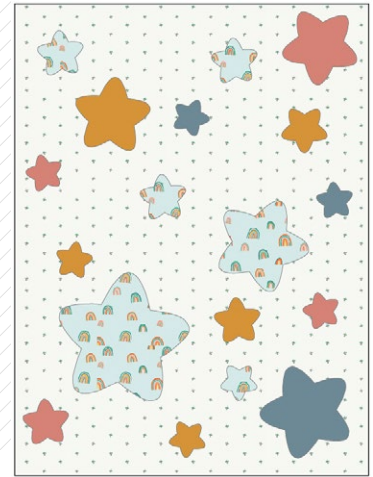
A large quilted blanket with a white background and a green border. The blanket is decorated with various colorful stars and rainbows. The stars are in shades of red, yellow, and blue, and some are decorated with small rainbows. The blanket is displayed against a teal background.

XXXXXXXXXXXXXXXXXXXXXXXXXXXX

A DIVISION OF AGF

Twinkle Stars

DESIGNED BY AGFstudio



FABRICS DESIGNED BY JESSICA SWIFT



FLP-66803
LIGHT THE WAY



F-66807-1
FORTUNATE AGLOW

ADDITIONAL BLENDERS FOR THIS PROJECT



FS-202
SUNFLOWER



FS-203
PINK CLAY



FS-201
RETRO BLUE



PE-464
WARM WAVE



Twinkle Stars

FINISHED SIZE | 30" x 40"

FABRIC REQUIREMENTS

Fabric A	FLP-66803	1¼ yd.
Fabric B	F-66807-1	¾ yd.
Fabric C	FS-202	¼ yd.
Fabric D	FS-203	¼ yd.
Fabric E	FS-201	¼ yd.
Fabric F	PE-464	¼ yd.

BACKING FABRIC
F-66807-1 1¼ yds (*Suggested*)

BINDING FABRIC
Fabric **F** PE-464 (*Included*)

CUTTING DIRECTIONS

¼" seam allowances are included.
WOF means width of fabric.

- One (1) 30" x 40" rectangle from fabric **A**.
- One (1) template 1 from fabric **B**.
- One (1) template 2 from fabric **B**.
- Three (3) template 4 from fabric **B**.
- One (1) template 5 from fabric **B**.
- One (1) template 3 from fabric **C**.
- Two (2) template 4 from fabric **C**.
- Two (2) template 5 from fabric **C**.
- One (1) template 3 from fabric **D**.
- One (1) template 4 from fabric **D**.
- Two (2) template 5 from fabric **D**.
- One (1) template 2 from fabric **E**.
- Two (2) template 5 from fabric **E**.
- Four (4) 1½" x WOF strips from fabric **F** (binding)

CONSTRUCTION

Sew all rights sides together with ¼" seam allowance.

- Take one (1) 30" x 40" rectangle from fabric **A** and quilt as desired.
- Follow the Quilt Assembly instruction at the end of the quilt instructions.

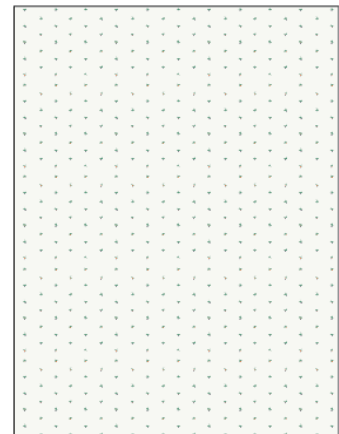


DIAGRAM 1

- Now, take your star template cutouts from fabric **B**, **C**, **D** and **E** and place it on the quilt top.
- Feel free to play around with the placement.
- Pin each fabric template cutout and use the blanket stitch from your machine and stitch the edges.
- Leave a small opening to add some pillow stuffing. Make sure not to fill too much.
- Close the opening. Repeat the same for each fabric piece.
- Enjoy!



QUILT ASSEMBLY

Sew rights sides together.

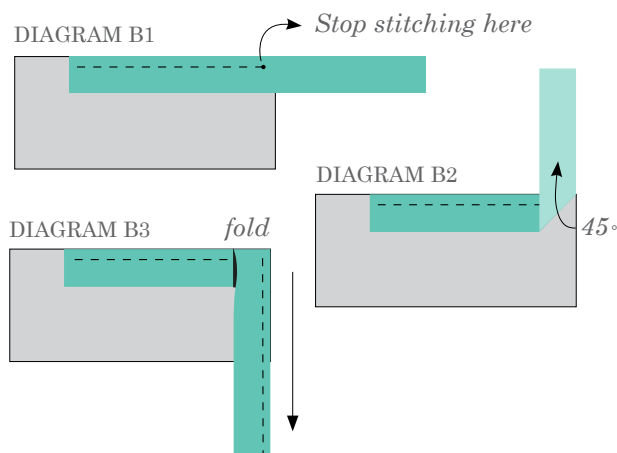
- Place BACKING FABRIC on a large surface wrong side up. Stretch it with masking tape against that surface.
- Place BATTING on top of backing fabric.
- Place TOP on top of the batting with right side facing up. Smooth away wrinkles using your hands.
- Pin all layers together and baste with basting thread, using long stitches. You can also use safety pins to join the layers.
- Machine or hand quilt starting at the center and working towards the corners. Remember that quilting motifs are a matter of personal preference. Have fun choosing yours!
- After you finished, trim excess of any fabric or batting, squaring the quilt to proceed to bind it.

- Stop stitching before you reach the last 5 or 6 inches. Cut the threads and remove the quilt from under the machine presser foot. Lay the loose ends of the binding flat along the quilt edge, folding the ends back on themselves where they meet. Press them together to form a crease. Using this crease as the stitching line, sew the two open ends of the binding with right sides together (you can help yourself marking with a pencil if the crease is difficult to see).
- Trim seam to $\frac{1}{4}$ " and press open. Complete the sewing. Turn binding to back of the quilt, turn raw edge inside and stitch by hand using blind stitch.

BINDING

Sew rights sides together.

- Cut enough strips $1\frac{1}{2}$ " wide by the width of the fabric **N** to make a final strip 240" long. Start sewing the binding strip in the middle of one of the sides of the quilt, placing the strip right side down and leaving an approximated 5" tail. Sew with $\frac{1}{4}$ " seam allowance (using straight stitch), aligning the strip's raw edge with the quilt top's raw edge.
- Stop stitching $\frac{1}{4}$ " before the edge of the quilt (DIAGRAM B 1). Clip the threads. Remove the quilt from under the machine presser foot. Fold the strip in a motion of 45° and upward, pressing with your fingers (DIAGRAM B2). Hold this fold with your finger, bring the strip down in line with the next edge, making a horizontal fold that aligns with the top edge of the quilt (DIAGRAM B3). Start sewing at $\frac{1}{4}$ " of the border, stitching all the layers. Do the same in the four corners of the quilt.



XXXXXXXXXXXXXXXXXXXXXXXXXXXXXXXXXXXX

*Congratulations
& enjoy*

XXXXXXXXXXXXXXXXXXXXXXXXXXXXXXXXXXXX



artgalleryfabrics.com

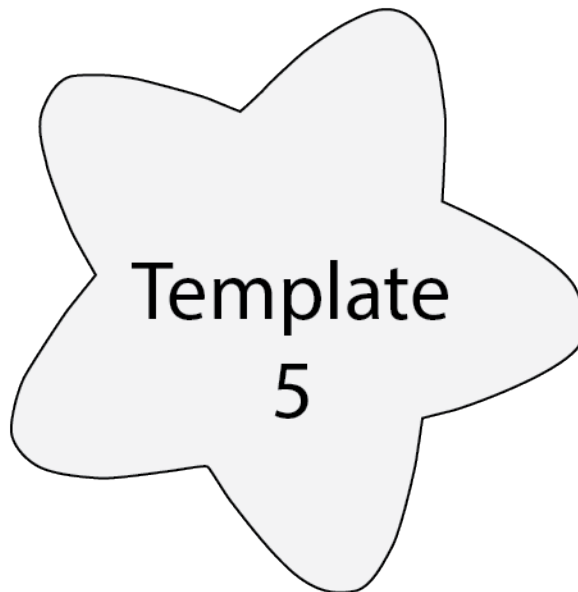
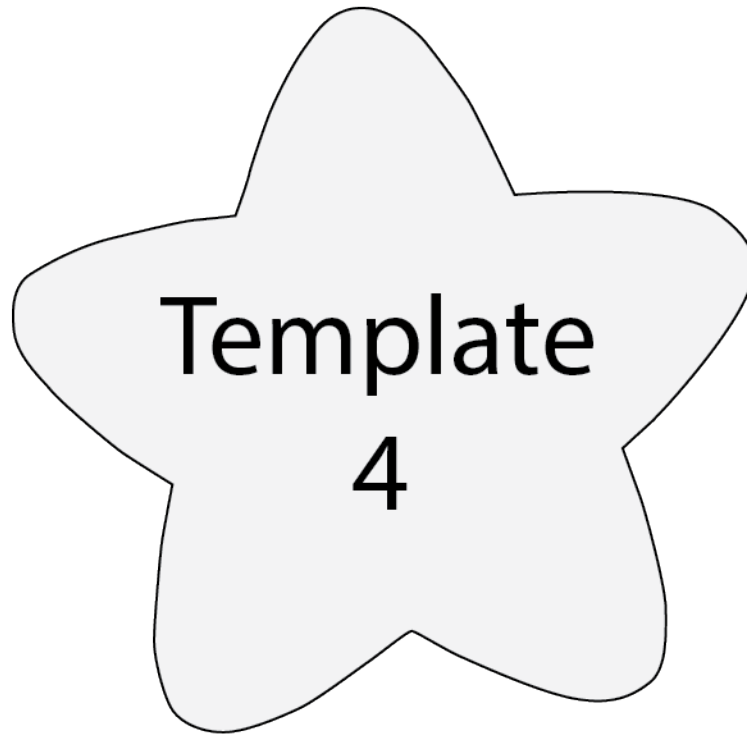
NOTE: While all possible care has been taken to ensure the accuracy of this pattern, We are not responsible for printing errors or the way in which individual work varies.

Please read instructions carefully before starting the construction of this quilt. If desired, wash and iron your fabrics before starting to cut.

Template 1

H

TT



Template 2

