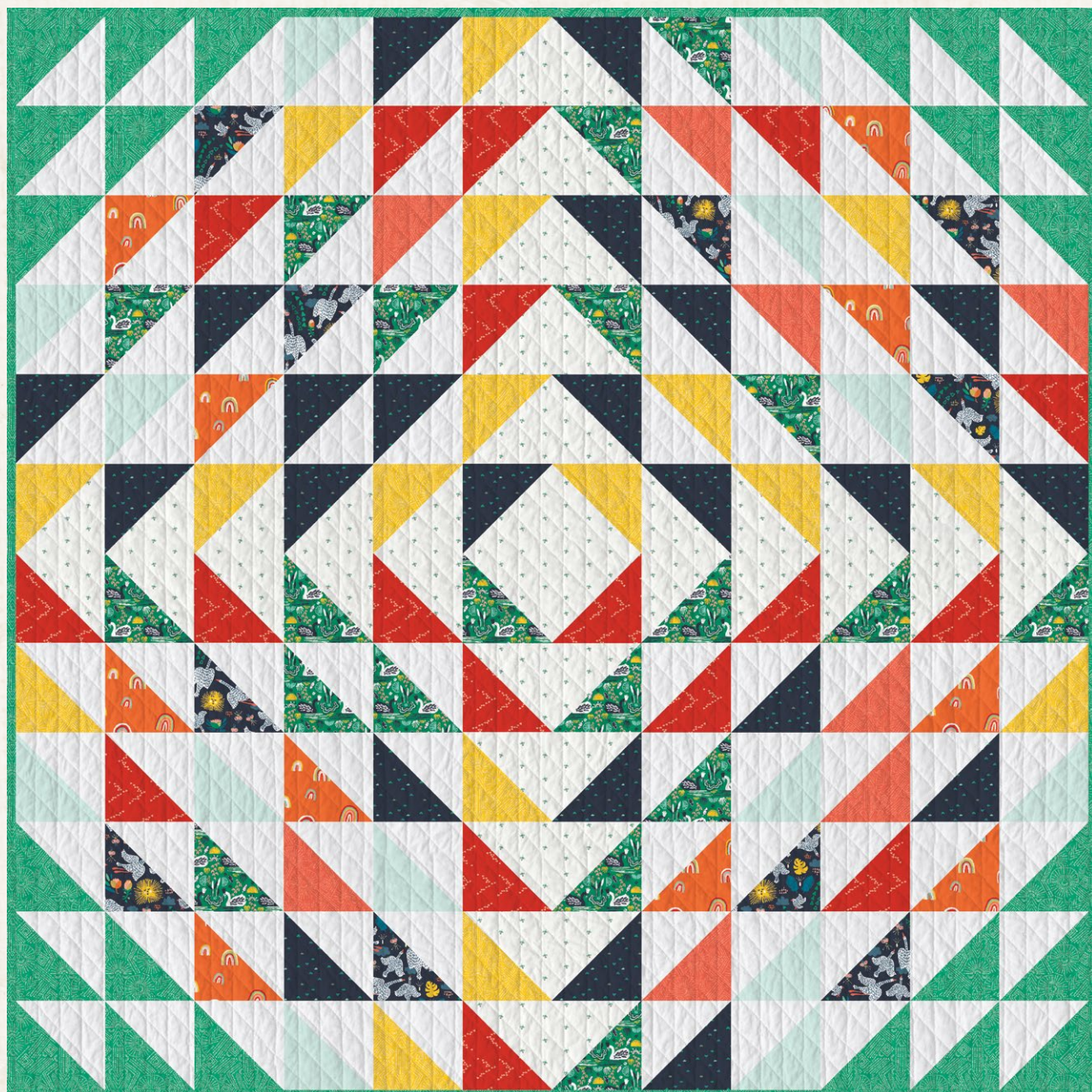


True Direction



ANGLES

A DIVISION OF AGF

FREE PATTERN

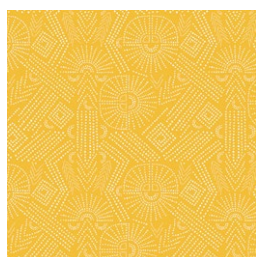
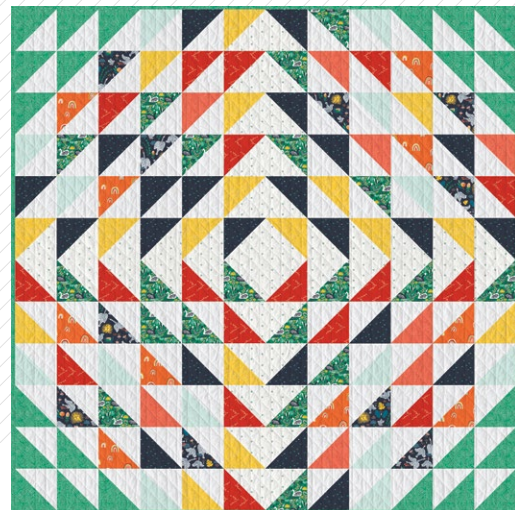
XXXXXXXXXXXXXXXXXXXXXXXXXXXX

True Direction

QUILT DESIGNED BY AGFstudio

Flight PATH

FABRICS DESIGNED BY JESSICA SWIFT



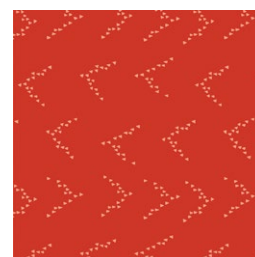
FLP-66801
YOUR PATH SUNFLOWER



FLP-66802
JUBILEE MIDNIGHT



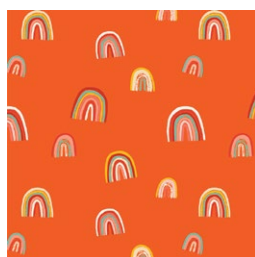
FLP-66803
LIGHT THE WAY



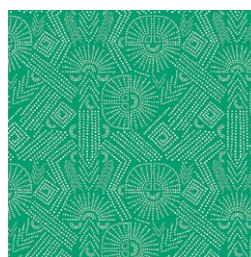
FLP-66804
FOLLOW THE LEADER



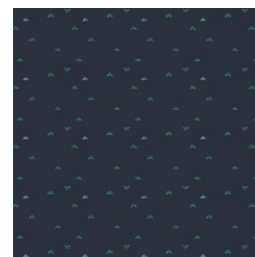
FLP-66806
YOUR PATH CORAL



FLP-66807
FORTUNATE SPIRITED



FLP-66809
YOUR PATH CLOVER



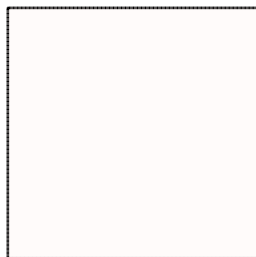
FLP-66810
BREEZEFLIGHT



FLP-66811
WANDERING SWANS



ADDITIONAL BLENDERS FOR THIS PROJECT



PE-433
SNOW



PE-451
ICY MINT

FINISHED SIZE | 72" x 72"

FABRIC REQUIREMENTS

Fabric A	FLP-66804	$\frac{5}{8}$ yd.
Fabric B	FLP-66810	$\frac{5}{8}$ yd.
Fabric C	PE-451	$\frac{1}{2}$ yd.
Fabric D	FLP-66809	$\frac{3}{4}$ yd.
Fabric E	FLP-66803	$1\frac{1}{2}$ yd.
Fabric F	FLP-66811	$\frac{5}{8}$ yd.
Fabric G	FLP-66801	$\frac{5}{8}$ yd.
Fabric H	FLP-66807	$\frac{3}{8}$ yd.
Fabric I	FLP-66806	$\frac{3}{8}$ yd.
Fabric J	PE-433	2 yd.
Fabric K	FLP-66802	$\frac{3}{8}$ yd.

BACKING FABRIC
FLP-66800 5 yds (*Suggested*)

BINDING FABRIC
Fabric **D** FLP-66809 (Included)

CUTTING DIRECTIONS

*¼" seam allowances are included.
WOF means width of fabric.*

Eleven (11) 6½" squares from fabric **A** & **B**.

Four (4) 6 $\frac{7}{8}$ " squares from fabric **A**.

Six (6) 6 $\frac{7}{8}$ " squares from fabric **B**.

Seven (7) 6 $\frac{7}{8}$ " squares from fabric **C**.

Twenty-two (22) 12½" x 6½" rectangles from fabric **E**.

Five (5) 6 $\frac{7}{8}$ " squares fabrics **F**, **H** and **K**.

x x x x x x x x x x x x x x x x x x x x

Three (3) 6 $\frac{7}{8}$ " squares from fabric **G**.

Eleven (11) 6½" squares from fabrics **F** & **G**

Four (4) 6 $\frac{7}{8}$ " squares from fabric I.

Fifty (50) 6 $\frac{7}{8}$ " squares from fabric J.

CONSTRUCTION

Sew all rights sides together with ¼"seam allowance.

HALF SQUARE TRIANGLES

- Start with the HST combinations.
- Bring one (1) 6 $\frac{7}{8}$ " square from fabrics **A** and **J**.



DIAGRAM 1

- Using a fabric marker, trace one line across the 6 $\frac{3}{8}$ " square from fabric **J**.
- Then place it on top of the fabric **A** square right sides of fabrics together and align them.
- Sew $\frac{1}{4}$ " away from the traced line in both sides of the line.

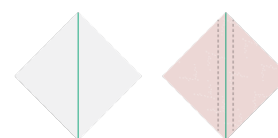


DIAGRAM 2

- After you are done with the two seamed lines cut on top of the traced line.
- You'll end up with two (2) **AJ** HST.
- Open them up and iron press.

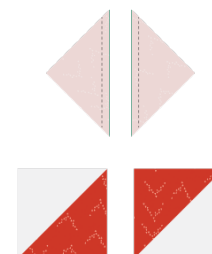


DIAGRAM 3

- Repeat the previous steps to complete all the remaining HST combinations.
- There are nine (9) different HST combinations needed for this quilt top, refer to the diagram below for HST combinations and quantities.

AJ		7
BJ		12
CJ		14
DJ		24
FJ		9
GJ		6
HJ		10
IJ		8
KJ		10

DIAGRAM 4

FLYING GEESE

- Bring one (1) $12\frac{1}{2}" \times 6\frac{1}{2}"$ rectangle from fabric **E** and one (1) $6\frac{1}{2}"$ squares from fabrics **B** and **F**.
- Take the square from fabric **B** and place it on top of the left side of the rectangle from fabric **E**, align it to the left, top & bottom edges, pin it in place and then sew diagonally from the left bottom corner of the square to the right top corner.
- Trim the excess fabric leaving a $\frac{1}{4}"$ seam allowance.
- Open and press.

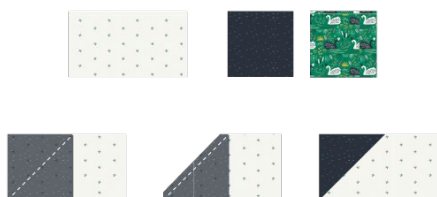


DIAGRAM 5

- Repeat the previous step but now on the right corner of the rectangle with the remaining square **F**.
- You have now completed the one (1) **BEF** flying geese needed for the construction of this quilt top.
- Set aside.



DIAGRAM 6

- Repeat the previous procedure for the remaining flying geese combinations.
- Refer to the diagram below for combinations and quantities.

BEF		3
FEB		2
AEF		3
FEA		3
BEG		3
GEB		3
AEG		3
GEA		2

DIAGRAM 7

QUILT TOP

- Using all the HST and Flying geese make eleven rows.
- Refer to the diagrams in the next page for rows placement and directions.
- Skip Row #6 for now and move on with Row #7.
- Be aware that after row #7 the flying geese are facing down.

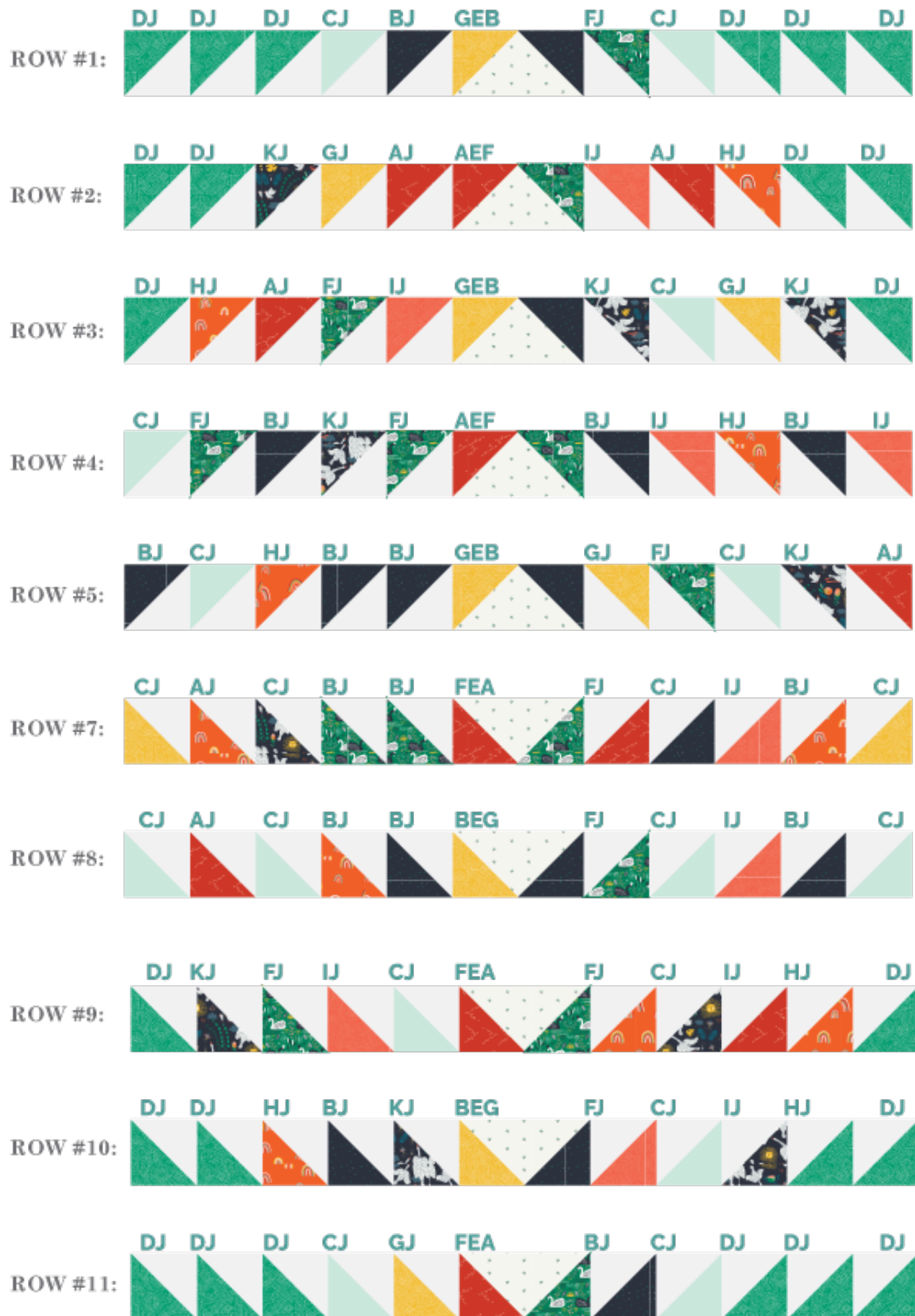


DIAGRAM 8

- Continue with row six, use all the remaining flying geese pieces and arrange them as shown in the diagram below.



ROW # 6

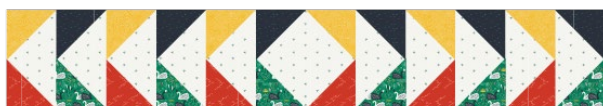


DIAGRAM 9

- Attach the rows together from #1- #11 as shown in the diagram bellow or in the cover picture..



DIAGRAM 10

QUILT ASSEMBLY

Sew rights sides together.

- Place BACKING FABRIC on a large surface wrong side up. Stretch it with masking tape against that surface.
- Place BATTING on top of backing fabric.
- Place TOP on top of the batting with right side facing up. Smooth away wrinkles using your hands.
- Pin all layers together and baste with basting thread, using long stitches. You can also use safety pins to join the layers.

- Place BACKING FABRIC on a large surface wrong side up. Stretch it with masking tape against that surface.

- Place BATTING on top of backing fabric.

- Place TOP on top of the batting with right side facing up. Smooth away wrinkles using your hands.

- Pin all layers together and baste with basting thread, using long stitches. You can also use safety pins to join the layers.

- Machine or hand quilt starting at the center and working towards the corners. Remember that quilting motifs are a matter of personal preference. Have fun choosing yours!

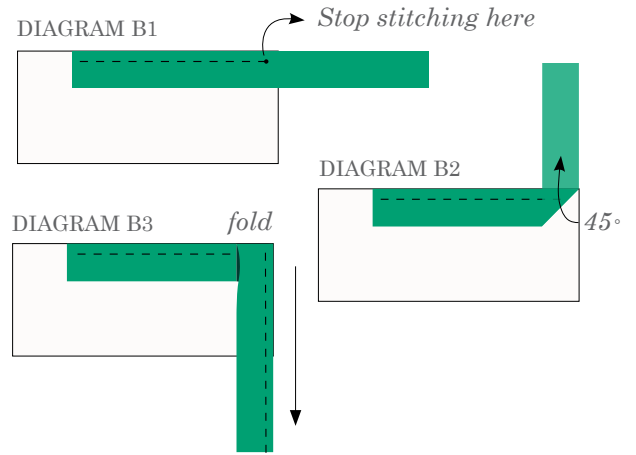
- After you finished, trim excess of any fabric or batting, squaring the quilt to proceed to bind it.

BINDING

Sew rights sides together.

- Cut enough strips $1\frac{1}{2}$ " wide by the width of the fabric D to make a final strip 298" long. Start sewing the binding strip in the middle of one of the sides of the quilt, placing the strip right side down and leaving an approximated 5" tail. Sew with $\frac{1}{4}$ " seam allowance (using straight stitch), aligning the strip's raw edge with the quilt top's raw edge.
- Stop stitching $\frac{1}{4}$ " before the edge of the quilt (DIAGRAM B 1). Clip the threads. Remove the quilt from under the machine presser foot. Fold the strip in a motion of 45° and upward, pressing with your fingers (DIAGRAM B2). Hold this fold with your finger, bring the strip down in line with the next edge, making a horizontal fold that aligns with the top edge of the quilt (DIAGRAM B3). Start sewing at $\frac{1}{4}$ " of the border, stitching all the layers. Do the same in the four corners of the quilt.

- Stop stitching before you reach the last 5 or 6 inches. Cut the threads and remove the quilt from under the machine presser foot. Lay the loose ends of the binding flat along the quilt edge, folding the ends back on themselves where they meet. Press them together to form a crease. Using this crease as the stitching line, sew the two open ends of the binding with right sides together (you can help yourself marking with a pencil if the crease is difficult to see).
- Trim seam to $\frac{1}{4}$ " and press open. Complete the sewing. Turn binding to back of the quilt, turn raw edge inside and stitch by hand using blind stitch.



XXXXXXXXXXXXXXXXXXXXXXXXXXXXXXXXXXXX

*Congratulations
& enjoy*

XXXXXXXXXXXXXXXXXXXXXXXXXXXXXXXXXXXX



artgalleryfabrics.com

NOTE: While all possible care has been taken to ensure the accuracy of this pattern, We are not responsible for printing errors or the way in which individual work varies.

Please read instructions carefully before starting the construction of this quilt. If desired, wash and iron your fabrics before starting to cut.

© 2022 Courtesy of Art Gallery Quilts LLC. All Rights Reserved.