

This is a black and white quilt pattern. The central square block features a diamond design made of four smaller squares, each containing a different geometric pattern. This central block is surrounded by a wide border composed of repeating geometric shapes, including triangles and squares, creating a complex and symmetrical overall design.



FUSIONS
by AGF

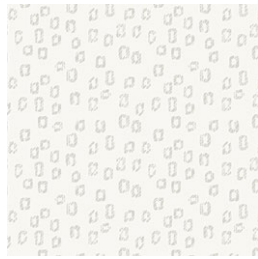
XXXXXXXXXXXXXXXXXXXX

Pentelic Marble

QUILT DESIGNED BY *AGEstudio*



DUALITY FUSION



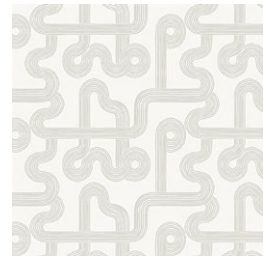
FUS-DU-2504
WOODBLOCK WHITE
by Sharon Holland



FUS-DU-2505
WOODBLOCK BLACK
by Sharon Holland



FUS-DU-2506
DOMESTIC CHARM WHITE
by Maureen Cracknell



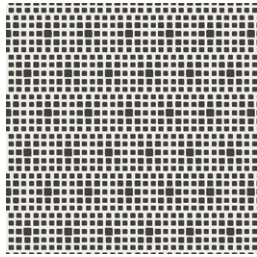
FUS-DU-2510
WINDING COURSE WHITE
by Bonnie Christine



FUS-DU-2511
WINDING COURSE BLACK
by Bonnie Christine



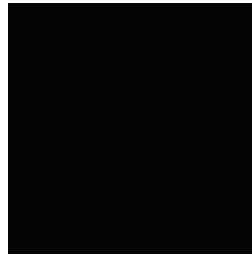
ADDITIONAL BLENDERS FOR THIS PROJECT



SE-607
NOIR



NE-120
CHARCOAL



PE-499
DEEP BLACK

Pentelic Marble

FINISHED SIZE | 64" x 74"

FABRIC REQUIREMENTS

Fabric A	FUS-DU-2504	1¼ yd.
Fabric B	FUS-DU-2505	⅞ yd.
Fabric C	FUS-DU-2506	¾ yd.
Fabric D	FUS-DU-2510	¾ yd.
Fabric E	FUS-DU-2511	¾ yd.
Fabric F	SE-607	⅞ yd.
Fabric G	NE-120	⅜ yd.
Fabric H	PE-499	¾ yd.

BACKING FABRIC

FUS-DU-2503 5 yds (Suggested)

BINDING FABRIC

Fabric **H** PE-499 (Included)

CUTTING DIRECTIONS

¼" seam allowances are included.
WOF means width of fabric.

- Ten (10) 20½" x 5½" rectangles from fabric **A**.
- Eight (8) 10½" x 5½" rectangles from fabric **A**.
- Two (2) 11¾" squares from fabric **B**.
- Twenty (20) 5½" squares from fabric **B**.
- Two (2) 10⅝" x 6" rectangles from fabric **B**.

- Two (2) 10⅝" x 6" rectangles from fabric **C**.
- Two (2) 11¼" squares from fabric **C**.
- Four (4) template 1 from fabric **C**.
- Two (2) 11¼" squares from fabric **D**.
- Five (5) 10½" squares from fabric **D**.
- Two (2) 11¾" squares from fabric **E**.
- Four (4) 10¾" x 6" rectangles from fabric **E**.
- Eight (8) 5⅞" squares from fabric **E**.
- Eight (8) 5⅞" squares from fabric **F**.
- Six (6) 2½" x WOF strips from fabric **F**.
- Two (2) 5½" x WOF strips from fabric **G**.
- Two (2) 5½" x WOF strips from fabric **H**.

CONSTRUCTION

Sew all rights sides together with ¼" seam allowance.

Eight at a Time Half Square Triangle:

1. Take two squares of fabric and align them face to face.
2. Draw two diagonal lines on the top square. Stitch at ¼" from the drawn lines on both sides.
3. Cut vertically, horizontally and diagonally crossing the center.
4. Open and press, you should get eight (8) HSTs.

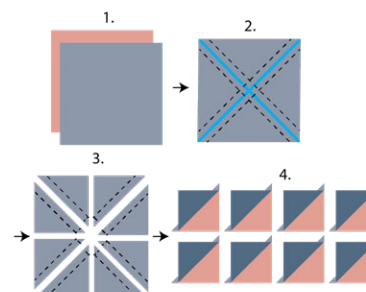


DIAGRAM 1

- Take two (2) 11 $\frac{3}{4}$ " squares from fabrics **B** and **E**.
- Align each square from fabric **B** with a square from fabric **E** and do the eight at a time HST method.
- You will get sixteen (16) **BE** HSTs, and you will only need twelve (12) **BE** HST.



No Waste Flying Geese:

1. Take one big square (A) and four small squares (B, C, D and E).
2. Align B and C to A in opposite corners face to face. B and C will overlap a little bit in the center.
3. Draw a diagonal line and stitch $\frac{1}{4}$ " from each side of the drawn line.
4. Cut on the drawn line.
5. Press open both pieces and pair them with D and E.
6. Align D and E face to face with the corner of A in each of the resulting pieces,
5. Draw a diagonal line on each piece following the diagram, and stitch at $\frac{1}{4}$ " from each side of the drawn line.
7. Cut on the line of each piece.
8. Press open. You should get four (4) flying geese.

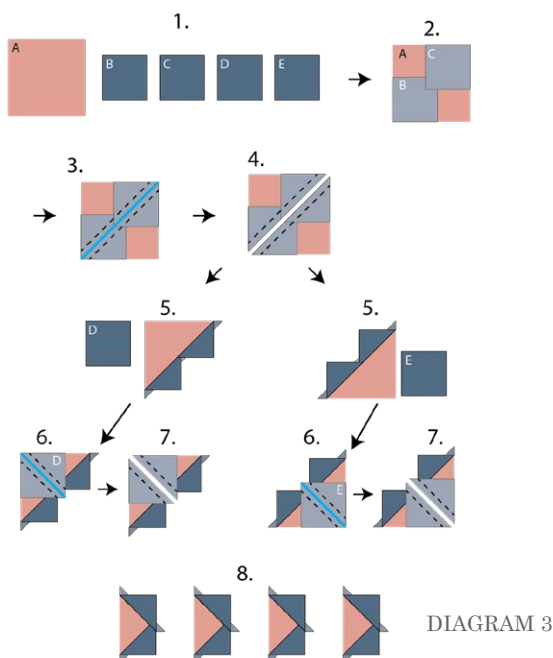


DIAGRAM 3

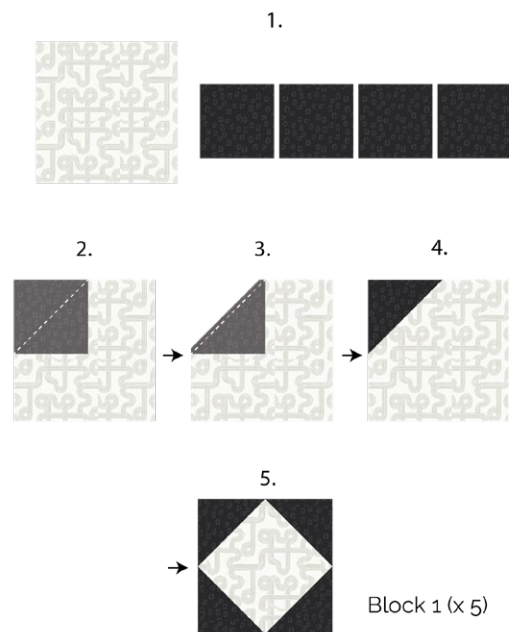
- Take eight (8) 5 $\frac{7}{8}$ " squares from fabrics **E** and **F**, and two (2) 11 $\frac{1}{4}$ " squares from fabrics **C** and **D**.
- Pair each square from fabric **D** with four (4) squares from fabric **F** and each square from fabric **C** with four (4) squares from fabric **E**.
- Do the no waste flying geese technique.
- You will get eight (8) **DF** flying geese and eight (8) **CE** flying geese, you will use six (6) **DF** flying geese and eight (8) **CE** flying geese:



DIAGRAM 4

Block 1 (x 5)

- Take five (5) 10 $\frac{1}{2}$ " squares from fabric **D** and twenty (20) 5 $\frac{1}{2}$ " squares from fabric **B**.
1. Pair each square from fabric **D** with four (4) squares from fabric **B**.
 2. Align one square from fabric **B** face to face to the square from fabric **D** and stitch on the diagonal following the diagram.
 3. Trim at $\frac{1}{4}$ " from the stitch.
 4. Press open.
 5. Repeat the same process in each corner of square **D**.
 - Do four (4) more blocks.



Block 1 (x 5)

DIAGRAM 5

Block 2 (x 4)

- Take four (4) 10 $\frac{3}{4}$ " x 6" rectangles from fabric **E**.
- Align two (2) rectangles with template 2 and cut following the diagonal line.
- You will get four (4) triangles. Use template 2a to trim the corners.
- Align two (2) rectangles with template 3 and cut following the diagonal line.
- You will get four (4) triangles. Use template 3a to trim the corners.

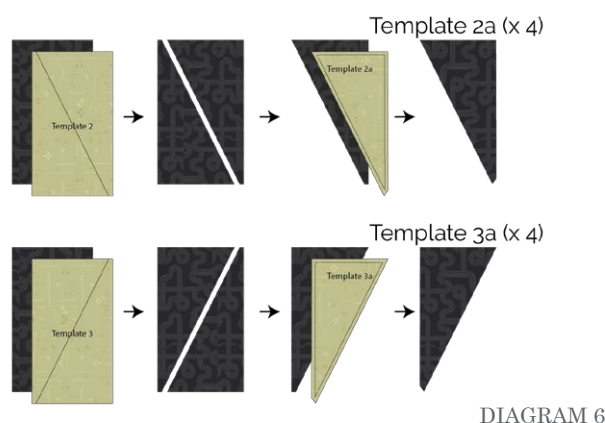


DIAGRAM 6

- Take four (4) template 1 from fabric **C**, four (4) template 2a from fabric **E** and four (4) template 3a from fabric **E**.
- Join template 2a to the right side of template 1, and template 3a to the left side of template 1.

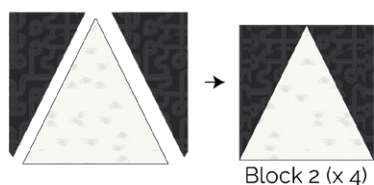


DIAGRAM 7

Block 3 (x 2)

- Take one (1) 10 $\frac{5}{8}$ " x 6" rectangle from fabrics **B** and **C**.
- Align the two (2) rectangles with template 4 and cut following the diagonal line.
- You will get four (4) triangles. Use template 4a to trim the corners.
- Join the each triangle from fabric **B** to each triangle from fabric **C**.

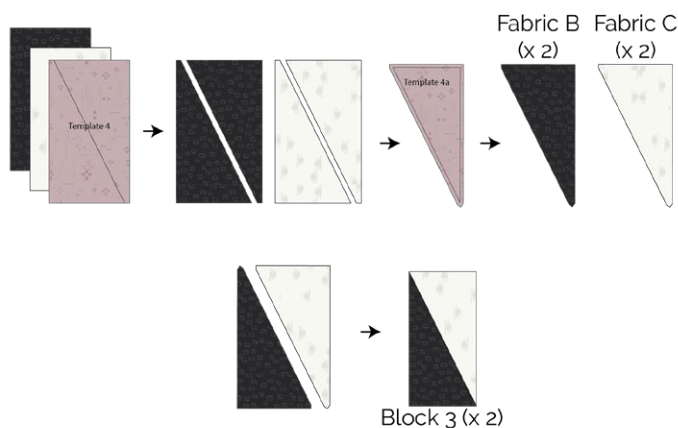


DIAGRAM 8

Block 4 (x 2)

- Take one (1) 10 $\frac{5}{8}$ " x 6" rectangle from fabrics **B** and **C**.
- Align the two (2) rectangles with template 4 and cut following the diagonal line.
- You will get four (4) triangles. Use template 4a to trim the corners.
- Join the each triangle from fabric **B** to each triangle from fabric **C**.

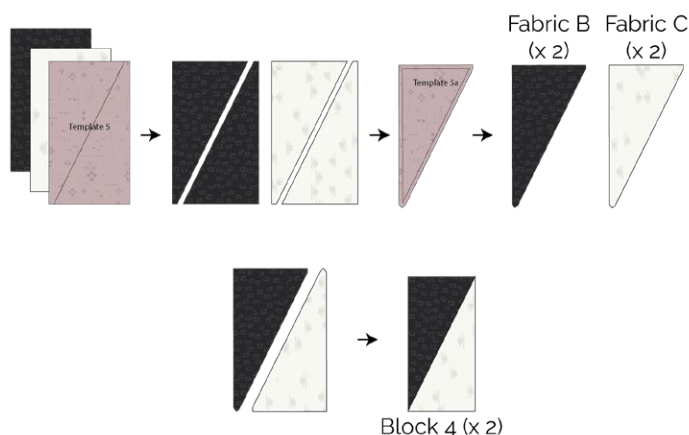


DIAGRAM 9

Block 5

- Take two (2) 5 $\frac{1}{2}$ " x WOF strips from fabrics **G** and **H**.
- Join every strip from fabric **G** to one strip from fabric **H**.
- Sub-cut the strip sets every 5 $\frac{1}{2}$ " until you have fourteen (14) blocks.

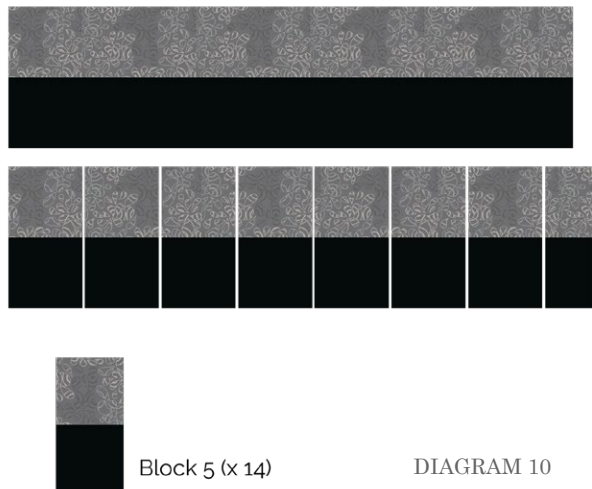


DIAGRAM 10

Block 6 (x 6)

- Take twelve (12) **BE** HST and six (6) **DF** flying geese and join them until you get six (6) block 6.



DIAGRAM 11

Block 7 (x 4)

- Take eight (8) $20\frac{1}{2}'' \times 5\frac{1}{2}''$ rectangles from fabric **A**, four (4) block 2, and eight (8) block 5.
- Join them following the diagram to get four (4) block 7.

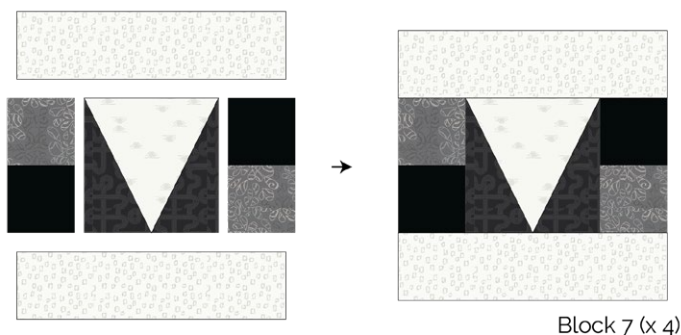


DIAGRAM 12

Block 8 (x 4)

- Take eight (8) **EC** flying geese and four (4) block 1.
- Join them following the diagram to get four (4) block 8.

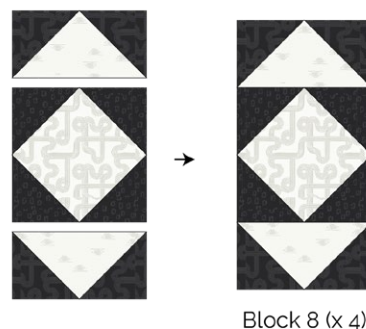


DIAGRAM 13

Block 9 (x 2)

- Take two (2) block 4 and block 5, and four (4) $10\frac{1}{2}'' \times 5\frac{1}{2}''$ rectangles from fabric **A**.
- Join them following the diagram until you get two (2) block 9.

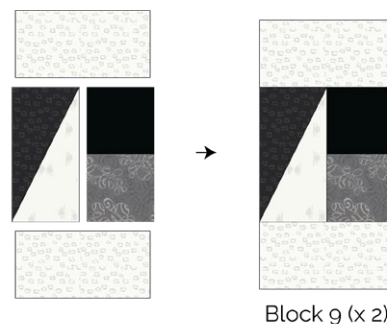
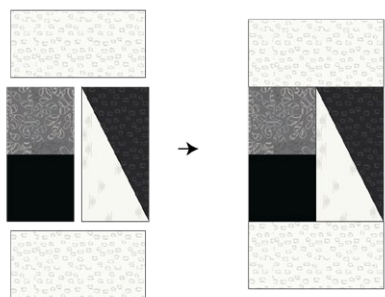


DIAGRAM 14

Block 10 (x 2)

- Take two (2) block 3 and block 5, and four (4) $10\frac{1}{2}'' \times 5\frac{1}{2}''$ rectangles from fabric **A**.
- Join them following the diagram until you get two (2) block 10.

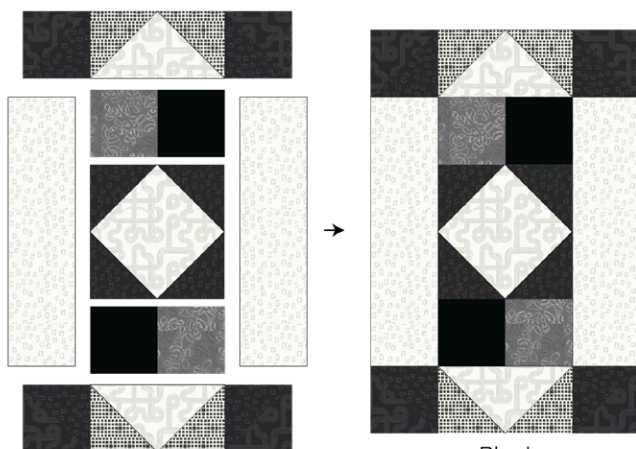


Block 10 (x 2)

DIAGRAM 15

Block 11

- Take one (1) block 1, two (2) block 5 and block 6, and two (2) $12\frac{1}{2} \times 5\frac{1}{2}$ " rectangles from fabric **A**.
- Join them following the diagram until you get block 11.

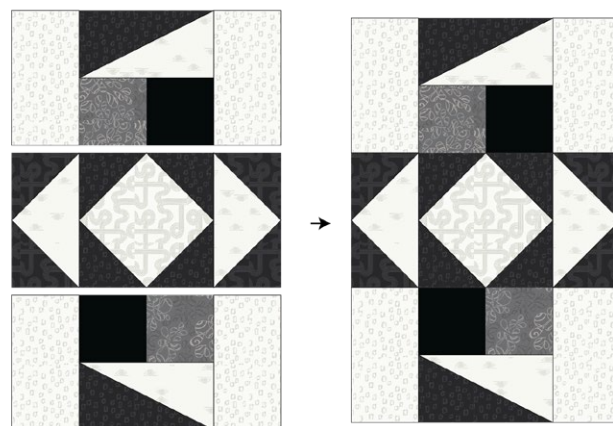


Block 11

DIAGRAM 16

Block 12 (x 2)

- Take two (2) block 8, block 9, and block 10.
- Join them following the diagram until you get two (2) block 12.



Block 12 (x 2)

DIAGRAM 17

- Take six (6) $2\frac{1}{2} \times$ WOF strips from fabric **F** and join them into a very long strip.
- Sub-cut it into two (2) $64\frac{1}{2}$ " strips, two (2) $30\frac{1}{2}$ " strips and four (4) $20\frac{1}{2}$ " strips.

QUILT TOP ASSEMBLY

Sew all rights sides together with $\frac{1}{4}$ " seam allowance.

- Join the blocks and strips from fabric **F** into rows as follows:
- Row 1: Block 6 - Block 7 - $20\frac{1}{2}$ " strip from fabric **F** - Block 8 - $20\frac{1}{2}$ " strip from fabric **F** - Block 7 - Block 6
- Row 2: $64\frac{1}{2}$ " strip from fabric **F**
- Row 3: Block 12 - $30\frac{1}{2}$ " strip from fabric **F** - Block 11 - $30\frac{1}{2}$ " strip from fabric **F** - Block 12
- Row 4: $64\frac{1}{2}$ " strip from fabric **F**
- Row 5: Block 6 - Block 7 - $20\frac{1}{2}$ " strip from fabric **F** - Block 8 - $20\frac{1}{2}$ " strip from fabric **F** - Block 7 - Block 6

Row 1



Row 2



Row 3



Row 4



Row 5



DIAGRAM 18

QUILT ASSEMBLY

Sew rights sides together.

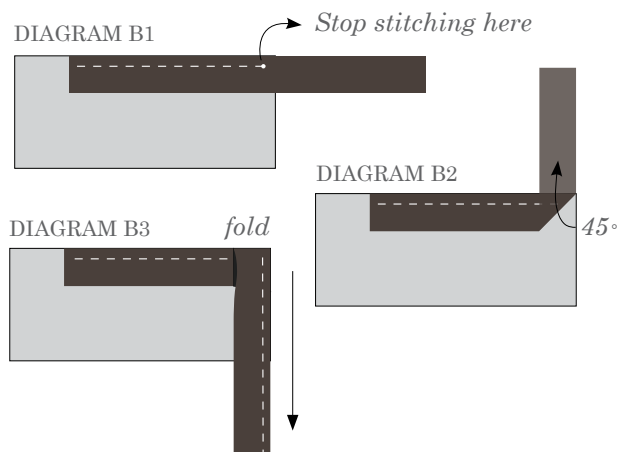
- Place BACKING FABRIC on a large surface wrong side up. Stretch it with masking tape against that surface.
- Place BATTING on top of backing fabric.
- Place TOP on top of the batting with right side facing up. Smooth away wrinkles using your hands.
- Pin all layers together and baste with basting thread, using long stitches. You can also use safety pins to join the layers.
- Machine or hand quilt starting at the center and working towards the corners. Remember that quilting motifs are a matter of personal preference. Have fun choosing yours!
- After you finished, trim excess of any fabric or batting, squaring the quilt to proceed to bind it.

- Stop stitching before you reach the last 5 or 6 inches. Cut the threads and remove the quilt from under the machine presser foot. Lay the loose ends of the binding flat along the quilt edge, folding the ends back on themselves where they meet. Press them together to form a crease. Using this crease as the stitching line, sew the two open ends of the binding with right sides together (you can help yourself marking with a pencil if the crease is difficult to see).
- Trim seam to $\frac{1}{4}$ " and press open. Complete the sewing. Turn binding to back of the quilt, turn raw edge inside and stitch by hand using blind stitch.

BINDING

Sew rights sides together.

- Cut enough strips $1\frac{1}{2}$ " wide by the width of the fabric **H** to make a final strip 286" long. Start sewing the binding strip in the middle of one of the sides of the quilt, placing the strip right side down and leaving an approximated 5" tail. Sew with $\frac{1}{4}$ " seam allowance (using straight stitch), aligning the strip's raw edge with the quilt top's raw edge.
- Stop stitching $\frac{1}{4}$ " before the edge of the quilt (DIAGRAM B 1). Clip the threads. Remove the quilt from under the machine presser foot. Fold the strip in a motion of 45° and upward, pressing with your fingers (DIAGRAM B2). Hold this fold with your finger, bring the strip down in line with the next edge, making a horizontal fold that aligns with the top edge of the quilt (DIAGRAM B3). Start sewing at $\frac{1}{4}$ " of the border, stitching all the layers. Do the same in the four corners of the quilt.



XXXXXXXXXXXXXXXXXXXXXXXXXXXXXXXXXXXX

*Congratulations
& enjoy*

XXXXXXXXXXXXXXXXXXXXXXXXXXXXXXXXXXXX



artgalleryfabrics.com

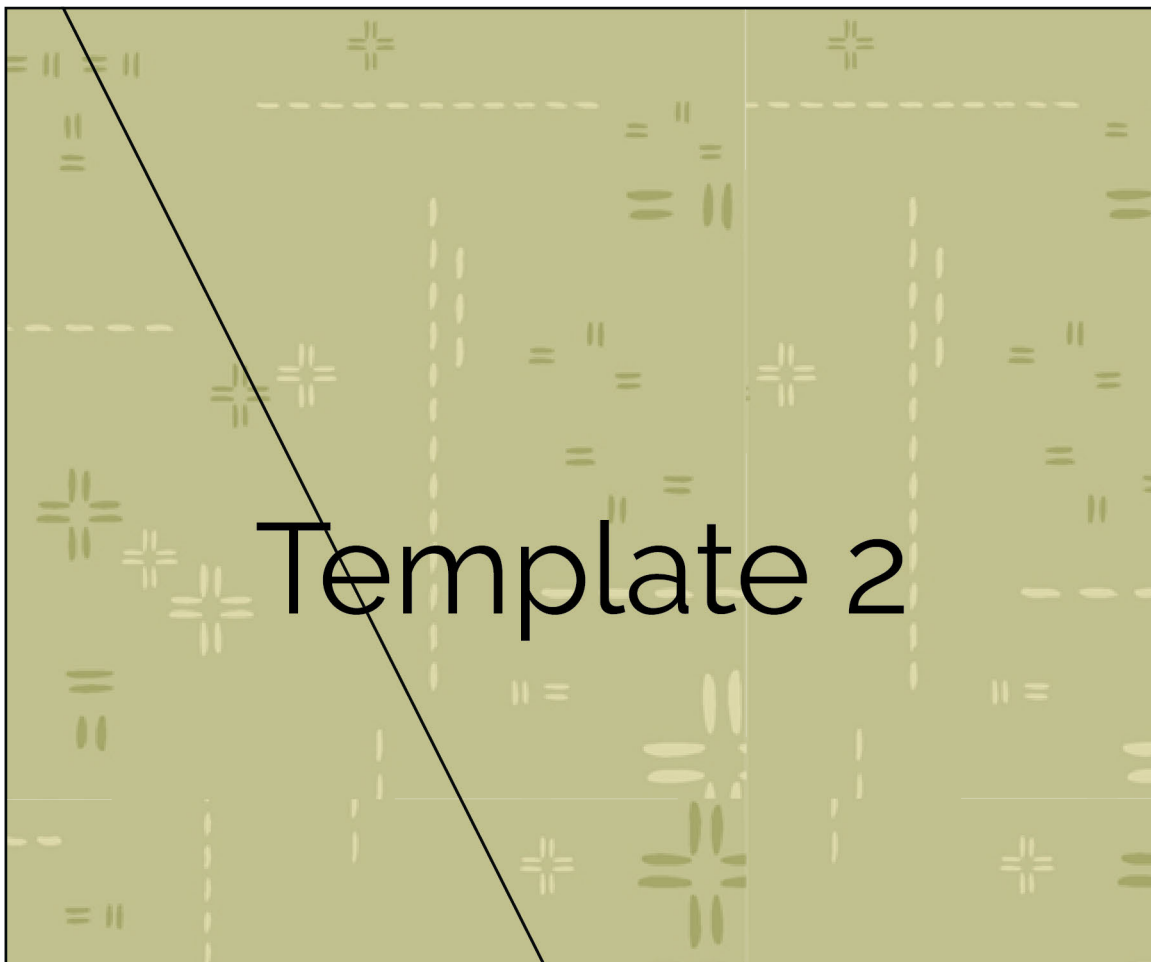
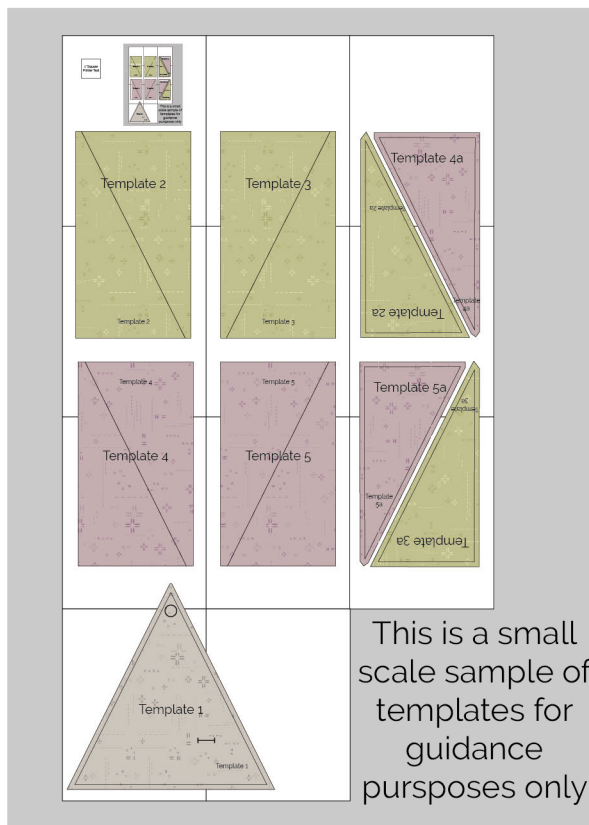
NOTE: While all possible care has been taken to ensure the accuracy of this pattern, We are not responsible for printing errors or the way in which individual work varies.

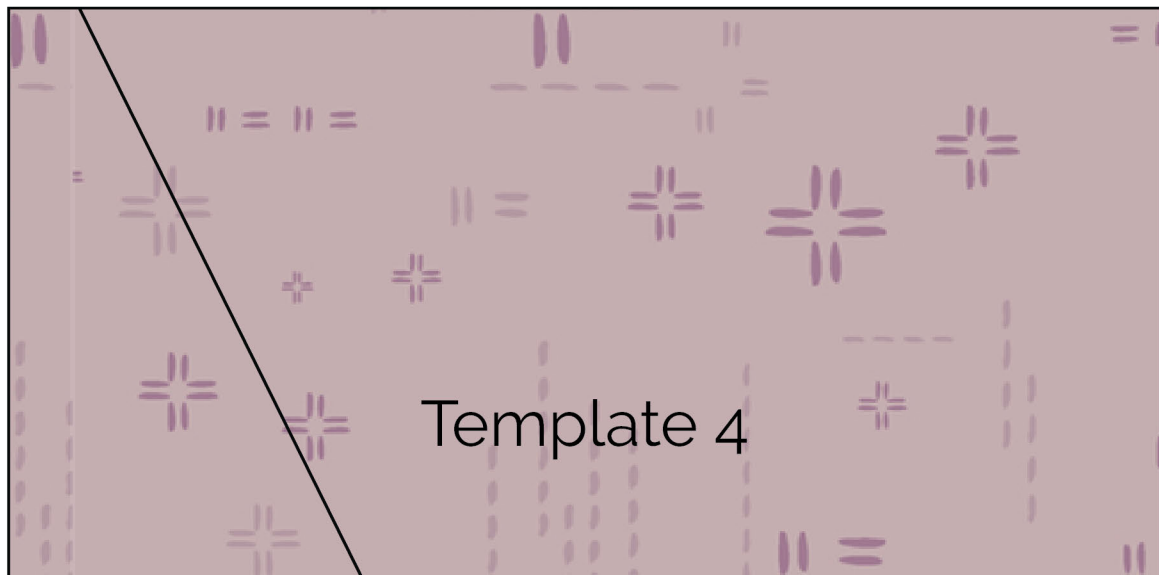
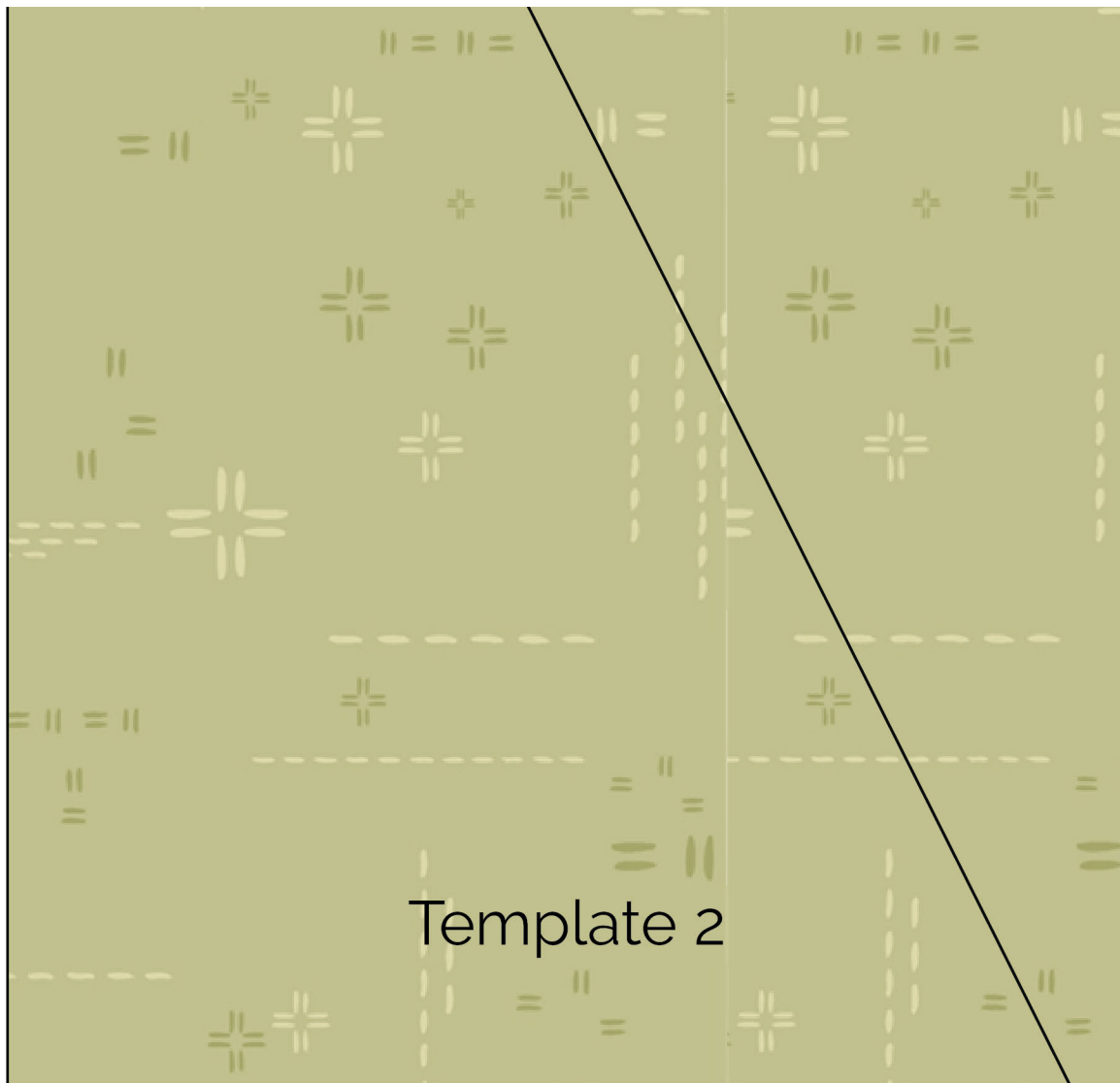
Please read instructions carefully before starting the construction of this quilt. If desired, wash and iron your fabrics before starting to cut.

© 2021 Courtesy of Art Gallery Quilts LLC. All Rights Reserved.

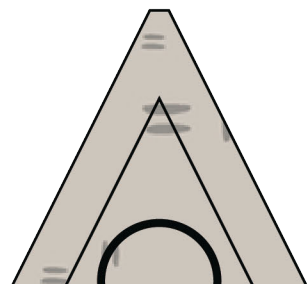
TEMPLATES

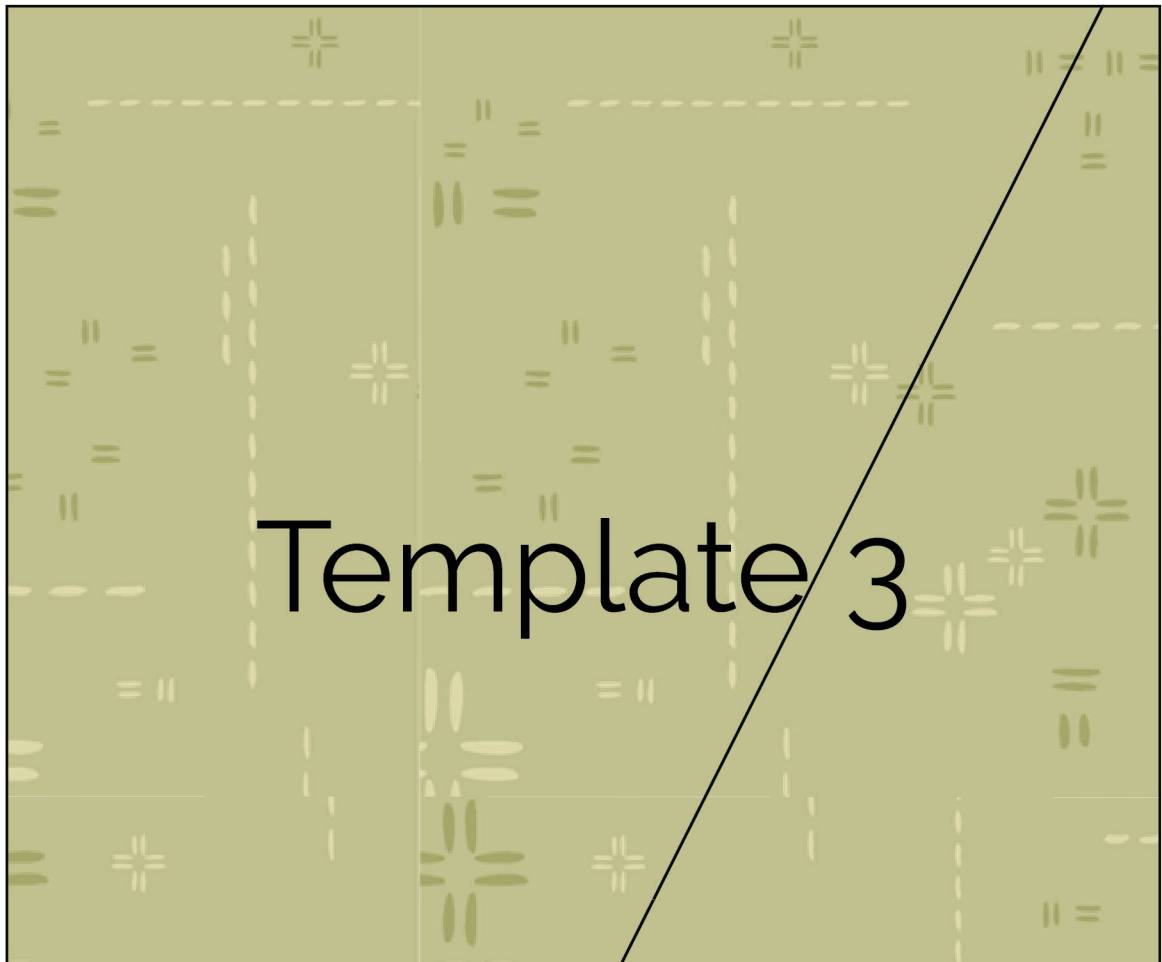
1" Square
Printer Test

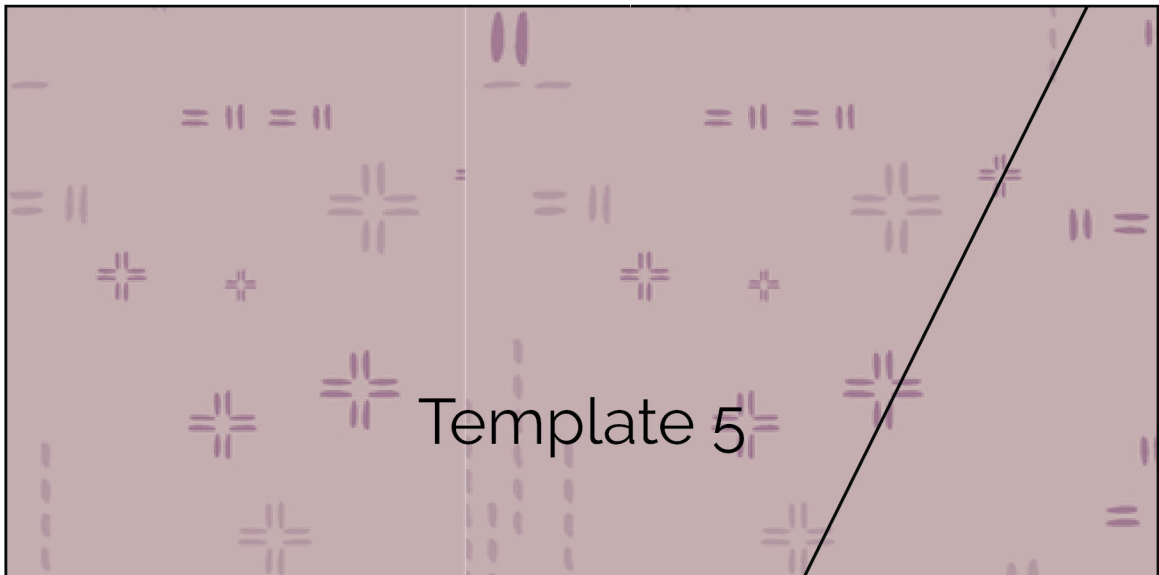
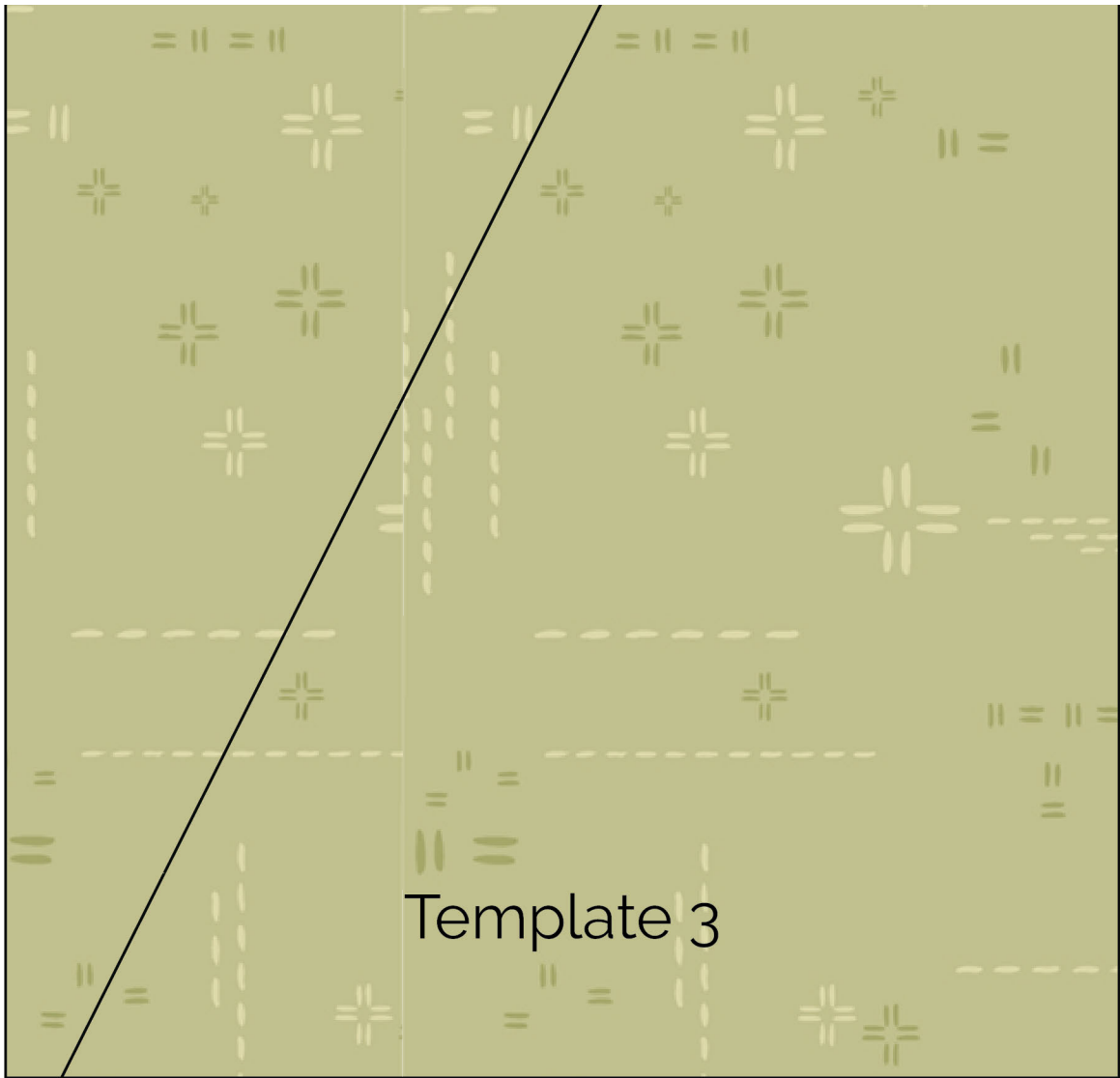




Template 4







Template 5

