

A quilted mat with a dark green, diamond-patterned background and a red border. In the center, two white swans are depicted, facing each other. The swans have red and green patterns on their bodies and heads. A pair of white shoes with red and green floral patterns is visible in the top right corner.

XXXXXXXXXXXXXXXXXXXXXXXXXXXX

A DIVISION OF AGF

Mr. Swan RUG



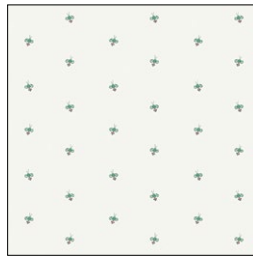
DESIGNED BY AGFstudio

Flight PATH

FABRICS DESIGNED BY JESSICA SWIFT



FLP-66810
BREEZEFLIGHT



FLP-66803
LIGHT THE WAY

ADDITIONAL BLENDERS FOR THIS PROJECT



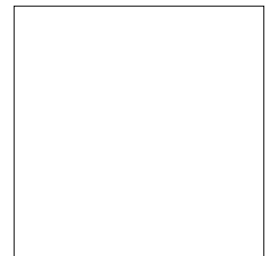
PE-461
TIGERLILY



PE-449
MANDARIN



PE-417
EMERALD



PE-433
SNOW





FINISHED SIZE | 22" x 14"

FABRIC REQUIREMENTS

Fabric A	FLP-66810	1 yd.
Fabric B	FLP-66803	FQ.
Fabric C	PE-461	$\frac{1}{4}$ yd.
Fabric D	PE-449	$\frac{1}{8}$ yd.
Fabric E	PE-417	$\frac{1}{8}$ yd.
Fabric F	PE-433	FQ.

BACKING FABRIC

FLP-66810 $\frac{1}{2}$ yd (*Suggested*)

BINDING FABRIC

Fabric **C** PE-461 (*Included*)

Additional Materials:

- Black embroidery thread.
- Steam-a-seam.
- Non-slip rug tape.

CUTTING DIRECTIONS

*$\frac{1}{4}$ " seam allowances are included.
WOF means width of fabric.*

- One (1) 22 $\frac{1}{2}$ " x 14 $\frac{1}{2}$ " rectangle from fabric **A**.
- One (1) swan template 1a from fabric **B**.
- One (1) swan template 1b from fabric **B**.
- One (1) template 4a from fabric **C**.
- One (1) template 5a from fabric **C**.
- One (1) template 6a from fabric **C**.
- One (1) template 7a from fabric **C**.
- One (1) template 8a from fabric **C**.
- One (1) template 9a from fabric **C**.
- One (1) template 10a from fabric **C**.
- One (1) template 11a from fabric **C**.
- One (1) template 4b from fabric **C**.
- One (1) template 5b from fabric **C**.
- One (1) template 6b from fabric **C**.
- One (1) template 7b from fabric **C**.
- One (1) template 8b from fabric **C**.
- One (1) template 9b from fabric **C**.
- One (1) template 10b from fabric **C**.
- One (1) template 11b from fabric **C**.
- One (1) template 2a from fabric **D**.
- One (1) template 2b from fabric **D**.
- One (1) template 3a from fabric **E**.
- One (1) template 3b from fabric **E**.
- One (1) swan template 1a from fabric **F**.
- One (1) swan template 1b from fabric **F**.

CONSTRUCTION

Sew all rights sides together with $\frac{1}{4}$ " seam allowance.

- Take one (1) $22\frac{1}{2}$ " x $14\frac{1}{2}$ " rectangle from fabric **A**, batting and backing fabric and quilt as desired.

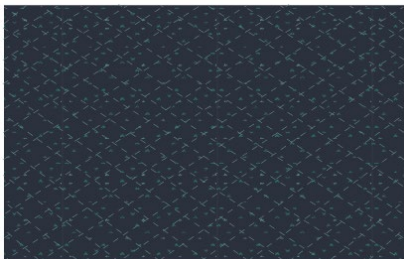


DIAGRAM 1

- Take fabric **F** swan templates and place them on the wrong side of fabric **B** swan templates.
- This will make sure fabric **B** will not be seen through.
- For better result, place steam-a-seam on each fabric template cutout.
- Place the swans at a $\frac{3}{4}$ " distance from each side and $3\frac{1}{4}$ " from the bottom of the fabric **A** quilted rectangle, the swan templates 1a and 1b from fabric **B**.
- Make sure to measure it following the diagram below.
- Edge stitch all around the swan template pieces.

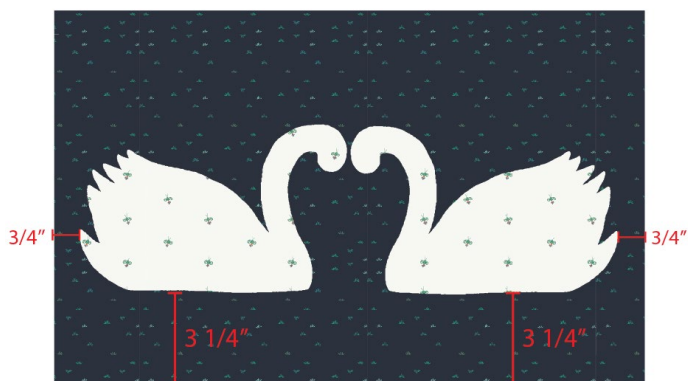


DIAGRAM 2

- Now, place template 2a and 2b and stitch on the edge to hold the pieces.



DIAGRAM 3

- Place template 3a and 3b cutout pieces right on the head of the swans.
- To make the eyes, use black embroidery thread.



DIAGRAM 4

- Now, place templates 4a-11a and 4b-11b which will be the feathers. Use the image below as your guide, but feel free to play around with the distance and position.
- Edge stitch all pieces using blanket stitch or regular top stitch.

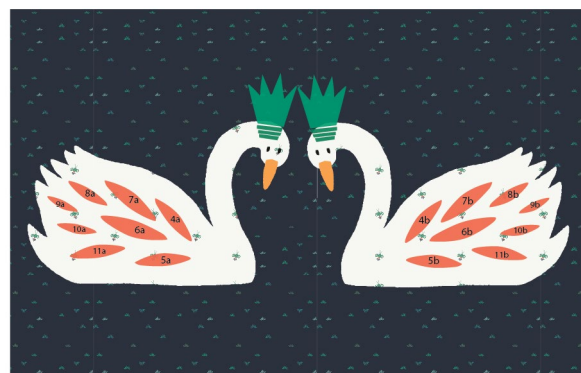


DIAGRAM 5

QUILT ASSEMBLY

Sew rights sides together.

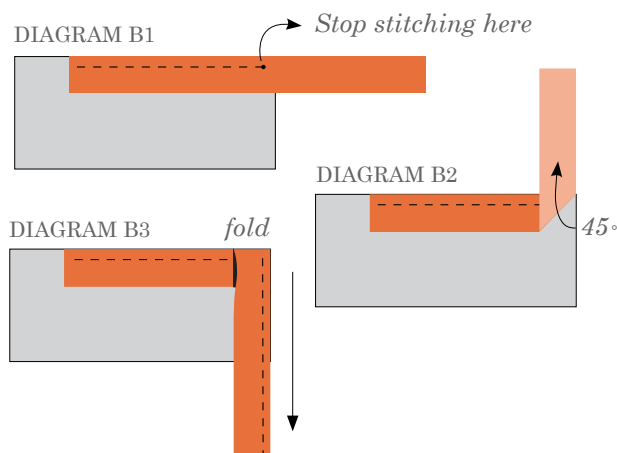
- Place BACKING FABRIC on a large surface wrong side up. Stretch it with masking tape against that surface.
- Place BATTING on top of backing fabric.
- Place TOP on top of the batting with right side facing up. Smooth away wrinkles using your hands.
- Pin all layers together and baste with basting thread, using long stitches. You can also use safety pins to join the layers.
- Machine or hand quilt starting at the center and working towards the corners. Remember that quilting motifs are a matter of personal preference. Have fun choosing yours!
- After you finished, trim excess of any fabric or batting, squaring the quilt to proceed to bind it.

- Stop stitching before you reach the last 5 or 6 inches. Cut the threads and remove the quilt from under the machine presser foot. Lay the loose ends of the binding flat along the quilt edge, folding the ends back on themselves where they meet. Press them together to form a crease. Using this crease as the stitching line, sew the two open ends of the binding with right sides together (you can help yourself marking with a pencil if the crease is difficult to see).
- Trim seam to $\frac{1}{4}$ " and press open. Complete the sewing. Turn binding to back of the quilt, turn raw edge inside and stitch by hand using blind stitch.

BINDING

Sew rights sides together.

- Cut enough strips $1\frac{1}{2}$ " wide by the width of the fabric **N** to make a final strip 82" long. Start sewing the binding strip in the middle of one of the sides of the quilt, placing the strip right side down and leaving an approximated 5" tail. Sew with $\frac{1}{4}$ " seam allowance (using straight stitch), aligning the strip's raw edge with the quilt top's raw edge.
- Stop stitching $\frac{1}{4}$ " before the edge of the quilt (DIAGRAM B 1). Clip the threads. Remove the quilt from under the machine presser foot. Fold the strip in a motion of 45° and upward, pressing with your fingers (DIAGRAM B2). Hold this fold with your finger, bring the strip down in line with the next edge, making a horizontal fold that aligns with the top edge of the quilt (DIAGRAM B3). Start sewing at $\frac{1}{4}$ " of the border, stitching all the layers. Do the same in the four corners of the quilt.



XXXXXXXXXXXXXXXXXXXXXXXXXXXXXXXXXXXX

*Congratulations
& enjoy*

XXXXXXXXXXXXXXXXXXXXXXXXXXXXXXXXXXXX



artgalleryfabrics.com

NOTE: While all possible care has been taken to ensure the accuracy of this pattern, We are not responsible for printing errors or the way in which individual work varies.

Please read instructions carefully before starting the construction of this quilt. If desired, wash and iron your fabrics before starting to cut.

© 2022 Courtesy of Art Gallery Quilts LLC. All Rights Reserved.

