

X
X
X
X
X
X
X
X
X
X
X
X

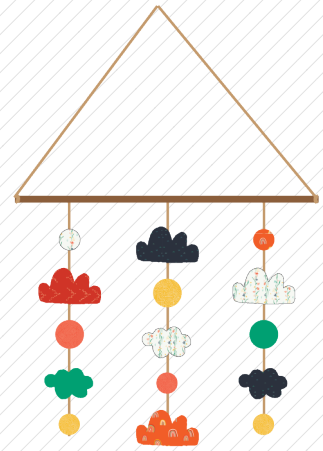
A collection of colorful, handcrafted fabric toys hanging from a bamboo stick against a dark background. The toys include various shapes like clouds, spheres, and abstract forms in colors like red, yellow, green, orange, and black, some with patterns like polka dots or floral designs.

XXXXXXXXXXXXXXXXXXXXXXXXXXXX

A DIVISION OF AGF

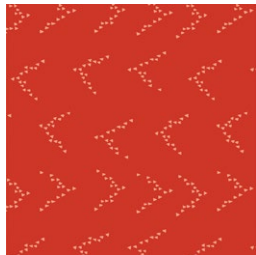
Happy Cloud MOBILE

DESIGNED BY AGFstudio

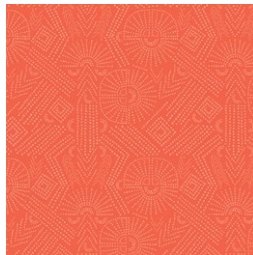


Flight PATH

FABRICS DESIGNED BY JESSICA SWIFT



FLP-66804
FOLLOW THE
LEADER



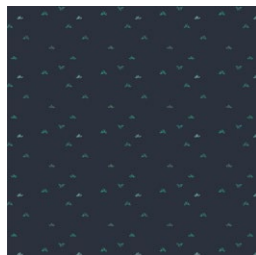
FLP-66806
YOUR PATH CORAL



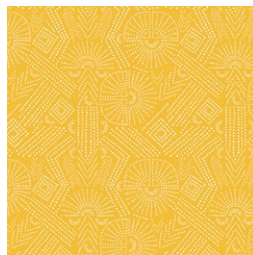
FLP-66808
GLORIOUS MORNING



FLP-66807
FORTUNATE SPIRITED



FLP-66810
BREEZEFLIGHT



FLP-66801
YOUR PATH SUNFLOWER



PE-417
EMERALD



FINISHED SIZE | 30" x 40"

FABRIC REQUIREMENTS

Fabric A	FLP-66804	F8
Fabric B	PE-417	F8
Fabric C	FLP-66806	F8
Fabric D	FLP-66808	FQ
Fabric E	FLP-66807	F8
Fabric F	FLP-66810	FQ
Fabric F	FLP-66801	F8

Additional Materials

- Embroidery thread.
- 19" wooden dowel.
- Pillow Stuffing.

CUTTING DIRECTIONS

*¼" seam allowances are included.
WOF means width of fabric.*

- Two (2) template 1 from fabric **A**.
- Two (2) template 2 from fabric **B**.
- Two (2) template 3 from fabric **B**.
- Two (2) template 3 from fabric **C**.
- Two (2) template 4 from fabric **C**.
- Two (2) template 1 from fabric **D**.
- Two (2) template 2 from fabric **D**.
- Two (2) template 4 from fabric **D**.
- Two (2) template 1 from fabric **E**.
- Two (2) template 4 from fabric **E**.
- Two (2) template 1 from fabric **F**.
- Two (2) template 2 from fabric **F**.
- Two (2) template 3 from fabric **G**.
- Four (4) template 4 from fabric **G**.

CONSTRUCTION

Sew all rights sides together with ¼" seam allowance.

- Take two (2) template 1 from fabric **A** right sides facing and sew around the edge leaving about 1" of opening.

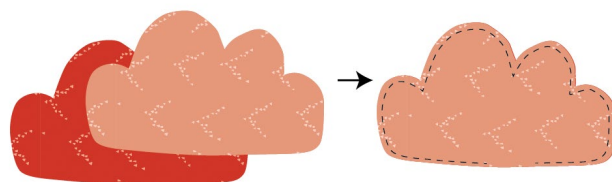


DIAGRAM 1

- For better results, take a small pair of scissors and snip on the convex areas and do notches on the concave areas of the cloud.

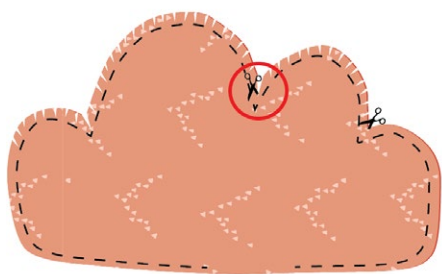


DIAGRAM 2

- Now, flip your piece inside out and press.
- Then, fill your cloud with pillow stuffing.
- Close the opening with needle and matching thread.

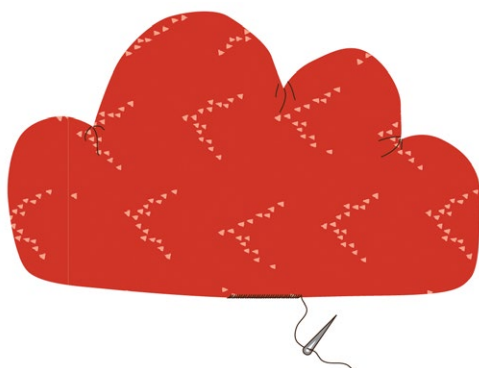


DIAGRAM 3

- Repeat the same process for all of your template pieces.

- Take your desired color of embroidery thread and needle and thread through the center of your pieces carefully.
- If you think the pieces are slidding, make a small knot with the embroidery thread at the bottom of each piece.

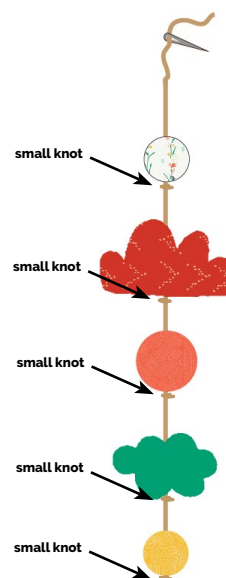


DIAGRAM 4

- Once you have arranged your pieces, space them out how you please and cut the thread.
- Repeat the same for the remaining pieces.

ASSEMBLING THE MOBILE

- Take your 19" wooden dowel and tie embroidery thread on one of the long stick.
- To form a hanger, cut the string to desired length and tie to the remaining end.

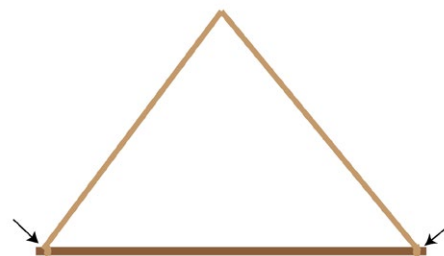
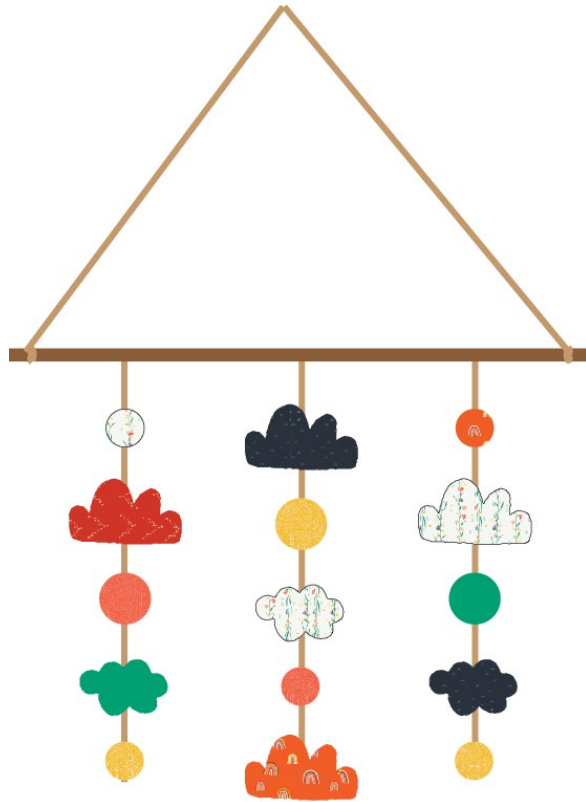


DIAGRAM 5

- Now, tie the pieces onto the dowel and hang your mobile, adjust the distance from each and enjoy!



XXXXXXXXXXXXXXXXXXXXXXXXXXXXXXXXXXXX

*Congratulations
& enjoy*

XXXXXXXXXXXXXXXXXXXXXXXXXXXXXXXXXXXX



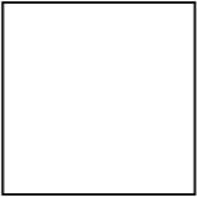
artgalleryfabrics.com

NOTE: While all possible care has been taken to ensure the accuracy of this pattern, We are not responsible for printing errors or the way in which individual work varies.

Please read instructions carefully before starting the construction of this quilt. If desired, wash and iron your fabrics before starting to cut.

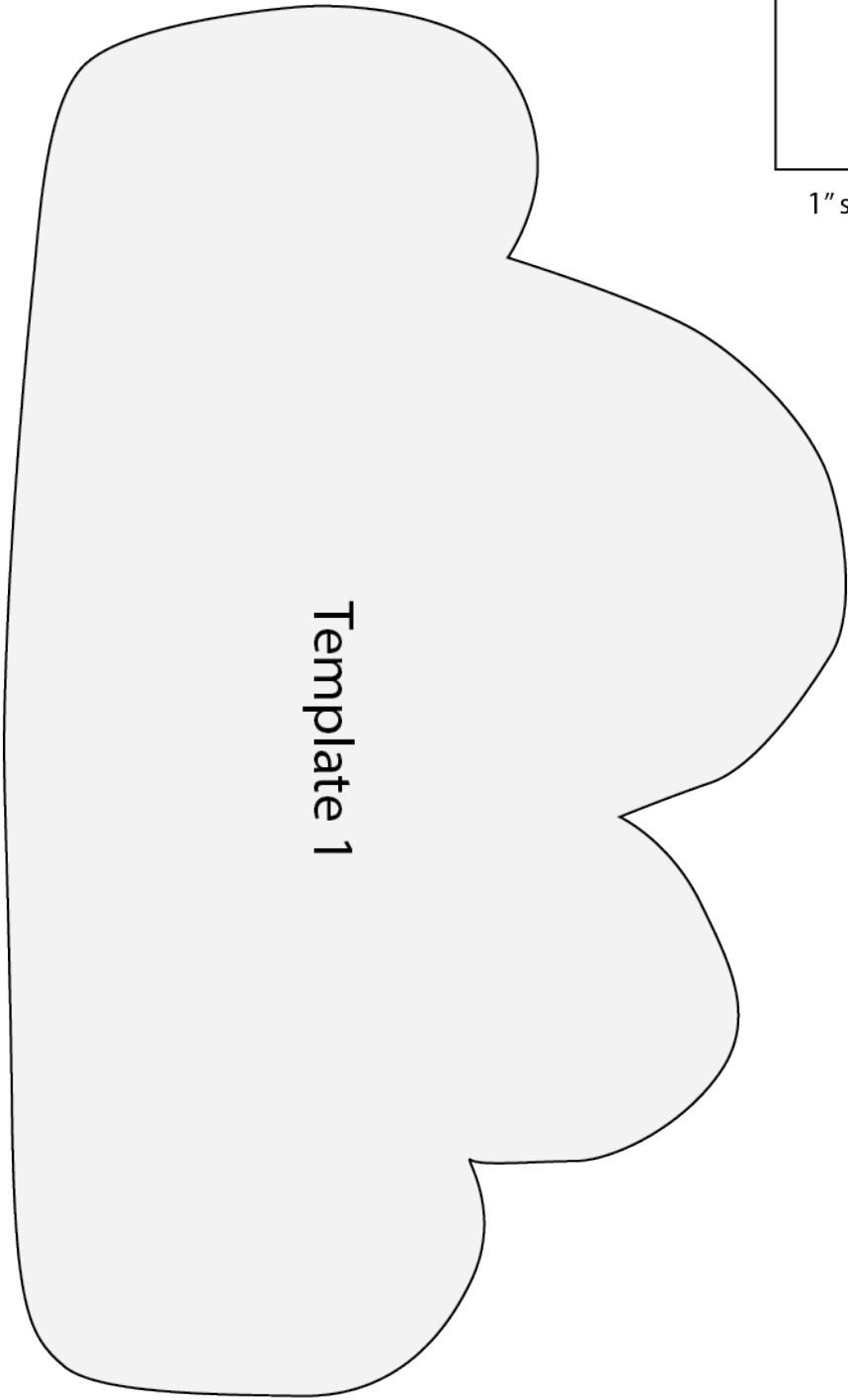
© 2022 Courtesy of Art Gallery Quilts LLC. All Rights Reserved.

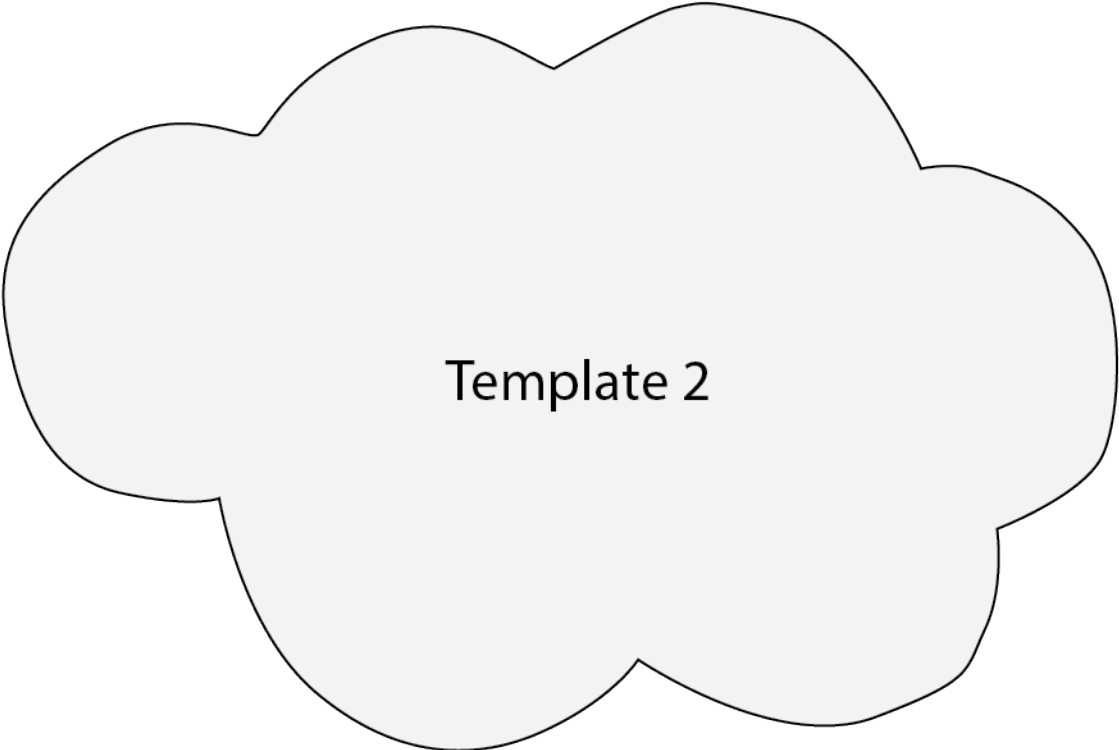
Printer Test



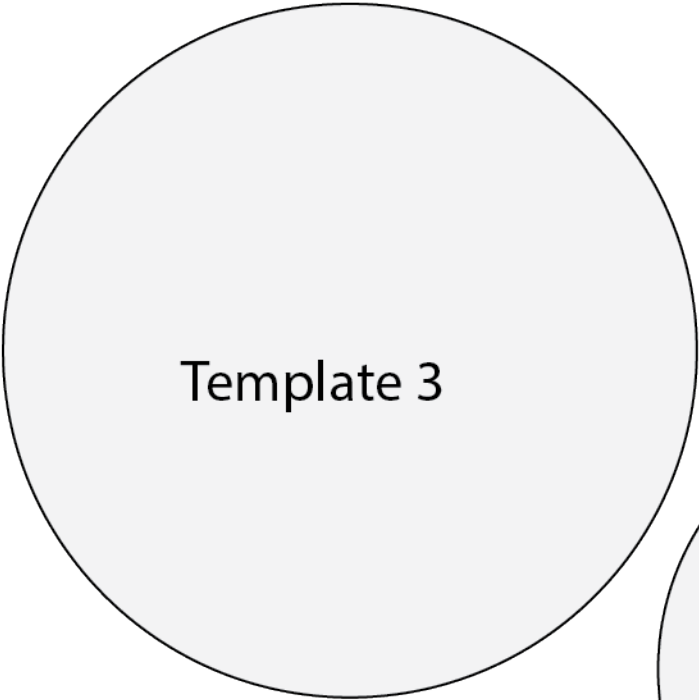
1" square

Template 1

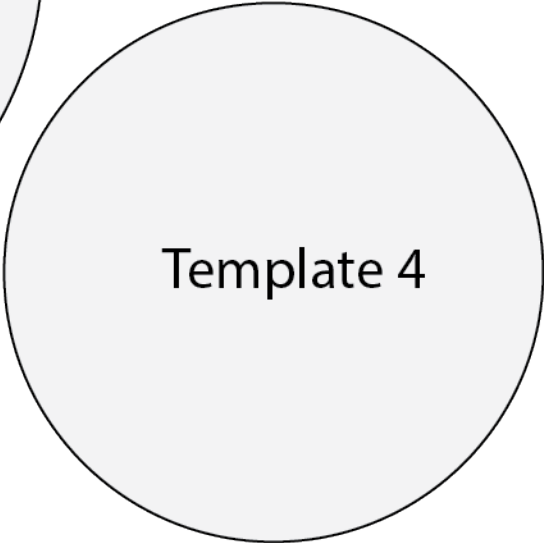




Template 2



Template 3



Template 4