

X  
X  
X  
X  
X  
X  
X  
X  
X  
X  
X  
X



# ANGLES

A DIVISION OF AGF



# BE HAPPY

PILLOWS

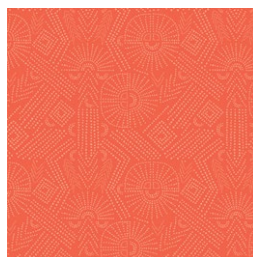
DESIGNED BY *AGEstudio*



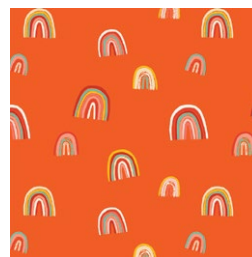
FABRICS DESIGNED BY JESSICA SWIFT



**FLP-66803**  
LIGHT THE WAY



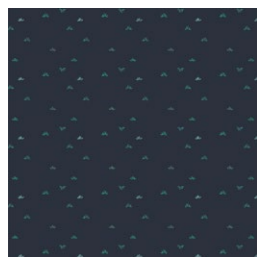
**FLP-66806**  
YOUR PATH CORAL



**FLP-66807**  
FORTUNATE SPIRITED



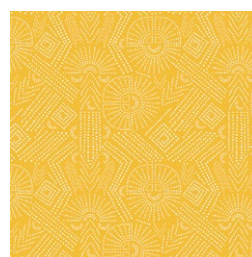
**FLP-66808**  
GLORIOUS MORNING



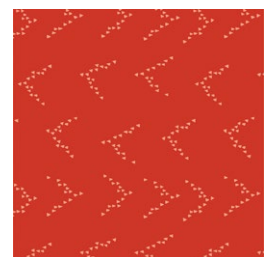
**FLP-66810**  
BREEZEFLIGHT



**FLP-66809**  
YOUR PATH CLOVER



**FLP-66801**  
YOUR PATH SUNFLOWER



**FLP-66804**  
FOLLOW THE LEADER



**FLP-66802**  
JUBILEE MIDNIGHT





## ADDITIONAL BLENDERS FOR THIS PROJECT



PE-422  
CHOCOLATE



PE-478  
JADE CREAM



PE-459  
TURMERIC



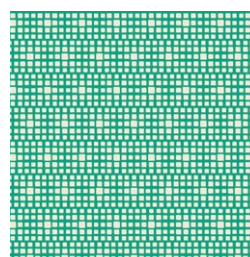
PE-444  
PEACH SHERBET



PE-461  
TIGERLILY



FE-545  
ORANGINE



CST-3108  
KING'S ROAD TURQUOISE





## PILLOWS

FINISHED SIZE | 10" x 10"

### FABRIC REQUIREMENTS

#### Pillow 1

Fabric <b>A</b>	FLP-66803	$\frac{3}{8}$ yd.
Fabric <b>B</b>	FLP-66806	F8.
Fabric <b>C</b>	PE-422	F8.
Fabric <b>D</b>	FLP-66807	F8.

#### Pillow 2

Fabric <b>A</b>	FLP-66807	$\frac{3}{8}$ .
Fabric <b>B</b>	FLP-66805	F8.
Fabric <b>C</b>	FLP-66804	F8.
Fabric <b>D</b>	FLP-66811	F8.
Fabric <b>E</b>	PE-417	F8.
Fabric <b>F</b>	FLP-66800	F8.

#### Pillow 3

Fabric <b>A</b>	PE-444	$\frac{3}{8}$ .
Fabric <b>B</b>	FLP-66809	F8.
Fabric <b>C</b>	FLP-66801	F8.
Fabric <b>D</b>	FLP-668	F8.
Fabric <b>E</b>	FLP-66804	F8.
Fabric <b>F</b>	FLP-66802	F8.

#### Pillow 4

Fabric <b>A</b>	FLP-66810	$\frac{3}{8}$ .
Fabric <b>B</b>	PE-459	F8.
Fabric <b>C</b>	FLP-66801	F8.
Fabric <b>D</b>	FLP-66806	F8.
Fabric <b>E</b>	FLP-66804	F8.
Fabric <b>F</b>	PE-461	F8.
Fabric <b>G</b>	FLP-66804	F8.
Fabric <b>H</b>	FLP-66802	F8.

### CUTTING DIRECTIONS

*$\frac{1}{4}$ " seam allowances are included.  
WOF means width of fabric.*

#### Pillow 1

- One (1) 10½" square from fabric **A**.
- Two (2) 10½" x 8" rectangles from fabric **A**. (Pillow backing)
- One (1) template M1 from fabric **B**.
- One (1) template M2 from fabric **C**.
- One (1) template M3 from fabric **D**.

#### Pillow 2

- One (1) 10½" square from fabric **A**.
- Two (2) 10½" x 8" rectangles from fabric **A**. (Pillow backing)
- One (1) template S1 from fabric **B**.
- One (1) template S2 from fabric **C**.
- One (1) template S3 from fabric **D**.
- One (1) template S4 from fabric **E**.
- One (1) template S5 from fabric **F**.

#### Pillow 3

- One (1) 10½" square from fabric **A**.
- Two (2) 10½" x 8" rectangles from fabric **A**. (Pillow backing)
- One (1) template A1 from fabric **B**.
- One (1) template A2 from fabric **C**.
- One (1) template A3 from fabric **D**.
- One (1) template A4 from fabric **E**.
- One (1) template A5 from fabric **F**.

#### Pillow 4

- One (1) 11½" x 5¾" rectangle from fabric **A**.
- Two (2) 10½" x 8" rectangles from fabric **A**. (Pillow backing)
- One (1) 11½" x 1½" strip from fabrics **B, C, D, E, F, G, H**.



## CONSTRUCTION

*Sew all rights sides together with  $\frac{1}{4}$ " seam allowance.*

### Pillow 1

- Using steam a seam place template M1 from fabric **B** on top of a  $10\frac{1}{2}$ " square from fabric **A**, then place template M2 from fabric **C** towards the bottom of template M1. See diagram below for reference.

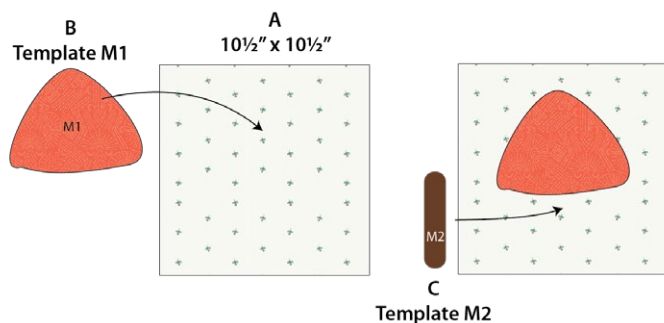


DIAGRAM 1

- Place template M3 from fabric **D** on top and use your favorite decorative stitch to sew all around template M3, and M2. See diagram below for reference. Take two (2)  $10\frac{1}{2}$ " x 8 rectangles from fabric **A** to construct the back of this pillow use Instructions located in page 7 of this document in the back of the pillow section.

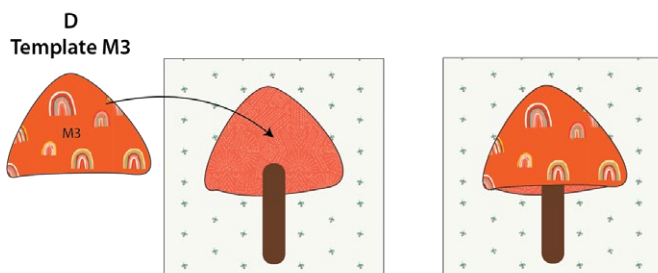


DIAGRAM 2

### Pillow 2

- Using steam a seam Place template S1 from fabric **B** on top of a  $10\frac{1}{2}$ " square from fabric **A**, then place template S2 from fabric **C**, pin it and using your favorite decorative stitch sew all around it, then add template S3 from fabric **D**, then template S4 from fabric **E**, and lastly template S5 from fabric **F**. Remember to sew each template with the stitch of your choice. See diagram 3 for reference.
- Take two (2)  $10\frac{1}{2}$ " x 8 rectangles from fabric **A** and use Instructions located in page 7 of this document in the back of the pillow section.

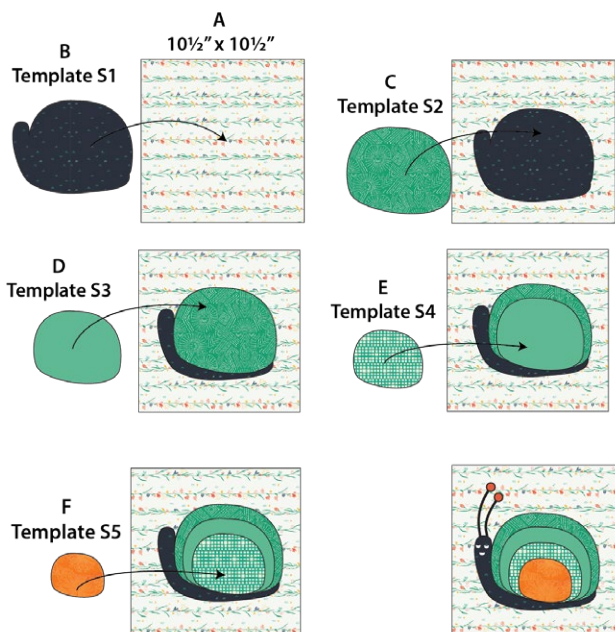


DIAGRAM 3

### Pillow 3

- Using steam a seam place template A1 from fabric **B** on top of a  $10\frac{1}{2}$ " square from fabric **A**, then place template A2 from fabric **C**, pin it and using your favorite decorative stitch sew all around it, then template A3 from fabric **D**, then template A4 from fabric **E**, and lastly template A5 from fabric **F**. Remember to sew each template with the stitch of your choice. Take two (2)  $10\frac{1}{2}$ " x 8 rectangles from fabric **A** and use Instructions located in page 7 of this document in the back of the pillow section.

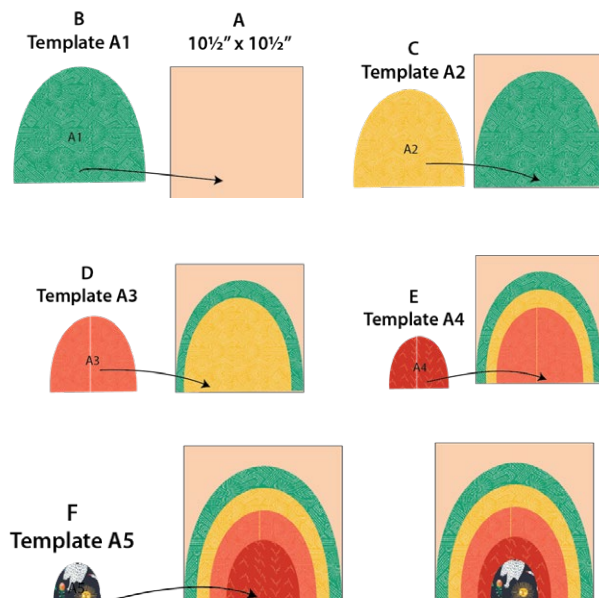


DIAGRAM 4



## Pillow 4

- Join one (1)  $11\frac{1}{2}'' \times 5\frac{3}{4}''$  rectangle from fabric **A** and one (1)  $11\frac{1}{2}'' \times 1\frac{1}{2}''$  strip from fabric **B**, press seams open and measure around  $\frac{3}{4}''$  down from the top left corner of fabric **B** and make a mark, then draw a line from that mark to the top right corner of the same fabric.
- With your rotary cutter cut on the drawn line. See diagram below for reference.

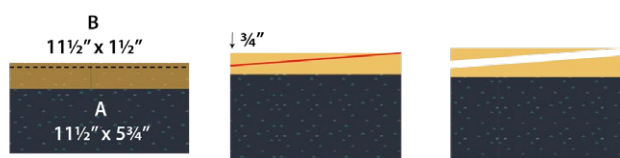


DIAGRAM 6

- Sew one (1)  $11\frac{1}{2}'' \times 1\frac{1}{2}''$  strip from fabric **C**, press seams open and measure around  $\frac{3}{4}''$  down from the top right corner of fabric **C** and make a mark, then draw a line from that mark to the top left corner of the same fabric.
- With your rotary cutter cut on the drawn line. See diagram below for reference.

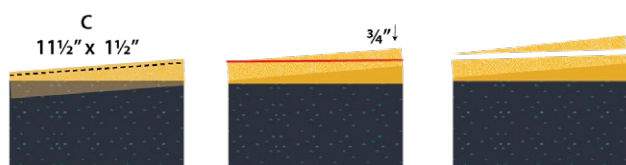


DIAGRAM 7

- Sew one (1)  $11\frac{1}{2}'' \times 1\frac{1}{2}''$  strip from fabric **D**, press seams open and measure around  $\frac{3}{4}''$  down from the top left corner of fabric **D** and make a mark, then draw a line from that mark to the top right corner of the same fabric.
- With your rotary cutter cut on the drawn line. See diagram below for reference.

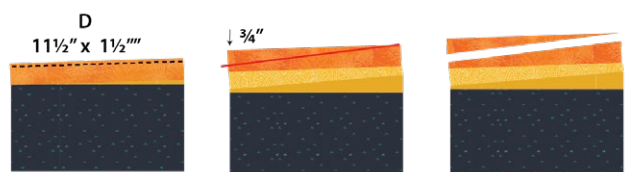


DIAGRAM 8

- Sew one (1)  $11\frac{1}{2}'' \times 1\frac{1}{2}''$  strip from fabric **D**, press seams open and measure around  $\frac{3}{4}''$  down from the top right corner of fabric **D** and make a mark, then draw a line from that mark to the top left corner of the same fabric.
- With your rotary cutter cut on the drawn line. See diagram below for reference.

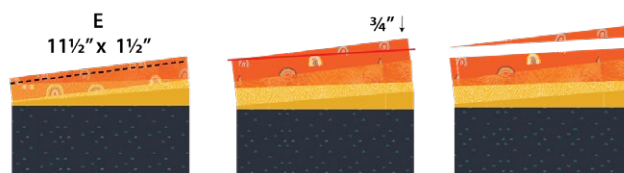


DIAGRAM 9

- Sew one (1)  $11\frac{1}{2}'' \times 1\frac{1}{2}''$  strip from fabric **F**, press seams open and measure around  $\frac{3}{4}''$  down from the top left corner of fabric **F** and make a mark, then draw a line from that mark to the top right corner of the same fabric.
- With your rotary cutter cut on the drawn line. See diagram below for reference.

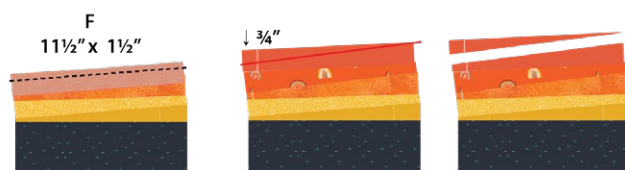


DIAGRAM 10

- Sew one (1)  $11\frac{1}{2}'' \times 1\frac{1}{2}''$  strip from fabric **G**, press seams open and measure around  $\frac{3}{4}''$  down from the top right corner of fabric **G** and make a mark, then draw a line from that mark to the top left corner of the same fabric.
- With your rotary cutter cut on the drawn line. See diagram below for reference.

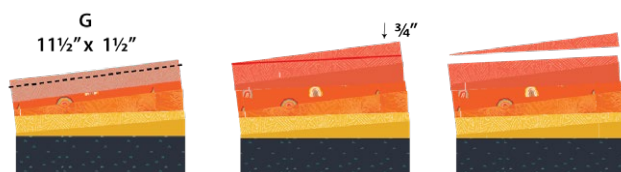


DIAGRAM 11



- Sew one (1)  $11\frac{1}{2}$ " x  $1\frac{1}{2}$ " strip from fabric **H**, press seams open and trim to a  $10\frac{1}{2}$ " square.
- Quilt as desired and take two (2)  $10\frac{1}{2}$ " x 8" rectangles from fabric **A** See diagram below for reference.
- To construct the back of this pillow follow the back of pillow instructions.

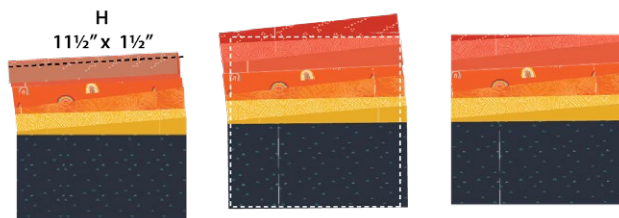


DIAGRAM 12

## BACK OF PILLOW

- Take both  $10\frac{1}{2}$ " x 8" rectangles from fabric **A**.
- Fold one bottom edge  $\frac{1}{2}$ " towards the wrong side of the fabric of one of the rectangle.
- Fold the same edge  $\frac{1}{2}$ " again and edge stitch the fold in place to have a clean edge.
- Repeat the same for the top edge of the bottom piece.
- Take the quilted pillow top and lay it flat right side up.
- Take one rectangle from fabric **A** and align it wrong side up to the right side of the pillow top.
- Take the other rectangle from fabric **A** and align it wrong side up to the left side of the pillow top.
- Pin the three pieces in place and sew around the edges at  $\frac{1}{4}$ ".
- Clip the corners and flip the piece to the right side of the fabric.
- Fill the pillow with a 10" x 10" pillow form and enjoy!

Congratulations  
& enjoy



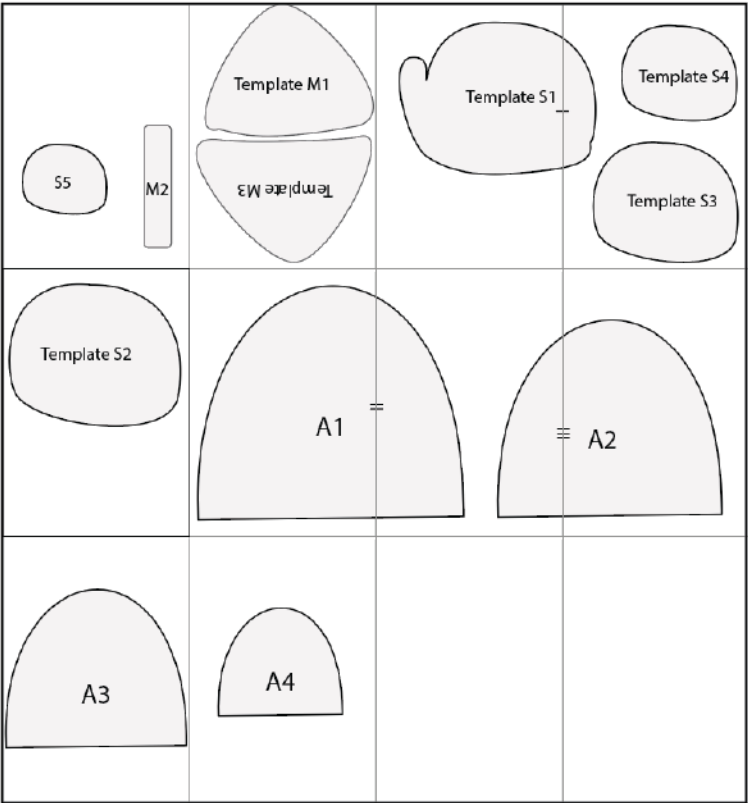
[artgalleryfabrics.com](http://artgalleryfabrics.com)

NOTE: While all possible care has been taken to ensure the accuracy of this pattern, We are not responsible for printing errors or the way in which individual work varies.

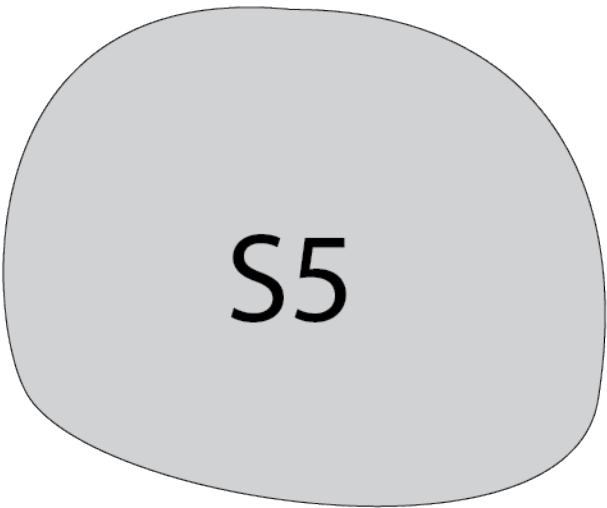
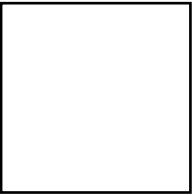
Please read instructions carefully before starting the construction of this quilt. If desired, wash and iron your fabrics before starting to cut.



TEMPLATES



1" Test square





**Template M1**

**Template M3**



# Template S1





Template S4



Template S3

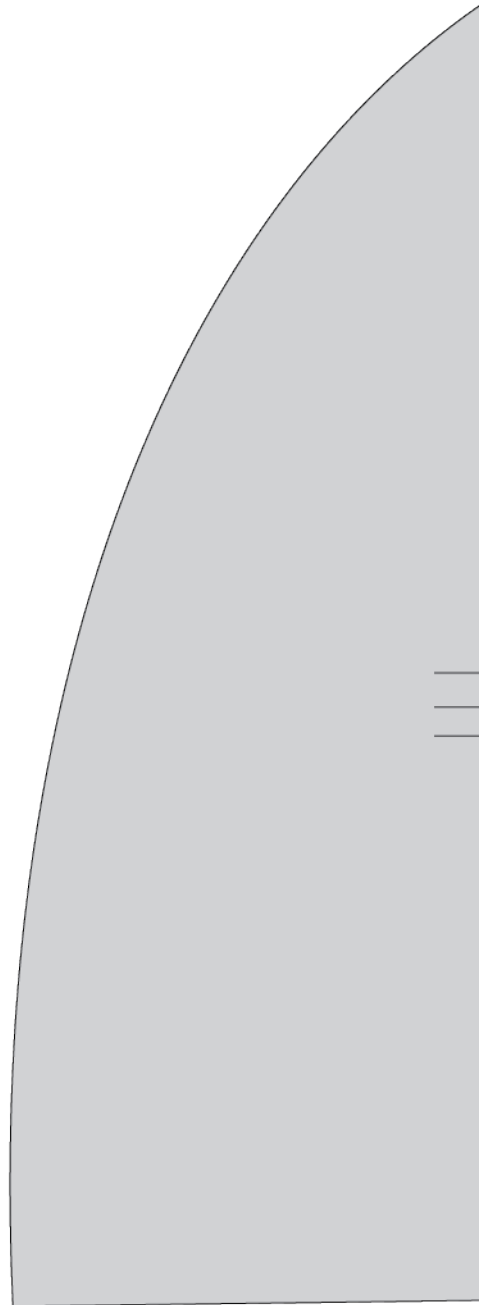
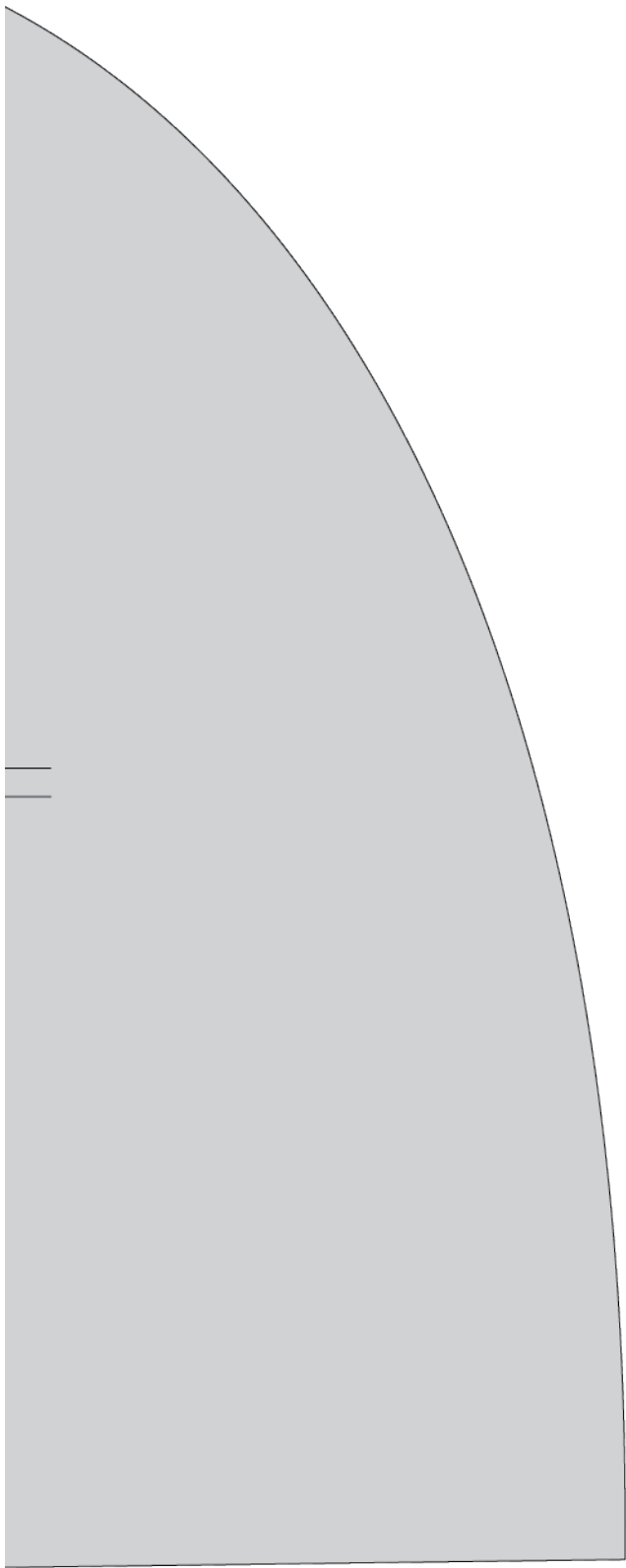


# Template S2

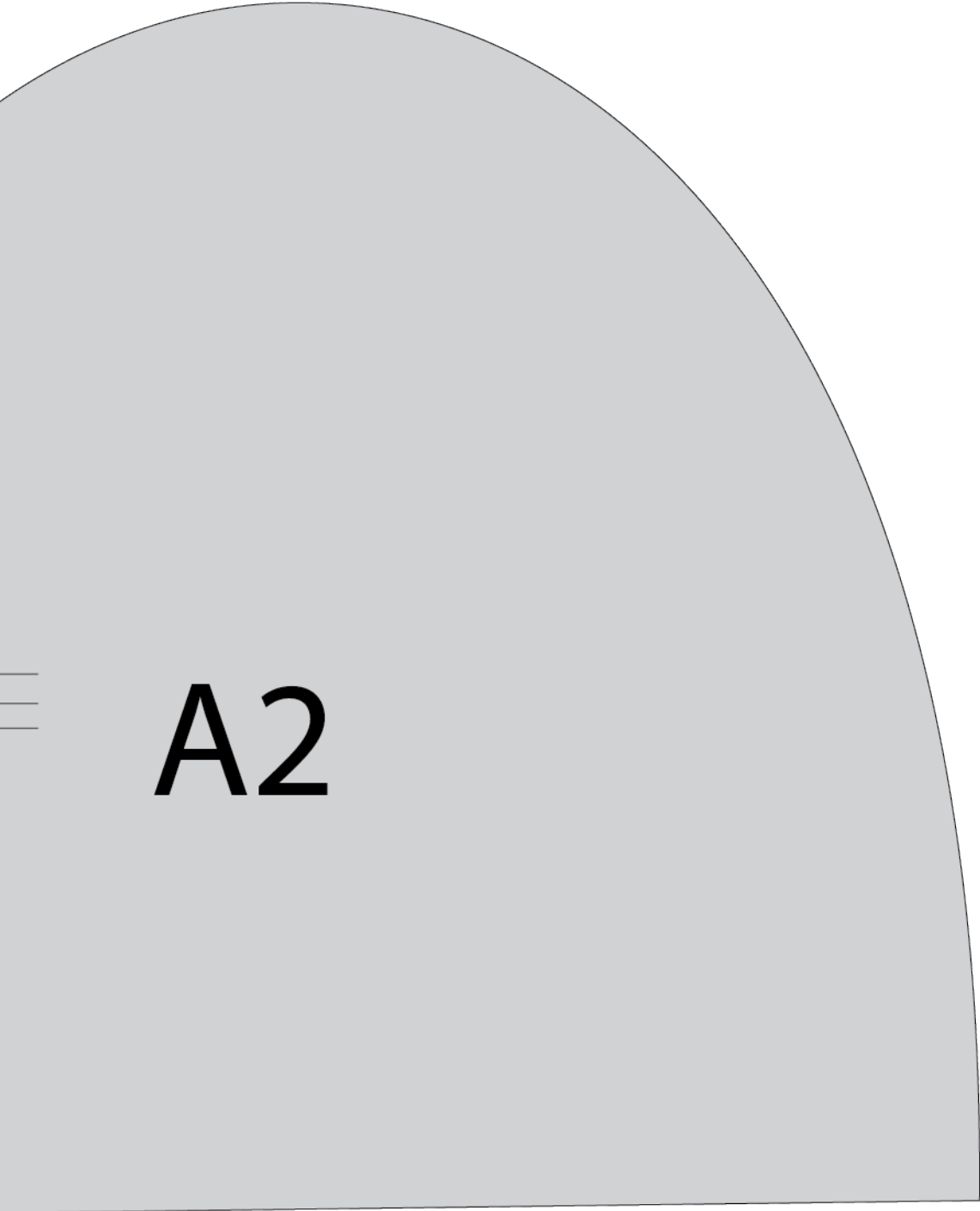


**A1**





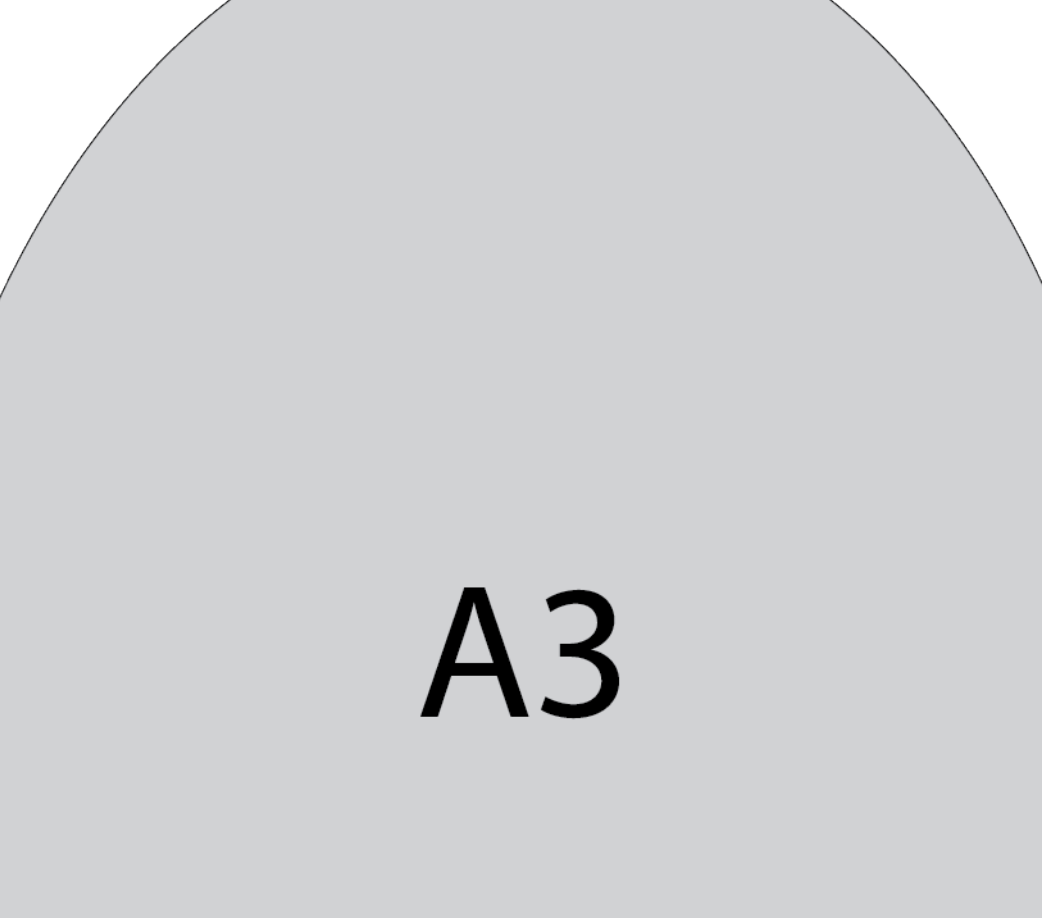


A large gray semi-circle occupies the right half of the image. Inside the semi-circle, the label 'A2' is written in a large, bold, black serif font. To the left of the semi-circle, there are three horizontal black lines of varying lengths, stacked vertically, representing a list or a set of items.

# A2



—

A light gray semi-circle with a thin black outline. The label 'A3' is centered within the semi-circle in a large, bold, black font.



# A4