

XXXXXX

A vibrant, bohemian-style bed setup. The bed is covered with a white duvet and a colorful striped and geometric patterned blanket. Several pillows are arranged on the bed, including a red one, a blue one, and a striped one. A woven tray with a teapot and two cups sits on the bed. A large red vase is visible on the left.

XXXXXXXXXXXXXXXXXXXXXXXXXXXX

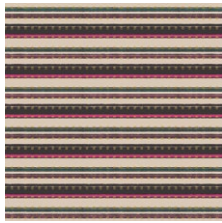




DESIGNED BY *AGFstudio*



FABRICS DESIGNED BY PAT BRAVO



NUC-21984
THE RIGHT PATH

ADDITIONAL BLENDERS FOR THIS PROJECT



FE-513
HONEY MUSTARD



FE-463
ZAMBIA STONE



FE-425
MAUVELOUS



FE-439
RASPBERRY ROSE





Fabric A	NUC-21984	1 $\frac{3}{4}$ yds.
Fabric B	FE-513	$\frac{3}{8}$ yd.
Fabric C	PE-463	F8.
Fabric D	PE-425	$\frac{1}{2}$ yd.
Fabric E	PE-483	F8.

NUC-21984 - 2yds. (*suggested*)

PE-483 (Fabric **D**) (*included*)

*1/4" seam allowances are included.
WOF means width of fabric.*

- Two (2) 30½" squares from fabric **A**.
- Twelve (12) 5½" squares from fabric **B**.
- Two (2) 10½" x 5½" rectangles from fabric **C**.
- Two (2) 10½" x 5½" rectangles from fabric **D**.
- Two (2) 10½" x 5½" rectangles from fabric **E**.

*Sew all rights sides together with ¼" seam allowance.
HST means Half Square Triangles.*

Flying Geese Construction:

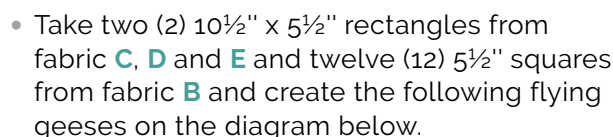
- Take one (1) $10\frac{1}{2}$ " x $5\frac{1}{2}$ " rectangle and two (2) $4\frac{1}{2}$ " squares.
- Place one (1) $5\frac{1}{2}$ " square on top of the $10\frac{1}{2}$ " x $5\frac{1}{2}$ " rectangle.
- Align it to the left side of the rectangle, right sides facing together and draw a diagonal line on top of the square following the diagram below.



- Stitch on the drawn line.
- Trim excess fabric leaving ¼" seam allowance and press open.



- Take one (1) 5½" square and align it on the right side of the fabric 10½" x 5½" rectangle, right sides facing together.
- Draw a diagonal line on top of the square.
- Stitch on the drawn line.
- Trim excess fabric leaving ¼" seam allowance and press open.



- Join the Flying Geeses in the following order:



- Now, take two (2) 30½" squares from fabric **A** (stripes facing vertical) and pair one (1) on each side of the flying geese unit.



DIAGRAM 5

QUILT ASSEMBLY

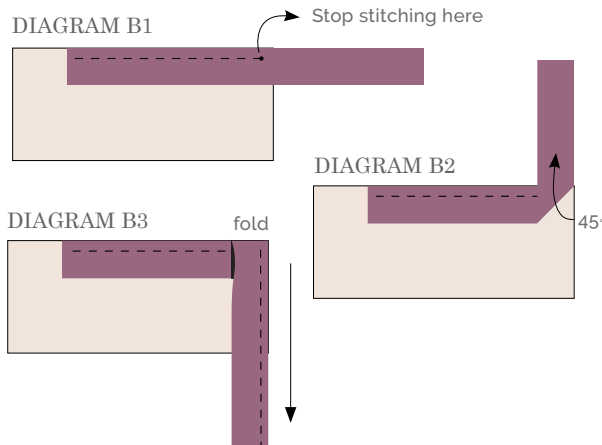
Sew rights sides together.

- Place BACKING FABRIC on a large surface wrong side up. Stretch it with masking tape against that surface.
- Place BATTING on top of backing fabric.
- Place TOP on top of the batting with right side facing up. Smooth away wrinkles using your hands.
- Pin all layers together and baste with basting thread, using long stitches. You can also use safety pins to join the layers.
- Machine or hand quilt starting at the center and working towards the corners. Remember that quilting motifs are a matter of personal preference. Have fun choosing yours!
- After you finished, trim excess of any fabric or batting, squaring the quilt to proceed to bind it.

BINDING

Sew rights sides together.

- Cut enough strips 1½" wide by the width of the fabric **D** to make a final strip 214" long. Start sewing the binding strip in the middle of one of the sides of the seam, placing the strip right side down. Sew with ¼" seam allowance (using straight stitch), aligning the strip's raw edge with the tote seam's raw edge.
- Stop stitching ¼" before the edge of the tote (DIAGRAM B 1). Clip the threads. Remove the tote from under the machine presser foot. Fold the strip in a motion of 45° and upward, pressing with your fingers (DIAGRAM B2). Hold this fold with your finger, bring the strip down in line with the next edge, making a horizontal fold that aligns with the top edge of the tote (DIAGRAM B3). Start sewing at ¼" of the border, stitching all the layers. Do the same all the corners.
- Stop stitching before you reach the last 5 or 6 inches. Cut the threads and remove the tote from under the machine presser foot. Lay the loose ends of the binding flat along the tote edge, folding the ends back on themselves where they meet. Press them together to form a crease. Using this crease as the stitching line, sew the two open ends of the binding with right sides together (you can help yourself marking with a pencil if the crease is difficult to see).
- Trim seam to ¼" and press open. Complete the sewing. Turn binding to back of the tote, turn raw edge inside and stitch by hand using blind stitch.



XX



Please read instructions carefully before starting the construction of this quilt. If desired, wash and iron your fabrics before starting to cut.