

X
X
X
X
X
X
X
X
X
X
X
X
X
X
X
X
X
X

Patchwork

Floor Pillow



FREE PATTERN

XXXXXXXXXXXXXXXXXXXXXXXXXXXX



Patchwork

Floor Pillow

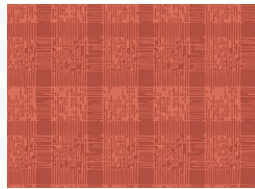
DESIGNED BY AGFstudio

Gloria

FABRICS DESIGNED BY MAUREEN CRACKNELL



GLR-44301
SPRINKLED FLORETS



GLR-44305
TIMEWORN CLOTH



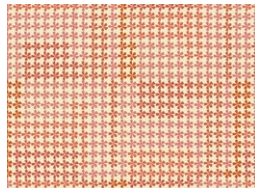
GLR-44306
NOSTALGIA MEADOW MOSS



GLR-44307
GLEAMING SUN COPPER



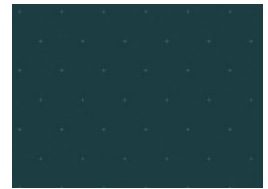
GLR-44308
SHIMMERING CURTAINS



GLR-44309
PATCHWORK REVIVAL



GLR-44310
OLDEN BOUQUETS



GLR-44311
HANDSTITCHED TEAL



GLR-44314
NOSTALGIA MEADOW RUST



GLR-44315
FLOWER DANCE



Patchwork

Floor Pillow

FINISHED SIZE | 28" x 28"

FABRIC REQUIREMENTS

Fabric A	GLR-44310	Fat eight.
Fabric B	GLR-44301	Fat eight.
Fabric C	GLR-44304	Fat eight.
Fabric D	GLR-44306	Fat eight.
Fabric E	GLR-44307	Fat eight.
Fabric F	GLR-44308	Fat eight.
Fabric G	GLR-44309	Fat eight.
Fabric H	GLR-44314	Fat eight.
Fabric E	GLR-44315	Fat eight.
Fabric J	GLR-44311	1 $\frac{3}{8}$ yd.

CUTTING DIRECTIONS

*$\frac{1}{4}$ " seam allowances are included.
WOF means width of fabric.*

- Four (4) 7 $\frac{1}{2}$ " x 2 $\frac{1}{2}$ " strips from fabric **A**.
- Four (4) 11 $\frac{1}{2}$ " x 2 $\frac{1}{2}$ " strips from fabric **B**.
- Four (4) 5 $\frac{1}{2}$ " x 2 $\frac{1}{2}$ " squares from fabric **C**.
- Four (4) 8 $\frac{1}{2}$ " x 2 $\frac{1}{2}$ " squares from fabric **D**.
- Four (4) 2 $\frac{1}{2}$ " squares from fabric **E**.
- Four (4) 2 $\frac{1}{2}$ " squares from fabric **F**.
- Four (4) 10 $\frac{1}{2}$ " x 2 $\frac{1}{2}$ " strips from fabric **G**.
- Four (4) 13 $\frac{1}{2}$ " x 2 $\frac{1}{2}$ " strips from fabric **H**.
- Four (4) 4 $\frac{1}{2}$ " x 2 $\frac{1}{2}$ " strips from fabric **I**.

- Four (4) 14 $\frac{1}{2}$ " x 1 $\frac{1}{2}$ " strips from fabric **J**.
- Four (4) 13 $\frac{1}{2}$ " x 1 $\frac{1}{2}$ " strips from fabric **J**.
- Four (4) 11 $\frac{1}{2}$ " x 1 $\frac{1}{2}$ " strips from fabric **J**.
- Four (4) 10 $\frac{1}{2}$ " x 1 $\frac{1}{2}$ " strips from fabric **J**.
- Four (4) 8 $\frac{1}{2}$ " x 1 $\frac{1}{2}$ " strips from fabric **J**.
- Four (4) 7 $\frac{1}{2}$ " x 1 $\frac{1}{2}$ " strips from fabric **J**.
- Four (4) 5 $\frac{1}{2}$ " x 1 $\frac{1}{2}$ " strips from fabric **J**.
- Four (4) 4 $\frac{1}{2}$ " x 1 $\frac{1}{2}$ " strips from fabric **J**.
- Three (3) 2 $\frac{1}{2}$ " x WOF strips from fabric **J**.
- One (1) 28 $\frac{1}{2}$ " x 28 $\frac{1}{2}$ " square from fabric **J**.

CONSTRUCTION

Sew all rights sides together with $\frac{1}{4}$ " seam allowance.

- For the construction of this pillow you'll need to make four (4) log cabin blocks.
- Start bringing one (1) 2 $\frac{1}{2}$ " square from fabric **E & F**.
- Attach them together as shown in the diagram below.
- Press.

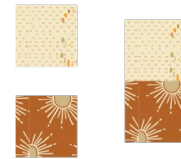


DIAGRAM 1

- Now, take one (1) 4 $\frac{1}{2}$ " x 2 $\frac{1}{2}$ " strips from fabric **I** and attach it to the right side of the previous made piece as shown in the diagram below.
- Attach them together as shown in the diagram below.
- Press.



DIAGRAM 2

- Take one (1) $4\frac{1}{2}$ " x $1\frac{1}{2}$ " strip from fabric **J** and attach it to the left side of the previous made piece as shown in the diagram below.

• Press.



DIAGRAM 3

- Take one (1) $5\frac{1}{2}$ " x $1\frac{1}{2}$ " strip from fabric **J** and attach it to the top side of the previous made piece as shown in the diagram below.

• Press.



DIAGRAM 4

- Take one (1) $5\frac{1}{2}$ " x $2\frac{1}{2}$ " strips from fabric **C** and attach it to the bottom side of the previous made piece as shown in the diagram below.

• Press.

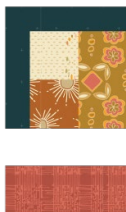


DIAGRAM 5

- Take one (1) $7\frac{1}{2}$ " x $2\frac{1}{2}$ " strips from fabric **A** and attach it to the right side of the previous made piece as shown in the diagram below.

• Press.



DIAGRAM 6

- Take one (1) $7\frac{1}{2}$ " x $1\frac{1}{2}$ " strips from fabric **J** and attach it to the left side of the previous made piece as shown in the diagram below.

• Press.



DIAGRAM 7

- Take one (1) $8\frac{1}{2}$ " x $1\frac{1}{2}$ " strips from fabric **J** and attach it to the bottom side of the previous made piece as shown in the diagram below.

• Press.

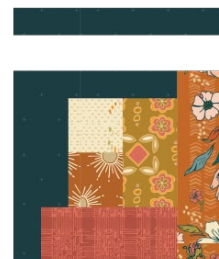


DIAGRAM 8

- Take one (1) $8\frac{1}{2}$ " x $2\frac{1}{2}$ " strips from fabric **D** and attach it to the bottom side of the previous made piece as shown in the diagram below.

• Press.



DIAGRAM 9

- Take one (1) $10\frac{1}{2}'' \times 2\frac{1}{2}''$ strips from fabric **G** and attach it to the right side of the previous made piece as shown in the diagram below.
- Press.



DIAGRAM 10

- Take one (1) $10\frac{1}{2}'' \times 2\frac{1}{2}''$ strips from fabric **J** and attach it to the left side of the previous made piece as shown in the diagram below.
- Press.



DIAGRAM 11

- Take one (1) $11\frac{1}{2}'' \times 1\frac{1}{2}''$ strips from fabric **J** and attach it to the top side of the previous made piece as shown in the diagram below.
- Press.

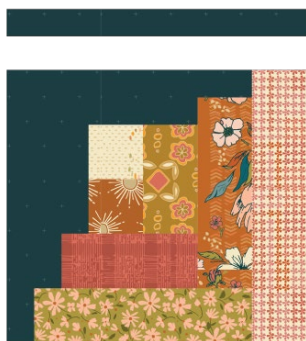


DIAGRAM 12

- Take one (1) $11\frac{1}{2}'' \times 2\frac{1}{2}''$ strips from fabric **B** and attach it to the bottom side of the previous made piece as shown in the diagram below.
- Press.

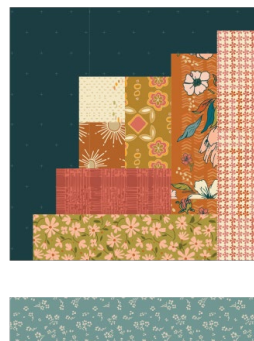


DIAGRAM 13

- Take one (1) $13\frac{1}{2}'' \times 2\frac{1}{2}''$ strips from fabric **H** and attach it to the right side of the previous made piece as shown in the diagram below.
- Press.

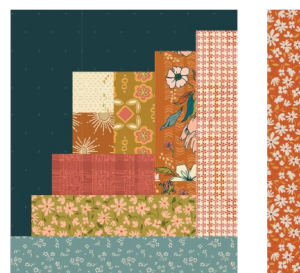


DIAGRAM 14

- Take one (1) $13\frac{1}{2}'' \times 2\frac{1}{2}''$ strips from fabric **H** and attach it to the right side of the previous made piece as shown in the diagram below.
- Press.

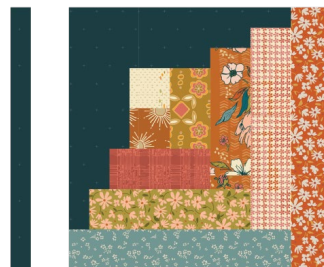
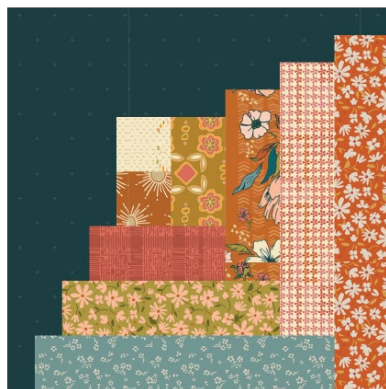
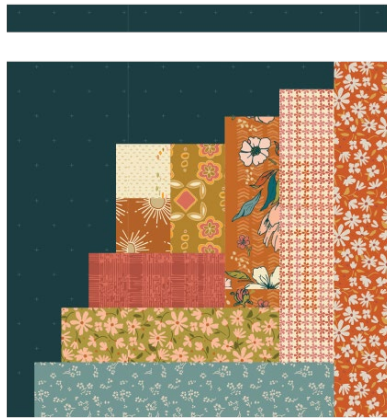


DIAGRAM 15

- Repeat the previous steps to construct a total of four (4) log cabin



x4

DIAGRAM 16

- Attach two blocks together as shown in the diagram below and create two rows like that.



x2

DIAGRAM 17

- Attach the rows together as shown in the diagram below.
- Press..



DIAGRAM 18

QUILT ASSEMBLY

Sew rights sides together.

- Place BACKING FABRIC on a large surface wrong side up. Stretch it with masking tape against that surface.
- Place BATTING on top of backing fabric.
- Place TOP on top of the batting with right side facing up. Smooth away wrinkles using your hands.
- Pin all layers together and baste with basting thread, using long stitches. You can also use safety pins to join the layers.
- Machine or hand quilt starting at the center and working towards the corners. Remember that quilting motifs are a matter of personal preference. Have fun choosing yours!

- After you finished, trim excess of any fabric or batting, squaring it.

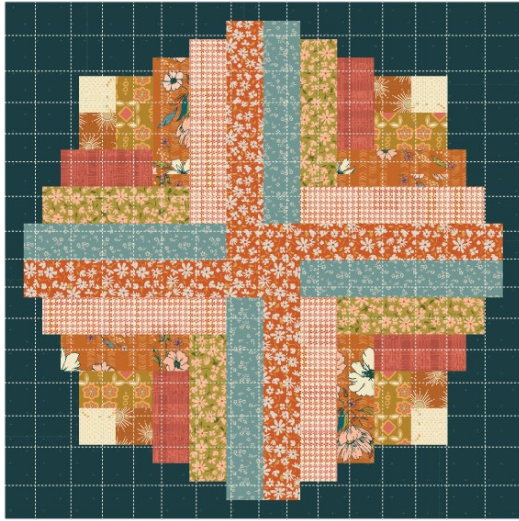


DIAGRAM 19

- Take three (3) 2½" x WOF strips and sew them together on the short edge.
- You should end up with a 125" strip, subcut it so it ends up measuring 119"
- Add batting and quilt the strip if desired.



DIAGRAM 20

- Take the 28½" square from fabric J and start sewing the 112" x 2½" strip all around it.
- Trim the excess fabric and sew the two matching ends of the strip.

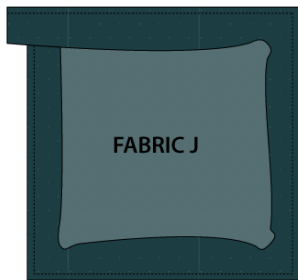


DIAGRAM 21

- Place the main block on the other side of the 112" x 2½" strip, facing right sides together and sew the same way you sew the strip to the 28½" square from fabric J leave an opening that measures around 3" to 4".

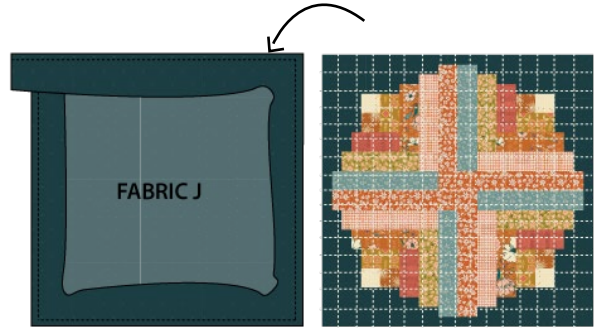


DIAGRAM 22

- Turn the pillow right side out.
- Using pillow stuffing fill up the pillow and close the opening by hand.
- Enjoy.

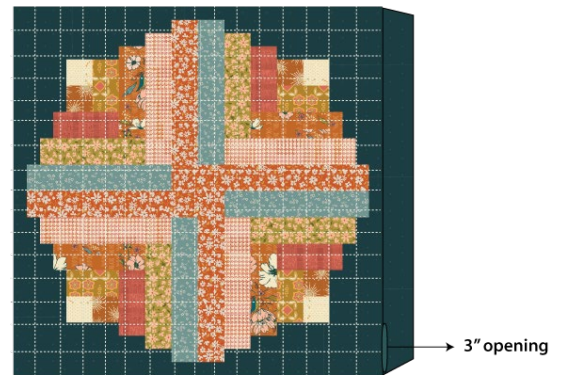


DIAGRAM 23

XXXXXXXXXXXXXXXXXXXXXXXXXXXX

Congratulations
& enjoy

XXXXXXXXXXXXXXXXXXXXXXXXXXXX



artgalleryfabrics.com

NOTE: While all possible care has been taken to ensure the accuracy of this pattern, We are not responsible for printing errors or the way in which individual work varies.

Please read instructions carefully before starting the construction of this quilt. If desired, wash and iron your fabrics before starting to cut.

© 2021 Courtesy of Art Gallery Quilts LLC. All Rights Reserved.