







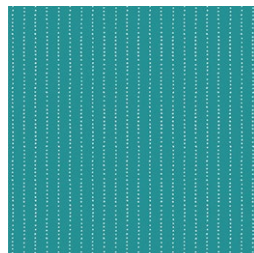
QUILT DESIGNED BY *AGFstudio*



FABRICS DESIGNED BY ALEXANDRA BORDALLO



PTC-59700  
OPENING ACT



PTC-59701  
GRANDSTAND



PTC-59702  
CAROUSEL JOY



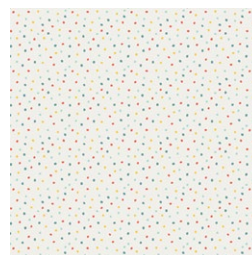
PTC-59704  
REARING HORSES SHINE



PTC-59705  
ADMIT ONE



PTC-59707  
CIRCUS IS IN TOWN



PTC-59710  
SHOW TIME



PTC-59711  
MUSICAL PARADE



ADDITIONAL BLENDERS FOR THIS PROJECT



PE-402  
COZUMEL BLUE



PE-424  
MIRAGE BLUE



PE-435  
BANANA CREAM



PE-438  
RASPBERRY ROSE



PE-442  
OCEAN WAVES



PE-457  
DRIED CARROT



FINISHED SIZE | 60" x 69"

## FABRIC REQUIREMENTS

Fabric <b>A</b>	PTC-59700	½ yd.
Fabric <b>B</b>	PTC-59701	¾ yd.
Fabric <b>C</b>	PTC-59702	½ yd.
Fabric <b>D</b>	PTC-59704	⅝ yd.
Fabric <b>E</b>	PTC-59705	¾ yd.
Fabric <b>F</b>	PTC-59707	¾ yd.
Fabric <b>G</b>	PTC-59710	3¾ yd.
Fabric <b>H</b>	PTC-59711	⅝ yd.
Fabric <b>I</b>	PE-402	¾ yd.
Fabric <b>J</b>	PE-424	¾ yd.
Fabric <b>K</b>	PE-435	¾ yd.
Fabric <b>L</b>	PE-442	¾ yd.
Fabric <b>M</b>	PE-457	¾ yd.
Fabric <b>N</b>	PE-438	¾ yd.

### BACKING FABRIC

PTC-59703 4 yds (*Suggested*)

### BINDING FABRIC

Fabric **N** PE-438 (*Included*)

## CUTTING DIRECTIONS

¼" seam allowances are included.

WOF means width of fabric.

- Twelve (12) rhombus templates from fabric **A**.
- Six (6) rhombus templates from fabric **B**.
- Twelve (12) rhombus templates from fabric **C**.
- Seventeen (17) rhombus templates from fabric **D**.
- Six (6) rhombus templates from fabric **E**.
- Six (6) rhombus templates from fabric **F**.
- One hundred seventeen (117) rhombus templates from fabric **G**.
- Seventeen (17) rhombus templates from fabric **H**.
- Five (5) rhombus templates from fabric **I**.
- Four (4) rhombus templates from fabric **J**.
- Four (4) rhombus templates from fabric **K**.
- Three (3) rhombus templates from fabric **L**.
- Four (4) rhombus templates from fabric **M**.

## CONSTRUCTION

Sew all rights sides together with ¼" seam allowance.

- There are nineteen (19) different columns with different rhombus combinations needed for the construction of this quilt top.
- Start with the columns construction using the corresponding rhombus for each column.
- Follow the diagrams for column combinations.

Column # 1:

- **G-H-G**



DIAGRAM 1

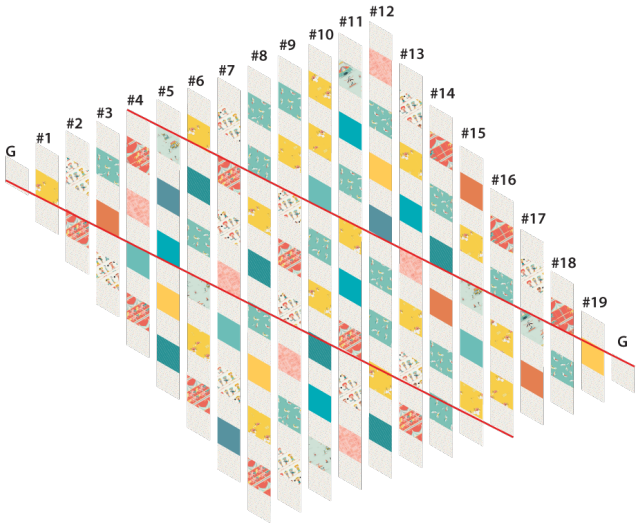




# QUILT TOP

*Sew all rights sides together with 1/4"seam allowance.*

- Attach the columns together from 1-19, following the diagram below, make sure that the rhombus are aligned refering to the red lines on the diagram.
- Use the two (2) remaining fabric **G** template rhombus for the ends.



- Trim to 60" x 69"



# QUILT ASSEMBLY

*Sew rights sides together.*

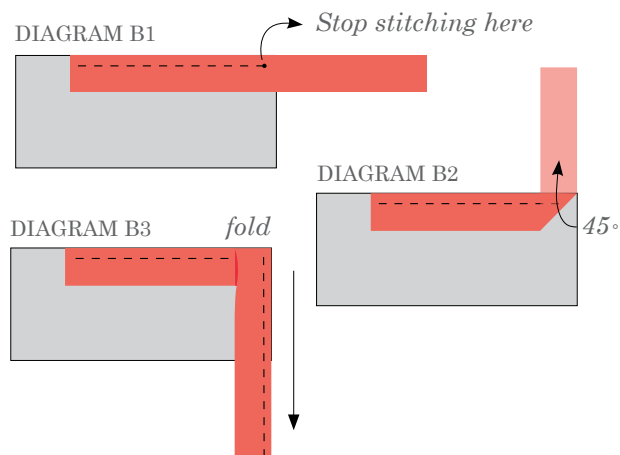
- Place BACKING FABRIC on a large surface wrong side up. Stretch it with masking tape against that surface.
- Place BATTING on top of backing fabric.
- Place TOP on top of the batting with right side facing up. Smooth away wrinkles using your hands.
- Pin all layers together and baste with basting thread, using long stitches. You can also use safety pins to join the layers.
- Machine or hand quilt starting at the center and working towards the corners. Remember that quilting motifs are a matter of personal preference. Have fun choosing yours!
- After you finished, trim excess of any fabric or batting, squaring the quilt to proceed to bind it.

# BINDING

*Sew rights sides together.*

- Cut enough strips 1 1/2" wide by the width of the fabric **N** to make a final strip 268" long. Start sewing the binding strip in the middle of one of the sides of the quilt, placing the strip right side down and leaving an approximated 5" tail. Sew with 1/4" seam allowance (using straight stitch), aligning the strip's raw edge with the quilt top's raw edge.
- Stop stitching 1/4" before the edge of the quilt (DIAGRAM B 1). Clip the threads. Remove the quilt from under the machine presser foot. Fold the strip in a motion of 45° and upward, pressing with your fingers (DIAGRAM B2). Hold this fold with your finger, bring the strip down in line with the next edge, making a horizontal fold that aligns with the top edge of the quilt (DIAGRAM B3). Start sewing at 1/4" of the border, stitching all the layers. Do the same in the four corners of the quilt.

- Stop stitching before you reach the last 5 or 6 inches. Cut the threads and remove the quilt from under the machine presser foot. Lay the loose ends of the binding flat along the quilt edge, folding the ends back on themselves where they meet. Press them together to form a crease. Using this crease as the stitching line, sew the two open ends of the binding with right sides together (you can help yourself marking with a pencil if the crease is difficult to see).
- Trim seam to  $\frac{1}{4}$ " and press open. Complete the sewing. Turn binding to back of the quilt, turn raw edge inside and stitch by hand using blind stitch.



XXXXXXXXXXXXXXXXXXXXXXXXXXXXXXXXXXXX

*Congratulations  
& enjoy*

XXXXXXXXXXXXXXXXXXXXXXXXXXXXXXXXXXXX



[artgalleryfabrics.com](http://artgalleryfabrics.com)

NOTE: While all possible care has been taken to ensure the accuracy of this pattern, We are not responsible for printing errors or the way in which individual work varies.

Please read instructions carefully before starting the construction of this quilt. If desired, wash and iron your fabrics before starting to cut.



TEMPLATE

1" TEST SQUARE

