

Midnight Flowers

LUNCH BAG



FREE PATTERN

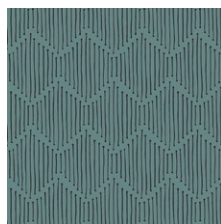
XXXXXXXXXXXXXXXXXXXXXXXXXXXX



Midnight Flowers

LUNCH BAG

DESIGNED BY AGF STUDIO



LUL-28507
MINDFUL PATHS



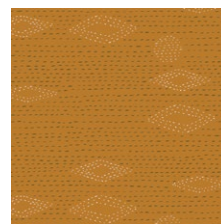
PE-463
ZAMBIA STONE



KSM-73305
INDIA INK PARCHMENT



DSE-715
CAFE LATTE



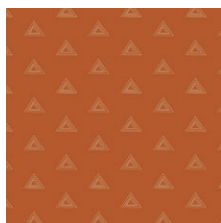
KSM-73301
KANTHA MICA



LGD-39711
FLECKS DREAMS



CAP-SV-11604
BRUSHED FIBERS



PRE-815
DUSK ZIRCON



LUL-28500
TINTED BLOOMS



FINISHED SIZE | 15½" x 13"

FABRIC REQUIREMENTS

Fabric A	LUL-28507	¼ yd.
Fabric B	PE-463	⅝ yd.
Fabric C	KSM-73305	F8.
Fabric D	DSE-715	F8.
Fabric E	KSM-73301	F8.
Fabric F	LGD-39711	⅝ yd.
Fabric G	CAP-SV-11604	F8.
Fabric H	PRE-815	F8.
Fabric I	LUL-28500	F8.

LINING FABRIC

Fabric **B** PE-463 *(Included)*

Additional Material:

- Snap Fastener

CUTTING DIRECTIONS

Fabric **A**

- Cut four (4) 4½" x 2½" rectangles.
- Cut four (4) 2½" squares.
- Two (2) 14" x 1½" strips.
- One (1) 12½" x 2" strips.

Fabric **B**

- Cut four (4) 2⅞" squares.
- Two (2) 14½" x 19" rectangles.
- One (1) 10" x 4" strip.

Fabric **C**

- Cut one (1) 5¼" square.

Fabric **D**

- Cut one (1) 4" squares.

Fabric **E**

- Cut one (1) 4" squares.

Fabric **F**

- Cut eight (8) template 2.
- One (1) 14½" x 5½" rectangle
- One (1) 14½" x 19" rectangle (back of lunch bag)

Fabric **G**

- Cut four (4) template 1.

Fabric **H**

- Cut four (4) template 1.

Fabric **I**

- Cut one (1) 4½" square.

CONSTRUCTION

Four at a time HST:

- Start by placing one 4" square from fabric **D** and **E** right sides together.
- Sew at ¼" around the square.
- Mark a diagonal line across on the wrong side of the fabric square.
- Using your rotary blade, cut the square in quarters following the drawn diagonal lines.
- Press each HST and trim to a 2½" square.

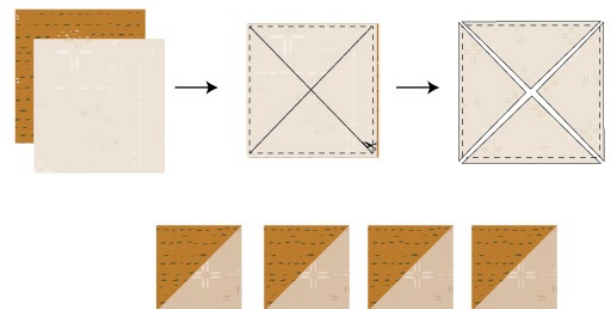


DIAGRAM 1

Four at a time flying geese:

- Start by placing two (2) $2\frac{7}{8}$ " squares from fabric **B** one on each opposite corner of a $5\frac{1}{4}$ " square from fabric **C**. The corners will be overlapping.
- Draw a line diagonally and stitch $\frac{1}{4}$ " on each side of the line. Cut through the line.
- Now place another $2\frac{7}{8}$ " square from fabric **B** and place it on the right bottom corner.
- Draw a diagonal line $\frac{1}{4}$ " on each side of the line.
- Cut through the line, press open, repeat the same step with the other piece.

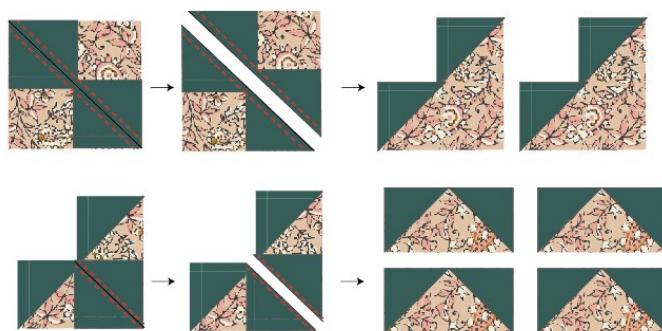


DIAGRAM 2

- Take one (1) template 1 from fabrics **G** and **H** and two (2) template 2 from fabric **F** and join them following the diagram below.
- Repeat the same construction three (3) more times in order to have four (4) pieces.

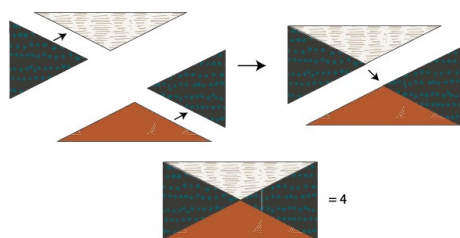


DIAGRAM 3

- To trim your pieces, take the trimming template 2 and align it with the seam allowance in order to trim each piece to $4\frac{1}{2}$ " x $2\frac{1}{2}$ ".

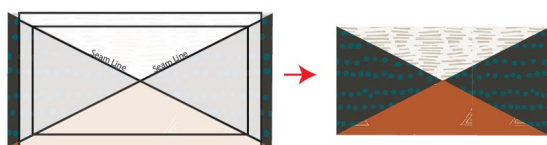


DIAGRAM 4

- Join each piece following the diagram below.

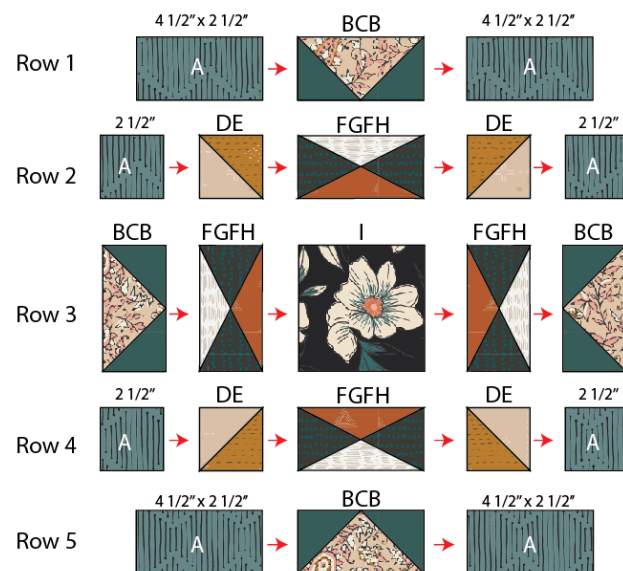


DIAGRAM 5

- Join rows 1-5.

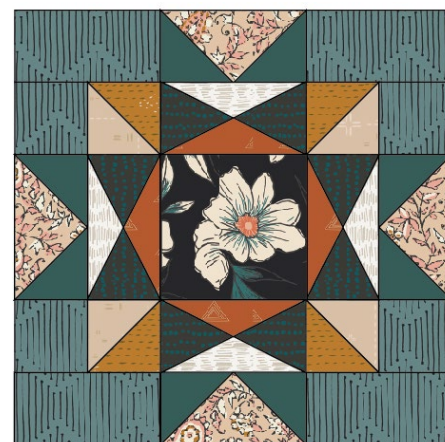
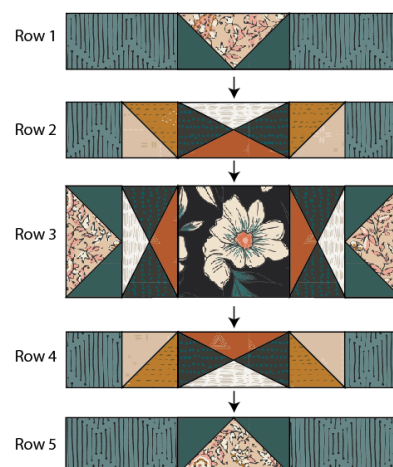


DIAGRAM 6

- Now, insert your main lunch bag inside the lining, right sides facing.
- Sew the top part.
- Pull the main fabric through the opening side from the lining.
- Press and steam.

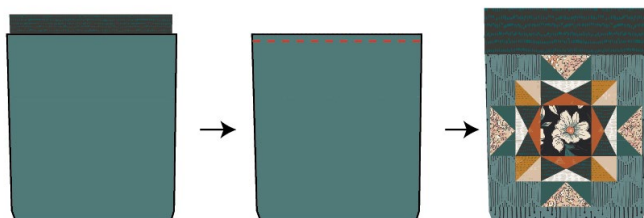


DIAGRAM 12

- Take one (1) 10" x 2" strip from fabric **B** and fold the edges to the center and then fold in half.
- Sew the edges with matching thread.

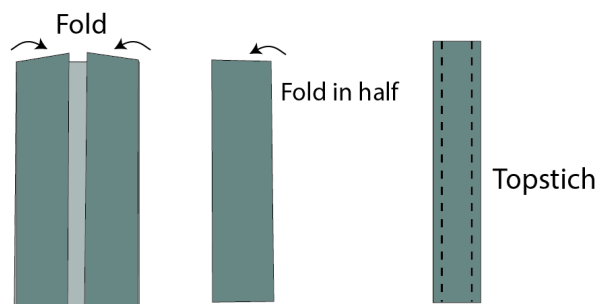


DIAGRAM 13

- Place the strip 8" down measuring from the top.
- Top stitch to secure the strap.

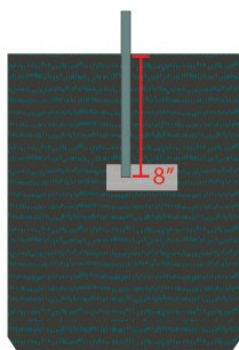


DIAGRAM 14

- Roll the top of the lunch bag down, and calculate where you want the snap fastener to be placed.
- Follow the instructions of your purchased snap fastener package to place the snap on the lunch bag and strip.
- Now, enjoy your lunch bag!.



XXXXXXXXXXXXXXXXXXXXXXXXXXXXXXXXXXXX

*Congratulations
& enjoy*

XXXXXXXXXXXXXXXXXXXXXXXXXXXXXXXXXXXX



artgalleryfabrics.com

NOTE: While all possible care has been taken to ensure the accuracy of this pattern, We are not responsible for printing errors or the way in which individual work varies.

Please read instructions carefully before starting the construction of this quilt. If desired, wash and iron your fabrics before starting to cut.

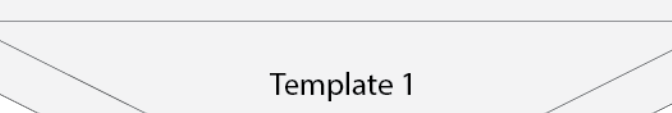



Diagram illustrating the concept of a template. A large light gray triangle is labeled "Template 1". Inside it, a smaller, darker gray triangle is shown, representing a specific instance or a nested structure derived from the template.

Template 1

Template 2

Seam Line