

X
X
X
X
X
X
X
X
X
X
X
X
X
X

Grimera



XXXXXXXXXXXXXXXXXXXX

GhimerA

DESIGNED BY AGF STUDIO

AGFstudio

sisu!

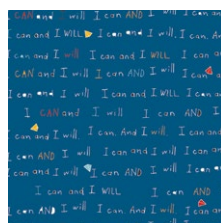
FABRICS DESIGNED
BY AGF STUDIO



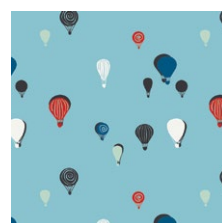
SSU-10053
WILLFUL BUDS CARDINAL



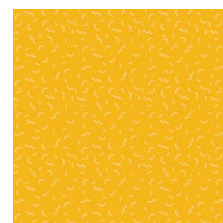
SSU-10056
WHATCHAMACALLITS
OVERFLYING



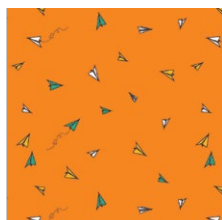
SSU-10057
THE MOTTO HIGHLIGHTED



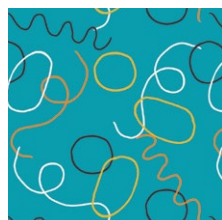
SSU-10058
SPACE BUBBLES FIZZ



SSU-20051
THINGAMAJIGS LAUGHING



SSU-20055
PAPER PLANE DREAMS



SSU-20056
WHATCHAMACALLITS
UNDERWATER



Gwimera

FINISHED SIZE | 18"l x 18"w x 5"h

FABRIC REQUIREMENTS

| | | |
|----------|-----------|--------------------|
| Fabric A | SSU-10053 | $\frac{3}{8}$ yd. |
| Fabric B | SSU-10056 | $1\frac{3}{8}$ yd. |
| Fabric C | SSU-10057 | $\frac{3}{8}$ yd. |
| Fabric D | SSU-10058 | $\frac{1}{4}$ yd. |
| Fabric E | SSU-20051 | $\frac{1}{4}$ yd. |
| Fabric F | SSU-20055 | $\frac{1}{4}$ yd. |
| Fabric G | SSU-20056 | $\frac{1}{4}$ yd. |

CUTTING DIRECTIONS

$\frac{1}{4}$ " seam allowances are included.
WOF means width of fabric.

- Two (2) $20\frac{1}{2}$ " x 4" strips from fabric A & C.
- One (1) $20\frac{1}{2}$ " square from fabric B.
- Two (2) $20\frac{1}{2}$ " x $14\frac{1}{2}$ " strips from fabric B.
- Three (3) $5\frac{1}{2}$ " x WOF strips from Fabric B.
- One (1) $20\frac{1}{2}$ " x $3\frac{1}{2}$ " strip from Fabric D-G.

CONSTRUCTION

Sew all rights sides together with $\frac{1}{4}$ " seam allowance.

- Take one (1) strip from fabrics A C E and F.
- Attach the strips on the order CEFA.
- Set aside



DIAGRAM 1

- Take one (1) strip from fabrics A C D and G.
- Attach the strips on the order ADGC.



DIAGRAM 2

- Take the template provided and cut two(2) from each set of strips.
- Align the point of the template to the center of the strip set.



DIAGRAM 3

ENVELOPE BACKING

Sew all rights sides together with 1/4" seam allowance. Press open.

- Attach the four (4) pieces together.



DIAGRAM 4

- Place the circle on top of the 20½" square from fabric **B**.
- Use Steam-A-Seam to hold it on place and make a top stitch around the circle edge.



DIAGRAM 2

- Use the 5½" strips from fabric **B** for the borders.

- Take your 21" x36" rectangles from Fabric A and fold in half and press fold..
- Sew a 1/2" top stitch to secure the fold. Place the pieces right sides together overlapping each other on top of your pillow top.
- Stitch around all four sides of your pillow at 1/2".
- Snip your corners at the seam allowance to get rid of extra bulk and flip your pillow right side out!
- Stuff your pillow with a pillow form.
- Voila!

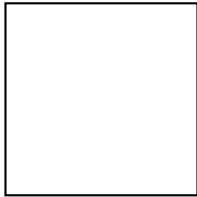


artgalleryfabrics.com

NOTE: While all possible care has been taken to ensure the accuracy of this pattern, We are not responsible for printing errors or the way in which individual work varies. Please read instructions carefully before starting the construction of this quilt. If desired, wash and iron your fabrics before starting to cut.

TEMPLATE

1" TEST SQUARE



x x x x x x x x x x x x x x x x x x x

TEMPLATE

