

Joyous PICNIC



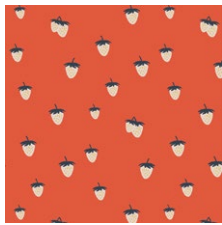
For Summer Side

QUILT DESIGNED BY *AGEstudio*




Summer Side

FABRICS DESIGNED
BY DANA WILLARD



SMS-83201
BACKYARD BERRY
CHERRY



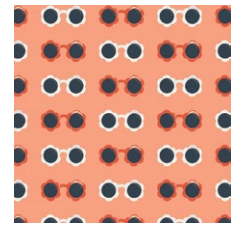
SMS-83208
SWIMSUIT SOIREE
COASTLINE



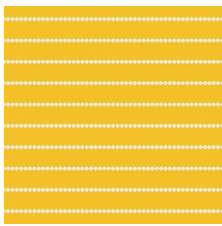
SMS-83202
BREEZY BLOSSOMS
LEMONADE



SMS-83200
BUNGALOW BLOOM
MOONRISE



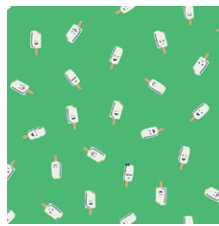
SMS-83206
SUNNY SHADES
MELON



SMS-83207
SEASIDE STRIPES
SUNNY



SMS-83205
SEASIDE STRIPES
SEAGLASS



SMS-83203
POPSICLE PARTY
SPEARMINT



Joyous

PICNIC

For Summer Side

FINISHED SIZE | 60" x 80"

FABRIC REQUIREMENTS

Fabric A	SMS-83201	¾ yd.
Fabric B	SMS-83208	¾ yd.
Fabric C	SMS-83202	¾ yd.
Fabric D	SMS-83200	¾ yd.
Fabric E	PE-454	¾ yd.
Fabric F	SMS-83206	¾ yd.
Fabric G	PE-458	¼ yd.
Fabric H	PE-408	1¼ yd.
Fabric I	SMS-83207	1 ¾ yd.
Fabric J	SMS-83205	¾ yd.
Fabric K	SMS-83203	¾ yd.

BINDING FABRIC

Fabric **A** (Included)

BACKING FABRIC

SMS-83202- 5 ½ yds. (suggested)

CUTTING DIRECTIONS

¼" seam allowances are included.
WOF means width of fabric.

- Seven (7) 10½" x 4½" rectangles from fabric **A**.
- Three (3) 10½" x 2½" rectangles from fabric **A**.
- Six (6) 10½" x 4½" rectangles from fabric **B**.
- Seven (7) 10½" x 4½" rectangles from fabric **C**.
- Seven (7) 10½" x 4½" rectangles from fabric **D**.
- Three (3) 10½" x 2½" rectangles from fabric **D**.
- Five (5) 10½" x 4½" rectangles from fabric **E**.
- Seven (7) 10½" x 4½" rectangles from fabric **F**.
- Three (3) 10½" x 4½" rectangles from fabric **G**.
- Three (3) 10½" x 2½" rectangles from fabric **G**.

- Sixteen (16) 10½" squares from fabric **H**.
- Twelve (12) 10½" squares from fabric **I**.
- Eight (8) 10½" x 4½" rectangles from fabric **I**.
- Six (6) 10½" x 2½" rectangles from fabric **I**.
- Three (3) 10½" x 4½" rectangles from fabric **J**.
- Eight (8) 10½" x 2½" rectangles from fabric **J**.
- Three (3) 10½" x 4½" rectangles from fabric **K**.
- Five (5) 10½" x 2½" rectangles from fabric **K**.

CONSTRUCTION

Sew all rights sides together with ¼" seam allowance.

- Take one (1) 10½" x 4½" rectangle from fabric **A**, one (1) 10½" x 2½" rectangle from fabric **I**, and one (1) 10½" x 4½" rectangle from fabric **B**.
- Pair the three pieces together in the following order: **A-I-B**.
- Set aside
- Repeat the previous process for the following fabric combinations:

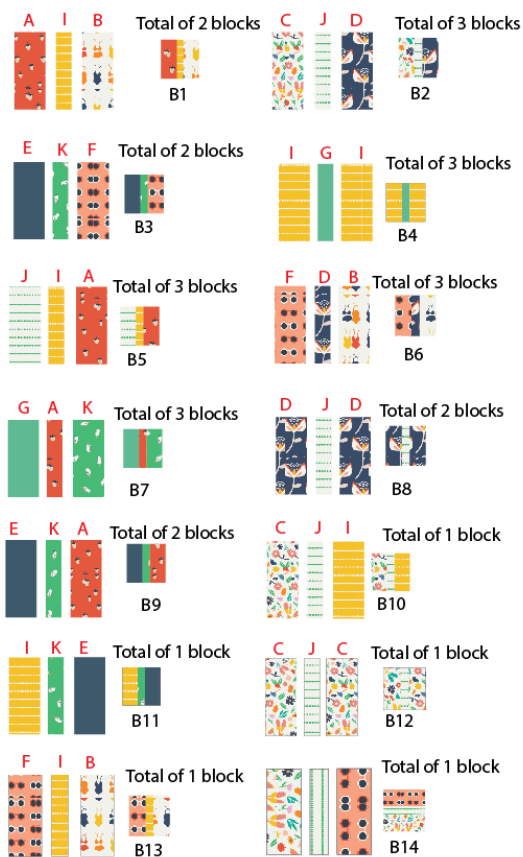


DIAGRAM 1

