

featuring LEGENDARY COLLECTION BY PAT BRAVO

entwine



FREE PATTERN

XXXXXXXXXXXXXXXXXXXXXXXXXXXX



entwine

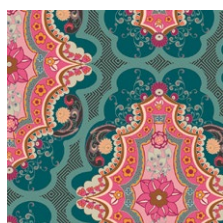
QUILT DESIGNED BY PAT BRAVO

LEGENDARY

FABRICS DESIGNED BY PAT BRAVO



LGD-49702
WONDERLUST BOHO



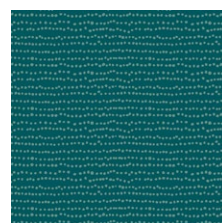
LGD-49703
BRIT BOUTIQUE BOHO



LGD-49704
FEMME METALE BOHO



LGD-49705
MEADOW BOHO



LGD-49710
FLECKS BOHO



LGD-49706
COLLAR ENDS BOHO



LGD-49707
COLLAR ENDS SOUL



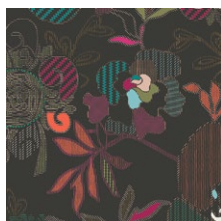
LGD-49708
TRINKETS BOHO



LGD-49709
TRINKETS SOUL



LGD-49711
FLECKS SOUL



LGD-39700
STITCHED ANTHOMANIA BOLD



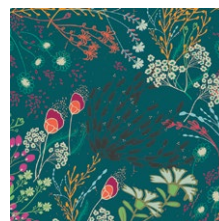
LGD-39701
MARQUETERIE BOLD



LGD-39703
BRIT BOUTIQUE BOLD



LGD-39704
FEMME METALE BOLD



LGD-39705
MEADOW BOLD



LGD-39706
COLLAR ENDS BOLD



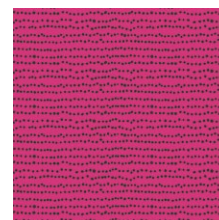
LGD-39707
COLLAR ENDS DREAMS



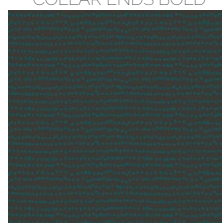
LGD-39708
TRINKETS BOLD



LGD-39709
TRINKETS DREAMS



LGD-39710
FLECKS BOLD



LGD-39711
FLECKS DREAMS





FINISHED SIZE | 64" x 83"

FABRIC REQUIREMENTS

| | | |
|-----------------|-----------|---------|
| Fabric A | LGD-39709 | 7/8 yd. |
| Fabric B | LGD-39705 | 1/2 yd. |
| Fabric C | LGD-49710 | 7/8 yd. |
| Fabric D | LGD-39701 | 1/4 yd. |
| Fabric E | LGD-39711 | 1/2 yd. |
| Fabric F | LGD-39700 | 1/4 yd. |
| Fabric G | LGD-39708 | 1/2 yd. |
| Fabric H | LGD-49706 | 1/4 yd. |
| Fabric I | LGD-49703 | 1/4 yd. |
| Fabric J | LGD-39706 | 3/4 yd. |
| Fabric K | LGD-49709 | 5/8 yd. |
| Fabric L | LGD-39704 | 1/2 yd. |
| Fabric M | LGD-39707 | 1/2 yd. |
| Fabric N | LGD-49707 | 5/8 yd. |
| Fabric O | LGD-49705 | 1/4 yd. |
| Fabric P | LGD-49708 | 1/4 yd. |
| Fabric Q | LGD-39703 | 1/4 yd. |
| Fabric R | LGD-49702 | 1/2 yd. |
| Fabric S | LGD-49704 | 1/2 yd. |
| Fabric T | LGD-49711 | 1/2 yd. |
| Fabric U | LGD-39710 | 1/4 yd. |

BACKING FABRIC

LGD-39700 5 1/2 yds. *(Suggested)*

BINDING FABRIC

LGD-49710 (Fabric **C**) *(included)*

CUTTING DIRECTIONS

1/4" seam allowances are included.
WOF means width of fabric.

- Twenty (20) 6 7/8" squares from fabric **A**.
- Nine (9) 6 7/8" squares from fabric **B**.
- One (1) 6 1/2" square from fabric **B**.
- Ten (10) 6 7/8" squares from fabric **C**.
- Two (2) 6 1/2" squares from fabric **C**.
- Five (5) 6 7/8" squares from fabric **D**.
- One (1) 6 1/2" square from fabric **D**.

- Eight (8) 6 7/8" squares from fabric **E**.
- One (1) 6 1/2" square from fabric **E**.
- Four (4) 6 7/8" squares from fabric **F**.
- Eleven (11) 6 7/8" squares from fabric **G**.
- Four (4) 6 7/8" squares from fabric **H**.
- Two (2) 6 1/2" squares from fabric **H**.
- Three (3) 6 7/8" squares from fabric **I**.
- One (1) 6 1/2" square from fabric **I**.
- Fourteen (14) 6 7/8" squares from fabric **J**.
- Twelve (12) 6 7/8" squares from fabric **K**.
- Two (2) 6 1/2" squares from fabric **K**.
- Nine (9) 6 7/8" squares from fabric **L**.
- Six (6) 6 7/8" squares from fabric **M**.
- Fourteen (14) 6 7/8" squares from fabric **N**.
- Five (5) 6 7/8" squares from fabric **O**.
- One (1) 6 1/2" square from fabric **P**.
- Three (3) 6 7/8" squares from fabric **P**.
- Two (2) 6 7/8" squares from fabric **Q**.
- Two (2) 6 1/2" squares from fabric **R**.
- Six (6) 6 7/8" squares from fabric **R**.
- Eight (8) 6 7/8" squares from fabric **S**.
- Four (4) 6 7/8" squares from fabric **T**.
- Three (3) 6 1/2" squares from fabric **T**.
- Three (3) 6 7/8" squares from fabric **U**.

XX

*Sew all rights sides together with 1/4" seam allowance.
HST means Half Square Triangles.*

HST construction

- Place one (1) 6 $\frac{7}{8}$ " square from fabrics **A** and **C** right sides together.
- Mark a diagonal line on the wrong side of the square.
- Sew $\frac{1}{4}$ " on both side of the drawn line.
- Using a rotary blade cut the square into two triangles.
- Trim each HST to a 6 $\frac{1}{2}$ " square.

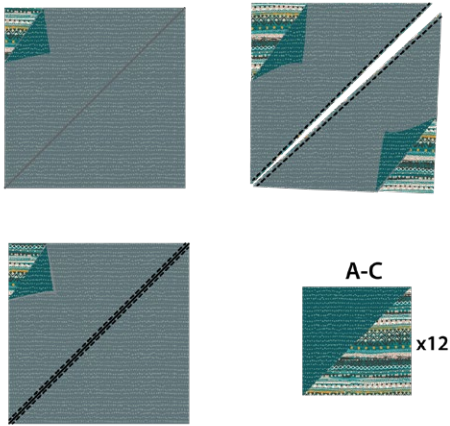


DIAGRAM 1

- Repeat the HST method with two (2) 6 $\frac{7}{8}$ " squares from fabric **B** and **E**.



DIAGRAM 2

- Repeat the HST method with seven (7) 6 $\frac{7}{8}$ " squares from fabric **A** and **B**.



DIAGRAM 3

- Repeat the HST method with one (1) 6⅞" squares from fabric **A** and **O**.

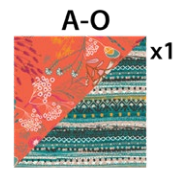


DIAGRAM 4

- Repeat the HST method with one (1) 6 $\frac{7}{8}$ " squares from fabric **E** and **H**.

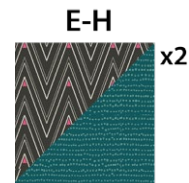


DIAGRAM 5

- Repeat the HST method with three (3) 6 $\frac{7}{8}$ " squares from fabric **J** and **M**.

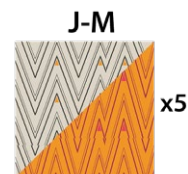


DIAGRAM 6

- Repeat the HST method with four (4) 6⅞" squares from fabric **R** and **S**.



DIAGRAM 7

- Repeat the HST method with one (1) 6 $\frac{7}{8}$ " squares from fabric **O** and **N**.

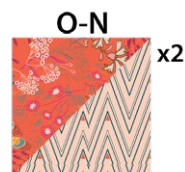


DIAGRAM 8

- Repeat the HST method with four (4) 6 $\frac{7}{8}$ " squares from fabric **C** and **F**.

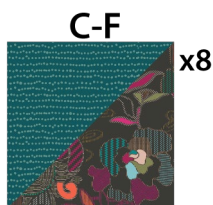


DIAGRAM 9

- Repeat the HST method with nine (9) 6 $\frac{7}{8}$ " squares from fabric **K** and **L**.

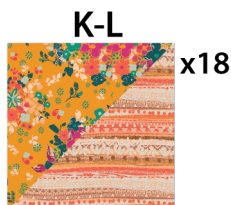


DIAGRAM 10

- Repeat the HST method with two (2) 6 $\frac{7}{8}$ " squares from fabric **K** and **N**.

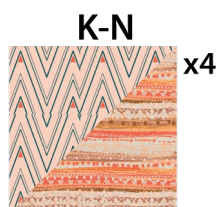


DIAGRAM 11

- Repeat the HST method with two (2) 6 $\frac{7}{8}$ " squares from fabric **R** and **Q**.

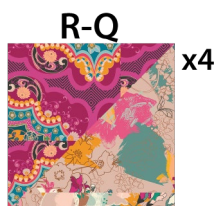


DIAGRAM 12

- Repeat the HST method with one (1) 6 $\frac{7}{8}$ " squares from fabric **O** and **K**.

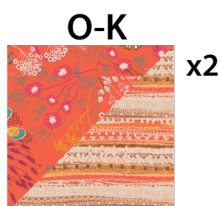


DIAGRAM 13

XX

- Repeat the HST method with five (5) 6⅞" squares from fabric **D** and **E**.



DIAGRAM 14

- Repeat the HST method with three (3) 6 $\frac{7}{8}$ " squares from fabric **G** and **M**.

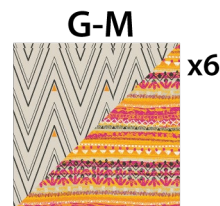


DIAGRAM 15

- Repeat the HST method with seven (7) 6 $\frac{7}{8}$ " squares from fabric **G** and **N**.

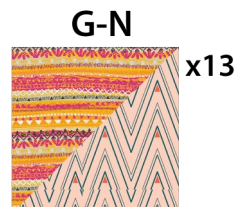


DIAGRAM 16

- Repeat the HST method with four (4) $6\frac{7}{8}$ " squares from fabric **S** and **T**.

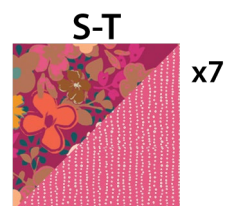


DIAGRAM 17

- Repeat the HST method with one (1) 6 $\frac{7}{8}$ " squares from fabric **O** and **G**.

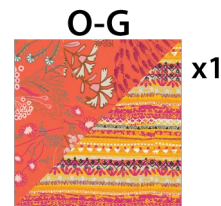


DIAGRAM 18

ASSEMBLING THE TOP

Sew all rights sides together with 1/4" seam allowance. Press open.

- Repeat the HST method with one (1) 6 7/8" squares from fabric **O** and **J**.

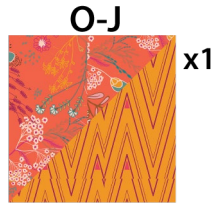


DIAGRAM 19

- Repeat the HST method with six(6) 6 7/8" squares from fabric **A** and **J**.

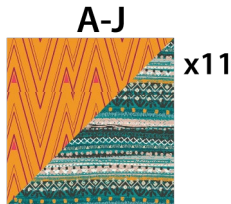


DIAGRAM 20

- Repeat the HST method with three (3) 6 7/8" squares from fabric **I** and **H**.

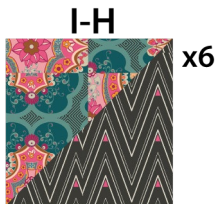


DIAGRAM 21

- Repeat the HST method with four (4) 6 7/8" squares from fabric **J** and **N**.

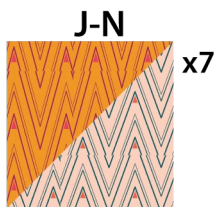


DIAGRAM 22

- Repeat the HST method with three (3) 6 7/8" squares from fabric **P** and **U**.

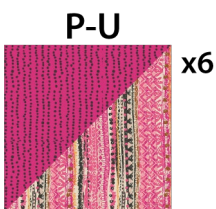


DIAGRAM 23

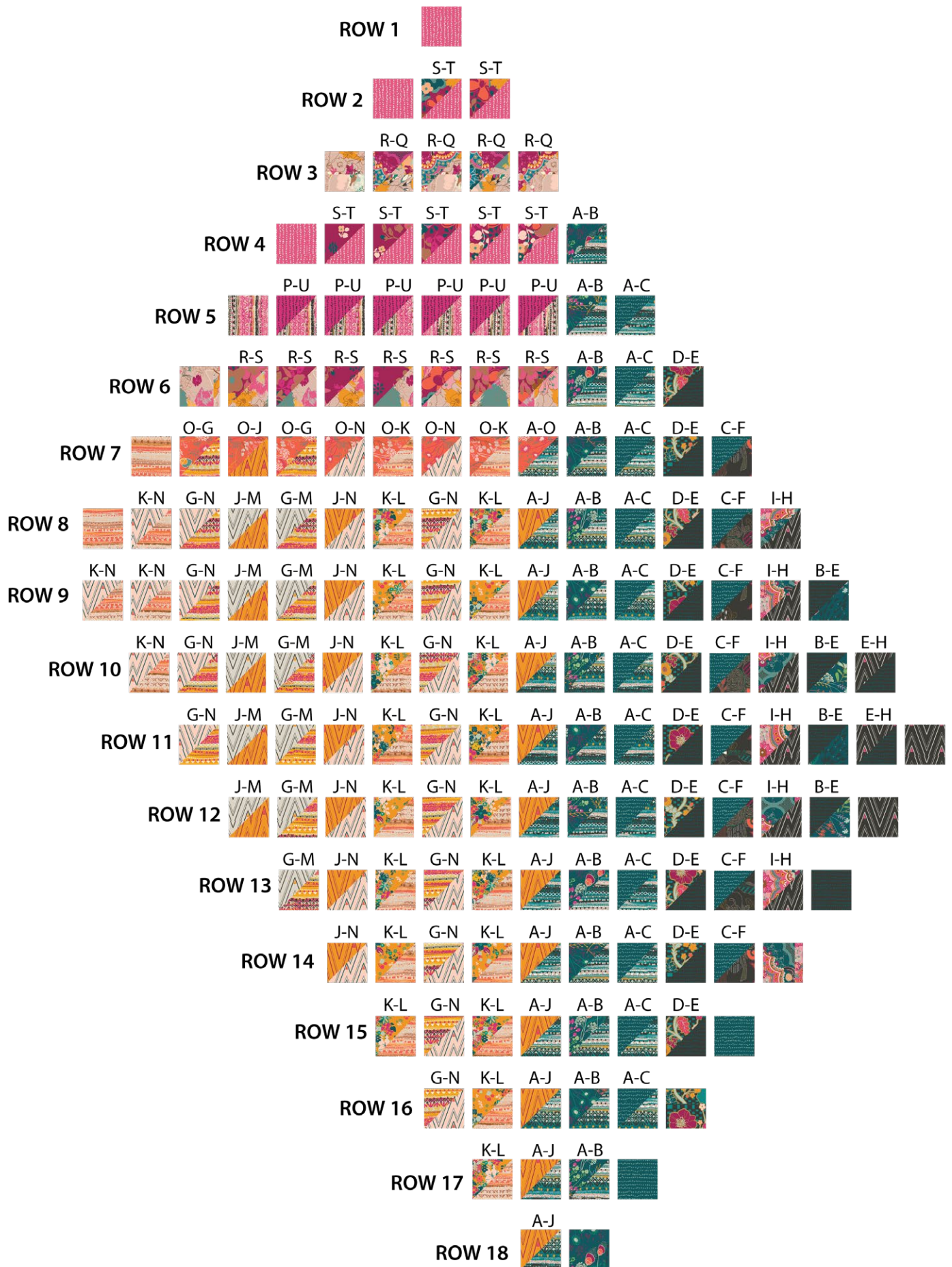


DIAGRAM 24

- Sew rows together and align each row by following the red arrows as shown on diagram 25.

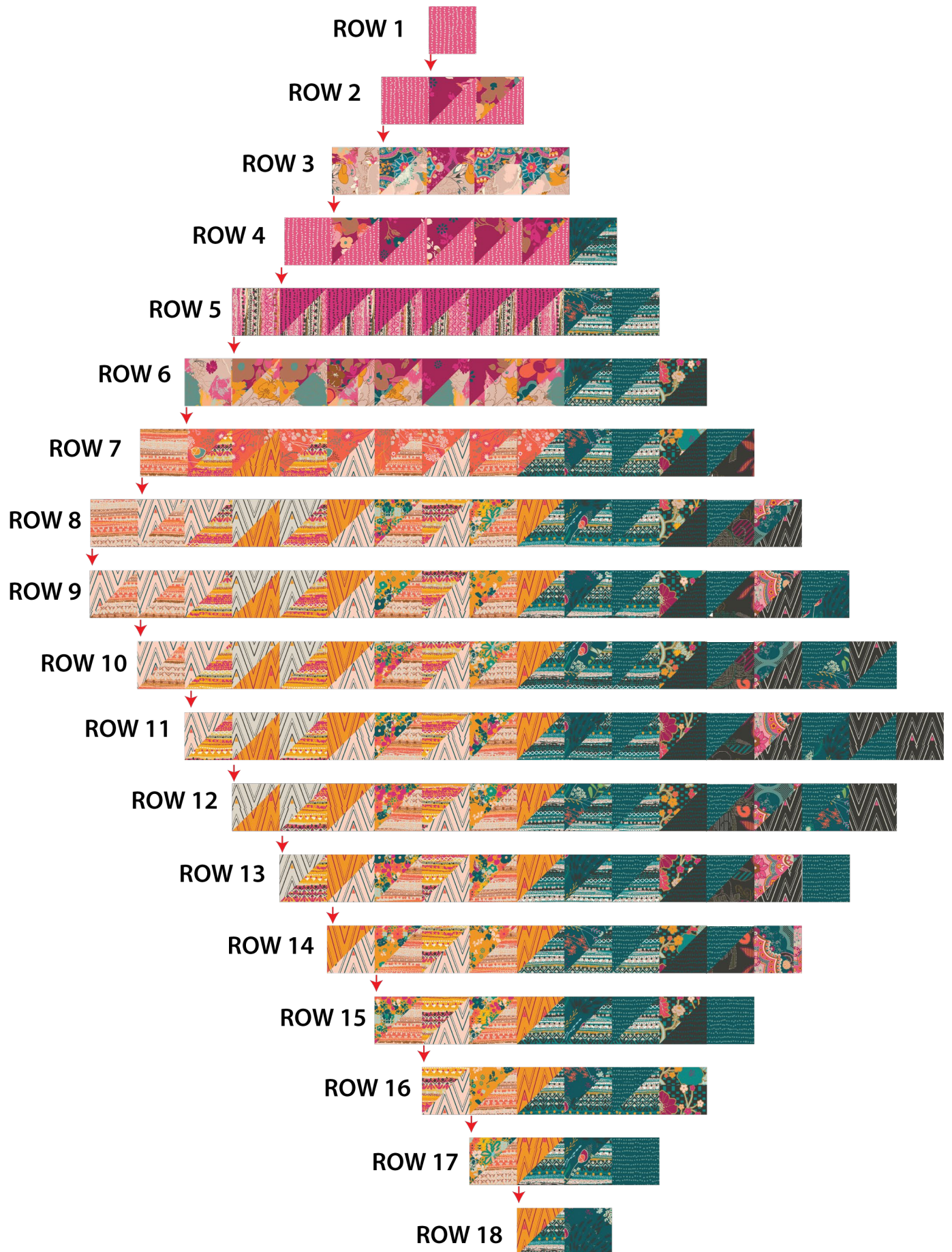


DIAGRAM 25

- Rotate the quilt top and trim to a 64½" x 83½" rectangle.



QUILT ASSEMBLY

Sew rights sides together.

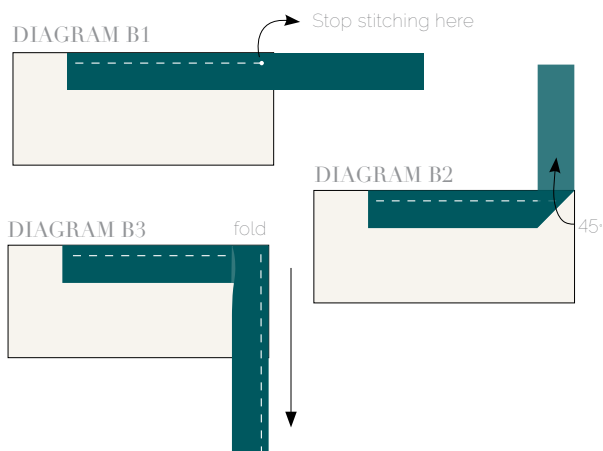
- Place BACKING FABRIC on a large surface wrong side up. Stretch it with masking tape against that surface.
- Place BATTING on top of backing fabric.
- Place TOP on top of the batting with right side facing up. Smooth away wrinkles using your hands.
- Pin all layers together and baste with basting thread, using long stitches. You can also use safety pins to join the layers.
- Machine or hand quilt starting at the center and working towards the corners. Remember that quilting motifs are a matter of personal preference. Have fun choosing yours!
- After you finished, trim excess of any fabric or batting, squaring the quilt to proceed to bind it.

BINDING

Sew rights sides together.

- Cut enough strips $1\frac{1}{2}$ " wide by the width of the fabric **C** to make a final strip 304" long. Start sewing the binding strip in the middle of one of the sides of the quilt, placing the strip right side down and leaving an approximated 5" tail. Sew with $\frac{1}{4}$ " seam allowance (using straight stitch), aligning the strip's raw edge with the quilt top's raw edge.
- Stop stitching $\frac{1}{4}$ " before the edge of the quilt (DIAGRAM B 1). Clip the threads. Remove the quilt from under the machine presser foot. Fold the strip in a motion of 45° and upward, pressing with your fingers (DIAGRAM B2). Hold this fold with your finger, bring the strip down in line with the next edge, making a horizontal fold that aligns with the top edge of the quilt (DIAGRAM B3). Start sewing at $\frac{1}{4}$ " of the border, stitching all the layers. Do the same in the four corners of the quilt.

- Stop stitching before you reach the last 5 or 6 inches. Cut the threads and remove the quilt from under the machine presser foot. Lay the loose ends of the binding flat along the quilt edge, folding the ends back on themselves where they meet. Press them together to form a crease. Using this crease as the stitching line, sew the two open ends of the binding with right sides together (you can help yourself marking with a pencil if the crease is difficult to see).
- Trim seam to $\frac{1}{4}$ " and press open. Complete the sewing. Turn binding to back of the quilt, turn raw edge inside and stitch by hand using blind stitch.



artgalleryfabrics.com

NOTE: While all possible care has been taken to ensure the accuracy of this pattern, We are not responsible for printing errors or the way in which individual work varies. Please read instructions carefully before starting the construction of this quilt. If desired, wash and iron your fabrics before starting to cut.

© 2022 Courtesy of Art Gallery Quilts LLC. All Rights Reserved.